



BASIN FAUCETS

23T _____
WRITE PURCHASE MODEL NUMBER HERE FOR FUTURE REFERENCE.

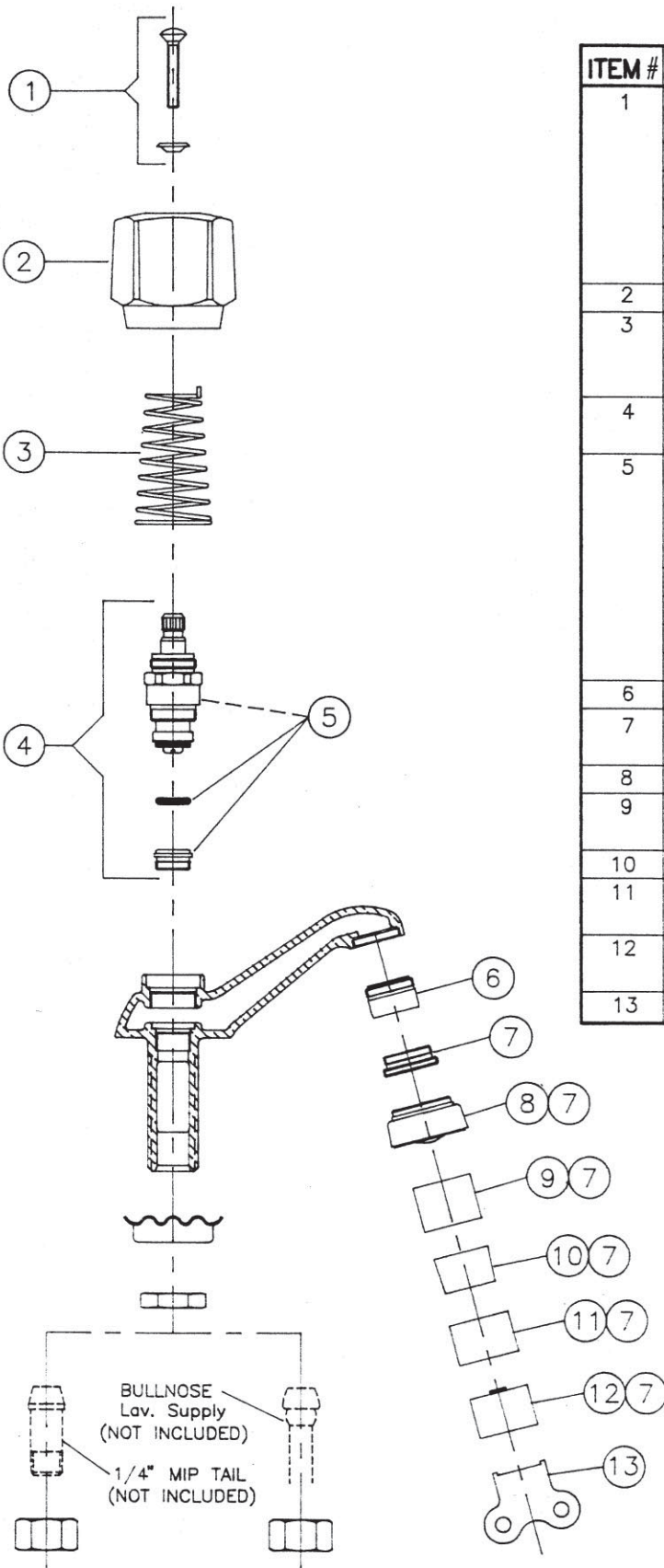
203307

203307

203307

203307

203307



ITEM #	PART #	DESCRIPTION	
1	060022A	Handle Screws & Index Kit (includes short & long handle screws, red & blue indexes	
	17483	No. 3 Scrulox 8 Screwdriver for above	
	060146A	Long Handle Screw Package For No. 1 Handle	
	060148A	Red & Blue Index Package	
	310259A	No. 3 Scrulox Drive Bit	
	310296A	No. 3 Square Drive Bit	
2	76403	5 Fluted Handle w/Screw, Red & Blue Index	
3	060033A	Springs for Self-close 5 Fluted Handle (76403 handle & 77260 structure can be ordered separately)	
4	77260	RH CP Brass Tuf-Teck Structure w/Gasket, Renewable Seat	
5	060021A	Structure Repair Kit (includes seat washers, seat washer screws, stem "O" rings, capnut "O" rings, capnut fibre gaskets, regular and long renewable seats)	
		060139A	Seat Washer Package
		060140A	Stem "O" Ring Package
		060142A	Structure "O" Ring Package
		060144A	Renewable Seat Package
6	060197A	Aerator	
7	77127	Aerator Thread Adaptor (required for outlet # 8 to #12 below)	
8	76842	VP Rose Spray (item #7 also required)	
9	060637A	VR Laminar outlet and wrench with Antimicrobial by AgION™ (item #7 also required)	
10	060641A	Flow Control Aerator (item #7 also required)	
11	060639A	VP Flow Control Aerator & 17195 Wrench (item #7 also required)	
12	77322	VP 0.5 GPM Flow Control & 17195 Wrench (item #7 also required)	
13	17195	VP Aerator Wrench	

203307

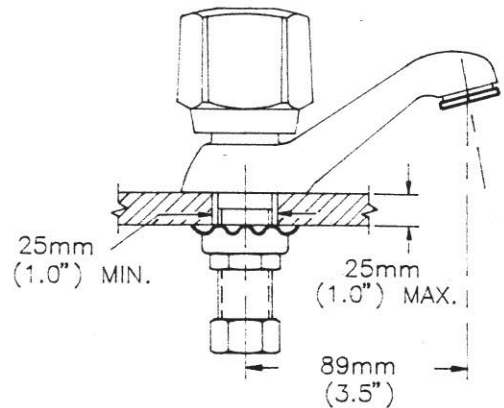
203307

203307

203307

203307

LEAVE THIS INSTRUCTION SHEET WITH THE INSTALLED FAUCET !



BEFORE INSTALLING THE SPOUT OUTLET

Turn hot and cold supply handles to the full open position. Flush out the lines for at least one minute to clean out any construction debris (particles of solder, copper chips, pipe dope, teflon tape, etc.). After flushing, shut-off water at faucet and assemble spout outlet to the faucet spout.

MAINTENANCE

When performing routine maintenance, do not void your warranty by installing non-genuine parts. Use only authorized Delta parts. After any maintenance, remove the spout outlet, turn handle(s) to the full open position, and flush lines for one minute. This will remove debris from lines which can damage internal parts of faucet and create leaks. After flushing, shut off water at faucet and reassemble spout outlet.

CARE INSTRUCTIONS

This Delta faucet is designed and engineered in accordance with the highest quality and performance standards. With proper care, it will give you years of trouble free service. Care should be given to the cleaning of this product. Although its finish is extremely durable, it can be **DAMAGED** by **ACIDIC CLEANERS** (i.e. cleaners designed specifically for vitreous lavatories and water closets), **HARSH ABRASIVES** or **POLISH**. To clean, simply wipe with a damp cloth and blot dry with a soft cloth.

SELF-CLOSE SPRING ASSEMBLY INSTRUCTIONS

Insert inside spring tab (located at large bottom end diameter of spring) into hole at the side of the Tuf-Teck structure capnut. Place handle over and down the spring until the upright top spring tab engages handle (handle must only touch top of stem, but **NOT** engage stem splines). Rotate handle and spring 1/2 to 3/4 of a turn to the open position, and then push handle down to engage stem splines. Assemble handle screw and coloured handle index ring.

Delta Commercial Faucet Limited Warranty

All parts of the Delta® HDF® and TECK® faucets are warranted to the original consumer purchaser to be free from defects in material, finish and workmanship for a period of five (5) years unless otherwise specifically stated in the catalogue and price book. This warranty is made to the original consumer purchaser and shall be effective from date of purchase as shown on purchaser's receipt.

Delta will, at its option, repair or replace, **FREE OF CHARGE**, during the warranty period, any part which proves defective in material or workmanship under normal installation, use and water and service conditions. If Delta Faucet concludes that the returned part was manufactured by Delta Faucet and is, in fact, defective, then Delta Faucet will honour the warranty stated herein. Replacement parts can be obtained from your local dealer or distributor listed in the telephone directory or by returning the part along with the purchaser's receipt to our factory, **TRANSPORTATION CHARGES PREPAID**, at the address listed. **THIS WARRANTY IS THE ONLY EXPRESS WARRANTY MADE BY DELTA. ANY CLAIMS MADE UNDER THIS WARRANTY MUST BE MADE DURING THE FIVE YEAR PERIOD REFERRED TO ABOVE. ANY IMPLIED WARRANTIES, INCLUDING THE IMPLIED WARRANTY OF MERCHANTABILITY OF FITNESS FOR A PARTICULAR PURPOSE, ARE LIMITED IN DURATION TO THE DURATION OF THIS WARRANTY. LABOUR CHARGES AND/OR DAMAGE INCURRED IN INSTALLATION, REPAIR OR REPLACEMENT AS WELL AS INCIDENTAL AND CONSEQUENTIAL, SPECIAL, INDIRECT OR PUNITIVE DAMAGES CONNECTED THEREWITH ARE EXCLUDED AND WILL NOT BE PAID BY DELTA FAUCET.**

Some states do not allow limitations on how long an implied warranty lasts, or the exclusion or limitation of incidental or consequential damages, so the above limitations or exclusions may not apply to you. This warranty gives you specific legal rights, and you may also have other rights which vary from state to state.

This warranty is for commercial products only from Delta Faucet Company and Delta Faucet Canada (a division of Masco Canada Limited) and is void for any damage to this faucet due to misuse, abuse, neglect, accident, improper installation, any use in violation of instructions furnished by Delta Faucet or any use of replacement parts other than genuine Delta parts.

Delta Faucet Canada, a division of Masco Canada Limited
350 South Edgeware Road, St. Thomas, Ontario, N5P 4L1
1-800-567-3300 (English) 1-800-265-9245 (French)

Delta Faucet Company
Box 40980, 55 East 111th St., Indianapolis, IN, U.S.A. 46280
(317) 848-1812

For further technical assistance, call Delta Commercial Technical Service at 1-800-387-8277.