

**SAVONA WHIRLPOOL**

**2901.028W Whirlpool featuring System II**

- Acrylic with fiberglass reinforcement
- Pre-leveled tub bottom
- Two person design with center drain and dual lumbar ends
- Dual, molded-in arm rests
- Faucet deck/accessory area
- 2.0 HP two speed, self-draining pump/motor with pulse feature
- Factory installed power cord with plug
- Ten multi-directional and flow-adjustable jets including:
  - Two Ideal-flow jets
  - Six body massage jets
  - Two recessed back-rest jets
- Deck-mounted, electronic control with 20 minute built-in timed safety shut off and Chrome bezel
- Three silent air volume controls
- Quick Connect Safe-T-Heater connection system
- Factory installed and tested whirlpool system

**2901.028WGD Whirlpool Massage featuring System II with Grab Bar Drilling**

- Same as 2901.028W except with grab bar drilling (grab bar must be ordered separately)

**2901.028WC StayClean™ Whirlpool Massage featuring System II**

- Same as 2901.028W except with the StayClean™ whirlpool system featuring Antimicrobial AlphaSan®

**2901.028WCGD StayClean™ Whirlpool Massage featuring System II**

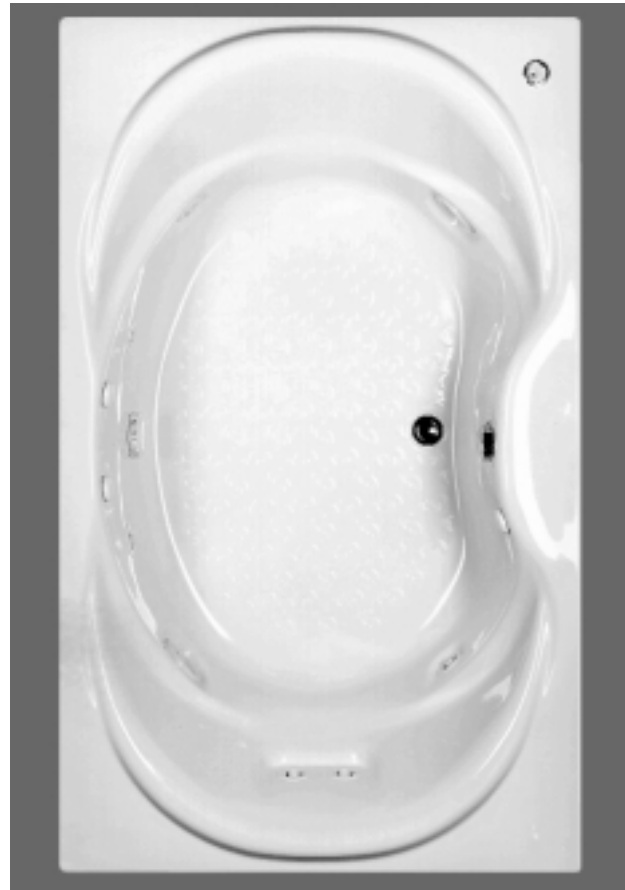
- Same as 2901.028W except with the StayClean™ whirlpool system featuring Antimicrobial AlphaSan® and grab bar drilling (grab bar must be ordered separately)

Nominal Dimensions: 1810 x 1105 x 559mm  
(71-1/4" x 43-1/2" x 22")

**Compliance Certifications -**

**Meets or Exceeds the Following Specifications:**

- Underwriters Laboratories - Hydromassage Bathtubs UL 1795
- ASME A112.19.7M for Whirlpool Appliances
- ANSI Z124.1 for Plastic Bathtubs
- ASTM E162 for Flammability
- NFPA 258 for Smoke Density



**To Be Specified - Required:**

- Color: (specify color)
- Bath Faucet (specify finish)
- Rotary Drain: 1583.470 (specify finish)

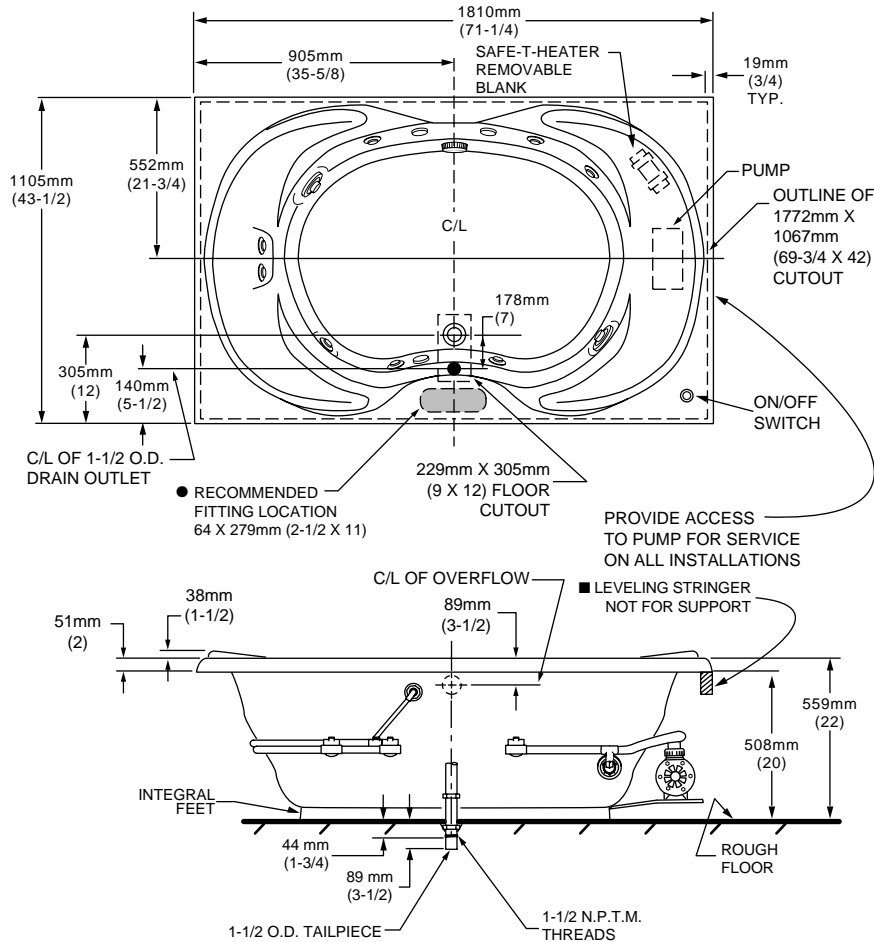
**To Be Specified - Optional:**

- Safe-T-Heater\*: 9075.120
- Grab Bar Kit: 9836.017 (specify finish)
- System II Control Bezel: 9861.100 (specify finish)

For color/finish availability and other faucet choices, please see the Product Selector and Pricing Guide.

\* **NOTE:** the Safe-T-Heater is designed to maintain water temperature during operation. It will not heat cold water to desired bathing temperature.

**NOTE:** Roughing-in dimensions and product specifications shown on reverse side of page.



GENERAL SPECIFICATIONS FOR 2901 WHIRLPOOL	
INSTALLED SIZE	71-1/4 x 43-1/2 x 22 In. (1810 x 1105 x 559mm)
WEIGHT	152 Lbs. (68 Kg.)
WEIGHT w/WATER	936 Lbs. (421 Kg.)
GAL. TO OVERFLOW	94 Gal. (356 L)
WHIRLPOOL MIN. OPERATING VOL.	86 Gal. (326 L)
BATHING WELL AT SUMP	44 x 28 In. (1118 x 711mm)
BATHING WELL AT RIM	67-1/2 x 33 In. (1715 x 838mm)
WATER DEPTH TO OVERFLOW	16-1/4 In. (413mm)
FLOOR LOADING (PROJECTED AREA)	43 Lbs./Sq.Ft. (211 Kgs./Sq.m)
PTS.	27.8
CUBE (FT <sup>3</sup> )	61.5
WHIRLPOOL ELECTRICAL SPECIFICATIONS	
SYSTEM II PUMP	2.1 HP, 15.6 AMPS, 120V.

**NOTES:**

BATH CAN BE INSTALLED EITHER ABOVE OR BELOW FLOOR LINE AS PIER, ISLAND OR PENINSULA TYPE INSTALLATION. SUMP OF BATH IS SUPPORTED BY INTEGRAL FEET. NO ADDITIONAL SUPPORT REQUIRED. ENCLOSING MATERIALS BY OTHERS.

- IF INSTALLING A DECK-MOUNTED FITTING, BEFORE DRILLING ANY HOLES: CHECK FOR INTERFERENCE WITH CIRCULATING SYSTEM PIPING AND DRAIN OVERFLOW. MOUNTING HOLES DRILLED BY INSTALLER.

OPTIONAL TILING BEAD KIT AVAILABLE.

- REFER TO INSTALLATION INSTRUCTIONS SUPPLIED WITH WHIRLPOOL FOR ADDITIONAL INFORMATION. FITTINGS NOT INCLUDED AND MUST BE ORDERED SEPARATELY.

PROVIDE SUITABLE REINFORCEMENT FOR ALL SUPPORTS.

**ON SYSTEM II:** CONTROL MODULE TO BE MOUNTED BEHIND ACCESS PANEL, A MINIMUM OF (152mm) 6 ABOVE ROUGH FLOOR.

**IMPORTANT:** Dimensions of fixtures are nominal and may vary within the range of tolerances established by ANSI Standard Z124.1 / CSA Certified. These measurements are subject to change or cancellation. No responsibility is assumed for use of superseded or voided leaflet.