

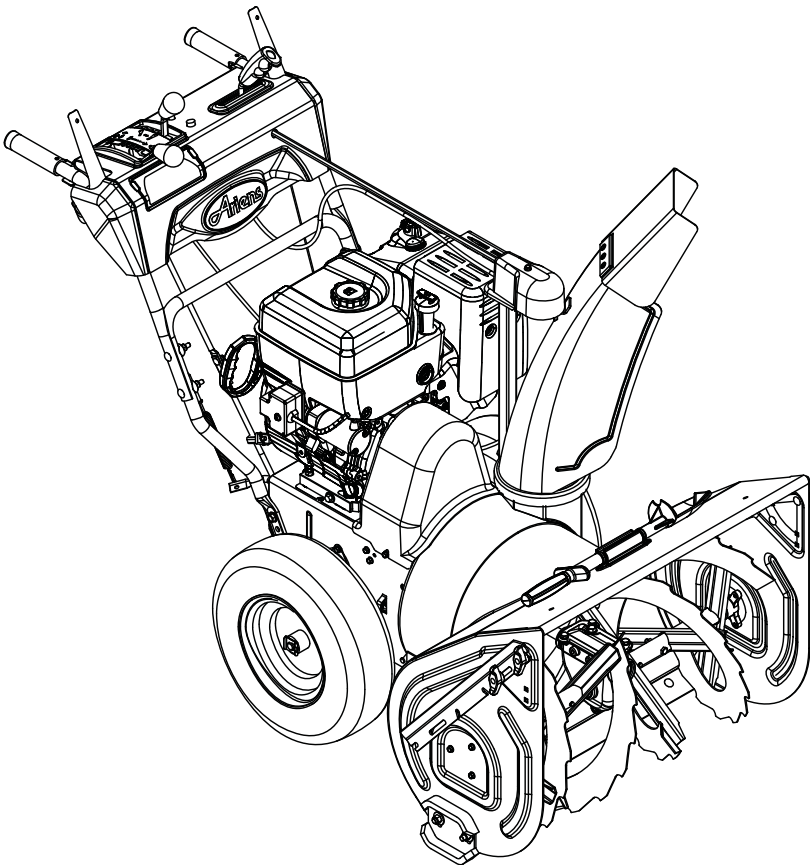


THE KING OF SNOW®

Sno-Thro®

926 Hydro Pro Series

Parts Manual



Models

- 926053 – Hydro Pro 28
(SN 095000+)
- 926054 – Hydro Pro 32
(SN 095000+)
- 926055 – Hydro Pro 36
(SN 095000+)
- 926056 – Hydro Pro 28 Track
(SN 095000+)
- 926325 – Hydro Pro 28 Track CE
(SN 000101+)
- 926326 – Hydro Pro 28 CE
(SN 095000+)
- 926328 – Hydro Pro 32 CE
(SN 095000+)
- 926329 – Hydro Pro 36 CE
(SN 000101+)
- 926514 – Hydro Pro 32 Track 12V
(SN 000101+)



The use of any gasoline exceeding 10% ethanol (E10) or 10% MTBE will void the product warranty.
L'utilisation d'une essence contenant plus de 10% d'éthanol (E10) ou de 10% de MTBE annule la garantie.
El uso de cualquier otro tipo de gasolina con un porcentaje superior al 10% de etanol (E10) o al 10% de MTBE invalidará la garantía del producto.

THE MANUAL

Before you operate your unit, carefully and completely read manuals supplied with the unit. The contents will provide you with an understanding of safety instructions and controls during normal operation and maintenance.

For your safety and the safety of others always read, understand, and follow all DANGER, WARNING, and CAUTION messages found in manuals and on safety decals.

Hardware descriptions are given in decimals.

Decimals to Fractions			
.063	1/16	.563	9/16
.125	1/8	.625	5/8
.188	3/16	.688	11/16
.250	1/4	.750	3/4
.313	5/16	.813	13/16
.375	3/8	.875	7/8
.438	7/16	.938	15/16
.500	1/2	1.00	1

SERVICE AND REPLACEMENT PARTS

When ordering replacement parts or making service inquiries, know the Model and Serial numbers of your unit and engine.

Numbers are located on the product registration card in the unit literature package. They are printed on a serial number label, located on the frame of your unit.

• Record Unit Model and Serial numbers here:

• Record Engine Model and Serial numbers here:

UNAUTHORIZED REPLACEMENT PARTS

Use only Ariens replacement parts. The replacement of any part on this vehicle with anything other than an Ariens authorized replacement part may adversely affect the performance, durability, or safety of this unit and may void the warranty. Ariens disclaims liability for any claims or damages, whether warranty, property damage, personal injury or death arising out of the use of unauthorized replacement parts.

PRODUCT REGISTRATION

The Ariens dealer must register the product at the time of purchase. Registering the product will help the company process warranty claims or contact you with the latest service information. All claims meeting requirements during the limited warranty period will be honored, whether or not the product registration card is returned. Keep a proof of purchase if you do not register your unit.

Customer Note: If Dealer does not register your product, please fill out, sign and return the product registration card to Ariens or go to www.ariens.com.

YOUR SATISFACTION IS IMPORTANT

Questions? Please follow these helpful steps:

1. Refer to the manuals supplied with your unit.
They will guide you through safe and proper operation and maintenance.
They contain specifications on your unit.
If your questions are not answered in these manuals, go to step number two.
2. Contact Your Dealer.
Our dealers will be happy to supply any service or advice required to keep your unit operating at peak efficiency.

A factory trained staff is available to support your equipment needs. They stock genuine Ariens parts and lubricants manufactured with the same precision and skill as the original.

If your questions are not resolved by the support staff, ask for the manager or owner.

When contacting your Dealer supply your model and serial numbers.

TO SPEED PARTS ORDERING:

1. Know the model and serial numbers of your unit.
2. Know the part number required.
3. Know the quantity required.
4. Know the part description.

MODELS

Domestic

Model 926053 (Hydro Pro 28)

28" Sno-Thro, 120V Electric Start
Serial No. 095000 and up

Model 926054 (Hydro Pro 32)

32" Sno-Thro, 120V Electric Start
Serial No. 095000 and up

Model 926055 (Hydro Pro 36)

36" Sno-Thro, 120V Electric Start
Serial No. 095000 and up

Model 926056 (Hydro Pro 28 Track)

28" Sno-Thro, 120V Electric Start
Serial No. 095000 and up

CE

Model 926326 (Hydro Pro 28)

28" Sno-Thro, 240V Electric Start
Serial No. 095000 and up

Model 926328 (Hydro Pro 32)

32" Sno-Thro, 240V Electric Start
Serial No. 095000 and up

Model 926329 (Hydro Pro 36)

36" Sno-Thro, 240V Electric Start
Serial No. 000101 and up

Model 926325 (Hydro Pro 28 Track)

28" Sno-Thro, 240V Electric Start
Serial No. 000101 and up

Global

Model 926514 (Hydro Pro 32 Track)

32" Sno-Thro, 12V Electric Start
Serial No. 000101 and up

TABLE OF CONTENTS

DECALS

Decals	4
--------------	---

ENGINE AND DRIVE

Engine and Belt Drive	6
-----------------------------	---

MAIN FRAME

Frame	8
Wheels and Axles	9
Track and Axles	10
Reduction Drive	12
Transmission	14

OPERATORS CONTROLS

Handlebars, Lever Controls, Panel and Dash	16
Handlebars, Cables and Controls	18

BLOWER

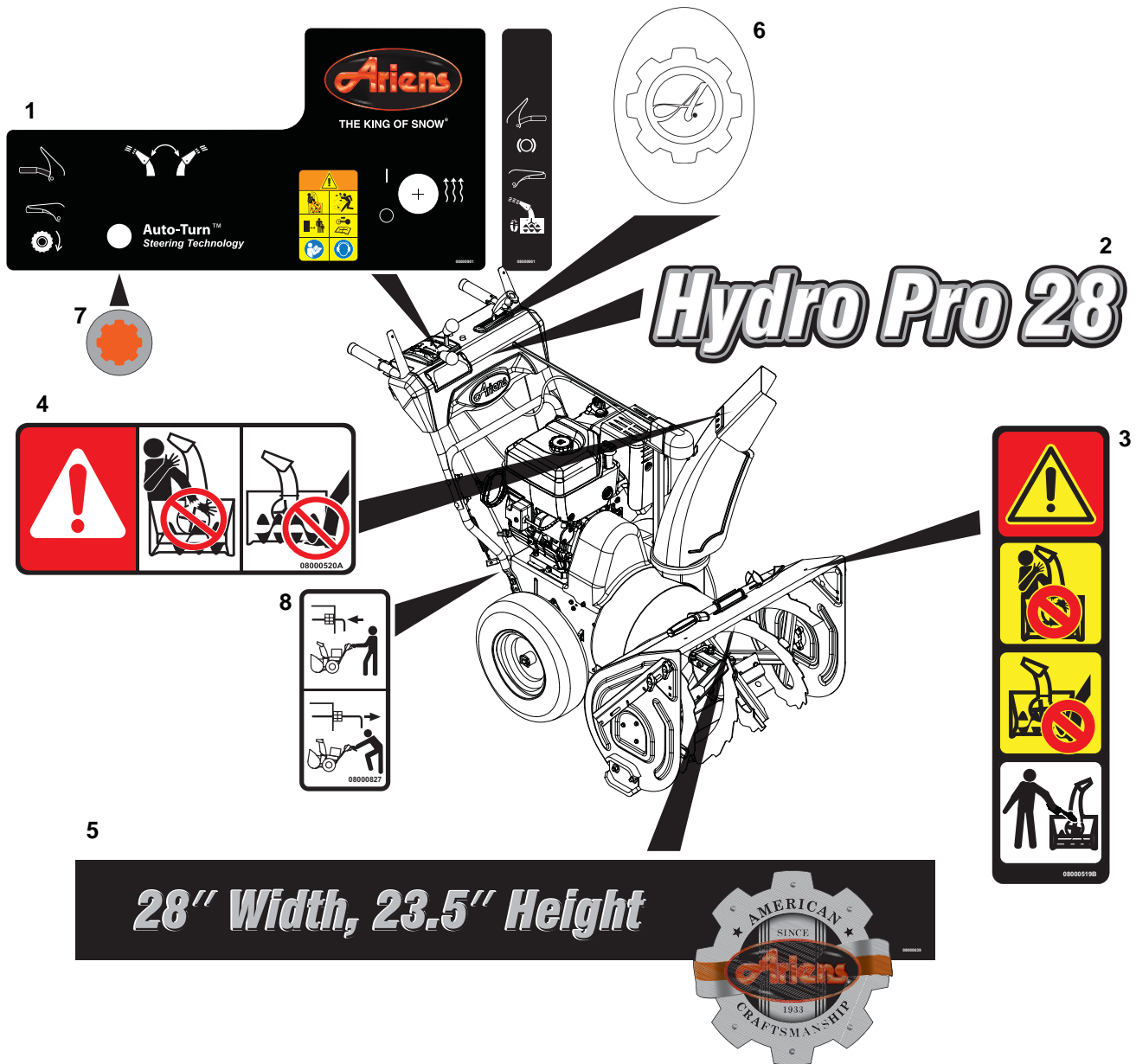
Chute, Auger and Battery	20
Gear Case – Cast Iron	22
Discharge Chute	24

ELECTRICAL SYSTEMS

Electrical	26
Continuity and Wiring Diagrams	28

DECALS

Model 926053, 054, 055, 056, 325, 326, 328, 329, 514

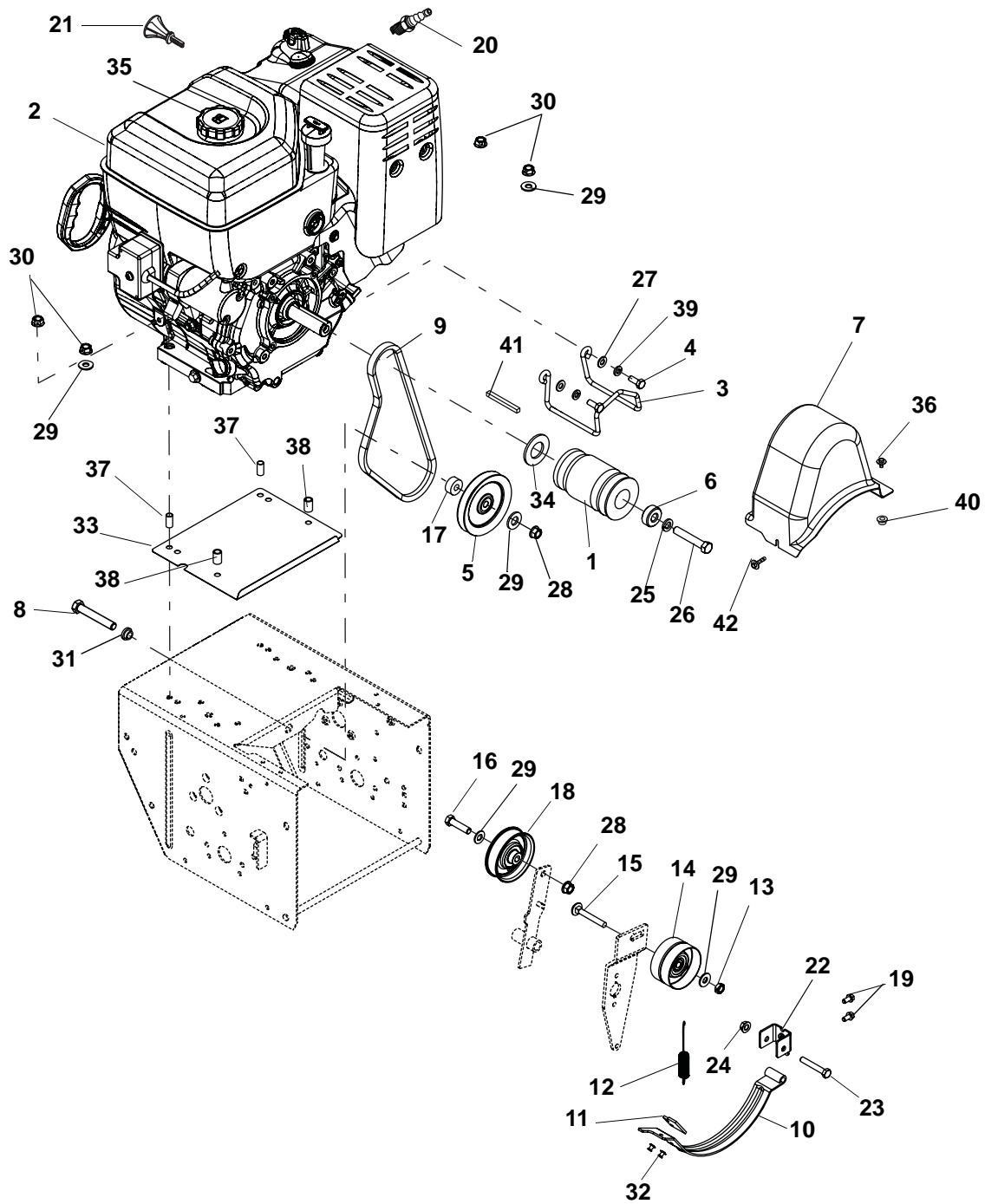


Item	Part No.	Qty.	Description
1	08000901	1	Decal, Control (926053, 054, 055, 326, 328, 329)
	08000839	1	Decal, Control – Track (926056, 325)
	08000838	1	Decal, Control – Track (926514)
2	08000819	1	Decal, Hydro Pro 28 (926053, 056, 326, 325)
	08000820	1	Decal, Hydro Pro 32 (926054, 328, 514)
	08000821	1	Decal, Hydro Pro 36 (926055, 329)
3	08000519	1	Decal, Danger, Rotating Parts
4	08000520	1	Decal, Danger
5	08000639	1	Decal, Housing, Pro 28 (926053, 056, 326, 325)
	08000638	1	Decal, Housing, Pro 32 (926054, 328, 514)
	08000637	1	Decal, Housing, Pro 36 (926055, 329)
6	08000630	1	Decal, Ariens Gear
7	08000836	1	Decal, Auto Differential
8	08000827	1	Decal, Bypass

NOTES

ENGINE AND BELT DRIVE

Model 926053, 054, 055, 056, 325, 326, 328, 329, 514



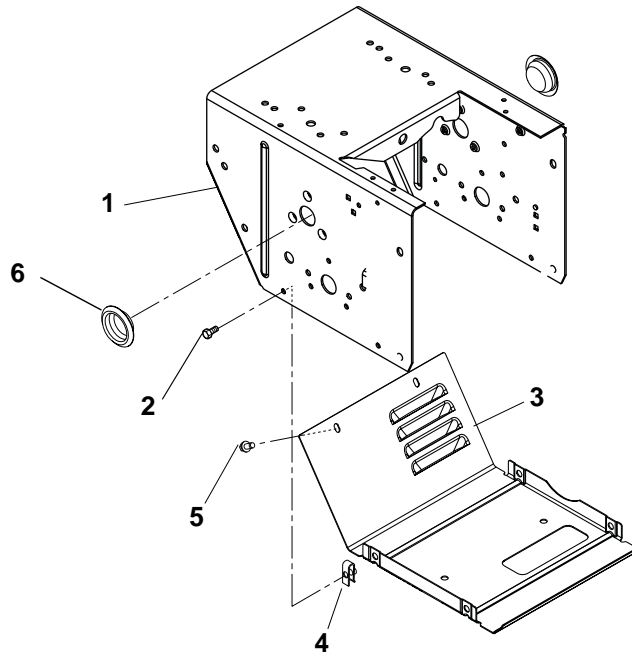
ENGINE AND BELT DRIVE

Model 926053, 054, 055, 056, 325, 326, 328, 329, 514

Item	Part No.	Qty.	Description
1	04425000	1	Sheave, Engine (926053, 054, 055, 326, 328, 329)
	04510800	1	Sheave, Engine (926056, 325, 514)
2	08200705	1	Engine, Briggs & Stratton, Polar Force 2100 Series 120V (926053, 054, 055, 056)
	08200801	1	Engine, Briggs & Stratton, Polar Force 2100 Series 240V (926326, 328, 329, 325)
	08200917	1	Engine, Briggs & Stratton, Polar Force 2100 Series 12V (926514)
3	04509700	1	Belt Finger (926056, 325, 514)
	04334200	1	Belt Finger (926053, 054, 055, 326, 328, 329)
4	05947300	2	Bolt, Hex .31-24 x .75 Grade 5
5	07300528	1	V-Idler
6	05500938	1	Bushing, Spacer .47 x 1.25 x .50
7	04083100	1	Belt Cover
8	05963300	1	Bolt, Hex .38-16 x 2.00 Grade 5
9	07200631	1	V-Belt, Drive (926053, 054, 055, 326, 328, 329)
	07200630	1	V-Belt, Drive (926056, 325, 514)
10	00374900	1	Arm, Brake
11	00180500	1	Brake Pad
12	08300017	1	Spring
13	06537200	1	Nut, Locking Center Jam .38-16
14	07333500	1	Idler, Flat
15	06200111	1	Bolt, Round Head Square Short Neck .38-16 x 1.75 Grade 5
16	05957900	1	Bolt, Hex .375-16 x 1.5 Grade 5
17	05501123	1	Bushing, Pocket .391 x .570 x 1.0 x .450
18	07340000	1	Idler
19	07400034	2	Screw, Tapping Hex Washer Head Thread Rolling .25-20 x .50
20	21531100	1	Spark Plug
21	07500130	1	Key, Rotary Briggs & Stratton
22	00430751	1	Pivot, Brake
23	05957200	1	Bolt, Hex .31-18 x 2.00 Grade 5
24	06543100	1	Nut, Locking Top Flange .31-18
25	06309300	1	Washer, Locking .44 x .109
26	05964600	1	Bolt, Hex .44-20 x 2.50 Grade 5
27	06437200	2	Washer, Flat Steel .344 x .688 x .065
28	06542000	2	Nut, Locking Top Flange .38-16
29	06435700	5	Washer, Flat Steel .38 x .875 x .083
30	06528700	4	Nut, Locking Center Flange .31-18
31	05501122	1	Bushing, Flange .391 x .56 x .313 x .75
32	06800028	2	Rivet, Pop .187
33	04346051	1	Baffle
34	06443000	1	Washer, Flat Steel 1.062 x 2.0 x .134
35	07500217	1	Fuel Cap
36	07400104	1	Screw, Tapping, Large Hex Washer Head Thread Rolling .25-20 x .50
37	05500937	2	Bushing, Sleeve
38	05531500	2	Bushing, Sleeve
39	06307400	2	Washer, Locking .312 x .097
40	07027600	1	Nut, Push .25 x .50
41	06610300	1	Key, Square .25 x .25 x 2.25
42	07400108	1	Screw, Tapping, Captive .25-20 x .50

FRAME

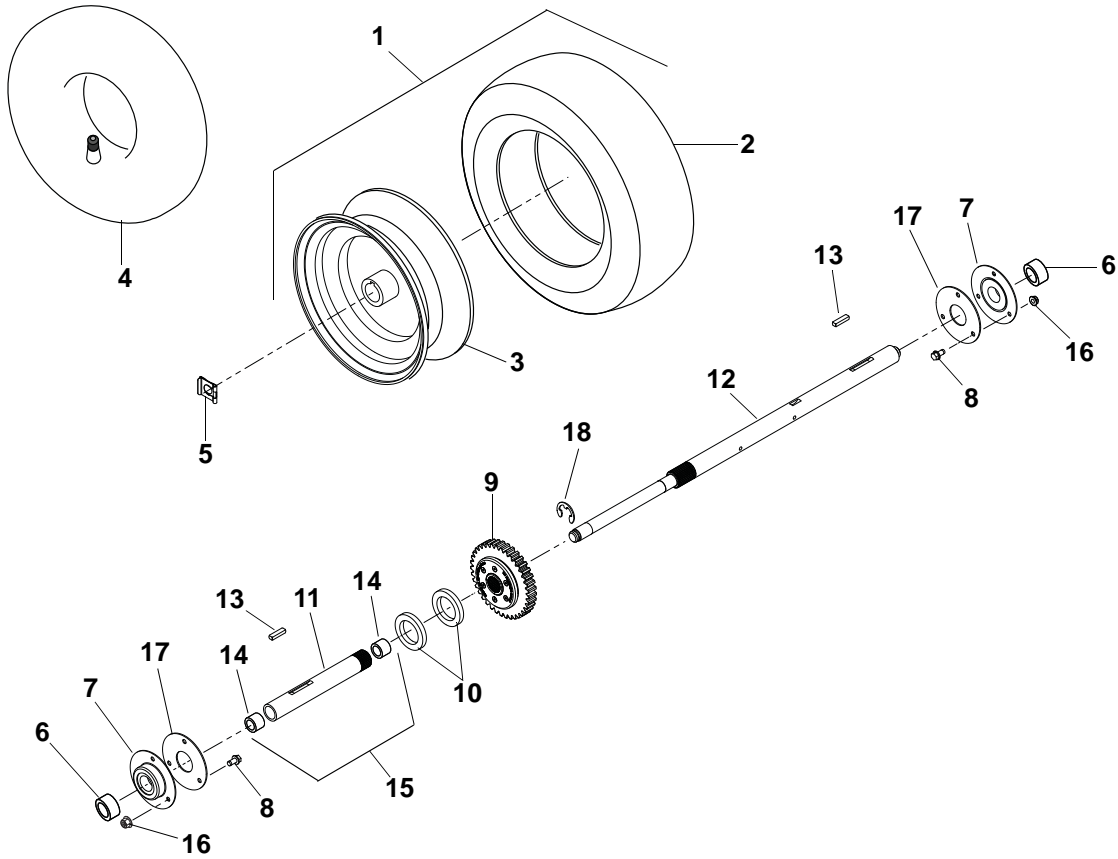
Model 926053, 054, 055, 056, 325, 326, 328, 329, 514



Item	Part No.	Qty.	Description
1	04426159	1	Main Frame
2	05900019	4	Bolt, Hex Washer Head .25-20 x .75 Grade 5
3	04516659	1	Bottom Cover
4	07009000	4	Nut, Retainer .25-20 x .56
5	07400034	2	Screw, Tapping Hex Washer Head Thread Rolling .25-20 x .50
6	07500231	2	Button Plug

WHEELS AND AXLES

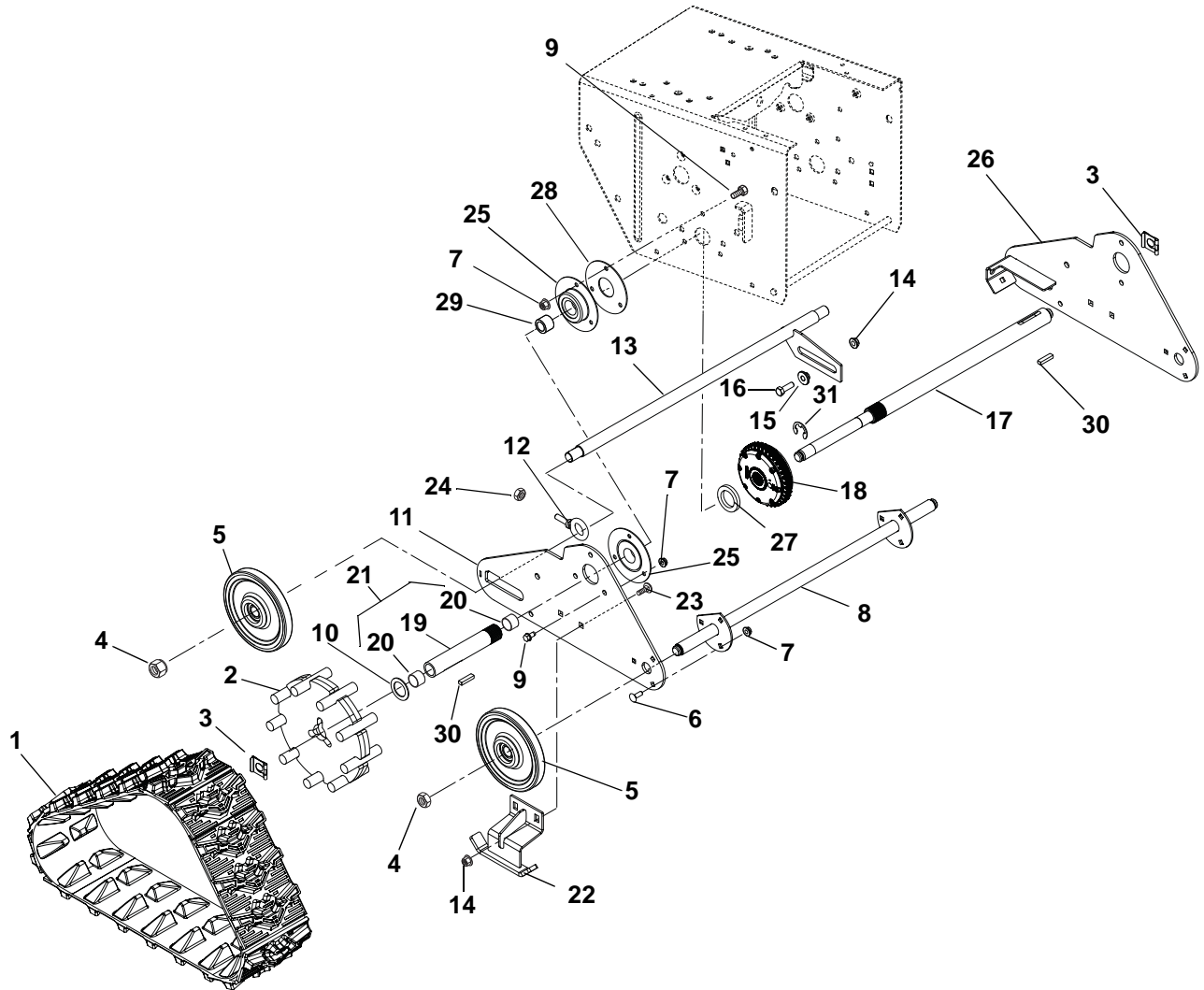
Model 926053, 054, 055, 326, 328, 329



Item	Part No.	Qty.	Description
1	07100231	1	Tire/Wheel Assembly, Right Hand 16 x 6.50-8 (Includes Items 2 and 3)
	07100232	1	Tire/Wheel Assembly, Left Hand 16 x 6.50-8 (Includes Items 2 and 3)
2	07100728	2	Tire, 16 x 6.50-8 K478
3	07100103	2	Wheel/Hub, 16 x 6.50-8
4	07108700	2	Tube 16 x 6.50-8
5	05700001	2	Clip, Snap
6	05501014	2	Spacer
7	05400706	2	Bearing
8	05946800	6	Bolt, Hex .25-20 x .75
9	04584100	1	Differential Assembly
10	06443000	2	Washer, Flat Steel 1.062 x 2.0 x .134
11	00660800	1	Axle, Short (Included in Item 15)
12	00660900	1	Axle, Long
13	06600002	2	Key, Rectangular .25 x .188 x 1.00
14	05500023	2	Bushing, Sleeve (Included in Item 15)
15	52604100	AR	Axle, Short with Bushings (Includes Items 11 and 14)
16	06500710	6	Nut, Locking Center Flange .25-20
17	03389051	2	Plate, Bearing Spacer
18	05708300	1	Ring, Retaining External .625 x .042

TRACK AND AXLES

Model 926056, 325, 514



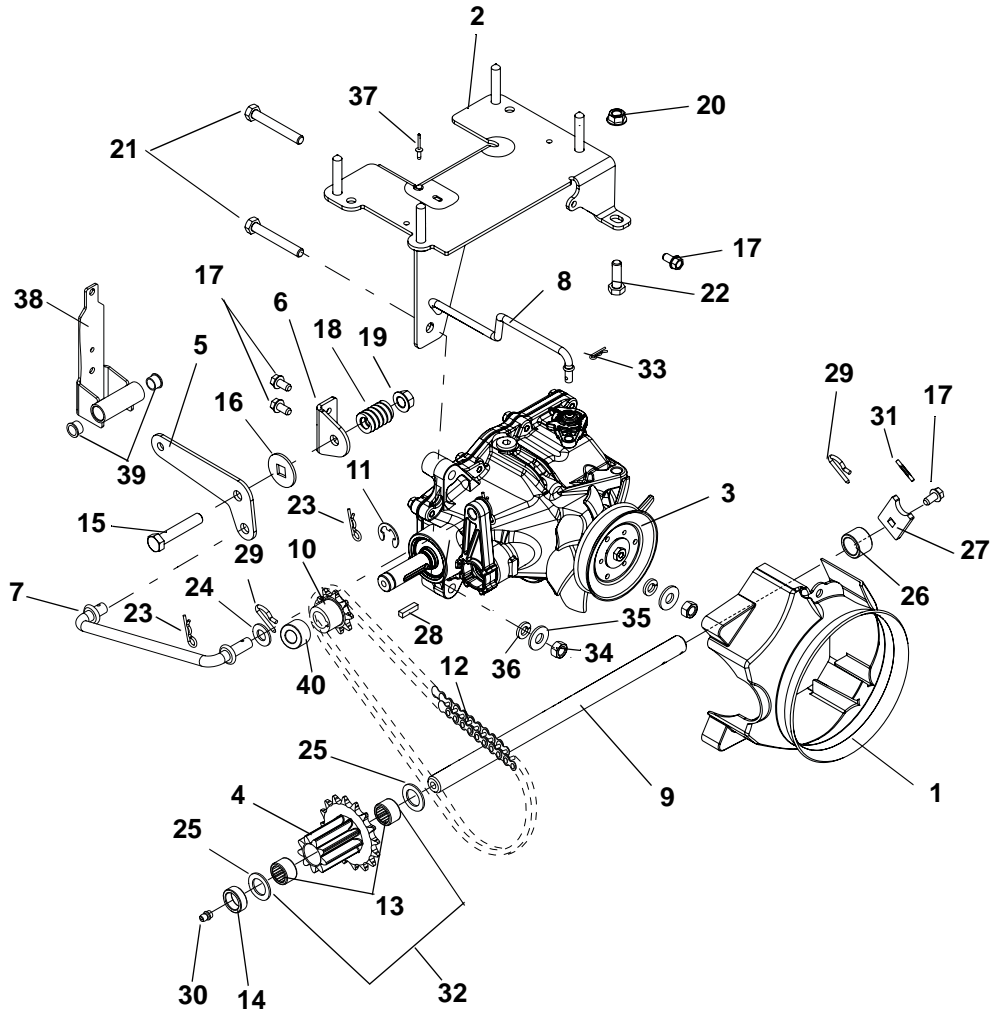
TRACK AND AXLES

Model 926056, 325, 514

Item	Part No.	Qty.	Description
1	00669700	2	Track, Rubber
2	04520000	2	Wheel, Drive
3	05700001	2	Clip, Snap
4	06530300	4	Nut, Locking Nylon .625-18
5	03293600	4	Wheel, Bogie
6	06219900	6	Bolt, Round Head Square Neck .25-20 x .75 Grade 5
7	06500710	18	Nut, Locking Center Flange .25-20
8	03376000	1	Axle, Front
9	05946800	12	Bolt, Hex .25-20 x .75 Grade 5
10	06436300	2	Washer, Flat Steel 1.010 x 1.505 x .062
11	00669851	1	Side Plate, Right Hand
12	07000040	2	Bolt, Eye
13	03376100	1	Axle, Rear
14	06543100	5	Nut, Locking Top Flange .31-18
15	05501127	1	Flange Bushing
16	05946900	1	Bolt, Hex .31-18 x 1.00 Grade 5
17	04593100	1	Axle, Long
18	04584100	1	Differential Assembly
19	00661300	1	Axle, Short (Included in Item 21)
20	05500023	2	Bushing, Sleeve (Included in Item 21)
21	52604200	1	Axle, Short With Bushings (Includes Items 19 and 20)
22	00660751	2	Runner, Guide
23	06215700	4	Bolt, Round Head Square Neck .31-18 x .75 Grade 5
24	06534800	2	Nut, Locking Center Flange .38-16
25	05400706	4	Bearing
26	00669951	1	Side Plate, Left Hand
27	06443000	1	Washer, Flat Steel 1.062 x 2.0 x .134
28	03389051	2	Plate, Bearing Spacer
29	05500122	2	Bushing, Sleeve
30	06600002	2	Key, Rectangular .25 x .188 x 1.00
31	05708300	1	Ring, Retaining External .625 x .042

REDUCTION DRIVE

Model 926053, 054, 055, 056, 325, 326, 328, 329, 514



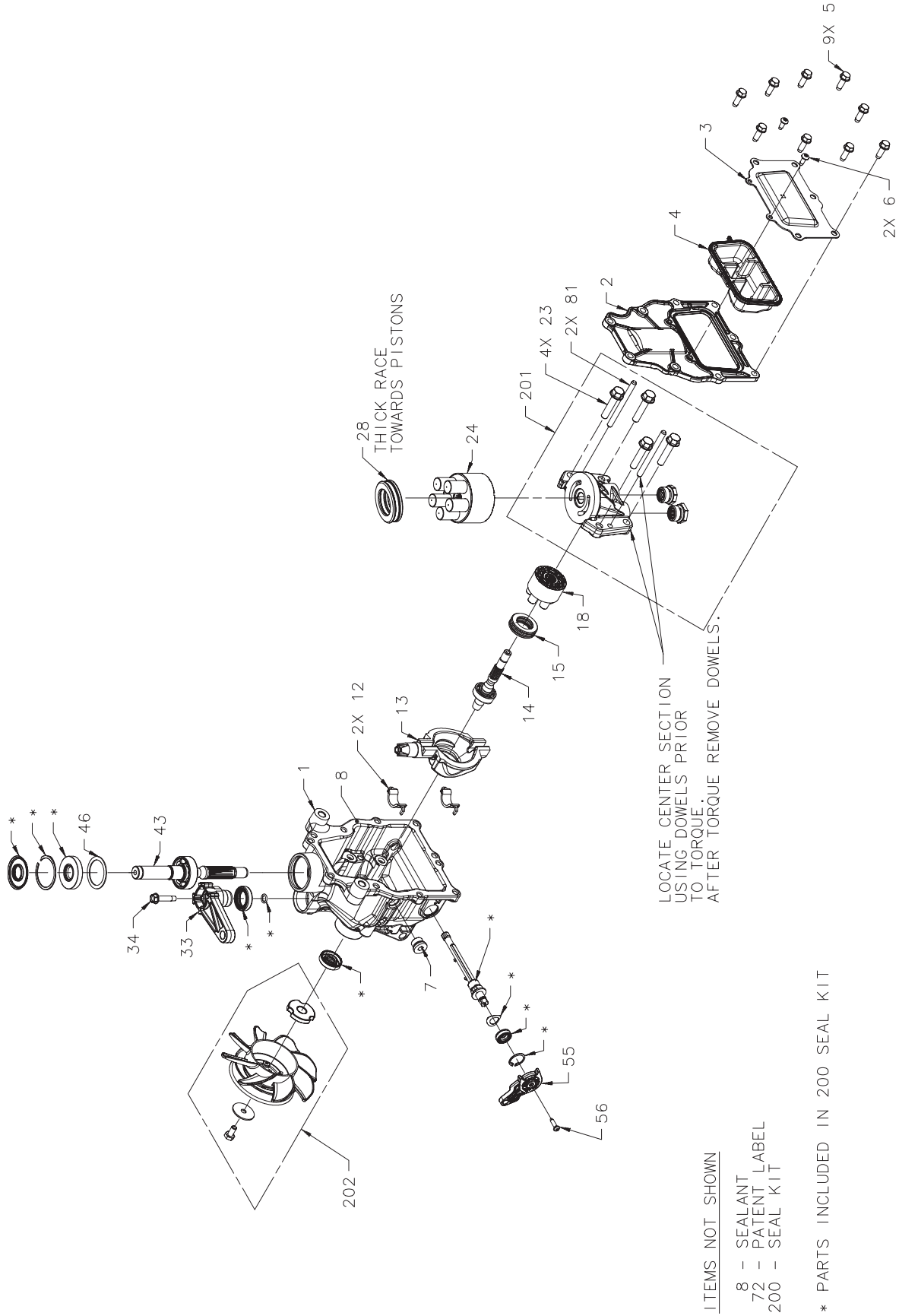
REDUCTION DRIVE

Model 926053, 054, 055, 056, 325, 326, 328, 329, 514

Item	Part No.	Qty.	Description
1	04513900	1	Shroud, Transmission
2	04371200	1	Bracket, Transmission
3	04438900	1	Transmission, RT-310
4	00190600	1	Sprocket/Gear 26T (Included w/item 32) (926053, 054, 055, 326, 328, 329)
	04510900	1	Sprocket/Gear 16T (Included w/item 32) (926056, 325, 514)
5	04376651	1	Pivot, Transmission Shift
6	04376751	1	Bracket, Shift Pivot
7	04376500	1	Rod, Transmission Shift
8	04437067	1	Rod, Bypass
9	04511800	1	Shaft, Pinion
10	04375800	1	Sprocket, Pinion 9T with Key
11	05708300	1	E-Ring
12	02466200	1	Roller Chain, 32 Pitches (926053, 054, 055, 326, 328, 329)
	03232800	1	Roller Chain, 26 Pitches (920056, 325, 514)
13	05500111	2	Bushing, Flange .625 x .750 x .500 x .875 (Included w/item 32) (926053, 054, 055, 326, 328, 329)
	05403800	2	Bearing, Needle (Included w/item 32) (926056, 325, 514)
14	05500035	1	Bushing, Sleeve, .635 x .880 x .305
15	05963300	1	Bolt, Hex .38-16X2.00 Grade 5
16	01123800	1	Friction Washer
17	07400034	4	Screw, Tapping Hex Washer Head Thread Rolling .25-20 x .50
18	08320900	1	Spring, Compression .187 x .56 x 1.62
19	06542000	1	Nut, Locking-Top-Flange .38-16
20	06543100	1	Nut, Locking-Top-Flange .31-18
21	05963700	2	Bolt, Hex .31-18 x 2.25 Grade 5
22	05946900	1	Bolt, Hex .31-18 x 1.00 Grade 5
23	06713500	2	Pin, Hair Internal .08 x .18 x 1.18
24	06436200	1	Washer, Flat-Steel .406 x .812 x .065
25	06436100	1	Washer, Flat-Steel .630 x 1.005 x .062 (926053, 054, 055, 326, 328, 329)
	06436100	2	Washer, Flat-Steel .630 x 1.005 x .062 (926056, 325, 514)
26	05500029	1	Spacer, .635 x .880 x .611
27	00503500	1	Tab, Anti Rotation
28	06606100	1	Key, Square .188 x .750 x .188
29	06714500	2	Pin, Spring Clip
30	07061300	1	Zerk, Fitting .25 x .125 Drive In
31	05800205	1	Pin, Groove .125 x 1.00 Type E
32	52601500	1	Sprocket/Gear 26T w/Bushings (Includes items 4 and 13) (926053, 054, 055, 326, 328, 329)
	52611500	1	Sprocket/Gear 16T w/Bushings (Includes items 4 and 13) (926056, 325, 514)
33	06701900	1	Pin, Hair Internal .06 x .18 x .77
34	06529200	2	Nut, Hex .31-18
35	06435700	2	Washer, Flat Steel .38 x .875 .083
36	06307400	2	Washer, Locking .31 x .097
37	06800028	2	Rivet, Pop .187
38	04662900	1	Transmission Mount (926053, 054, 055, 326, 328, 329)
	04663200	1	Transmission Mount (926056, 325, 514)
39	05500111	2	Bushing, Flange
40	05500029	1	Spacer

TRANSMISSION

Model 926053, 054, 055, 056, 325, 326, 328, 329, 514



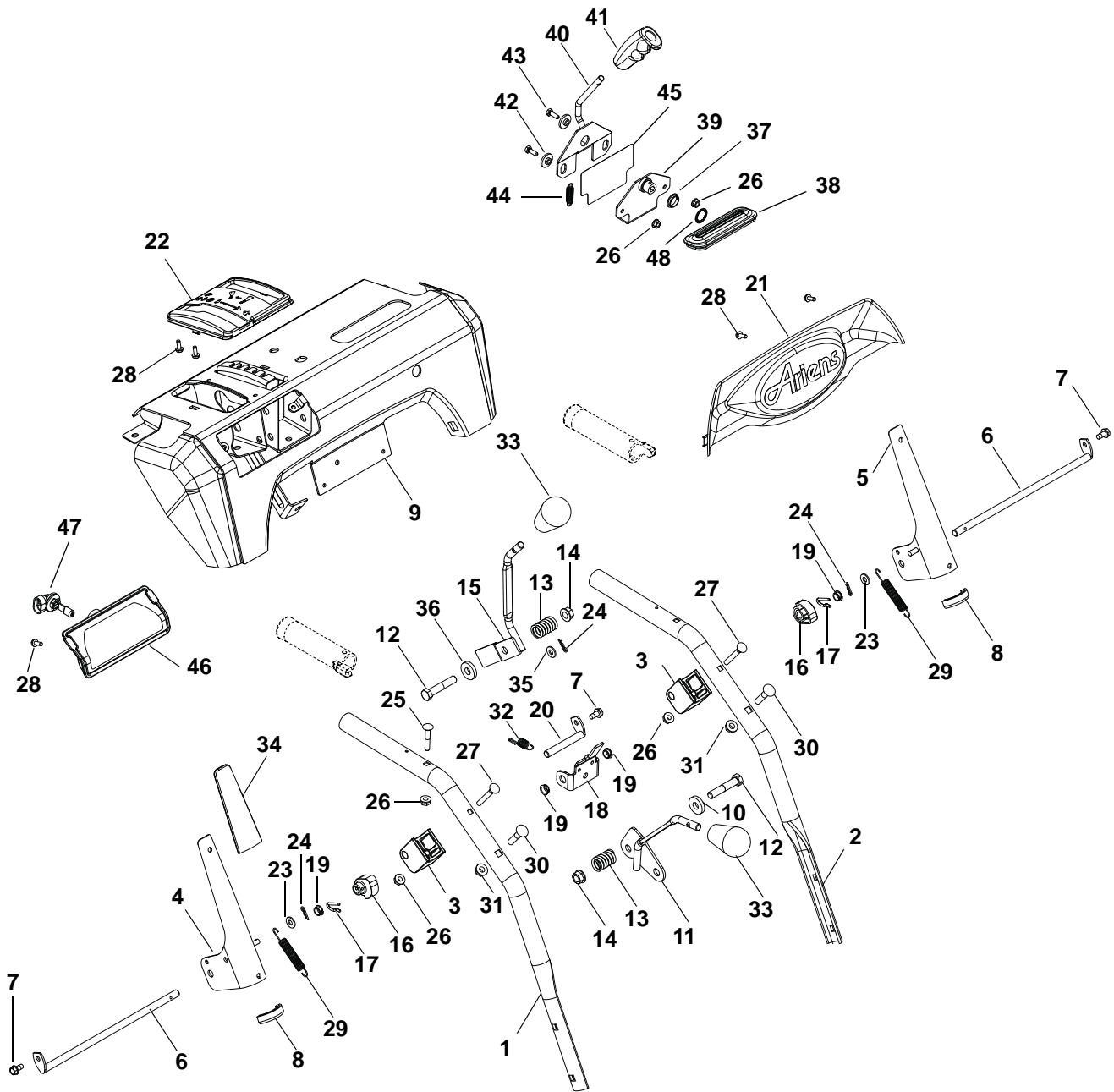
TRANSMISSION

Model 926053, 054, 055, 056, 325, 326, 328, 329, 514

Item	Ariens p/n	Hydro-Gear p/n	Qty.	Description
1	27104800	54217	1	Housing Main, Shot
2	27104900	53934	1	Cover
3	27105000	53943	1	Plate, Expansion
4	27105100	53940	1	Bladder
5	21543759	50752	9	Screw, Hex Flange 1/4-20 x .75
6	21543751	50653	2	Bolt, Self Tapping 10-32 x .5
7	08613700	9005110-5600	1	Plug, 9/16-18 Straight Thread Socket Head
8	21543771	50928	1	Tube, Sealant
12	27105200	54229	2	Bearing, Cradle
13	27105300	53912	1	Swash Plate
14	27105400	72334	1	Kit, Input Shaft
15	27105500	53894	1	Bearing, 21 x 35 x 10
18	27105600	72335	1	Kit, 3cc Block
23	27105700	53256	4	Screw, HFHCS 5/16-18 x 1.5
24	21543889	70331	1	Kit, 10cc Block
28	08609100	50551	1	Bearing, Thrust 30 x 52 x 13
33	27105800	54190	1	Arm, Control
34	27105900	53246	1	Screw, Hex Washer 1/4-20 x 1.125
43	27106000	72336	1	Kit, Motor Shaft
46	21543773	50951	1	Washer, Flat 1.23 x 1.57 x .04
55	27106100	54090	1	Arm, Bypass
56	27106200	54051	1	Screw, M4 x 16, Wuplast
62	27106300	53949	1	Hub, Pulley Dia 1.41
72		54187	1	Label, Patent
81	27106400	9004820-2536	2	Pin, Straight Headless
200	27106500	72337	1	Kit, Seal
201	27106600	72338	1	Kit, Center Section
202	52611600	72339	1	Kit, Fan/Pulley

HANDLEBARS, LEVER CONTROLS, PANEL AND DASH

Model 926053, 054, 055, 056, 325, 326, 328, 329, 514



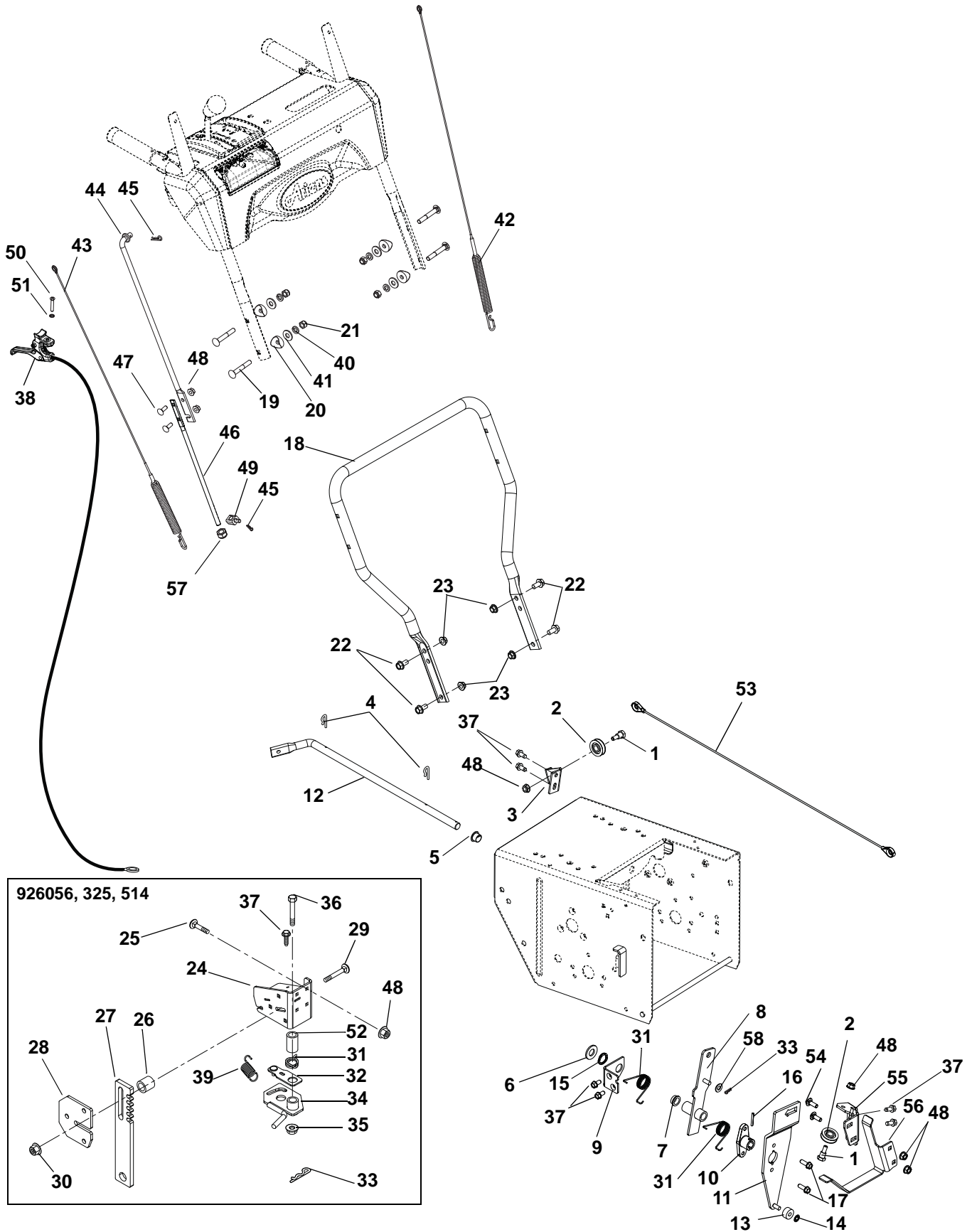
HANDLEBARS, LEVER CONTROLS, PANEL AND DASH

Model 926053, 054, 055, 056, 325, 326, 328, 329, 514

Item	Part No.	Qty.	Description
1	52610200	1	Handlebar, Upper, Right Hand with Heated Hand Grip (Includes Item 12 and 14 on page 27)
2	52610300	1	Handlebar, Upper, Left Hand with Heated Hand Grip (ncludes Item 12 and 14 on page 27)
3	04310100	2	Clutch Paddle Block
4	04310551	1	Clutch Handle, Right Hand
5	04310451	1	Clutch Handle, Left Hand
6	04320600	2	Rod, Paddle Mount
7	07400034	3	Screw, Tapping Hex Washer Head Thread Rolling .25-20 x .50
8	07500103	2	Edging, Clutch Handle
9	52612200	1	Control Panel with Decal (926053, 054, 055, 326, 328, 329)
	52612300	1	Control Panel with Decal (926056, 325)
	52612700	1	Control Panel with Decal (926514)
10	06444000	1	Washer, Flat Steel .406 x 1.00 x .188
11	04320200	1	Lever, Shift
12	05963300	2	Bolt, Hex .38-16 x 2.00
13	08335700	2	Spring
14	06542000	2	Nut, Locking Top Flange .38-16
15	04320300	1	Lever, Deflector
16	04322100	2	Cam, Interlock
17	06714500	2	Pin, Spring Clip
18	04320400	1	Interlock Arm
19	05500020	4	Bushing, Polyliner
20	04320500	1	Rod, Pivot
21	04304400	1	Dash Bezel
22	04511000	1	Shift Bezel
23	06437300	2	Washer, Flat Steel .281 x .62 x .065
24	06701900	3	Pin, Hair, Internal .06 x .18 x .77
25	06220100	1	Bolt, Round Head Extra Long Square Neck .25-20 x 1.25 (926056, 325, 514)
	06220100	2	Bolt, Round Head Extra Long Square Neck .25-20 x 1.25 (926053, 054, 055, 326, 328, 329)
26	06500710	5	Nut, Locking Center Flange .25-20 (926056, 325, 514)
	06500710	6	Nut, Locking Center Flange .25-20 (926053, 054, 055, 326, 328, 329)
27	06209300	2	Bolt, Round Head Extra Long Square Neck .25-20 x 2.00
28	07400107	6	Screw, Tapping Hex Head Boss #10 x .50
29	08300527	2	Spring
30	06212100	2	Bolt, Round Head Square Neck .31-18 x 1.50
31	06543100	2	Nut, Locking Top Flange .31-18
32	08337000	1	Spring
33	07500209	2	Knob
34	07500211	2	Sleeve, Clutch Handle
35	05501012	1	Bushing, Sleeve
36	06439300	1	Washer, Flat Steel .380 x 1.50 x .062
37	05500027	1	Bushing, Polyliner
38	04318600	1	Grommet
39	00184800	1	Mount, Chute Control
40	04321800	1	Lever, Chute Control
41	07500205	1	Control Handle
42	05500004	2	Bushing, Flange
43	05946800	2	Bolt, Hex .25-20 x .75
44	08310900	1	Spring
45	04532300	1	Tape, Quickturn
46	04307600	1	Headlight Assembly
47	00432600	1	Bulb, Light
48	07000036	1	Nut, Push - .75

HANDLEBARS, CABLES AND CONTROLS

Model 926053, 054, 055, 056, 325, 326, 328, 329, 514



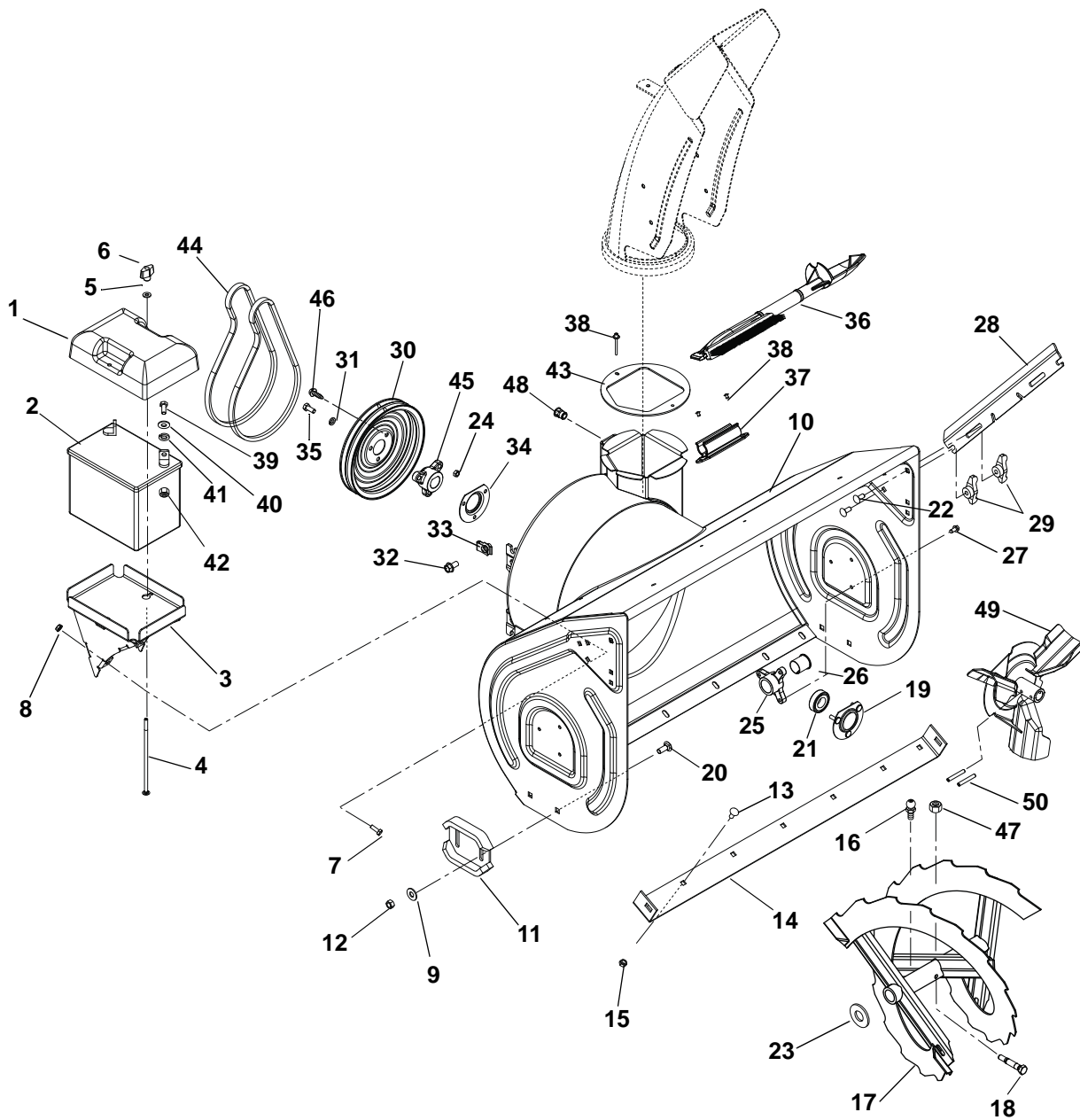
HANDLEBARS, CABLES AND CONTROLS

Model 926053, 054, 055, 056, 325, 326, 328, 329, 514

1	07000021	2	Bolt, Shoulder
2	07300012	2	Pulley, Cable
3	00373051	1	Bracket, Cable Pulley
4	06944800	2	Clip, Spring
5	05500026	1	Bushing, Polyliner
6	06441900	1	Washer, Flat Steel .531 x 1.06 x .095
7	05501119	1	Bushing, Flange
8	04424151	1	Arm, Traction Clutch
9	04511651	1	Bracket, Support
10	00384200	1	Hub, Brake Arm
11	02954400	1	Arm, Idler – Attachment
12	00384351	1	Arm, Attachment
13	05500037	1	Bushing, Sleeve
14	05717600	1	Ring, Retaining External .250 x .010
15	08300534	1	Wave Washer
16	05800900	1	Pin, Roll .125 x 1.00
17	07414200	2	Screw, Tapping Hex Washer Head Thread Rolling .25-20 x .75
18	00373251	1	Handlebar, Lower
19	06221600	4	Bolt, Round Head Square Neck .31-18 x 2.25
20	07500005	4	Spacer, Handlebar
21	06530200	4	Nut, Locking Nylon .31-18
22	07028500	4	Bolt, Serrated Hex Flange Washer Head .38-16 x .75
23	06542000	4	Nut, Locking-Top-Flange .38-16
24	00373751	1	Bracket, Height Adjuster (926056, 325, 514)
25	06219900	4	Bolt, Round Head Square Neck .25-20 x .75 Grade 5 (926056, 325, 514)
26	01103100	3	Spacer (926056, 325, 514)
27	00383851	1	Stop, Height Adjuster (926056, 325, 514)
28	03294151	1	Plate, Height Adjuster (926056, 325, 514)
29	06200008	3	Bolt, Round Head Square Short Neck .31-18 x 1.25 Grade 5 (926056, 325, 514)
30	06543100	3	Nut, Locking Top Flange .31-18 (926056, 325, 514)
31	08300015	3	Spring (926056, 325, 514)
	08300015	2	Spring (926053, 054, 055, 326, 328, 329)
32	03376200	1	Arm, Overtravel (926056, 325, 514)
33	06701900	2	Pin, Hair Internal .06 x .18 x .77 (926056, 325, 514)
	06701900	1	Pin, Hair Internal .06 x .18 x .77 (926053, 054, 055, 326, 328, 329)
34	03294000	1	Lock, Height Adjuster (926056, 325, 514)
35	06534800	1	Nut, Locking Center Flange .38-16 (926056, 325, 514)
36	05958500	1	Bolt, Hex .38-16 x 1.75 Grade 5 (926056, 325, 514)
37	07400034	6	Screw, Tapping Hex Washer Head Thread Rolling .25-20 x .50 (926053, 054, 055, 326, 328, 329)
	07400034	7	Screw, Tapping Hex Washer Head Thread Rolling .25-20 x .50 (926056, 325, 514)
38	06900510	1	Cable, Track Remote (926056, 325, 514)
39	08300103	1	Spring (926056, 325, 514)
40	06307400	4	Washer, Locking .312 x .097
41	06435700	4	Washer, Flat Steel .38 x .875 x .083
42	06900502	1	Cable, Traction
43	06900439	1	Cable, Auger
44	04336367	1	Rod, Shift, Upper
45	06713500	2	Pin, Hair Internal .08 x .18 x 1.18
46	04378267	1	Rod, Shift, Lower
47	06219900	2	Bolt, Round Head Square Neck .25-20 x .75
48	06500710	6	Nut, Locking Center Flange .25-20 (926053, 054, 055, 326, 328, 329)
	06500710	10	Nut, Locking Center Flange .25-20 (926056, 325, 514)
49	00386700	1	Pivot, Shift Rod
50	06100007	1	Screw, Machine, Oval Head .25-20 x 1.50 (926056, 325, 514)
51	06305200	1	Washer, Lock Internal .25 (926056, 325, 514)
52	05500106	1	Bushing, Sleeve (926056, 325, 514)
53	06900527	1	Cable
54	06219900	2	Bolt, Round Head Square Neck .25-20 x .75 Grade 5
55	04434351	1	Bracket, Clutch Cable
56	04519951	1	Finger, Belt Flat
57	06535900	1	Nut, Hex Jam .38-16
58	06437300	1	Washer, Flat Steel .281 x .62 x .065

CHUTE, AUGER AND BATTERY

Model 926053, 054, 055, 056, 325, 326, 328, 329, 514



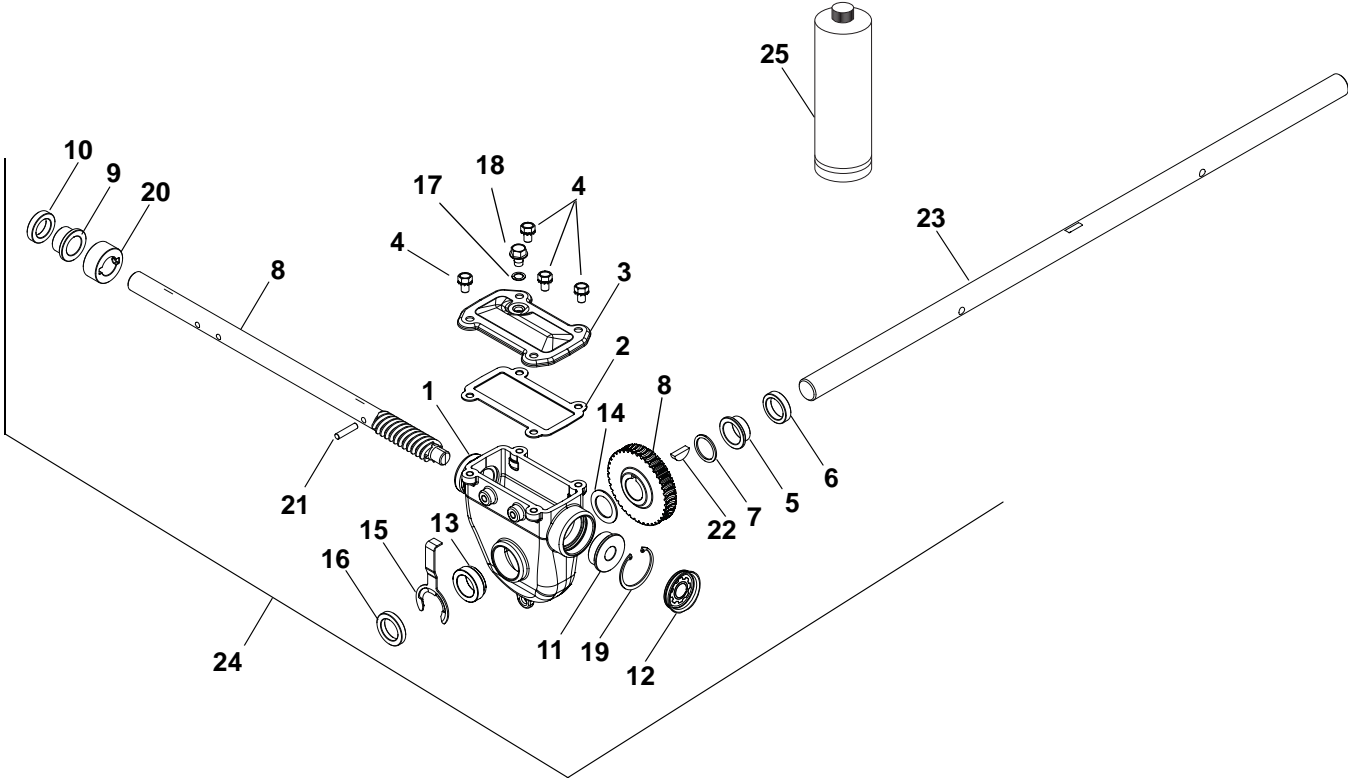
CHUTE, AUGER AND BATTERY

Model 926053, 054, 055, 056, 325, 326, 328, 329, 514

Item	Part No.	Qty.	Description
1	04912900	1	Cover, Battery (926514)
2	n/a	A/R	Battery Recommend 240 Minimum CCA at 0° F. Size U1R or U1L (926514)
3	52612800	1	Battery Tray (Includes Item 8) (926514)
4	06220400	2	Bolt, Round Head Square Neck .25-20 x 7.00 (926514)
5	06437300	2	Washer, Flat Steel .281 x .62 x .065 (926514)
6	07500104	2	Knob, Wing .25-20 (926514)
7	05900019	4	Bolt, Hex Washer Head .25-20 x .75 Grade 5 (926514)
8	07009000	4	Nut, Retainer .25-20 x .56 (Included in Item 3) (926514)
9	06435900	4	Washer, Flat Steel .438 x 1.00 x .083
10	52607900	1	Blower Housing with Decal 28" (926053, 056, 325, 326)
	52608000	1	Blower Housing with Decal 32" (926054, 328)
	52608100	1	Blower Housing with Decal 32" (926514)
	52608200	1	Blower Housing with Decal 36" (926055, 329)
11	04148959	2	Skid Shoe
12	06529600	4	Nut, Locking Center .38-16
13	06200209	5	Bolt, Modified Head Carriage .31-18 x .62 (926053, 056, 325, 326)
	06200209	7	Bolt, Modified Head Carriage .31-18 x .62 (926054, 055, 328, 329, 514)
14	04182159	1	Scraper Blade 28" (926053, 056, 325, 326)
	04182059	1	Scraper Blade 32" (926054, 328, 514)
	04181659	1	Scraper Blade 36" (926055, 329)
15	06543100	5	Nut, Locking Top Flange .31-18 (926053, 056, 325, 326)
	06543100	7	Nut, Locking Top Flange .31-18 (926054, 055, 328, 329, 514)
16	07061300	4	Zerk, Fitting .25 x .125 Drive-In
17	52606400	1	Rake, Left Hand with Zerks, 28" (15.75" O.D.) (Includes Item 16) (926053, 056, 325, 326)
	52606500	1	Rake, Right Hand with Zerks, 28" (15.75" O.D.) (Includes Item 16) (926053, 056, 325, 326)
	52606600	1	Rake, Left Hand with Zerks, 32" (15.75" O.D.) (Includes Item 16) (926054, 328, 514)
	52606700	1	Rake, Right Hand with Zerks, 32" (15.75" O.D.) (Includes Item 16) (926054, 328, 514)
	52606800	1	Rake, Left Hand with Zerks, 36" (15.75" O.D.) (Includes Item 16) (926055, 329)
	52606900	1	Rake, Right Hand with Zerks, 36" (15.75" O.D.) (Includes Item 16) (926055, 329)
18	52100100	2	Shear Bolt Service Assembly (Includes Item 47)
19	00428700	1	Bearing Flange
20	06212000	4	Bolt, Round Head Square Short Neck .38-16 x 1.00
21	05400713	1	Bearing
22	06220800	4	Bolt, Round Head Square Short Neck .31-18 x .75
23	06436300	2	Washer, Flat Steel 1.01 x 1.505 x .062
24	06529700	3	Nut, Locking Center .25-20
25	00275100	2	Bushing, Rake Shaft
26	05500030	2	Bushing, Polyliner
27	07400034	6	Screw, Tapping Hex Washer Head Thread Rolling .25-20 x .50
28	00262159	2	Cutter, Drift
29	07500105	4	Knob, Wing .31-18
30	00268700	1	Pulley, Attachment
31	06307400	1	Washer, Locking .312 x .097
32	07028500	2	Bolt, Serrated Hex Flange Washer Head .38-16 x .75
33	07053300	2	Nut, Retainer .38-16 x .37
34	01014200	1	Bearing Flange
35	05947300	1	Bolt, Hex .31-24 x .75 Grade 5
36	03901400	1	Snow Clean Out Device with Brush
37	00170300	1	Mount, Snow Clean Out Device
38	06800028	4	Rivet, Pop .187
39	05946800	2	Bolt, Hex .25-20 x .75 Grade 5 (926514)
40	06439500	2	Washer, Flat Steel .265 x .50 x .087 (926514)
41	06308400	2	Washer, Locking .25 x .062 (926514)
42	06533200	2	Nut, Hex .25-20 (926514)
43	00600100	1	Baffle
44	07200608	1	V-Belt, Matched Set, Auger
45	00268703	1	Pulley Hub
46	07411500	3	Screw, Tapping Hex Washer Head Thread Rolling .31-18 x .50
47	06529800	2	Nut, Locking Center .31-18 (Included with Item 18)
48	07001612	2	Nut, Threaded Insert .38-16 (Included with item 10)
49	00485551	1	Impeller
50	05803700	2	Pin, Roll .250 x 1.75

GEAR CASE – CAST IRON

Model 926053, 054, 055, 056, 325, 326, 328, 329, 514



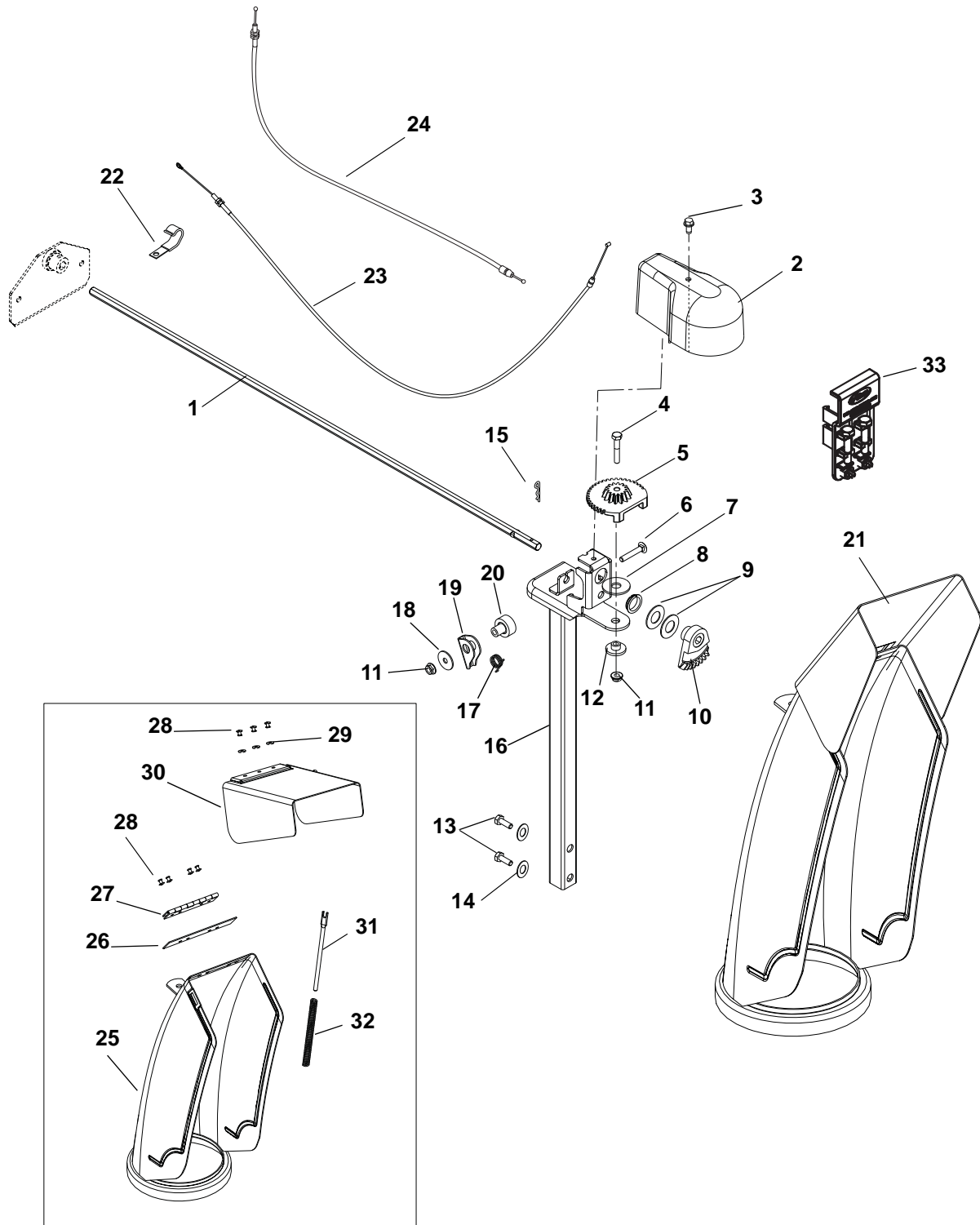
GEAR CASE – CAST IRON

Model 926053, 054, 055, 056, 325, 326, 328, 329, 514

Item	Part No.	Qty.	Description
1	04276900	1	Gear Case
2	04282500	1	Gasket
3	04280351	1	Cover, Top
4	05901509	4	Bolt, .31-18 x .50 SEMS
5	05501025	1	Bushing, Flange
6	05600511	1	Seal, Oil
7	06436300	1	Washer, Flat Steel 1.010 x 1.505 x .062
8	52609600	1	Worm Shaft and Worm Gear Set
9	05501024	1	Bushing, Flange
10	05600512	1	Seal, Oil
11	05501027	1	Bushing, Flange
12	04302900	1	Cover, Front
13	05501033	1	Bushing, Flange
14	06400332	1	Washer, Flat Steel 1.010 x 1.250 x .068
15	04323700	1	Bushing Retainer
16	05600510	1	Seal, Oil
17	06400920	1	Washer, Bonded Seal
18	07400110	1	Screw, Tapping Hex Washer Head Rolok .38-16 x .50
19	05702100	1	Ring, Retaining, Internal 1.750 x .062
20	04277100	1	Thrust Collar
21	05800208	1	Pin, Straight .250 x 1.12 6150
22	06608800	1	Key, Woodruff .25 x .875 Hardened
23	03392400	1	Shaft, Rake, 28" (926053, 056, 325, 326)
	03392500	1	Shaft, Rake, 32" (926054, 328, 514)
	03392600	1	Shaft, Rake, 36" (926055, 329)
24	52609700	1	Gear Case Assembly (Includes Items 1 – 23) (926053, 056, 325, 326)
	52609800	1	Gear Case Assembly (Includes Items 1 – 23) (926054, 328, 514)
	52609900	1	Gear Case Assembly (Includes Items 1 – 23) (926055, 329)
25	00068800	1	Gear Lube, 8 oz Bottle

DISCHARGE CHUTE

Model 926053, 054, 055, 056, 325, 326, 328, 329, 514



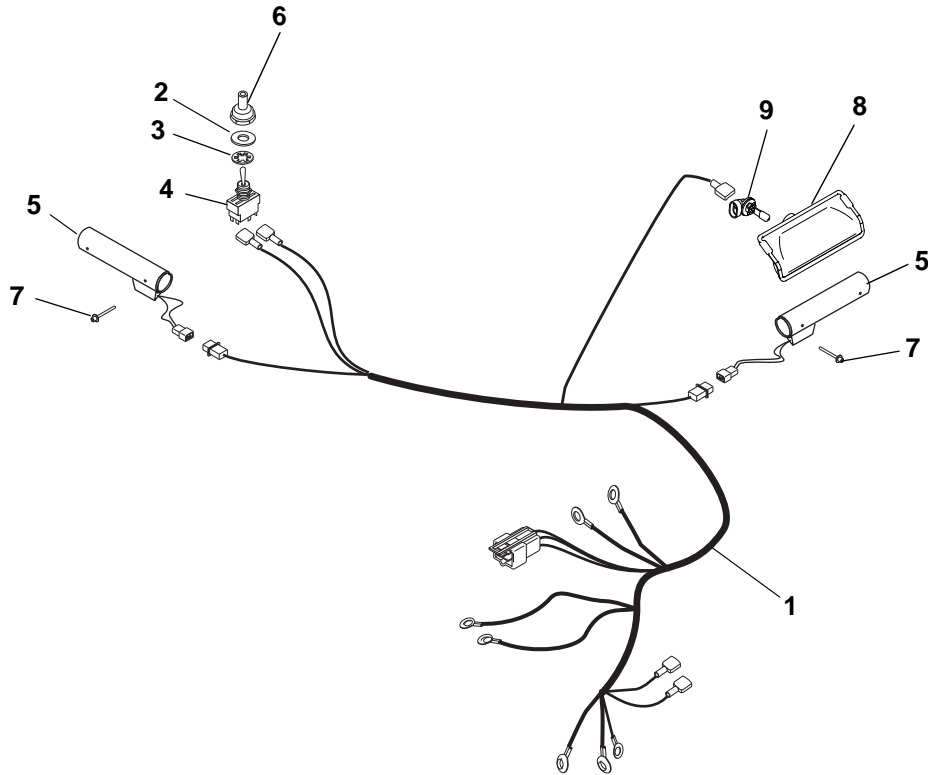
DISCHARGE CHUTE

Model 926053, 054, 055, 056, 325, 326, 328, 329, 514

Item	Part No.	Qty.	Description
1	04507700	1	Rod, Chute Rotation
2	00261700	1	Cover, Chute Gear
3	07400104	1	Screw, Tapping Large Hex Washer Head Thread Rolling .25-20 x .50
4	05952500	1	Bolt, Hex .25-20 x 1.50 Grade 5
5	03898700	1	Gear, Chute, Locking
6	06222300	1	Bolt, Round Head Square Neck .25-20 x 1.50
7	06400904	1	Washer, Flat Nylon .515 x 1.375 x .093
8	05500027	1	Bushing, Polyliner
9	06441400	2	Washer, Flat Steel .754 x 1.125 x .062
10	00184300	1	Gear, Chute
11	06500710	2	Nut, Locking Center Flange .25-20
12	05500920	1	Bushing, Flange
13	05958500	2	Bolt, Hex .38-16 x 1.75 Grade 5
14	06308800	2	Washer, Locking .38 x .094
15	06713500	1	Pin, Hair
16	03897451	1	Pedestal, Chute
17	08300014	1	Spring
18	06426600	1	Washer, Flat Steel .281 x 1.00 x .063
19	00180900	1	Arm, Locking
20	05500024	1	Bushing, Lock Arm
21	52610500	1	Chute, Discharge w/Cap and Decal (includes items 25-30)
22	06909400	1	J-Clamp
23	06900406	1	Cable, Deflector
24	06900421	1	Cable, Chute Lock
25	04346859	1	Chute, Discharge
26	00628400	1	Seal
27	00170100	1	Hinge
28	06800028	7	Rivet
29	06400003	3	Washer
30	52611000	1	Cap, Deflector w/Decal
31	00389000	1	Rod, Deflector Cap
32	08300013	1	Spring
33	52104700	1	Holder w/Spare Shear Bolts

ELECTRICAL

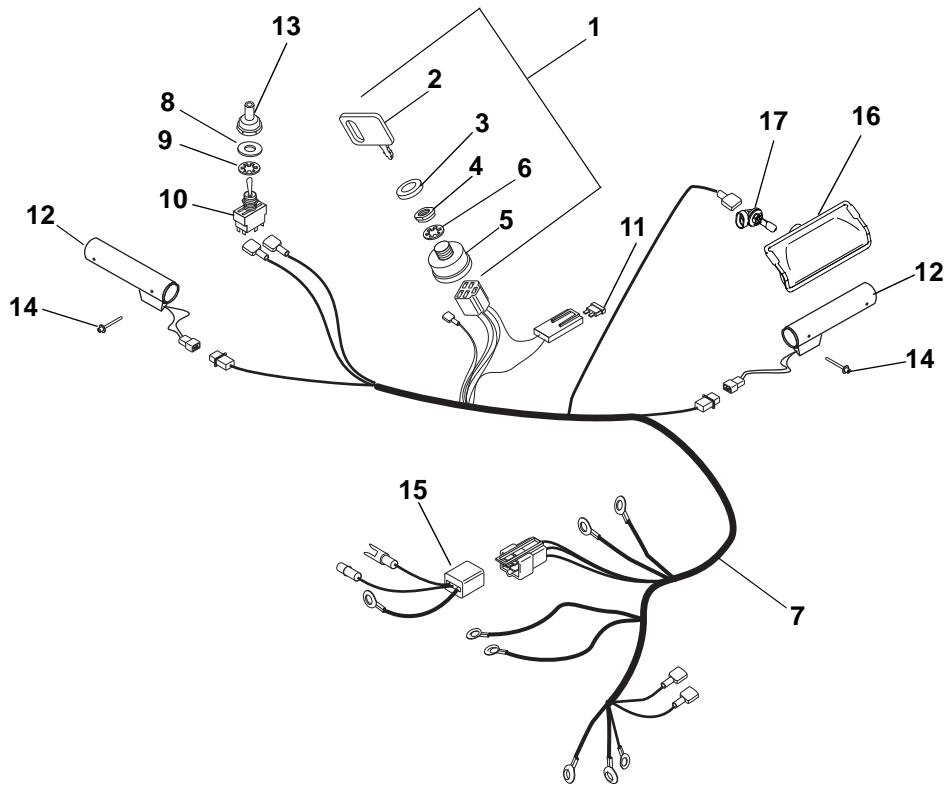
Model 926053, 054, 055, 056, 325, 326, 328, 329



Item	Part No.	Qty.	Description
1	04329600	1	Harness, Wire – Light and Heated Hand Grips
2	06403800	1	Washer, Flat Steel .505 x .875 x .024
3	06310900	1	Washer, Locking Internal .563 x .040
4	02485700	1	Switch, On/Off – Heated Hand Grips
5	07500015	2	Heated Hand Grip with Terminal (Recommend Loctite E90-FL Epoxy for Installation)
6	09207600	AR	Boot, Switch (Optional)
7	06800038	4	Rivet, Pop #43 .125 x .313
8	04307600	1	Headlight Assembly
9	00432600	1	Bulb, Light

ELECTRICAL

Model 926514



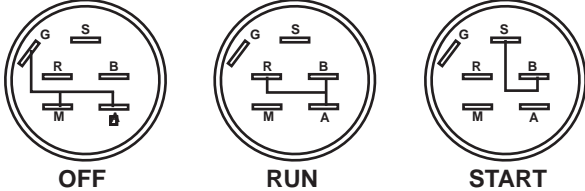
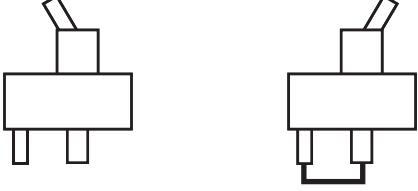
Item	Part No.	Qty.	Description
1	52709300	1	Switch Assembly (Includes Items 2 – 6)
2	02460700	1	Key with Cap
3	07517700	1	Cap, Ignition Switch
4	06517300	1	Nut, Panel .625-32
5	02739600	1	Ignition Switch Assembly
6	06306900	1	Washer, Locking Internal .625 x .045
7	04682900	1	Harness, Wire – 12V, Light and Heated Hand Grips
8	06403800	1	Washer, Flat Steel .505 x .875 x .024
9	06310900	1	Washer, Locking Internal .563 x .040
10	02485700	1	Switch, On/Off – Heated Hand Grips
11	00524700	1	15 AMP Fuse
12	07500015	2	Heated Hand Grip with Terminal (Recommend Loctite E90-FL Epoxy for Installation)
13	09207600	AR	Boot, Switch (Optional)
14	06800038	4	Rivet, Pop #43 .125 x .313
15	04683000	1	Harness Adapter
16	04307600	1	Headlight Assembly
17	00432600	1	Bulb, Light

CONTINUITY AND WIRING DIAGRAMS

Model 926053, 054, 055, 056, 325, 326, 328, 329, 514

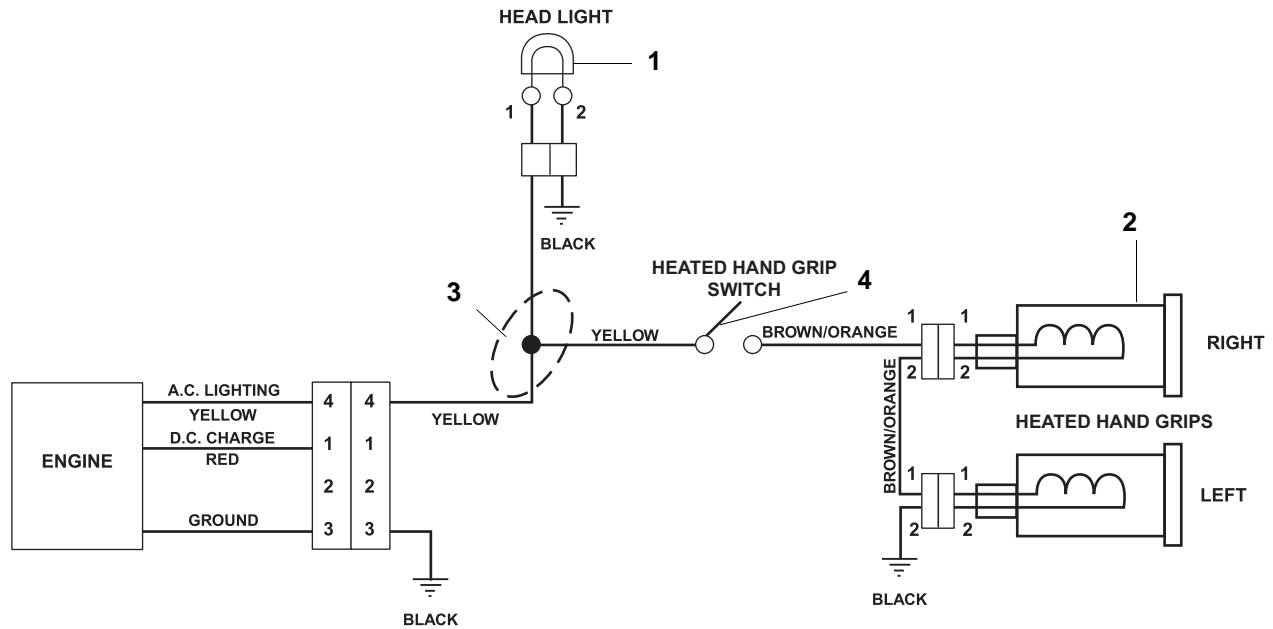
The diagrams below show the various states of connection for electrical components.
The solid lines on switches show continuity.

NOTE: All switches are viewed from the rear.

Key Switch (926514) (02739600)	Heated Hand Grip Switch (02485700)
 <div style="display: flex; justify-content: space-around; margin-top: 5px;"> OFF RUN START </div>	 <div style="display: flex; justify-content: space-around; margin-top: 5px;"> HEATED HAND GRIPS OFF HEATED HAND GRIPS ON </div>

CONTINUITY AND WIRING DIAGRAMS

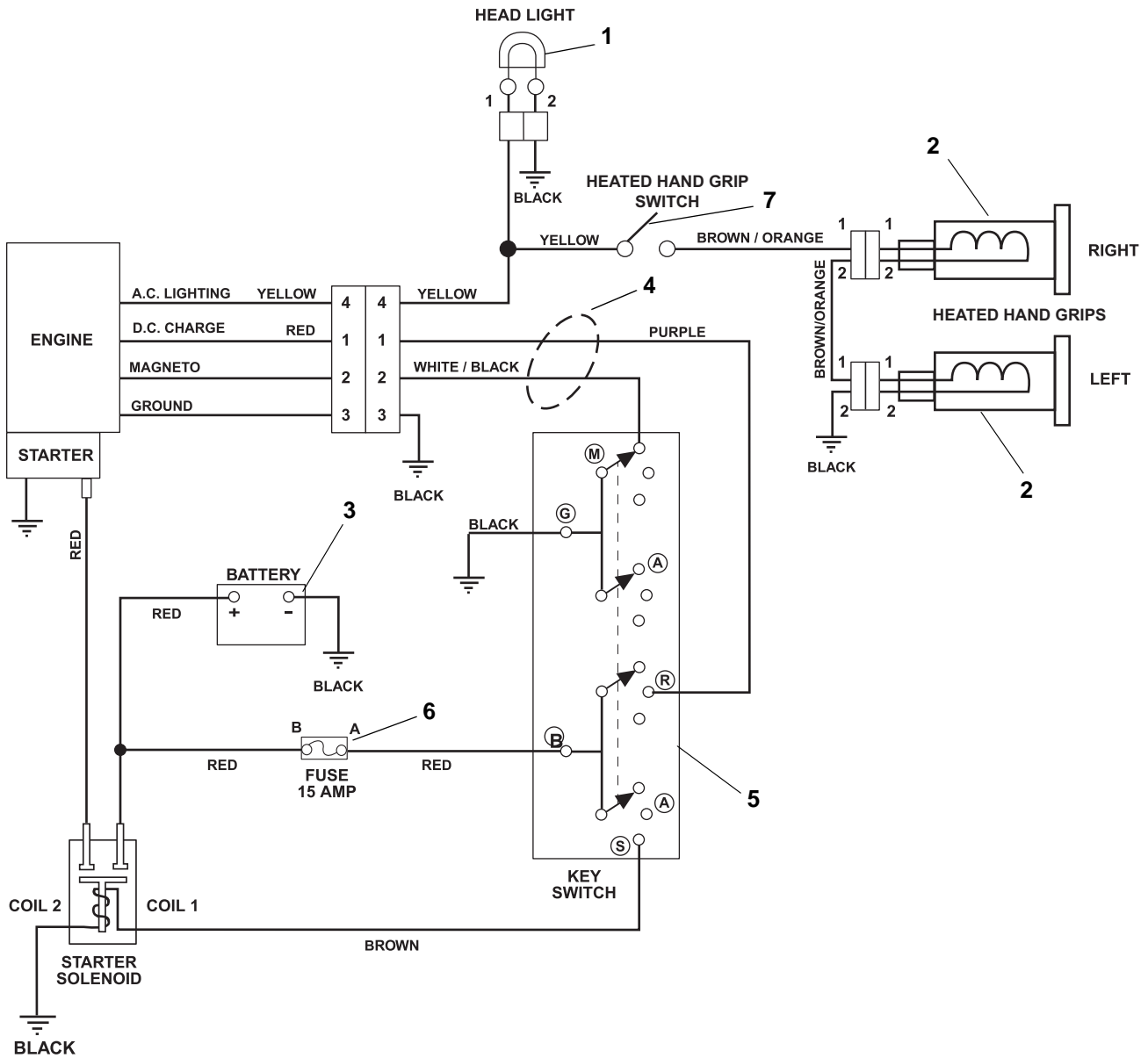
Model 926053, 054, 055, 326, 328, 329



Item	Part No.	Qty.	Description
1	04307600	1	Headlight Assembly
2	07500015	2	Heated Hand Grip with Terminal (Recommend Loctite E90-FL Epoxy for Installation)
3	04329600	1	Harness, Wire, Light and Heated Hand Grips
4	02485700	1	Switch, On/Off Heated Hand Grips

CONTINUITY AND WIRING DIAGRAMS

Model 926514



Item	Part No.	Qty.	Description
1	04307600	1	Head Light Assembly
2	07500015	2	Heated Hand Grip with Terminal (Recommend Loctite E90-FL Epoxy for Installation)
3	N/A	AR	Battery (Recommend 240 Minimum CCA at 0° F. Size U1R or U1L)
4	04682900	1	Harness, Wire-12V, Light and Heated Hand Grips
5	52709300	1	Switch Assembly
6	00524700	1	15 AMP Fuse
7	02485700	1	Switch, On/Off Heated Hand Grips



THE KING OF SNOW®

655 West Ryan Street
Brillion, WI 54110
920-756-4688
Fax 920-756-2407
www.ariens.com

An *Ariens* Company Brand