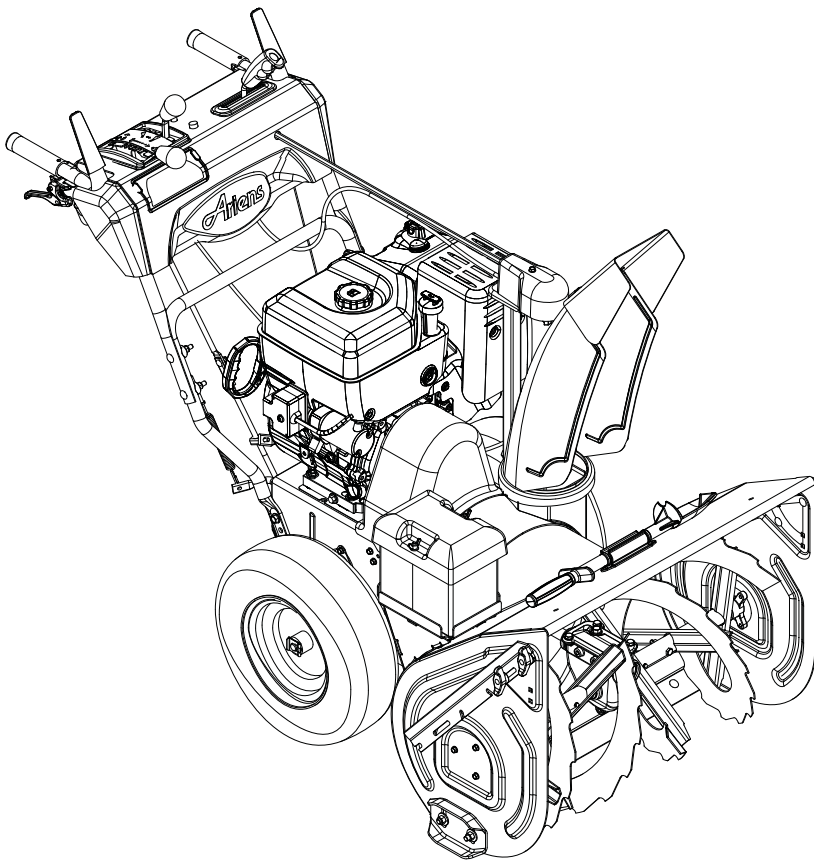




THE KING OF SNOW®

# Sno-Thro® 926 Series

## Parts Manual



### Models

- 926038 – Pro 28  
(SN 095000+)
- 926039 – Pro 32  
(SN 095000+)
- 926040 – Pro 36  
(SN 095000+)
- 926042 – Pro 28 Track  
(SN 095000+)
- 926513 – Pro 32 12V  
(SN 095000+)
- 926321 – Pro 28 CE  
(SN 095000+)
- 926324 – Pro 28 Track CE  
(SN 095000+)
- 926516 – Pro 32 12V  
(SN 000101+)



The use of any gasoline exceeding 10% ethanol (E10) or 10% MTBE will void the product warranty.  
L'utilisation d'une essence contenant plus de 10% d'éthanol (E10) ou de 10% de MTBE annule la garantie.  
El uso de cualquier otro tipo de gasolina con un porcentaje superior al 10% de etanol (E10) o al 10% de MTBE invalidará la garantía del producto.

## THE MANUAL

---

Before you operate your unit, carefully and completely read manuals supplied with the unit. The contents will provide you with an understanding of safety instructions and controls during normal operation and maintenance.

For your safety and the safety of others always read, understand, and follow all DANGER, WARNING, and CAUTION messages found in manuals and on safety decals.

Hardware descriptions are given in decimals.

Decimals to Fractions			
.063	1/16	.563	9/16
.125	1/8	.625	5/8
.188	3/16	.688	11/16
.250	1/4	.750	3/4
.313	5/16	.813	13/16
.375	3/8	.875	7/8
.438	7/16	.938	15/16
.500	1/2	1.00	1

## SERVICE AND REPLACEMENT PARTS

---

When ordering replacement parts or making service inquiries, know the Model and Serial numbers of your unit and engine.

Numbers are located on the product registration card in the unit literature package. They are printed on a serial number label, located on the frame of your unit.

• Record Unit Model and Serial numbers here:

• Record Engine Model and Serial numbers here:

## UNAUTHORIZED REPLACEMENT PARTS

Use only Ariens replacement parts. The replacement of any part on this vehicle with anything other than an Ariens authorized replacement part may adversely affect the performance, durability, or safety of this unit and may void the warranty. Ariens disclaims liability for any claims or damages, whether warranty, property damage, personal injury or death arising out of the use of unauthorized replacement parts.

## PRODUCT REGISTRATION

---

The Ariens dealer must register the product at the time of purchase. Registering the product will help the company process warranty claims or contact you with the latest service information. All claims meeting requirements during the limited warranty period will be honored, whether or not the product registration card is returned. Keep a proof of purchase if you do not register your unit.

**Customer Note:** If Dealer does not register your product, please fill out, sign and return the product registration card to Ariens or go to [www.ariens.com](http://www.ariens.com).

## YOUR SATISFACTION IS IMPORTANT

---

**Questions? Please follow these helpful steps:**

1. Refer to the manuals supplied with your unit.  
They will guide you through safe and proper operation and maintenance.  
They contain specifications on your unit.  
If your questions are not answered in these manuals, go to step number two.
2. Contact Your Dealer.  
Our dealers will be happy to supply any service or advice required to keep your unit operating at peak efficiency.  
A factory trained staff is available to support your equipment needs. They stock genuine Ariens parts and lubricants manufactured with the same precision and skill as the original.  
If your questions are not resolved by the support staff, ask for the manager or owner.  
When contacting your Dealer supply your model and serial numbers.

## TO SPEED PARTS ORDERING:

1. Know the model and serial numbers of your unit.
2. Know the part number required.
3. Know the quantity required.
4. Know the part description.

# MODELS

---

## Domestic

### **Model 926038 (Pro 28)**

28" Sno-Thro, 120V Electric Start  
Serial No. 095000 and up

### **Model 926039 (Pro 32)**

32" Sno-Thro, 120V Electric Start  
Serial No. 095000 and up

### **Model 926040 (Pro 36)**

36" Sno-Thro, 120V Electric Start  
Serial No. 095000 and up

### **Model 926042 (Pro 28 Track)**

28" Sno-Thro, 120V Electric Start  
Serial No. 095000 and up

## CE

### **Model 926321 (Pro 28)**

28" Sno-Thro, 240V Electric Start  
Serial No. 095000 and up

### **Model 926324 (Pro 28 Track)**

28" Sno-Thro, 240V Electric Start  
Serial No. 095000 and up

## Global

### **Model 926513 (Pro 32)**

32" Sno-Thro, 12V Key Start  
Serial No. 095000 and up

### **Model 926516 (Pro 32)**

32" Sno-Thro, 12V Key Start  
Serial No. 000101 and up

# TABLE OF CONTENTS

---

## **DECALS**

---

Decals ..... 4

## **ENGINE AND DRIVE**

---

Engine and Belt Drive ..... 6

## **MAIN FRAME**

---

Speed Selector and Frame ..... 8  
Wheels and Axles ..... 10  
Track and Axles ..... 12  
Reduction Drive ..... 14

## **OPERATORS CONTROLS**

---

Handlebars, Lever Controls, Panel and Dash ..... 16  
Handlebars, Cables and Controls ..... 18

## **BLOWER**

---

Chute, Auger and Battery ..... 20  
Gear Case – Cast Iron ..... 22  
Discharge Chute ..... 24

## **ELECTRICAL SYSTEMS**

---

Electrical ..... 26  
Continuity and Wiring Diagrams ..... 27  
Continuity Diagram ..... 29  
Wiring Diagram ..... 29

# DECALS

Model 926038, 039, 040, 042, 513, 321, 324, 516



Item	Part No.	Qty.	Description
1	08000901	1	Decal, Control (926038, 039, 040, 321)
	08000840	1	Decal, Control – 12V (926513, 516)
	08000839	1	Decal, Control – Track (926042, 324)
2	08000633	1	Decal, Pro 28 (926038, 042, 321, 324)
	08000632	1	Decal, Pro 32 (926039, 513, 516)
	08000631	1	Decal, Pro 36 (926040)
3	08000519	1	Decal, Danger, Rotating Parts
4	08000520	1	Decal, Danger
5	08000639	1	Decal, Housing, Pro 28 (926038, 042, 321, 324)
	08000638	1	Decal, Housing, Pro 32 (926039, 513, 516)
	08000637	1	Decal, Housing, Pro 36 (926040)
6	08000630	1	Decal, Ariens Gear
7	08000836	1	Decal, Auto Differential

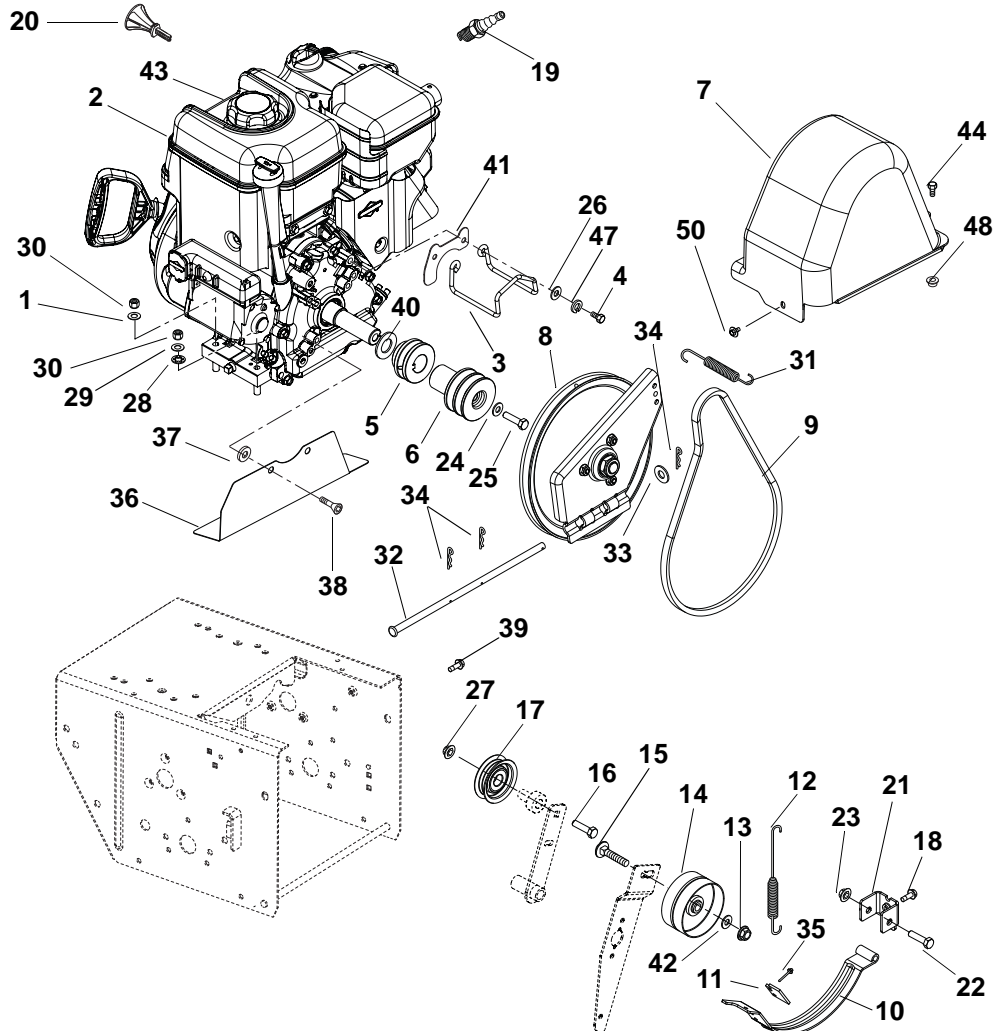
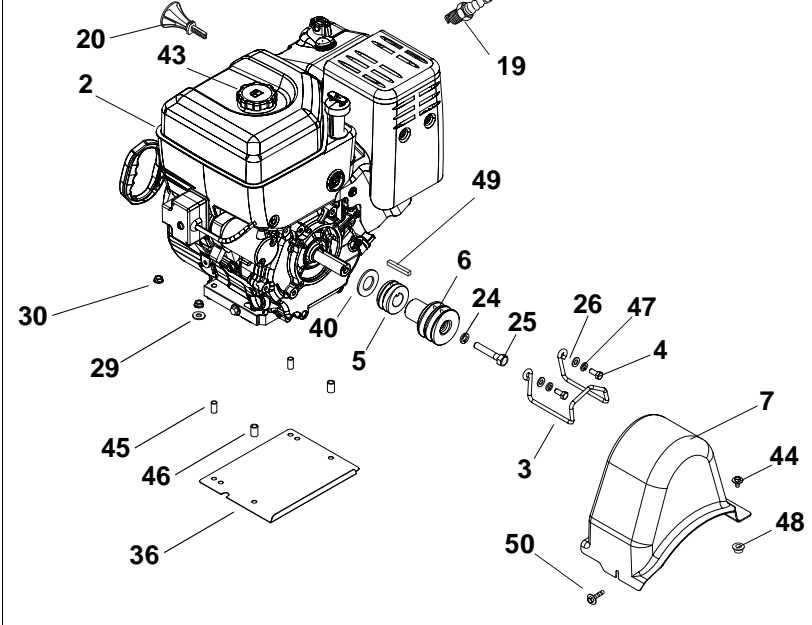
# NOTES

---

# ENGINE AND BELT DRIVE

Model 926038, 039, 040, 042, 513, 321, 324, 516

926038, 039, 040, 042, 321, 324, 516



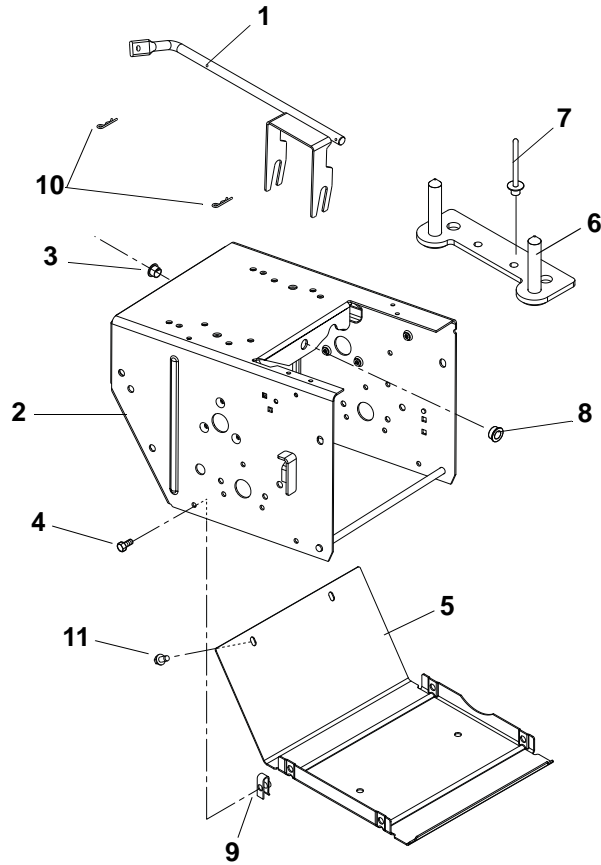
# ENGINE AND BELT DRIVE

## Model 926038, 039, 040, 042, 513, 321, 324, 516

Item	Part No.	Qty.	Description
1	06307400	3	Washer, Locking .312 x .097 (926513)
2	08200809	1	Engine, Briggs & Stratton, Polar Force 1650 Series 12V (926513)
	08200705	1	Engine, Briggs & Stratton, Polar Force 2100 Series 120V (926038, 039, 040, 042)
	08200801	1	Engine, Briggs & Stratton, Polar Force 2100 Series 240V (926321, 324)
	08200917	1	Engine, Briggs & Stratton, Polar Force 2100 Series, 12V (926516)
3	02968300	1	Belt Finger (926513)
	04334200	1	Belt Finger (926038, 039, 040, 042, 321, 324, 516)
4	05947300	2	Bolt, Hex .31-24 x .75 Grade 5
5	04600000	1	Sheave, Drive (926513)
	04346200	1	Sheave, Drive (926038, 039, 040, 321, 516)
	04503300	1	Sheave, Drive (926042, 324)
6	00657400	1	Sheave, Attachment
7	00384100	1	Belt Cover (926513)
	04083100	1	Belt Cover (926038, 039, 040, 042, 321, 324, 516)
8	52602700	1	Swing Plate Assembly
9	07200110	1	V-Belt, Drive (926513)
	07200607	1	V-Belt, Drive (926038, 039, 040, 321, 516)
	07200505	1	V-Belt, Drive (926042, 324)
10	00374900	1	Arm, Brake
11	00180500	1	Brake Pad
12	08300017	1	Spring
13	06537200	1	Nut, Locking Center Jam .38-16
14	07333500	1	Idler, Flat
15	06200111	1	Bolt, Round Head Square Short Neck .38-16 x 1.75 Grade 5
16	05947500	1	Bolt, Hex .31-18 x 1.25 Grade 5
17	52007000	1	Idler Kit
18	07400034	2	Screw, Tapping Hex Washer Head Thread Rolling .25-20 x .50
19	21550500	1	Spark Plug (926513)
	21531100	1	Spark Plug (926038, 039, 040, 042, 321, 324, 516)
20	07500114	1	Key, Push/Pull Briggs & Stratton (926513)
	07500130	1	Key, Rotary Briggs & Stratton (926038, 039, 040, 042, 321, 324)
21	00430751	1	Pivot, Brake
22	05957200	1	Bolt, Hex .31-18 x 2.00 Grade 5
23	06543100	1	Nut, Locking Top Flange .31-18
24	06308800	1	Washer, Locking .38 x .094 (926513)
	06309300	1	Washer, Locking .44 x .109 (926038, 039, 040, 042, 321, 324, 516)
25	05901307	1	Bolt, Hex .38-24 x 2.25 Grade 5 (926513)
	05964600	1	Bolt, Hex .44-20 x 2.50 Grade 5 (926038, 039, 040, 042, 321, 324, 516)
26	06437200	2	Washer, Flat Steel .344 x .688 x .065
27	06543100	1	Nut, Locking Top Flange .31-18
28	06310500	1	Washer, Locking, Internal .31 (926513)
29	06437200	2	Washer, Flat Steel .344 x .688 x .065 (926513)
	06435700	2	Washer, Flat Steel .38 x .875 x .083 (926038, 039, 040, 042, 321, 324, 516)
30	06529800	1	Nut, Locking Center .31-18 (926513)
	06529200	3	Nut, Hex .31-18 (926513)
	06528700	4	Nut, Locking Center Flange .31-18 (926038, 039, 040, 042, 321, 324, 516)
31	08300019	1	Spring
32	00380900	1	Rod, Pivot
33	06436200	1	Washer, Flat Steel .406 x .812 x .065
34	06714800	3	Pin, Hair #25
35	06800028	2	Rivet, Pop .187
36	03276651	1	Baffle (926513)
	04346051	1	Baffle (926038, 039, 040, 042, 321, 324, 516)
37	06400828	2	Washer, Flat Steel .536 x 1.07 x .109 (926513)
38	06100203	2	Screw, Machine Flat Countersink Head .31-24 x .75 EP80 (926513)
39	07400007	1	Screw, Tapping Hex Washer Head Thread Rolling .25-20 x 1.50
40	06443000	1	Washer, Flat Steel 1.062 x 2.0 x .134 (926038, 039, 040, 042, 321, 324, 516)
	04535100	1	Washer, Spacer 1.08 x 1.50 x .131 (926513)
41	03282351	1	Guard, Belt Cover (926513)
42	06435700	1	Washer, Flat Steel .38 x .875 x .083
43	07500216	1	Fuel Cap (926513)
	07500217	1	Fuel Cap (926038, 039, 040, 042, 321, 324, 516)
44	07400104	1	Screw, Tapping, Large Hex Washer Head Thread Rolling .25-20 x .50
45	05500937	2	Bushing, Sleeve (926038, 039, 040, 042, 321, 324, 516)
46	05531500	2	Bushing, Sleeve (926038, 039, 040, 042, 321, 324, 516)
47	06307400	2	Washer, Locking .312 x .097
48	07027600	1	Nut, Push .25 x .50
49	06602700	1	Key, Square .25 x .625 x .25 SAE 8630 (926042, 324, 513)
50	07400108	1	Screw, Tapping, Captive .25-20 x .50

# SPEED SELECTOR AND FRAME

Model 926038, 039, 040, 042, 513, 321, 324, 516





# SPEED SELECTOR AND FRAME

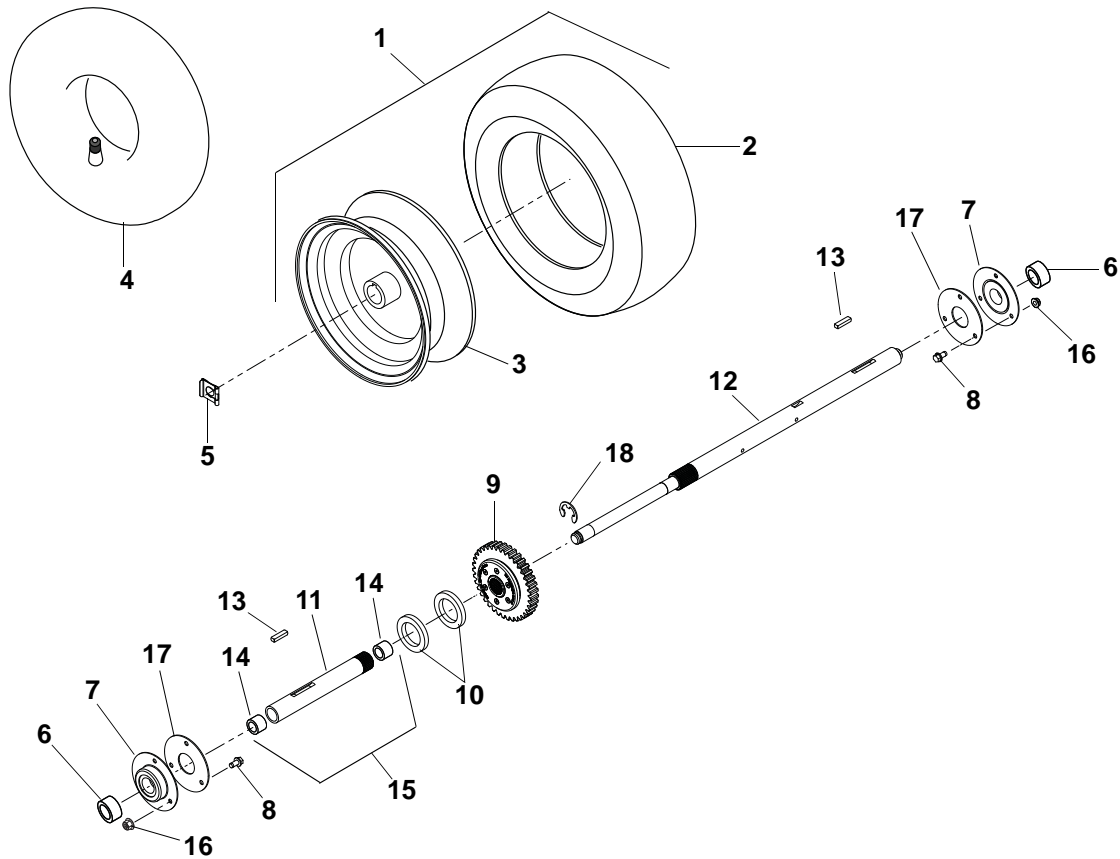
---

## Model 926038, 039, 040, 042, 513, 321, 324, 516

Item	Part No.	Qty.	Description
1	00371351	1	Shift Fork
2	04426159	1	Main Frame
3	05500026	1	Bushing, Polyliner
4	05900019	4	Bolt, Hex Washer Head .25-20 x .75 Grade 5
5	00375159	1	Bottom Cover
6	00392000	2	Strap, Engine Bolt (926513)
	04333900	2	Strap, Engine Bolt (926038, 039, 040, 042, 321, 324, 516)
7	06800028	2	Rivet, Pop .187
8	05500028	1	Bushing, Polyliner
9	07009000	4	Nut, Retainer .25-20 x .56
10	06944800	2	Clip, Spring
11	07400034	2	Screw, Tapping Hex Washer Head Thread Rolling .25-20 x .50

# WHEELS AND AXLES

Model 926038, 039, 040, 513, 321, 516



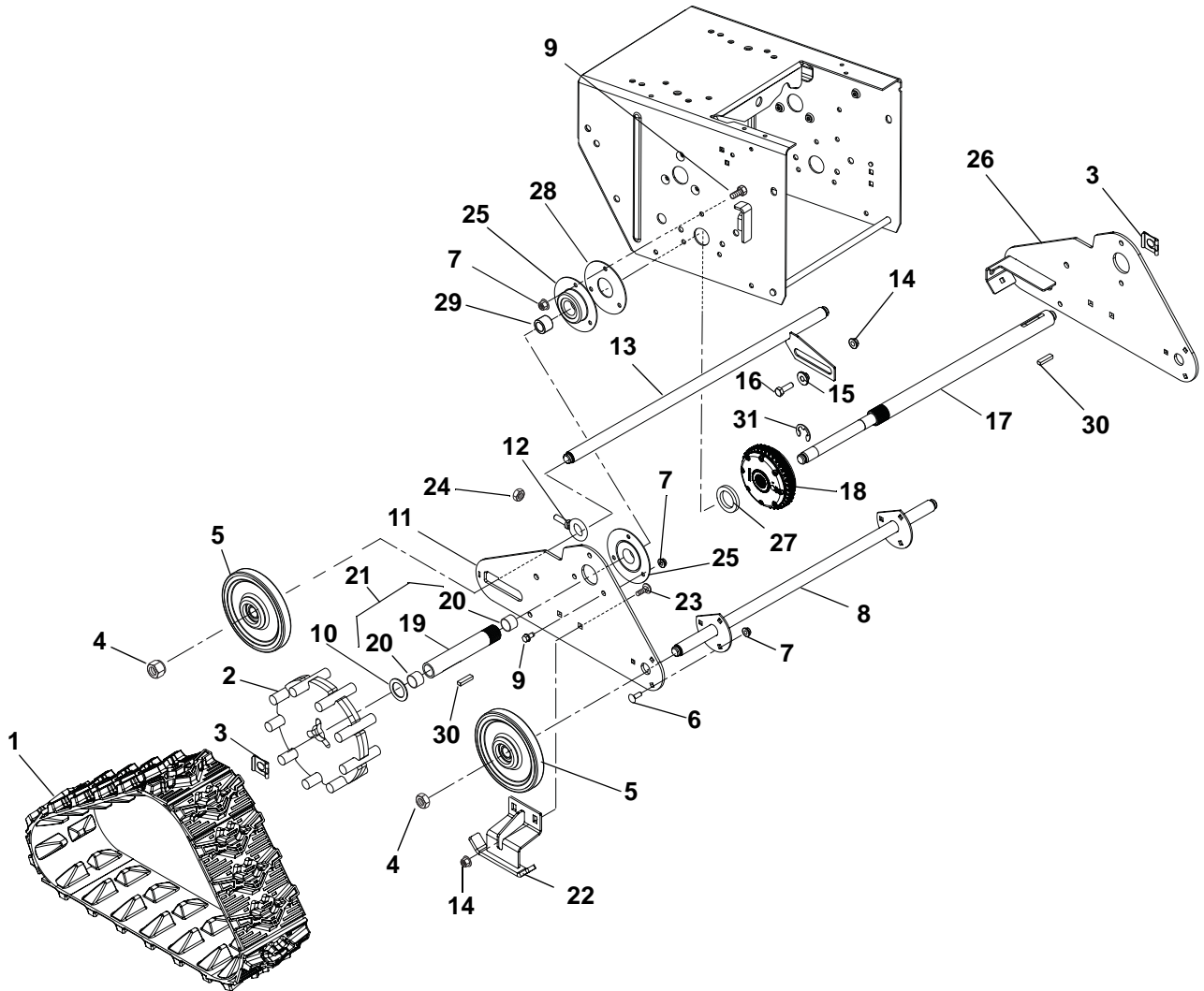
Item	Part No.	Qty.	Description
1	07100231	1	Tire/Wheel Assembly, Right Hand 16 x 6.50-8 (Includes Items 2 and 3)
	07100232	1	Tire/Wheel Assembly, Left Hand 16 x 6.50-8 (Includes Items 2 and 3)
2	07100728	2	Tire, 16 x 6.50-8 K478
3	07100103	2	Wheel/Hub, 16 x 6.50-8
4	07108700	2	Tube 16 x 6.50-8
5	05700001	2	Clip, Snap
6	05501014	2	Spacer
7	05400706	2	Bearing
8	05946800	6	Bolt, Hex .25-20 x .75
9	04584100	1	Differential Assembly
10	06443000	2	Washer, Flat Steel 1.062 x 2.0 x .134
11	00660800	1	Axle, Short (Included in Item 15)
12	00660900	1	Axle, Long
13	06600002	2	Key, Rectangular .25 x .188 x 1.00
14	05500023	2	Bushing, Sleeve (Included in Item 15)
15	52604100	AR	Axle, Short with Bushings (Includes Items 11 and 14)
16	06500710	6	Nut, Locking Center Flange .25-20
17	03389051	2	Plate, Bearing Spacer
18	05708300	1	Ring, Retaining, External .625 x .042

# NOTES

---

# TRACK AND AXLES

Model 926042, 324



# TRACK AND AXLES

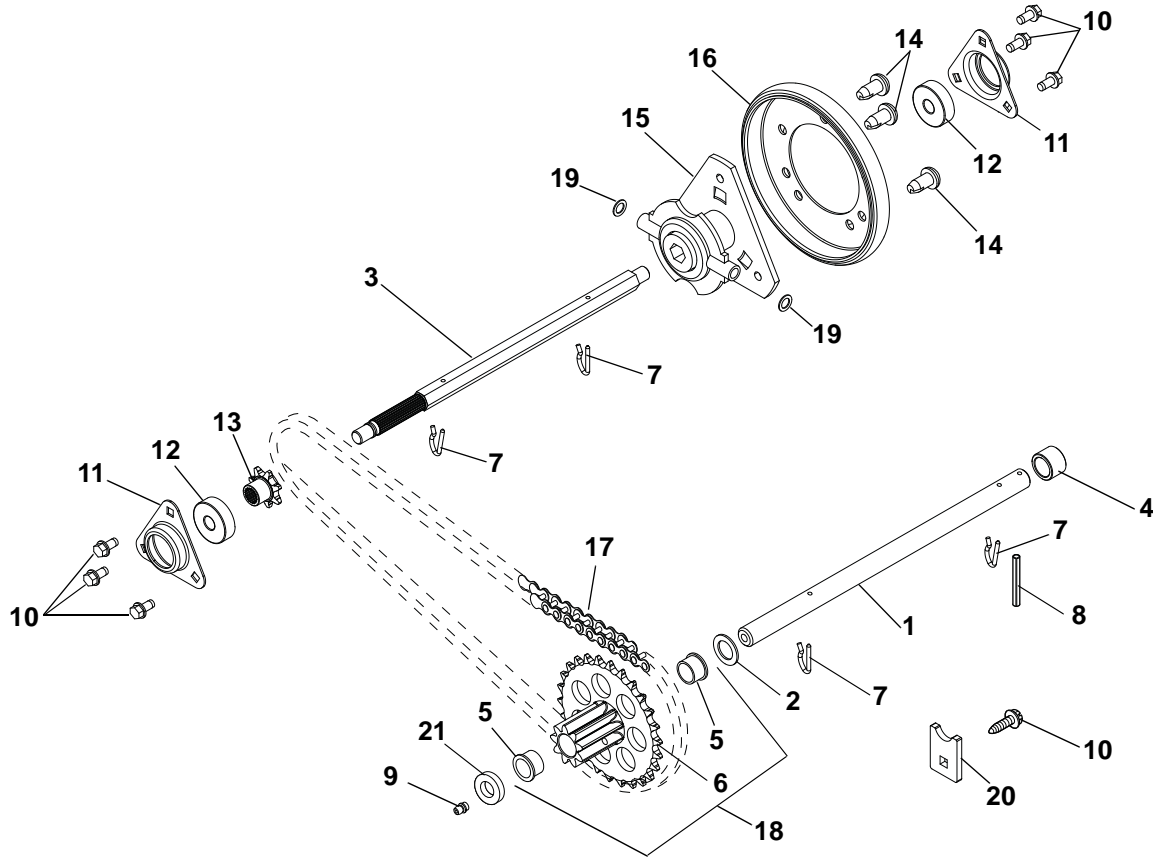
---

## Model 926042, 324

Item	Part No.	Qty.	Description
1	00669700	2	Track, Rubber
2	04520000	2	Wheel, Drive
3	05700001	2	Clip, Snap
4	06530300	4	Nut, Locking Nylon .625-18
5	03293600	4	Wheel, Bogie
6	06219900	6	Bolt, Round Head Square Neck .25-20 x .75 Grade 5
7	06500710	18	Nut, Locking Center Flange .25-20
8	03376000	1	Axle, Front
9	05946800	12	Bolt, Hex .25-20 x .75 Grade 5
10	06436300	2	Washer, Flat Steel 1.010 x 1.505 x .062
11	00669851	1	Side Plate, Right Hand
12	07000040	2	Bolt, Eye
13	03376100	1	Axle, Rear
14	06543100	5	Nut, Locking Top Flange .31-18
15	05501127	1	Flange Bushing
16	05946900	1	Bolt, Hex .31-18 x 1.00 Grade 5
17	04593100	1	Axle, Long
18	04584100	1	Differential Assembly
19	00661300	1	Axle, Short (Included in Item 21)
20	05500023	2	Bushing, Sleeve (Included in Item 21)
21	52604200	1	Axle, Short With Bushings (Includes Items 19 and 20)
22	00660751	2	Runner, Guide
23	06215700	4	Bolt, Round Head Square Neck .31-18 x .75 Grade 5
24	06534800	2	Nut, Locking Center Flange .38-16
25	05400706	4	Bearing
26	00669951	1	Side Plate, Left Hand
27	06443000	1	Washer, Flat
28	03389051	2	Plate, Bearing Spacer
29	05500122	2	Bushing, Sleeve
30	06600002	2	Key, Rectangular .25 x .188 x 1.00
31	05708300	1	Ring, Retaining, External .625 x .042

# REDUCTION DRIVE

Model 926038, 039, 040, 042, 513, 321, 324, 516



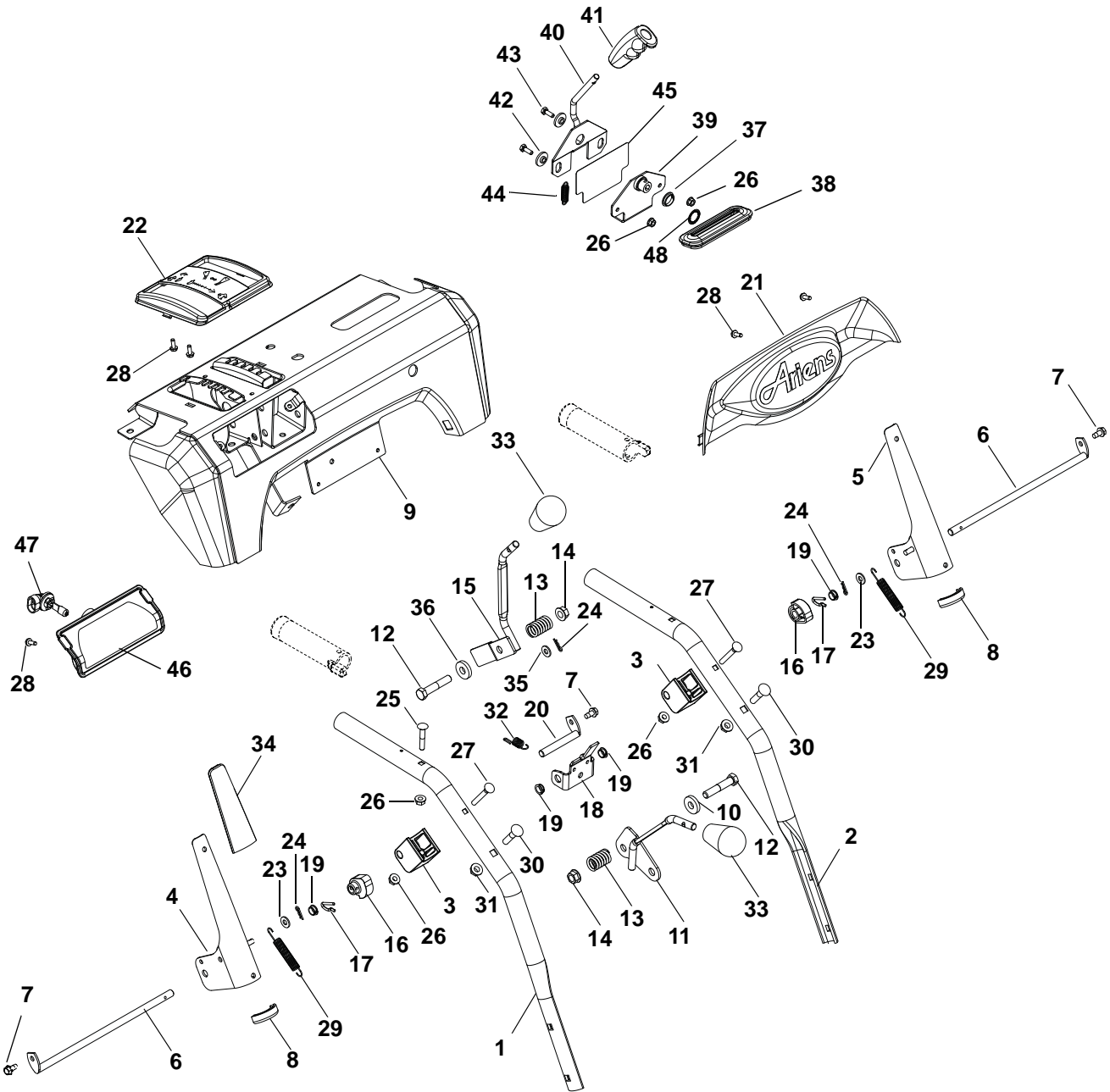
Item	Part No.	Qty.	Description
1	04511800	1	Shaft, Pinion
2	06436100	1	Washer, Flat Steel .630 x 1.005 x .062
3	04511700	1	Shaft, Hex
4	05500029	1	Spacer
5	05500111	2	Bushing, Flange (Included in Item 18)
6	00190600	1	Sprocket/Gear (Included in Item 18)
7	06714500	4	Pin, Spring Clip
8	05800205	1	Pin, Groove Type E .125 x 1.00
9	07061300	1	Zerk, Fitting .25 x .125 Drive-In
10	07400034	7	Screw, Tapping Hex Washer Head Thread Rolling .25-20 x .50
11	00383000	2	Flange, Bearing
12	05435200	2	Bearing
13	04092600	1	Sprocket, Pinion
14	07400009	3	Screw, Tapping Serrated Round Head Torx .31-18 x .50
15	00383100	1	Carrier, Friction Disc
16	00170800	1	Friction Disc
17	02466200	1	Roller Chain
18	52601500	1	Sprocket/ Gear with Bushings (Includes Items 5 and 6)
19	06439200	2	Washer, Flat Steel .505 x 1.00 x .062
20	00503500	1	Tab, Anti-Rotation
21	05500035	1	Bushing, Sleeve

# NOTES

---

# HANDLEBARS, LEVER CONTROLS, PANEL AND DASH

Model 926038, 039, 040, 042, 513, 321, 324, 516





# HANDLEBARS, LEVER CONTROLS, PANEL AND DASH

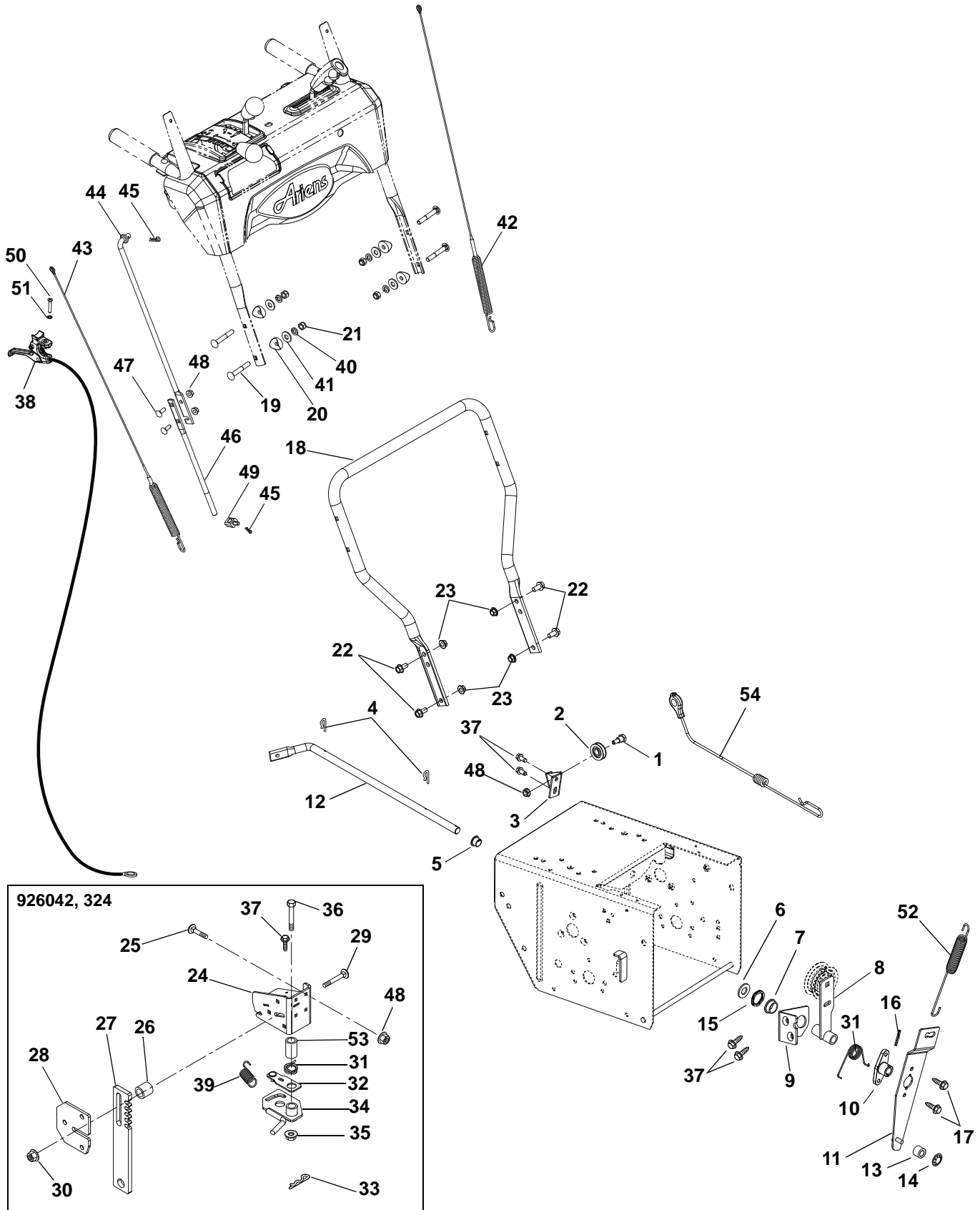
---

## Model 926038, 039, 040, 042, 513, 321, 324, 516

Item	Part No.	Qty.	Description
1	52610200	1	Handlebar, Upper, Right Hand with Heated Hand Grip (Includes Item 12 and 14 on page 26)
2	52610300	1	Handlebar, Upper, Left Hand with Heated Hand Grip (Includes Item 12 and 14 on page 26)
3	04310100	2	Clutch Paddle Block
4	04310551	1	Clutch Handle, Right Hand
5	04310451	1	Clutch Handle, Left Hand
6	04320600	2	Rod, Paddle Mount
7	07400034	3	Screw, Tapping Hex Washer Head Thread Rolling .25-20 x .50
8	07500103	2	Edging, Clutch Handle
9	52612400	1	Control Panel with Decal (926513, 516)
	52614500	1	Control Panel with Decal (926038, 039, 040, 321)
	52612600	1	Control Panel with Decal (926042, 324)
10	06444000	1	Washer, Flat Steel .406 x 1.00 x .188
11	04320200	1	Lever, Shift
12	05963300	2	Bolt, Hex .38-16 x 2.00
13	08335700	2	Spring
14	06542000	2	Nut, Locking Top Flange .38-16
15	04320300	1	Lever, Deflector
16	04322100	2	Cam, Interlock
17	06714500	2	Pin, Spring Clip
18	04320400	1	Interlock Arm
19	05500020	4	Bushing, Polyliner
20	04320500	1	Rod, Pivot
21	04304400	1	Dash Bezel
22	04323300	1	Shift Bezel
23	06437300	2	Washer, Flat Steel .281 x .62 x .065
24	06701900	3	Pin, Hair, Internal .06 x .18 x .77
25	06220100	1	Bolt, Round Head Extra Long Square Neck .25-20 x 1.25 (926042, 324)
	06220100	2	Bolt, Round Head Extra Long Square Neck .25-20 x 1.25 (926038, 039, 040, 513, 321, 516)
26	06500710	5	Nut, Locking Center Flange .25-20 (926042, 324)
	06500710	6	Nut, Locking Center Flange .25-20 (926038, 039, 040, 513, 321, 516)
27	06209300	2	Bolt, Round Head Extra Long Square Neck .25-20 x 2.00
28	07400107	6	Screw, Tapping Hex Head Boss #10 x .50
29	08300527	2	Spring
30	06212100	2	Bolt, Round Head Square Neck .31-18 x 1.50
31	06543100	2	Nut, Locking Top Flange .31-18
32	08337000	1	Spring
33	07500209	2	Knob
34	07500211	2	Sleeve, Clutch Handle
35	05501012	1	Bushing, Sleeve
36	06439300	1	Washer, Flat Steel .380 x 1.50 x .062
37	05500027	1	Bushing, Polyliner
38	04318600	1	Grommet
39	00184800	1	Mount, Chute Control
40	04321800	1	Lever, Chute Control
41	07500205	1	Control Handle
42	05500004	2	Bushing, Flange
43	05946800	2	Bolt, Hex .25-20 x .75
44	08310900	1	Spring
45	04532300	1	Tape, Quickturn
46	04307600	1	Headlight Assembly
47	00432600	1	Bulb, Light
48	07000036	1	Nut, Push -.75

# HANDLEBARS, CABLES AND CONTROLS

Model 926038, 039, 040, 042, 513, 321, 324, 516



# HANDLEBARS, CABLES AND CONTROLS

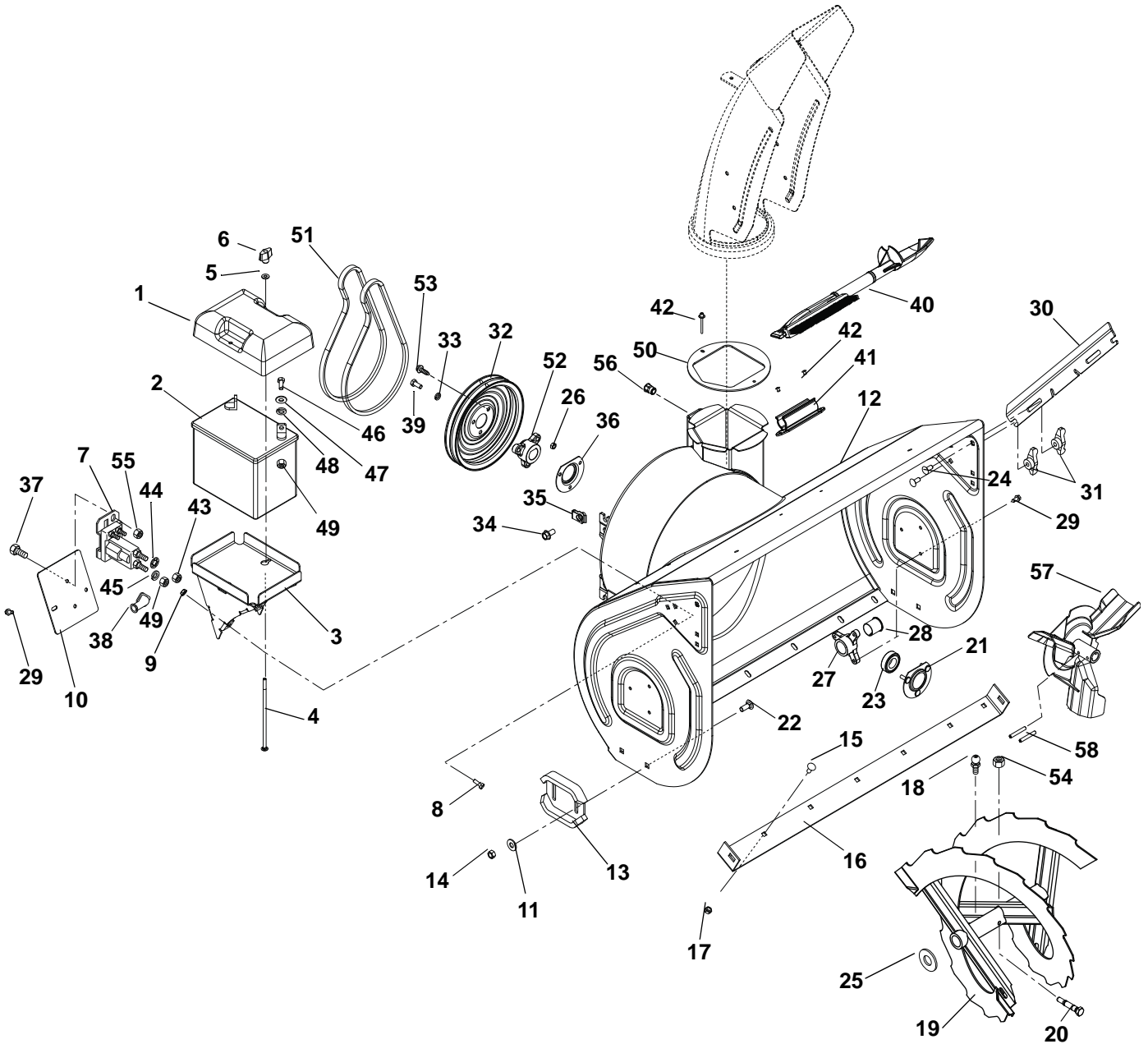
---

## Model 926038, 039, 040, 042, 513, 321, 324, 516

1	07000021	1	Bolt, Shoulder
2	07300012	1	Pulley, Cable
3	00373051	1	Bracket, Cable Pulley
4	06944800	2	Clip, Spring
5	05500026	1	Bushing, Polyliner
6	06441900	1	Washer, Flat Steel .531 x 1.06 x .095
7	05501119	1	Bushing, Flange
8	00371651	1	Arm, Idler – Traction
9	04511651	1	Bracket, Support
10	00384200	1	Hub, Brake Arm
11	02954400	1	Arm, Idler – Attachment
12	00384351	1	Arm, Attachment
13	05500037	1	Bushing, Sleeve
14	05717600	1	Ring, Retaining External .250 x .010
15	08300534	1	Wave Washer
16	05800900	1	Pin, Roll .125 x 1.00
17	07414200	2	Screw, Tapping Hex Washer Head Thread Rolling .25-20 x .75
18	00373251	1	Handlebar, Lower
19	06221600	4	Bolt, Round Head Square Neck .31-18 x 2.25
20	07500005	4	Spacer, Handlebar
21	06530200	4	Nut, Locking Nylon .31-18
22	07028500	4	Bolt, Serrated Hex Flange Washer Head .38-16 x .75
23	06542000	4	Nut, Locking-Top-Flange .38-16
24	00373751	1	Bracket, Height Adjuster (926042, 324)
25	06219900	4	Bolt, Round Head Square Neck .25-20 x .75 Grade 5 (926042, 324)
26	01103100	3	Spacer (926042, 324)
27	00383851	1	Stop, Height Adjuster (926042, 324)
28	03294151	1	Plate, Height Adjuster (926042, 324)
29	06200008	3	Bolt, Round Head Square Short Neck .31-18 x 1.25 Grade 5 (926042, 324)
30	06543100	3	Nut, Locking Top Flange .31-18 (926042, 324)
31	08300015	2	Spring (926042, 324)
	08300015	1	Spring (926038, 039, 040, 513, 321, 516)
32	03376200	1	Arm, Overtravel (926042, 324)
33	06701900	1	Pin, Hair Internal .06 x .18 x .77 (926042, 324)
34	03294000	1	Lock, Height Adjuster (926042, 324)
35	06534800	1	Nut, Locking Center Flange .38-16 (926042, 324)
36	05958500	1	Bolt, Hex .38-16 x 1.75 Grade 5 (926042, 324)
37	07400034	4	Screw, Tapping Hex Washer Head Thread Rolling .25-20 x .50 (926038, 039, 040, 513, 321, 516)
	07400034	5	Screw, Tapping Hex Washer Head Thread Rolling .25-20 x .50 (926042, 324)
38	06900510	1	Cable, Track Remote (926042, 324)
39	08300103	1	Spring (926042, 324)
40	06307400	4	Washer, Locking .312 x .097
41	06435700	4	Washer, Flat Steel .38 x .875 x .083
42	06900502	1	Cable, Traction
43	06900439	1	Cable, Auger
44	04336367	1	Rod, Shift, Upper
45	06713500	2	Pin, Hair Internal .08 x .18 x 1.18
46	04343867	1	Rod, Shift, Lower
47	06219900	2	Bolt, Round Head Square Neck .25-20 x .75
48	06500710	3	Nut, Locking Center Flange .25-20 (926038, 039, 040, 513, 321, 516)
	06500710	7	Nut, Locking Center Flange .25-20 (926042, 324)
49	00386700	1	Pivot, Shift Rod
50	06100007	1	Screw, Machine, Oval Head .25-20 x 1.50 (926042, 324)
51	06305200	1	Washer, Lock Internal .25 (926042, 324)
52	08300022	1	Spring
53	05500106	1	Bushing, Sleeve (926042, 324)
54	06900503	1	Cable

# CHUTE, AUGER AND BATTERY

Model 926038, 039, 040, 042, 513, 321, 324, 516



Item	Part No.	Qty.	Description
1	04912900	1	Cover, Battery (926513, 516)
2	n/a	A/R	Battery Recommend 240 Minimum CCA at 0° F. Size U1R or U1L (926513, 516)
3	52422200	1	Battery Tray (Includes Item 9) (926513)
	52612800	1	Assy, Battery Tray w/ Clips (Includes Item 9) (926516)
4	06220400	2	Bolt, Round Head Square Neck .25-20 x 7.00 (926513, 516)
5	06437300	2	Washer, Flat Steel .281 x .62 x .065 (926513, 516)
6	07500104	2	Knob, Wing .25-20 (926513, 516)
7	03679000	1	Solenoid (926513)
8	05900019	4	Bolt, Hex Washer Head .25-20 x .75 Grade 5 (926513, 516)

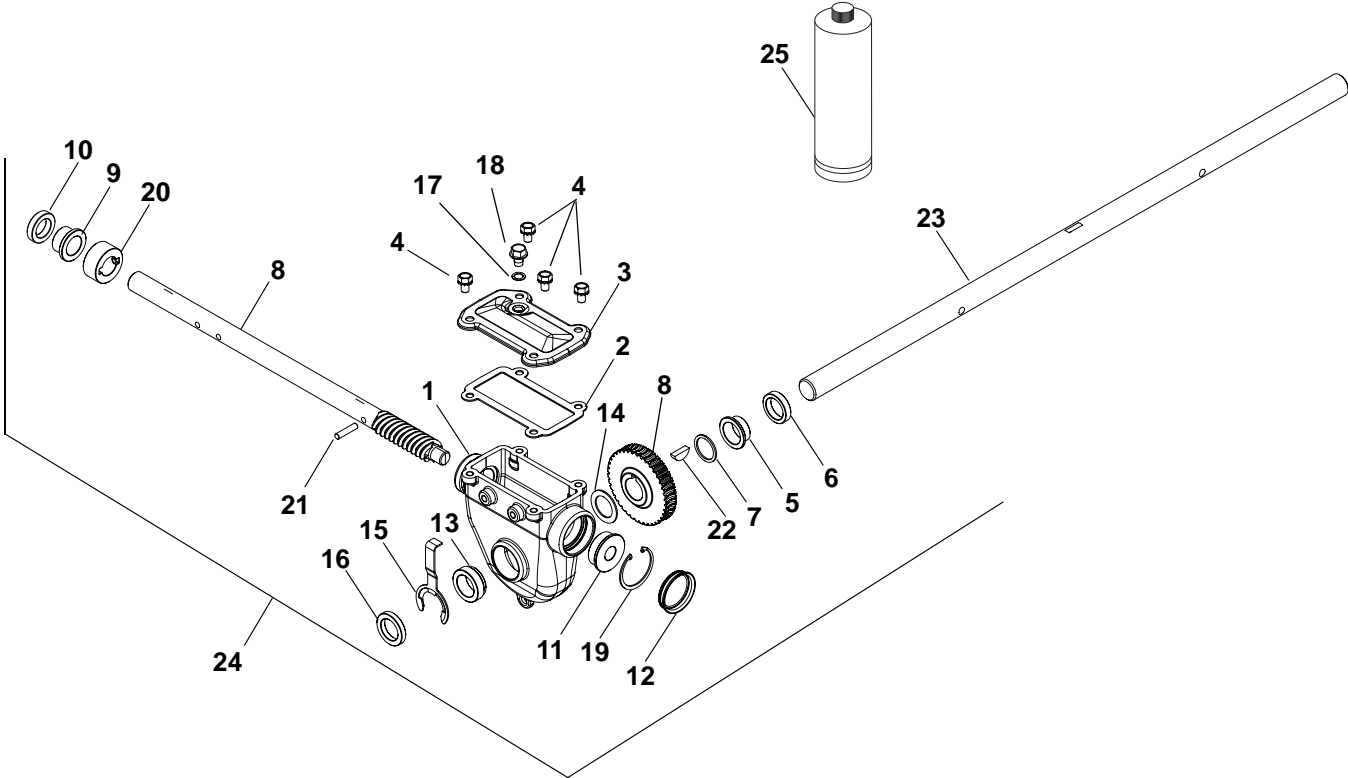
# CHUTE, AUGER AND BATTERY

## Model 926038, 039, 040, 042, 513, 321, 324, 516

9	07009000	6	Nut, Retainer .25-20 x .56 (Included in Item 3) (926513)
	07009000	4	Nut, Retainer .25-20 x .56 (926516)
10	02484459	1	Cover, Solenoid (926513)
11	06435900	4	Washer, Flat Steel .438 x 1.00 x .083
12	52607900	1	Blower Housing with Decal 28" (926038, 042, 321, 324)
	52608000	1	Blower Housing with Decal 32" (926039)
	52608100	1	Blower Housing with Decal 32" (926513, 516)
	52608200	1	Blower Housing with Decal 36" (926040)
13	04148959	2	Skid Shoe
14	06529600	4	Nut, Locking Center .38-16
15	06200209	5	Bolt, Modified Head Carraige .31-18 x .62 (926038, 042, 321, 324)
	06200209	7	Bolt, Modified Head Carraige .31-18 x .62 (926039, 040, 513, 516)
16	04182159	1	Scraper Blade 28" (926038, 042, 321, 324)
	04182059	1	Scraper Blade 32" (926039, 513, 516)
	04181659	1	Scraper Blade 36" (926040)
17	06543100	5	Nut, Locking Top Flange .31-18 (926038, 042, 321, 324)
	06543100	7	Nut, Locking Top Flange .31-18 (926039, 040, 513, 516)
18	07061300	4	Zerk, Fitting .25 x .125 Drive-In
19	52606400	1	Rake, Left Hand with Zerks, 28" (15.75" O.D.) (Includes Item 18) (926038, 042, 321, 324)
	52606500	1	Rake, Right Hand with Zerks, 28" (15.75" O.D.) (Includes Item 18) (926038, 042, 321, 324)
	52606600	1	Rake, Left Hand with Zerks, 32" (15.75" O.D.) (Includes Item 18) (926039, 513, 516)
	52606700	1	Rake, Right Hand with Zerks, 32" (15.75" O.D.) (Includes Item 18) (926039, 513, 516)
	52606800	1	Rake, Left Hand with Zerks, 36" (15.75" O.D.) (Includes Item 18) (926040)
	52606900	1	Rake, Right Hand with Zerks, 36" (15.75" O.D.) (Includes Item 18) (926040)
20	52100100	2	Shear Bolt Service Assembly (Includes Item 54)
21	00428700	1	Bearing Flange
22	06212000	4	Bolt, Round Head Square Short Neck .38-16 x 1.00
23	05400713	1	Bearing
24	06220800	4	Bolt, Round Head Square Short Neck .31-18 x .75
25	06436300	2	Washer, Flat Steel 1.01 x 1.505 x .062
26	06529700	3	Nut, Locking Center .25-20
27	00275100	2	Bushing, Rake Shaft
28	05500030	2	Bushing, Polyliner
29	07400034	6	Screw, Tapping Hex Washer Head Thread Rolling .25-20 x .50 (926038, 039, 040, 042, 321, 324, 516)
	07400034	8	Screw, Tapping Hex Washer Head Thread Rolling .25-20 x .50 (926513)
30	00262159	2	Cutter, Drift
31	07500105	4	Knob, Wing .31-18
32	00268700	1	Pulley, Attachment
33	06307400	1	Washer, Locking .312 x .097
34	07028500	2	Bolt, Serrated Hex Flange Washer Head .38-16 x .75
35	07053300	2	Nut, Retainer .38-16 x .37
36	01014200	1	Bearing Flange
37	05947900	2	Bolt, Hex .25-20 x .50 Grade 5 (926513)
38	07533200	3	Boot, Eyelet Terminal (926513, 516)
39	05947300	1	Bolt, Hex .31-24 x .75 Grade 5
40	03901400	1	Snow Clean Out Device with Brush
41	00170300	1	Mount, Snow Clean Out Device
42	06800028	4	Rivet, Pop .187
43	06536700	2	Nut, Jam .31-24 (926513)
44	06310500	2	Washer, Locking Internal .31 (926513)
45	06306800	1	Washer, Locking External .262 x .502 x .026 (926513, 516)
46	05946800	2	Bolt, Hex .25-20 x .75 Grade 5 (926513, 516)
47	06439500	2	Washer, Flat Steel .265 x .50 x .087 (926513, 516)
48	06308400	2	Washer, Locking .25 x .062 (926513, 516)
49	06533200	3	Nut, Hex .25-20 (926513, 516)
50	00600100	1	Baffle
51	07200430	1	V-Belt, Matched Set, Auger (926513)
	07200608	1	V-Belt, Matched Set, Auger (926038, 039, 040, 042, 321, 324, 516)
52	00268703	1	Pulley Hub
53	07411500	3	Screw, Tapping Hex Washer Head Thread Rolling .31-18 x .50
54	06529800	2	Nut, Locking Center .31-18
55	06529700	2	Nut, Locking Center .25-20 (926513)
56	07001612	2	Nut, Threaded Insert .38-16 (Included with item 12)
57	00485551	1	Impeller
58	05803700	2	Pin, Roll .250 x 1.75

# GEAR CASE – CAST IRON

Model 926038, 039, 040, 042, 513, 321, 324, 516



# GEAR CASE – CAST IRON

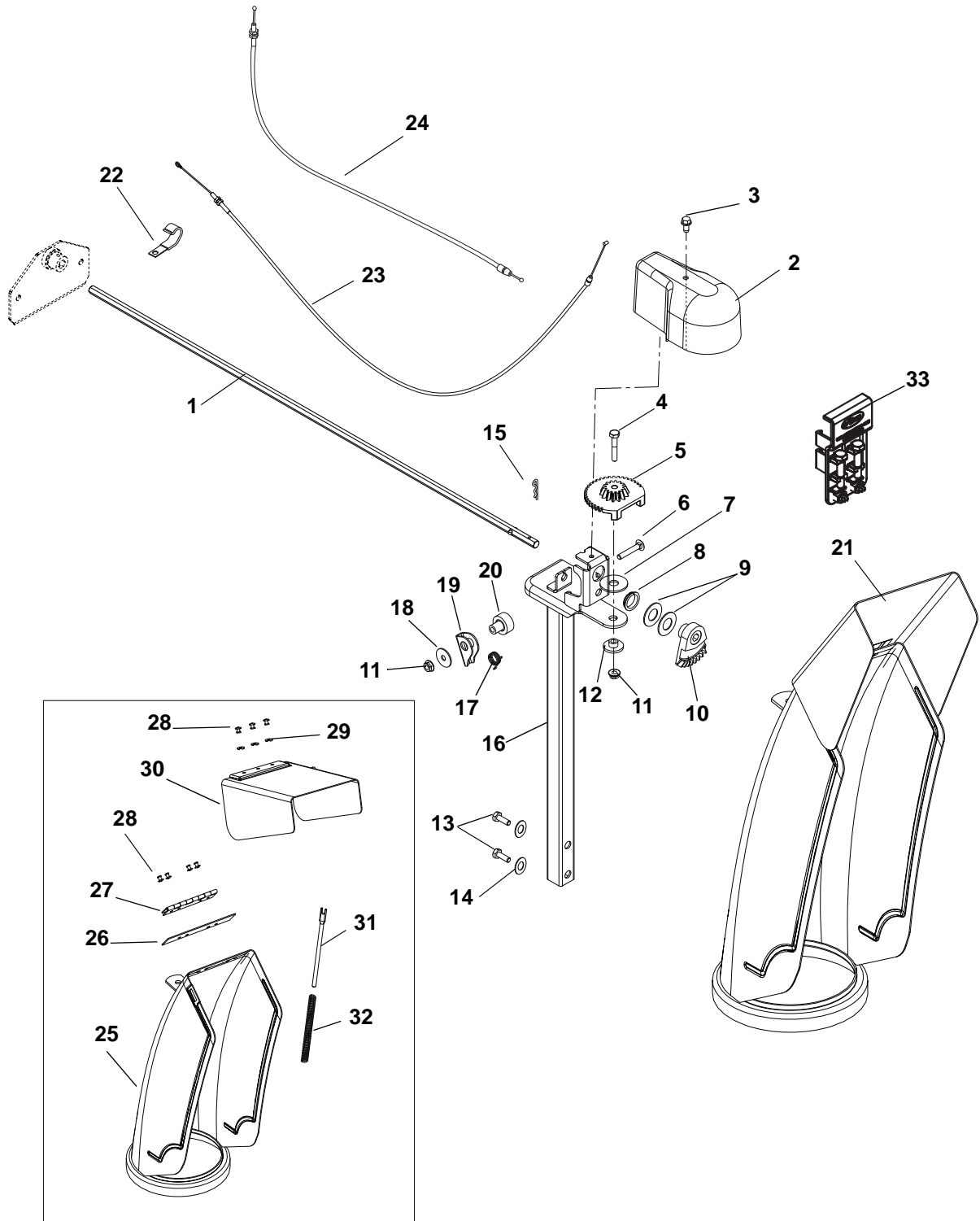
---

## Model 926038, 039, 040, 042, 513, 321, 324, 516

Item	Part No.	Qty.	Description
1	04276900	1	Gear Case
2	04282500	1	Gasket
3	04280351	1	Cover, Top
4	05901509	4	Bolt, .31-18 x .50 SEMS
5	05501025	1	Bushing, Flange
6	05600511	1	Seal, Oil
7	06436300	1	Washer, Flat Steel 1.010 x 1.505 x .062
8	52609600	1	Worm Shaft and Worm Gear Set
9	05501024	1	Bushing, Flange
10	05600512	1	Seal, Oil
11	05501027	1	Bushing, Flange
12	04302900	1	Cover, Front
13	05501033	1	Bushing, Flange
14	06400332	1	Washer, Flat Steel 1.010 x 1.250 x .068
15	04323700	1	Bushing Retainer
16	05600510	1	Seal, Oil
17	06400920	1	Washer, Seal
18	07400110	1	Screw, Tapping Hex Washer Head Rolok .38-16 x .50
19	05702100	1	Ring, Retaining, Internal 1.750 x .062
20	04277100	1	Thrust Collar
21	05800208	1	Pin, Straight .250 x 1.12 6150
22	06608800	1	Key, Woodruff .25 x .875 Hardened
23	03392400	1	Shaft, Rake, 28" (926038, 042, 321, 324)
	03392500	1	Shaft, Rake, 32" (926039, 513, 516)
	03392600	1	Shaft, Rake, 36" (926040)
24	52609700	1	Gear Case Assembly (Includes Items 1 – 23) (926038, 042, 321, 324)
	52609800	1	Gear Case Assembly (Includes Items 1 – 23) (926039, 513, 516)
	52609900	1	Gear Case Assembly (Includes Items 1 – 23) (926040)
25	00068800	1	Gear Lube, 8 oz Bottle

# DISCHARGE CHUTE

Model 926038, 039, 040, 042, 513, 321, 324, 516





# DISCHARGE CHUTE

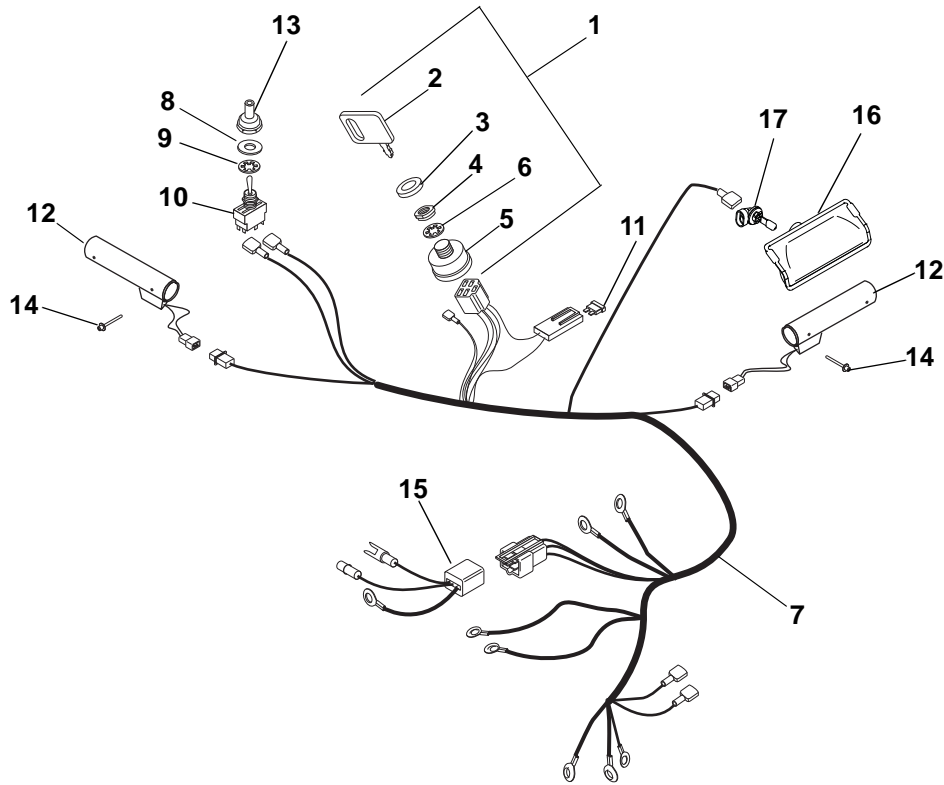
---

## Model 926038, 039, 040, 042, 513, 321, 324, 516

Item	Part No.	Qty.	Description
1	04507700	1	Rod, Chute Rotation
2	00261700	1	Cover, Chute Gear
3	07400104	1	Screw, Tapping Large Hex Washer Head Thread Rolling .25-20 x .50
4	05952500	1	Bolt, Hex .25-20 x 1.50 Grade 5
5	03898700	1	Gear, Chute, Locking
6	06222300	1	Bolt, Round Head Square Neck .25-20 x 1.50
7	06400904	1	Washer, Flat Nylon .515 x 1.375 x .093
8	05500027	1	Bushing, Polyliner
9	06441400	2	Washer, Flat Steel .754 x 1.125 x .062
10	00184300	1	Gear, Chute
11	06500710	2	Nut, Locking Center Flange .25-20
12	05500920	1	Bushing, Flange
13	05958500	2	Bolt, Hex .38-16 x 1.75 Grade 5
14	06308800	2	Washer, Locking .38 x .094
15	06713500	1	Pin, Hair
16	03897451	1	Pedestal, Chute
17	08300014	1	Spring
18	06426600	1	Washer, Flat Steel .281 x 1.00 x .063
19	00180900	1	Arm, Locking
20	05500024	1	Bushing, Lock Arm
21	52610500	1	Chute, Discharge w/Cap and Decal (Includes Items 25 through 30)
22	06909400	1	J-Clamp
23	06900406	1	Cable, Deflector
24	06900421	1	Cable, Chute Lock
25	04346859	1	Chute, Discharge
26	00628400	1	Seal
27	00170100	1	Hinge
28	06800028	7	Rivet
29	06400003	3	Washer
30	52611000	1	Cap, Deflector w/Decal
31	00389000	1	Rod, Deflector Cap
32	08300013	1	Spring
33	52104700	1	Holder, Spare Shear Bolts

# ELECTRICAL

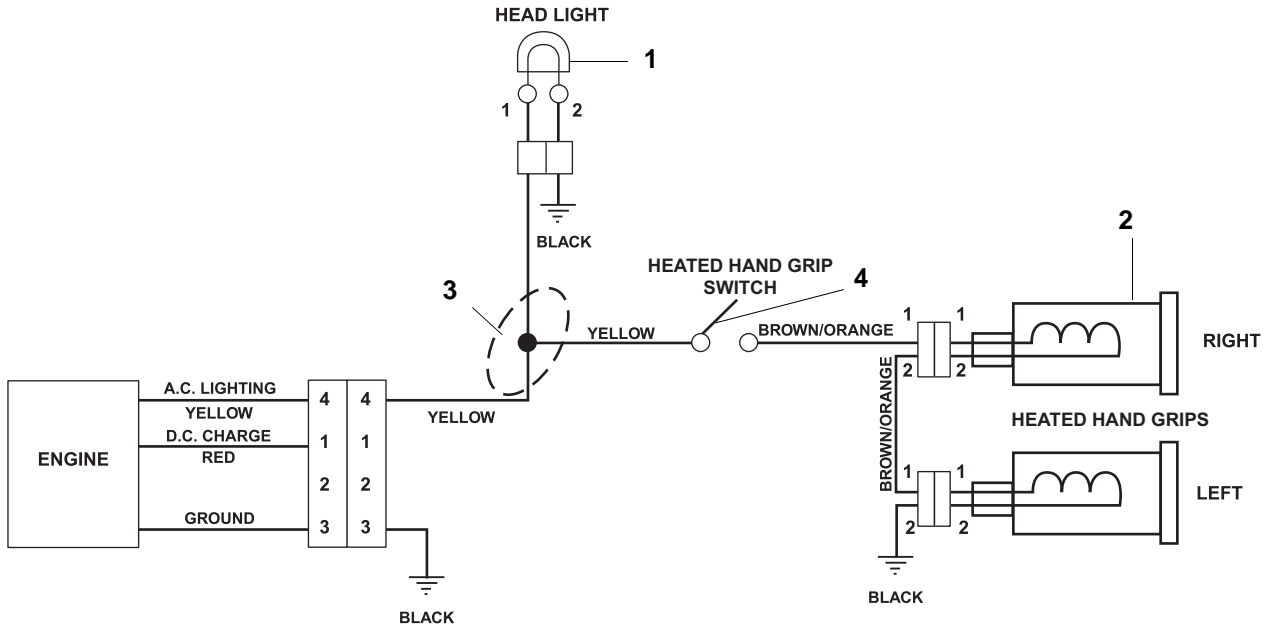
**Model 926038, 039, 040, 042, 513, 321, 324, 516**



Item	Part No.	Qty.	Description
1	52709300	1	Switch Assembly (Includes Items 2 – 6) (926513, 516)
2	02460700	1	Key with Cap (926513, 516)
3	07517700	1	Cap, Ignition Switch (926513, 516)
4	06517300	1	Nut, Panel .625-32 (926513, 516)
5	02739600	1	Ignition Switch Assembly (926513, 516)
6	06306900	1	Washer, Locking Internal .625 x .045 (926513, 516)
7	04329600	1	Harness, Wire – Light and Heated Hand Grips (926038, 039, 040, 042, 321, 324)
	04329700	1	Harness, Wire – 12V, Light and Heated Hand Grips (926513)
	04682900	1	Harness, Wire – 12V, Light and Heated Hand Grips (926516)
8	06403800	1	Washer, Flat Steel .505 x .875 x .024
9	06310900	1	Washer, Locking Internal .563 x .040
10	02485700	1	Switch, On/Off – Heated Hand Grips
11	00524700	1	15 AMP Fuse (926513, 516)
12	07500015	2	Heated Hand Grip with Terminal (Recommend Loctite E90-FL Epoxy for Installation)
13	09207600	AR	Boot, Switch (Optional)
14	06800038	4	Rivet, Pop #43 .125 x .313
15	00388300	1	Harness, Adapter (926513)
	04683000	1	Harness, Adapter (926516)
16	04307600	1	Headlight Assembly
17	00432600	1	Bulb, Light

# CONTINUITY AND WIRING DIAGRAMS

Model 926038, 039, 040, 042, 321, 324

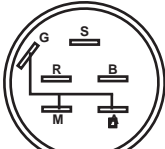
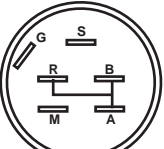
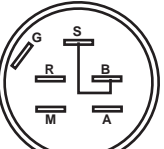
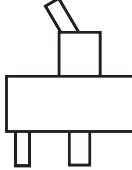
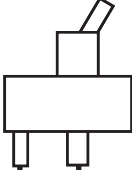

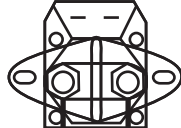


Item	Part No.	Qty.	Description
1	04307600	1	Headlight Assembly
2	07500015	2	Heated Hand Grip with Terminal (Recommend Loctite E90-FL Epoxy for Installation)
3	04329600	1	Harness, Wire, Light and Heated Hand Grips
4	02485700	1	Switch, On/Off Heated Hand Grips

# CONTINUITY DIAGRAM

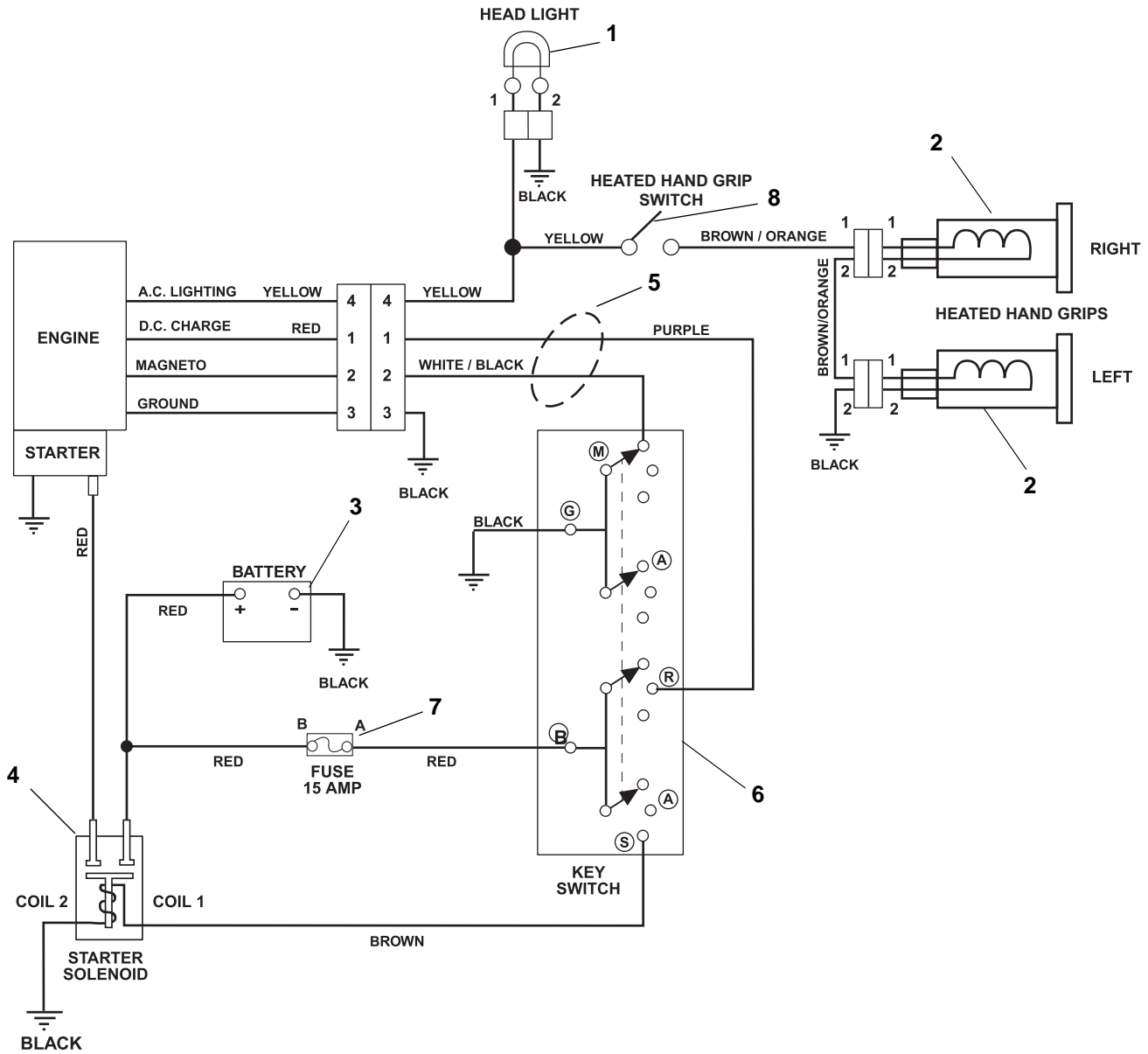
## Model 926038, 039, 040, 042, 513, 321, 324, 516

The diagrams below show the various states of connection for electrical components.  
 The solid lines on switches show continuity.  
**NOTE:** All switches are viewed from the rear.

<p><b>Key Switch (926513, 516)</b> (02739600)</p> <div style="display: flex; justify-content: space-around; align-items: center;">    </div> <div style="display: flex; justify-content: space-around; margin-top: 10px;"> <span>OFF</span> <span>RUN</span> <span>START</span> </div>	<p><b>Heated Hand Grip Switch</b> (02485700)</p> <div style="display: flex; justify-content: space-around; align-items: center;">   </div> <div style="display: flex; justify-content: space-around; margin-top: 10px;"> <span>HEATED HAND GRIPS OFF</span> <span>HEATED HAND GRIPS ON</span> </div>
<p><b>Solenoid (926513) (Top View)</b> (03679000)</p> <div style="display: flex; justify-content: space-around; align-items: center;">   </div> <div style="display: flex; justify-content: space-around; margin-top: 10px;"> <span>NOT ENERGIZED</span> <span>ENERGIZED</span> </div>	

# WIRING DIAGRAM

Model 926513, 516



Item	Part No.	Qty.	Description
1	04307600	1	Head Light Assembly
2	07500015	2	Heated Hand Grip with Terminal (Recommend Loctite E90-FL Epoxy for Installation)
3	N/A	AR	Battery (Recommend 240 Minimum CCA at 0° F. Size U1R or U1L)
4	03679000	1	Solenoid (926513)
5	04329700	1	Harness, Wire-12V, Light and Heated Hand Grips (926513)
	04682900	1	Harness, Wire-12V, Light and Heated Hand Grips (926516)
6	52709300	1	Switch Assembly
7	00524700	1	15 AMP Fuse
8	02485700	1	Switch, On/Off Heated Hand Grips



655 West Ryan Street  
Brillion, WI 54110  
920-756-4688  
Fax 920-756-2407  
[www.ariens.com](http://www.ariens.com)

An *Ariens* Company Brand