

SC505

Product Features

- 1 Hole Installation
- 2.2 GPM @ 60PSI Max Flow Rate
- Brass body
- ½" 14 NPS Inlet
- Ceramic cartridge
- Metal lever handle

Standards/Approvals

- SC505 meets or exceeds:
- ANSI/ASME A112.18.1
- ANSI/NSF 61 – Sec 9
- IAPMO/UPC (AB1953)

ANSI / NSF 61-9

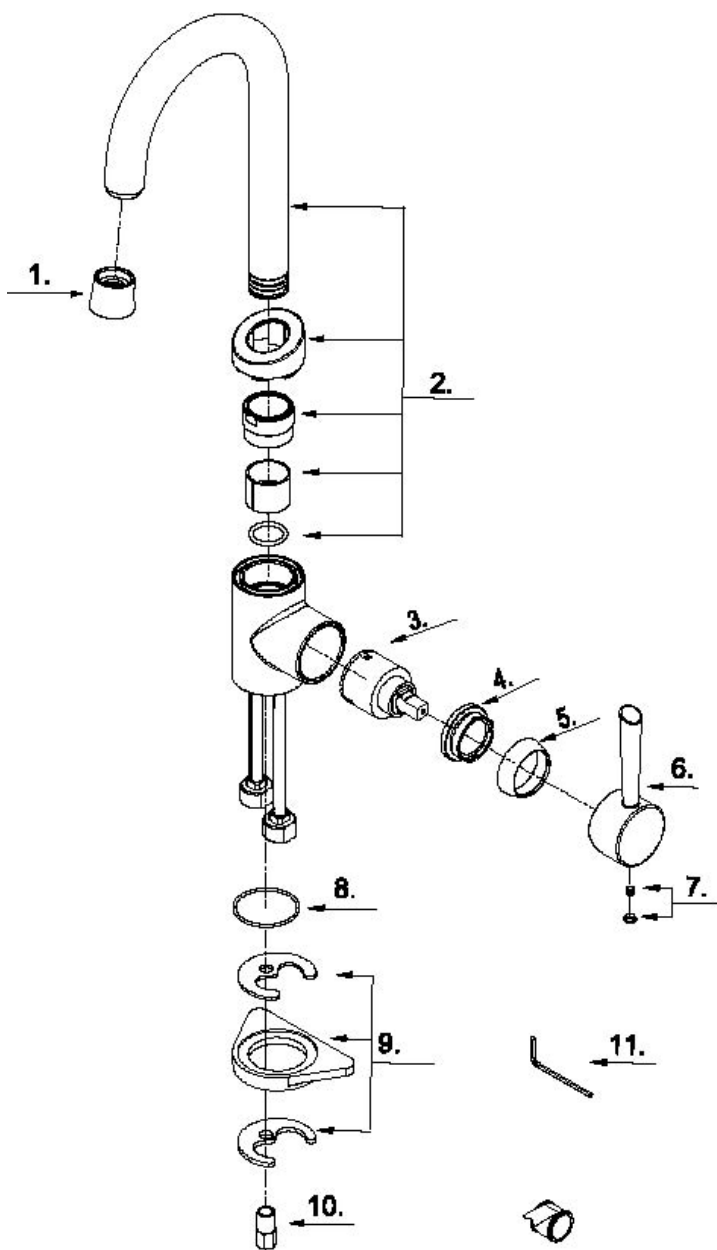


California Lead Plumbing Law

PRODUCT SPECIFICATION:

Single handle bar faucet shall have a brass body, ceramic cartridge, open spout and metal lever handle. Product shall be schön brass works model SC505.

PARTS BREAKDOWN



PARTS LISTING

No	Part Name	Part Number	Q'ty
1	Aerator	A500087Nxx	1
2	Spout Assembly	A666270Nxx	1
3	Ceramic Disc Cartridge	A507348N-32	1
4	Locking Nut	A104002	1
5	Trim Cap	A103205xx	1
6	Metal Handle	A069900xx	1
7	Handle Cap	A66D558	1
8	O-Ring(Φ 1-1/2" ID * Φ 1-5/8" OD)	A004057N	1
9	Mounting Hardware	A66D095	1
10	Lock Nut	A070135	1
11	Hex Wrench(H2.5 * 19 mm L * 53 mm)	A031000	1

XX designates finish matched parts