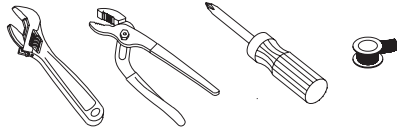


installation

For Models: N130 01, N130 02

Tools

- Adjustable wrench
- Groove joint plier
- Phillips screwdriver
- Pipe tape



Maintenance

Your new faucet is designed for years of trouble-free performance.

Keep it looking new by cleaning it periodically with a soft cloth.

Avoid abrasive cleaners, steel wool and harsh chemicals as these will dull the finish and void your warranty.

Safety Tips

- If you use soldering for the installation of the faucet, the seats, cartridges and washers will have to be removed before using flame. Otherwise, warranty will be void on these parts.
- Protect your eyes with safety glasses when cutting or soldering water supply line.
- Cover your drain to avoid losing parts.

Important points

Prior to beginning installation, turn off the cold and hot water lines and open the old faucet to release built-up pressure. When installing your new faucet, turn the connector nuts finger-tight, then use one wrench to anchor the fitting and a second wrench to tighten the nut an additional turn. Connections that are too tight will reduce the integrity of the system. Wrap all threaded connections with Teflon tape available at your local hardware or plumbing supply store. Always wrap in a clockwise direction.

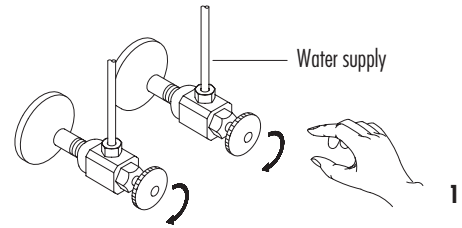
Things You May Need

All installations can vary depending on how your previous faucet was installed. Necessary supplies to install your faucet are not all included; however, they are available wherever plumbing supplies are sold. When choosing your installation supplies, make sure they are IAPMO and/or CSA approved products.

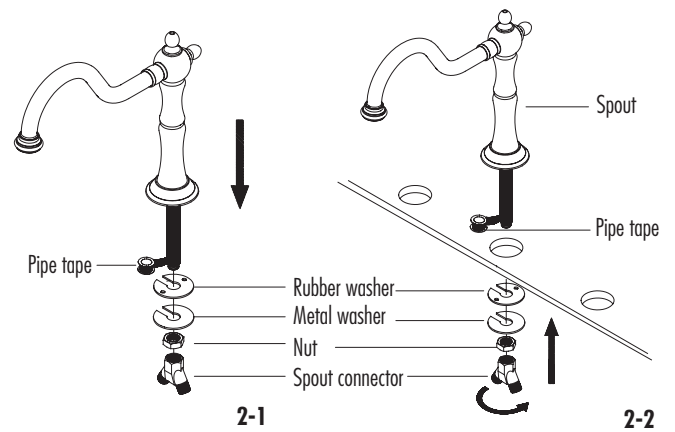


Preparation/Assembly

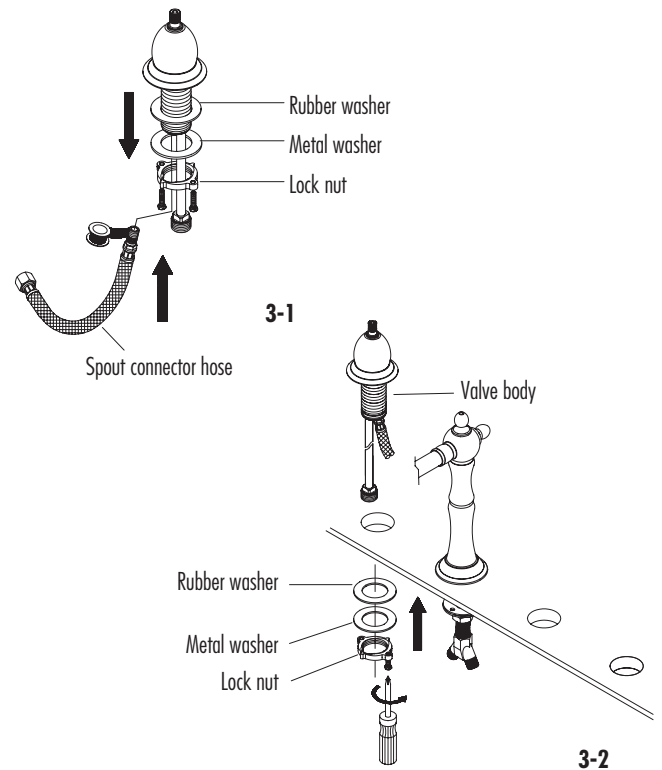
1 Shut off water supply before installation.



2 Remove rubber washer, metal washer, lock nut and spout connector from the spout shank. Position the spout in the faucet hole of the sink. Slide the rubber and metal washers up the shank and secure spout with the lock nut. Wrap end of mounting shank with pipe tape and reattach spout connector. Do not overtighten.



3 Remove lock nut, rubber washer and metal washer from hot valve body. Wrap male threaded end of flexible spout connector hose, and install in bottom of valve body. Insert valve body through the correct faucet hole, replace rubber and metal washers, and secure with lock nut.

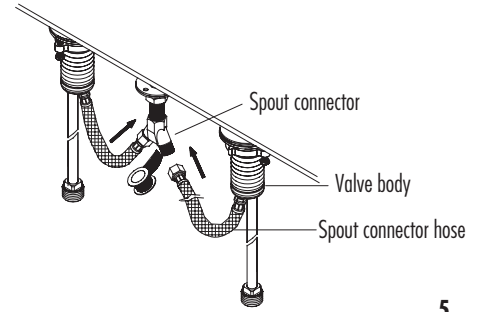


4 Repeat step 3 for cold valve.

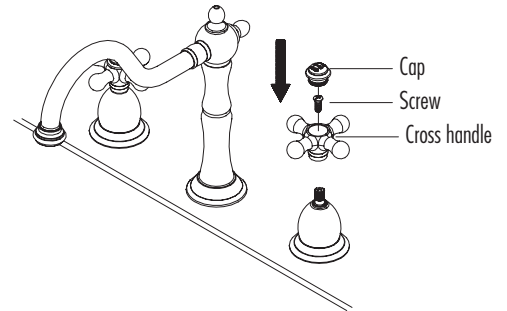
Steps 1-4

Installation

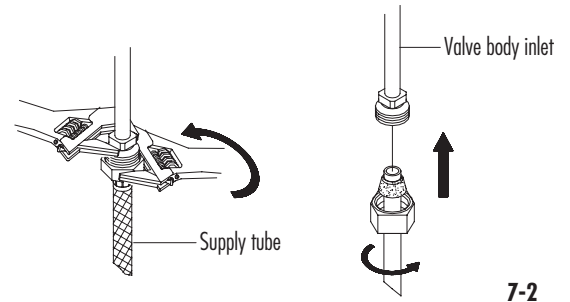
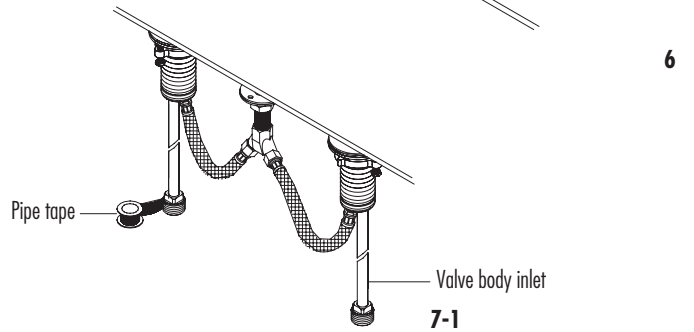
5 Wrap spout connector inlets with pipe tape, and connect to valve bodies with flexible spout connector hoses.



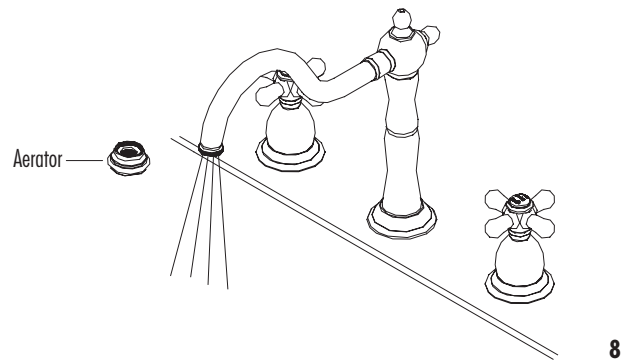
6 Install handles.



7 Wrap valve body inlets with pipe tape and connect to water supply.

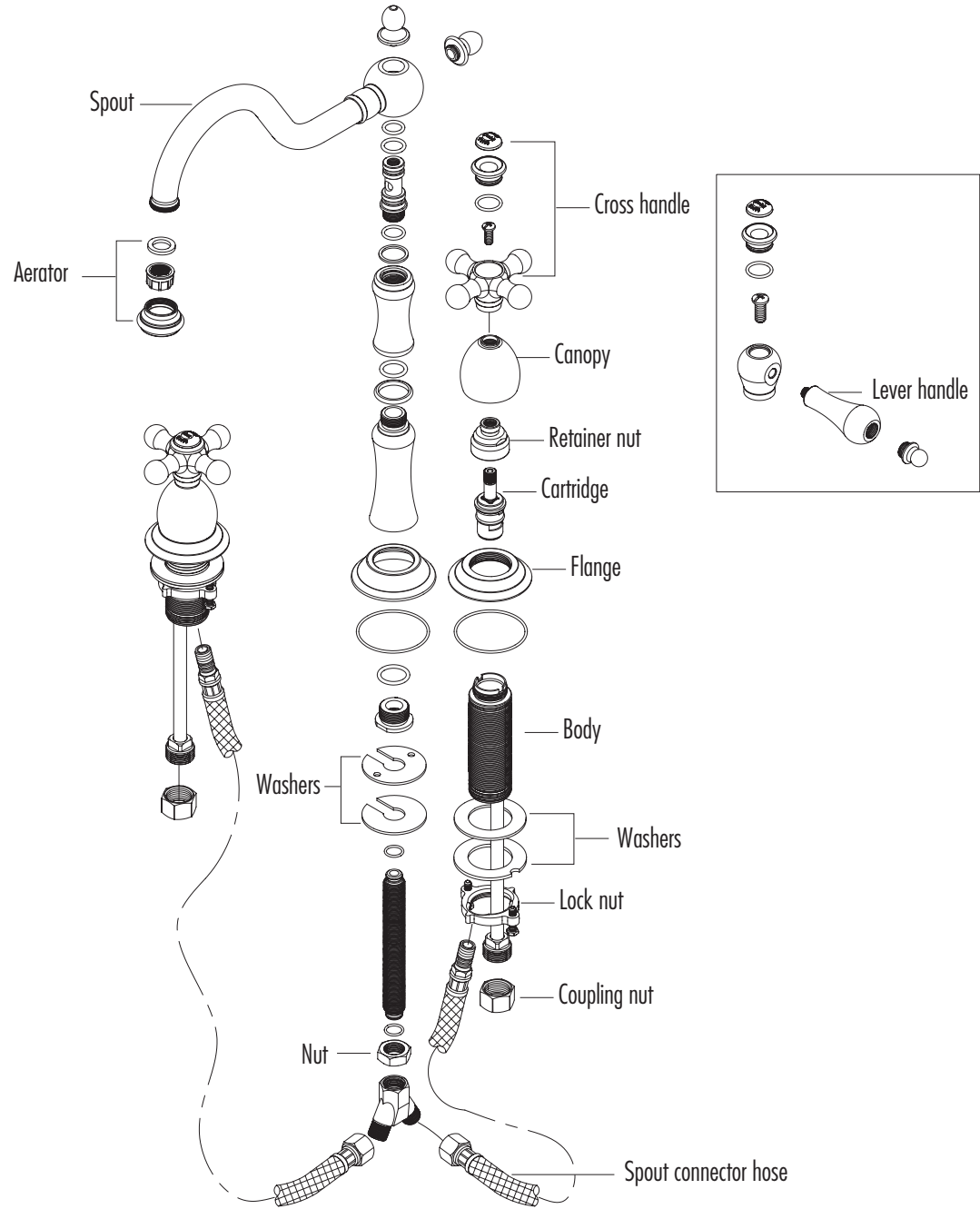


8 After attaching supply lines, remove aerator and turn on hot and cold water for 1 minute to flush the lines. Replace aerator. Check for leaks.



Steps 5-8

Parts Breakdown



Trouble-Shooting

PROBLEM

Leaks underneath handle.

CAUSE

Retainer nut is loose or O-ring on cartridge is dirty or twisted.

SOLUTION

Tighten the retainer nut. Clean or replace o-ring.

PROBLEM

Aerator leaks or has an inconsistent water flow pattern.

CAUSE

Aerator is dirty or improperly installed.

SOLUTION

Remove aerator, check for debris in the aerator screens, and confirm the rubber washer is properly installed.