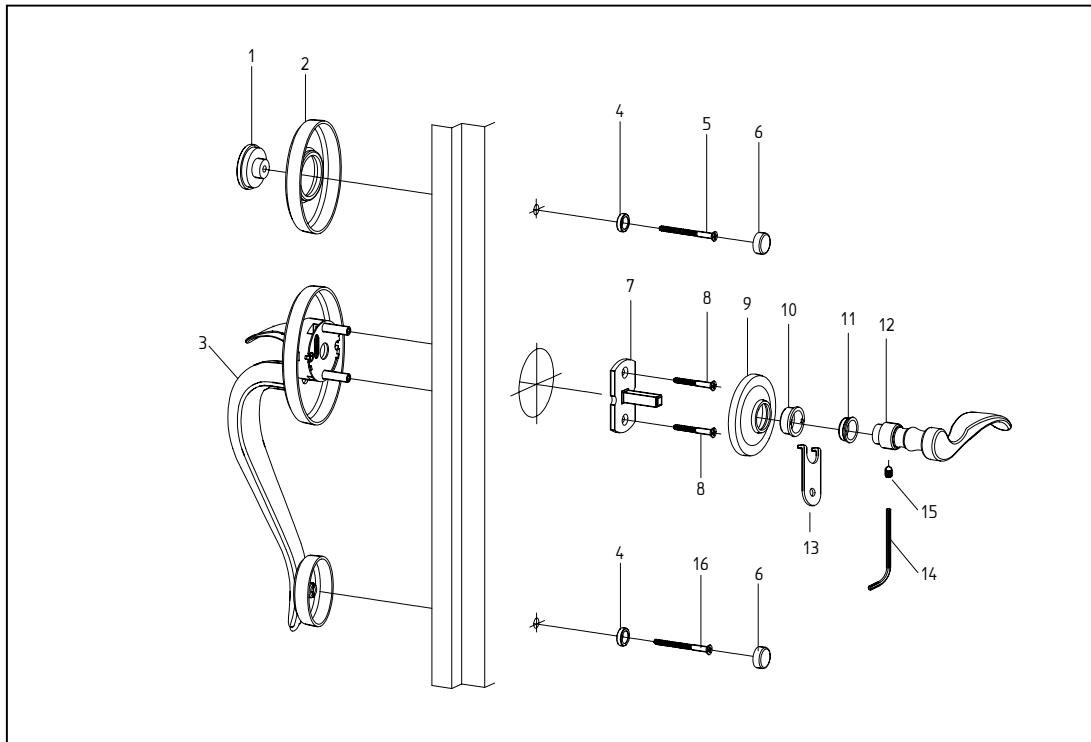




DUMMY CYLINDER ENTRANCE SET

Installation Instructions



Parts Enclosed:

- | | |
|--|-------------------------------------|
| 1. (1) Dummy Cylinder | 9. (1) Rosette |
| 2. (1) Outside Cylinder Collar | 10. (1) Trim Nut |
| 3. (1) Outside Grip Handle Assembly | 11. (1) Trim Nut Bushing |
| 4. (2) Screw Cap Washer | 12. (1) Lever / Knob |
| 5. (3) 1/4"-20 Flat Head Screw ; 2 1/4" ; 2 1/2" ; 2 3/4" length | 13. (1) Trim Nut Key |
| 6. (2) Screw Cap | 14. (1) Allen Wrench |
| 7. (1) Dummy Mounting bracket | 15. (1) Set Screw |
| 8. (2) 8-32 1 1/2" Flat Head Screw | 16. (1) 8-32 1 7/8" Flat Head Screw |

- A. Prepare door as per enclosed dummy marking template. Mark hole for lower pull assembly for the appropriate entrance set design.
- B. Bore 2 1/8" (54mm) hole from both sides of door. Drill 5/16" hole for dummy cylinder [1] and for lower grip handle assembly [3].
- C. Insert dummy cylinder [1] through outside cylinder collar [2] and into door. Secure it inserting 1/4"-20 flat head screw [5] through screw cap washer [4] and screw into dummy cylinder [1]. **Attention:** There are **three** different length 1/4"-20 flat head screws [5] enclosed. Use them according to the door thickness as shown below.

	1 3/4" door thickness	2" door thickness	2 1/4" door thickness
1/4"-20 flat head screw length	2 1/4"	2 1/2"	2 3/4"

- D. Place outside grip handle assembly [3] against door. Attach dummy mounting bracket [7] with two 8-32 1 1/2" flat head screws [8].
- E. To secure bottom of pull, insert 8-32 1 7/8" flat head screw [16] through screw cap washer [4] and screw into bottom of outside handle.
- F. Place rosette [9] over dummy mounting bracket [7]. Place trim nut [10] through rosette and screw into mounting bracket. Secure with trim nut key [13].
- G. Snap nylon trim nut bushing [11] into trim nut [10].
- H. Place lever or knob [12] over threaded spindle and secure with set screw [15] using provided allen wrench [14].
- I. Attach screw covers [6].