



A Division of Troy-CSL Lighting, Inc.

# 3.6 Series Trims

Project \_\_\_\_\_

Fixture Type \_\_\_\_\_

## Low Voltage Recess Lighting

### Catalog Number

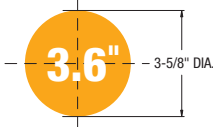
- 9775BK Black / Clear Reflector
- 9775BN Br. Nickel / Clear
- 9775 White / Clear Reflector
- 9776 White / Champagne Reflector
- 9777 Bronze / Clear Reflector
- 9778 White / Black Reflector
- 9779 Nat. Copper / Nat. Copper Reflector



Adjustable Downlight w/ Reflector

#### •Ceiling Cut-out

3 5/8" dia



Hole Cut-out

#### •Adjustability

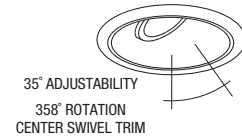
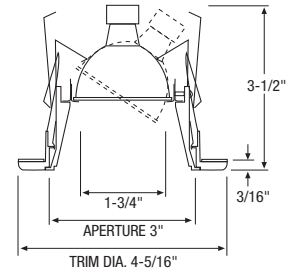
35° Adjustability  
358° Rotation of center swivel trim

#### •Lamp

Maximum 35W, 50W or 75W 12V MR16 bi-pin  
(lamp not included)

#### •Construction

Die Cast A380 Aluminum Trim  
Aluminum Reflector  
Natural Copper Reflector (9779 Trim)  
Spring Steel mounting clips  
Ceramic bi-pin socket (supplied with housing)



#### •Listings

UL 1598 listed



© Design copyright

#### •Housings



3.6 New Construction Housing

DX Integral Magnetic Transformer  
120V/11.6V, 35W-50W max. MR16 bi-pin

DX277 Integral Magnetic Transformer  
277V/11.6V, max. 50W MR16 bi-pin

DX75 Integral Magnetic Transformer  
120V/11.6V, max. 75W MR16 bi-pin



3.6 Remodel Housing

DXR Integral Magnetic Transformer  
120V/11.6V, max. 50W MR16 bi-pin

DXR277 Integral Magnetic Transformer  
277V/11.6V, max. 50W MR16 bi-pin

DXR35 Integral Magnetic Transformer  
120V/11.6V, max. 35W MR16 bi-pin



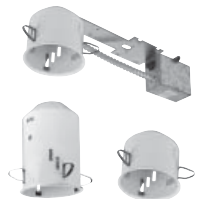
3.6 Insulated Ceiling Housing

DXIC Integral Electronic Transformer  
120V/11.6V, max. 50W MR16 bi-pin

DXIC-AT Air Tight Integral Electronic Transformer  
120V/11.6V, max. 50W MR16 bi-pin

DXICM Integral Magnetic Transformer  
120V/11.6V, max. 50W MR16 bi-pin

DXICM-AT Air Tight Integral Magnetic Transformer  
120V/11.6V, max. 50W MR16 bi-pin



3.6 Remote Transformer Housing

TCJ Tall Can w/J-Box & Thermal Protector  
120V/11.6V, max. 50W MR16 bi-pin

SCJ Short Can w/J-Box & Thermal Protector  
120V/11.6V, max. 35W MR16 bi-pin

TC Tall Can  
120V/11.6V, max. 50W MR16 bi-pin

SC Short Can  
120V/11.6V, max. 35W MR16 bi-pin

Trim	Housings	MR Optical Accessories	Lamp
<input type="checkbox"/> 9775BK Black <input type="checkbox"/> 9775BN Br. Nickel <input type="checkbox"/> 9775 White <input type="checkbox"/> 9776 White <input type="checkbox"/> 9777 Bronze <input type="checkbox"/> 9778 White <input type="checkbox"/> 9779 Nt. Copper	<input type="checkbox"/> DX <input type="checkbox"/> DX277 <input type="checkbox"/> DX75 <input type="checkbox"/> DXR <input type="checkbox"/> DXR277 <input type="checkbox"/> DXR35 <input type="checkbox"/> DXIC <input type="checkbox"/> DXIC-AT <input type="checkbox"/> DXICM <input type="checkbox"/> DXICM-AT <input type="checkbox"/> TCJ <input type="checkbox"/> SCJ <input type="checkbox"/> TC <input type="checkbox"/> SC	<input type="checkbox"/> 0-14 <input type="checkbox"/> 0-15 <input type="checkbox"/> 0-16 <input type="checkbox"/> 0-17 <input type="checkbox"/> 0-18 <input type="checkbox"/> 0-13 <input type="checkbox"/> 0-30 <input type="checkbox"/> 0-31 <input type="checkbox"/> 0-34	<hr/>

CREATIVE SYSTEMS LIGHTING A Division of Troy-CSL Lighting, Inc.

14625 E. Clark Avenue, City of Industry, CA 91745 Tel: 626-336-4511 Fax: 626-330-4266 www.csllighting.com