



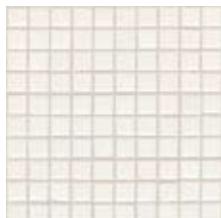
daltile®

ATHENA
MOSAICS™

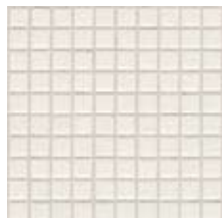
Professional
TILE SOLUTIONS

MOSAIC

SOLIDS



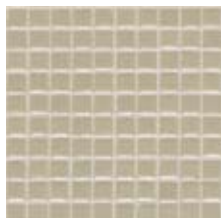
Arctic White AH01
1/2" x 1/2"



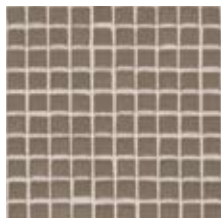
Pepper White AH12
1/2" x 1/2"



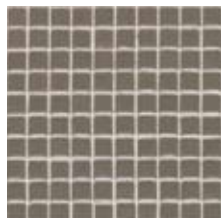
Almond AH02
1/2" x 1/2"



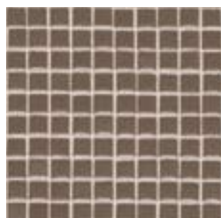
Urban Putty AH03
1/2" x 1/2"



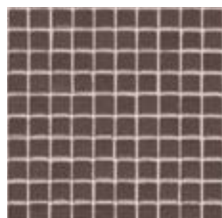
Elemental Tan AH04
1/2" x 1/2"



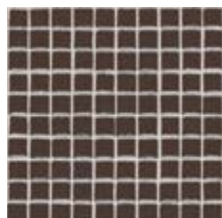
Pebble Tan AH19
1/2" x 1/2"



Artisan Brown AH13
1/2" x 1/2"



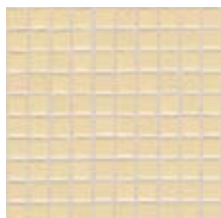
Flower Wood AH20
1/2" x 1/2"



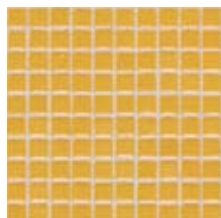
Cityline Kohl AH23
1/2" x 1/2"



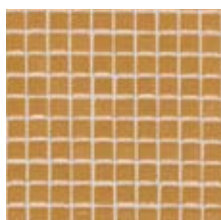
Crisp Linen AH05
1/2" x 1/2"



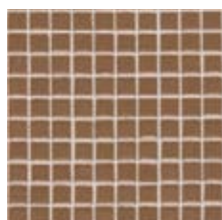
Cornsilk AH06
1/2" x 1/2"



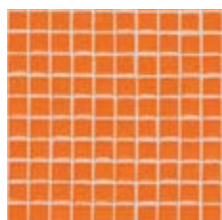
Mustard AH24
1/2" x 1/2"



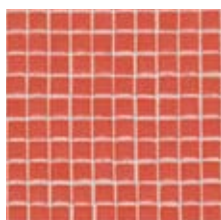
Gold Coast AH25
1/2" x 1/2"



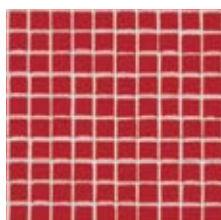
Camel AH17
1/2" x 1/2"



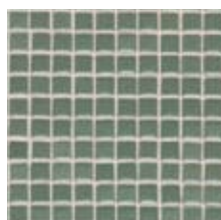
Orange Burst AH31
1/2" x 1/2"



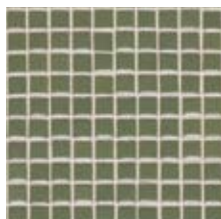
Coral Reef AH30
1/2" x 1/2"



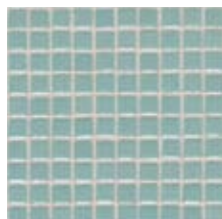
Cherry Red AH26
1/2" x 1/2"



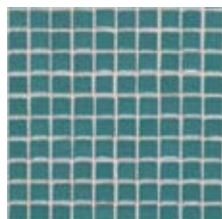
Cypress AH07
1/2" x 1/2"



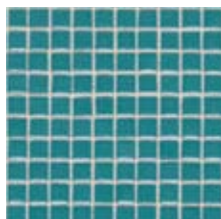
Avocado AH14
1/2" x 1/2"



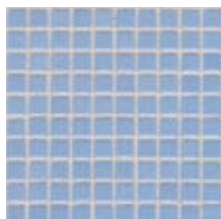
Spa AH10
1/2" x 1/2"



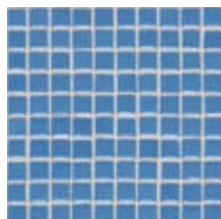
Aegean AH28
1/2" x 1/2"



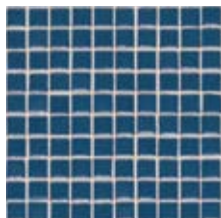
Ocean Blue AH27
1/2" x 1/2"



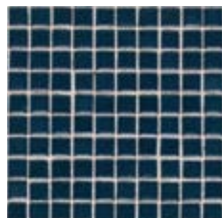
Baby Blue AH11
1/2" x 1/2"



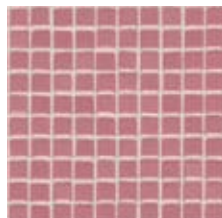
Blue Jean AH18
1/2" x 1/2"



Galaxy AH16
1/2" x 1/2"



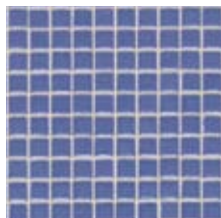
Navy AH22
1/2" x 1/2"



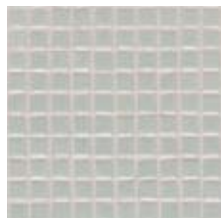
Carnation Pink AH29
1/2" x 1/2"



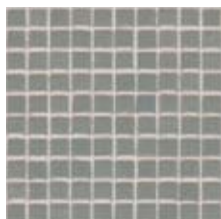
Wild Lilac AH32
1/2" x 1/2"



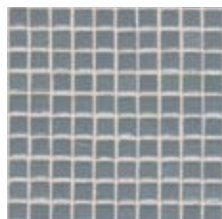
Periwinkle AH33
1/2" x 1/2"



Ice Gray AH08
1/2" x 1/2"



Stone Gray AH09
1/2" x 1/2"



Suede Gray AH21
1/2" x 1/2"

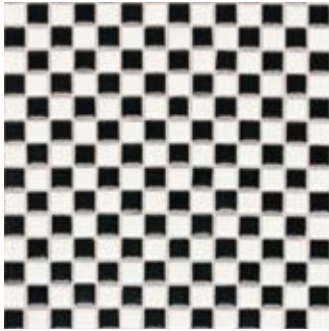


Black AH15
1/2" x 1/2"

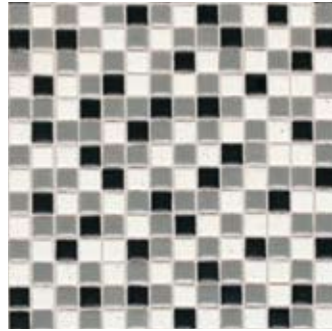


daltile®

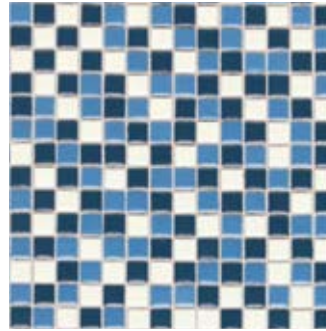
BLENDS



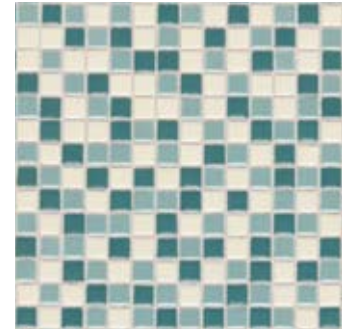
Match Point AH34
1/2" x 1/2"



Iron Gate AH38
1/2" x 1/2"



Nautical Breeze AH36
1/2" x 1/2"



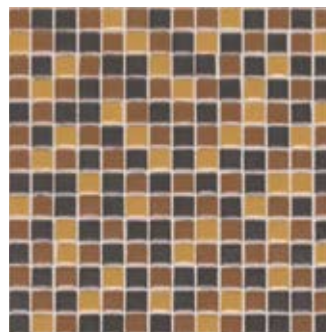
Pacific Mist AH39
1/2" x 1/2"



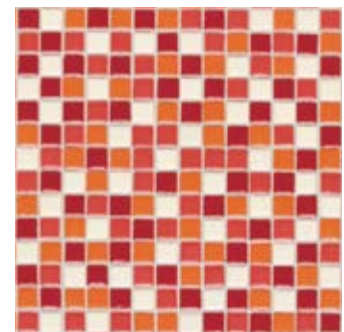
Cactus Hill AH40
1/2" x 1/2"



Autumn Harvest AH37
1/2" x 1/2"

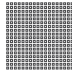


Toasted Almond AH35
1/2" x 1/2"




Coral Soiree AH41
1/2" x 1/2"

Sizes

	Nominal	Sq. Ft. per carton	Sheets per carton
 1/2" x 1/2" Field Tile (Mesh-mounted)	(Sheet Nominal 11-3/4" x 11-3/4") (Sheet Nominal 29.85 cm x 29.85 cm)	10.00	10

Installation

Thickness	Grout Joint Recommendation	Shade Variation
1/4"	1/8" Approximately	 Low (V1)

Notes

Use of a latex modified thin-set is recommended for installation.

Since there are variations in all fired ceramic products, the tile and trim supplied for your particular installation may not match these samples. Final color selection should be made from actual tiles and trim and not from tile and trim samples or color reproductions. Manufactured in accordance with ANSI A137.1 standards.

Application

	Residential	Light Commercial	Commercial	Commercial Exteriors
Floors	Bathrooms only	◆◆◆		
Walls/Backsplashes	◆	◆	◆	◆
Countertops*	◆	◆	◆	
Pool Decking				
Pool Linings	◆	◆	◆	◆

Suitable for exterior walls in freezing and non-freezing climates when proper installation methods are followed. Not for use on shower floors.

*Darker colors on counters may show scratches.

**Office building restroom floors and hotel baths only. Not for use on shower stall floors.

Test Results

	ASTM#	Result
Water Absorption	C373	<0.5%
Breaking Strength	C648	>350 lbs
Scratch Hardness	MOHS	6.0-7.5
Chemical Resistance	C650	Resistant
Coefficient of Friction	CI028	Wet: ≥0.50 Dry: ≥0.70
Abrasion Resistance	CI027	4

For additional information refer to "Factors to Consider" at:
www.daltile.com/CommercialFactors

Water, oil, grease etc. create slippery conditions. Floor applications with exposure to these conditions require extra caution in product selection. Not for use on ramps.

