

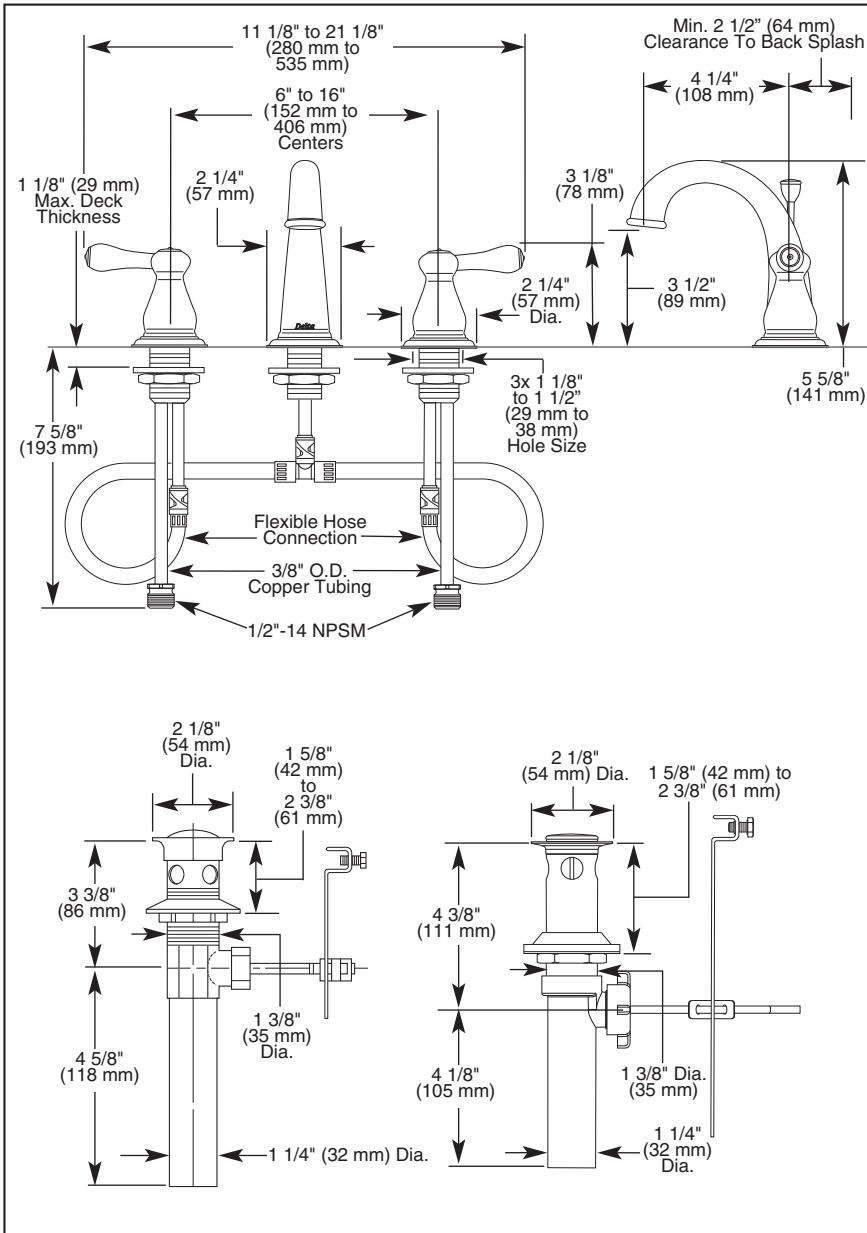


3575▲
3575▲-MPU
3575LF▲



Submitted Model No.: _____

Specific Features: _____



▲ Designate proper finish suffix



LAVATORY FAUCETS

- Leland® Bath Collection
- Two Handle Widespread Deck Mount
- 3 Hole Sink Applications
- 6" to 16" Centers
- Quick-Snap® Installation

STANDARD SPECIFICATIONS:

- Solid brass fabricated end valve and spout bodies.
- Widespread - 6" (152mm) to 16" (406 mm) centers.
- 4 1/4" (108 mm) long, 5 5/8" (141 mm) high rigid spout.
- Quick-Snap® installation.
- 1/4 turn handle stops.
- Hot and cold stems are interchangeable.
- Control mechanism is a rotating cylinder with stainless steel plate and 90° rotation, with replaceable non-metallic seats operating in stainless steel lined sockets.
- 3/8" O.D. copper supply tubes with 1/2"-14 NPSM adapters.
- Models without "MPU" suffix include polypropylene pop-up type drain fitting with plated metal flange and stopper cap.
- Models with "MPU" suffix include metal drain with pop-up type drain fitting with plated flange and stopper cap.
- Models have a maximum 1.5 gpm flowrate @ 60 PSI.
- Note: Standard mounting deck thickness can be extended 1" with RP10612.

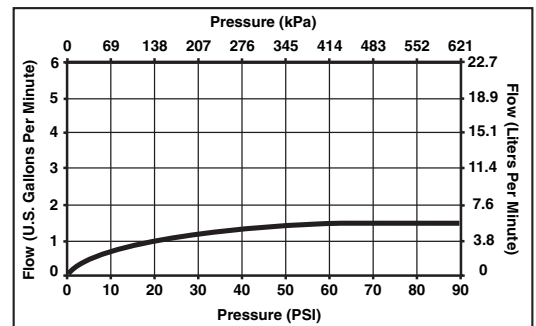
WARRANTY

- Lifetime Faucet and Finish Limited Warranty to the original consumer purchaser to be free from defects in material and workmanship.
- 5 Year Limited Warranty for usage in all industrial, commercial and business applications.



COMPLIES WITH:

- ASME A112.18.1 / CSA B125.1
- ASME A112.18.2 / CSA B125.2
- Indicates compliance to ICC/ANSI A117.1
- EPA WaterSense
- "LF" models verified compliant with .25% weighted average Pb surface regulations.



55 E. 111th Street, Indianapolis, Indiana 46280
395 Matheson Blvd. E., Mississauga, ON L4Z 2H2
© 2009 Masco Corporation of Indiana

Delta reserves the right (1) to make changes in specifications and materials, and (2) to change or discontinue models, both without notice or obligation. Dimensions are for reference only. See current full-line price book or www.specselect.com for finish options and product availability.