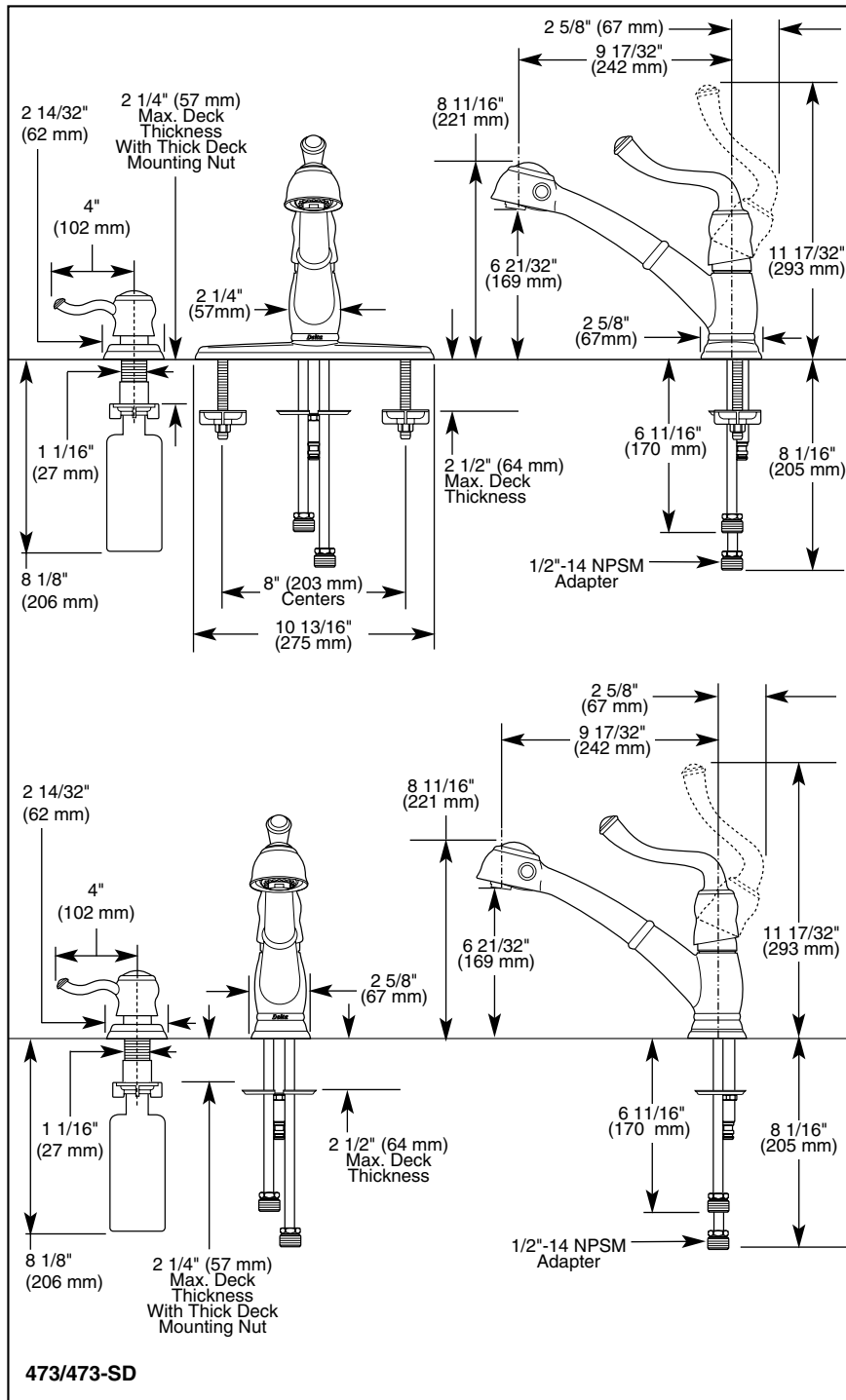


Submitted Model No.: _____

Specific Features: _____



DELTA

KITCHEN FAUCETS

- Single Handle
- Pull-Out Spray Series
- Saxony™ Deck Mount
- 1,2,3 or 4 Hole Sink Applications
- Centermount or 8" (203 mm) Centers with Optional Included 10 13/16" (275 mm) Escutcheon
- Quick Snap® Hose Installation



Drinking Water Systems Components
CLASSIFIED BY
UNDERWRITERS LABORATORIES INC.
In Accordance with Standard
ANSI/NSF 61
21PL

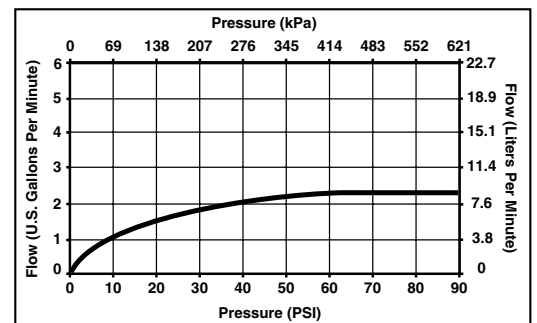


COMPLIES WITH:

- ASME A112.18.1
- CSA B125
- Indicates ADA compliance to CABO/ANSI A117.1
- IAPMO Listed
- CSA Certified
- City of L.A. approved

STANDARD SPECIFICATIONS:

- Single handle kitchen faucets for exposed mounting on 1, 2, 3, or 4 hole sinks.
- Centermount or 8" (203 mm) centers with optional included 10 13/16" (275 mm) long escutcheon.
- Solid brass fabricated body.
- 8 11/16" (221 mm) high, 9 17/32" (242 mm) long spout [includes 6 15/32" (164 mm) long pull-out spray] nestled in all brass hub assembly, swings 120°.
- Pull-out spout operates in an aerated or spray mode via an easy side-to-side push lever.
- Touch-Clean® sprayhead.
- Quick Snap® hose installation.
- Spout is connected to valve body with a 59" (1524 mm) long hose that extends to 38" (965 mm) usable length.
- Lever handle shall return to neutral position when faucet is turned off.
- Control mechanism shall be of the rotating stainless steel ball type with replaceable non-metallic seats operating in stainless steel lined sockets.
- Red/blue graphics on handle button to indicate hot/cold temperature.
- 3/8" O.D. straight, staggered copper supply tubes – 6 11/16" (170 mm) and 8 3/32" (206 mm) long.
- Standard with 1/2"-14 NPSM adapters.
- Each supply line has a back siphonage check valve. Spout contains a backflow check valve. Valve has an anti-siphon atmospheric vent in the stainless steel ball.



Delta reserves the right (1) to make changes in specifications and materials, and (2) to change or discontinue models, both without notice or obligation. Dimensions are for reference only.

DK-

Standard Features	473	473-BS	473-RB	473-SS	473-WH	473-SD	473-BSSD	473-RBSD	473-SSSD	473-WHSD
Washerless	◆	◆	◆	◆	◆	◆	◆	◆	◆	◆
10 13/16" (275 mm) Long Escutcheon Included/ Installation Optional	◆	◆	◆	◆	◆	◆	◆	◆	◆	◆
Single Hole Installation	◆	◆	◆	◆	◆					
Two Hole Installation						◆	◆	◆	◆	◆
Three Hole Installation – 8" (203 mm) Centers	◆	◆	◆	◆	◆					
Four Hole Installation						◆	◆	◆	◆	◆
Lever Handle	♿	♿	♿	♿	♿	♿	♿	♿	♿	♿
Red/Blue Graphics on Handle Button to Indicate Hot/Cold Temperature	◆	◆	◆	◆	◆	◆	◆	◆	◆	◆
8 11/16" (221 mm) High, 9 17/32" (242 mm) Long Spout [Includes 6 15/32" (164 mm) Long Pull-Out Spray] Nestled in All Brass Hub Assembly, Swings 120°	◆	◆	◆	◆	◆	◆	◆	◆	◆	◆
Pull-Out Spout Operates in Aerated or Spray Mode Via an Easy Side-to-Side Push Lever	◆	◆	◆	◆	◆	◆	◆	◆	◆	◆
Touch-Clean® Sprayhead	◆	◆	◆	◆	◆	◆	◆	◆	◆	◆
Quick Connect Hose Installation	◆	◆	◆	◆	◆	◆	◆	◆	◆	◆
Spout is Connected to Valve Body with 59" (1524 mm) Long Hose that Extends to 38" (865 mm) Usable Length	◆	◆	◆	◆	◆	◆	◆	◆	◆	◆
3/8" O.D. Straight, Staggered Copper Supply Tubes – 6 11/16" (170 mm) and 8 3/32" (206 mm) Long	◆	◆	◆	◆	◆	◆	◆	◆	◆	◆
Standard with 1/2"-14 NPSM Adapters	◆	◆	◆	◆	◆	◆	◆	◆	◆	◆
2 1/2" (64 mm) Thick Deck Installation Capability	◆	◆	◆	◆	◆					
2 1/4" (57 mm) Thick Deck Installation Capability						◆	◆	◆	◆	◆
Includes Soap/Lotion Dispenser						◆	◆	◆	◆	◆
Chrome Finish	◆					◆				
Biscuit Finish		◆					◆			
Venetian Bronze™ Finish			◆					◆		
Brilliance® Stainless Finish				◆					◆	
White Finish					◆					◆



Indianapolis, Indiana 46280
A Division of Masco Corporation of Indiana
© 2002 Masco Corporation of Indiana