

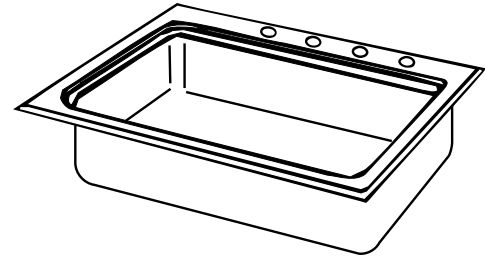
SPECIFICATIONS

GENERAL

Lustertone sink with spacious sink bowl. Highest quality sink seamlessly drawn of #18 gauge, type 304 (18-8) nickel bearing stainless steel. Self-rimming.

DESIGN FEATURES

Bowl Depth: 5-1/2", 6" or 6-1/2".
 Coved Corners: 1-3/4" radius.
 Bowl and Faucet Deck Recess: 3/16" below outside edge of sink.
 Finish: Exposed surfaces are hand blended to a lustrous highlighted satin finish.
 Underside: Fully undercoated to dampen sound and prevent condensation.



Model LRAD2219

OTHER

Drain Opening: See illustrations.
 These sinks comply with ANSI Standard A112.19.3M.



These sinks are ADA compliant.

Note: Unless otherwise specified, models with one, two or three faucet hole option are shipped with 3 faucet holes standard; models with choice of one, two, three, four or five faucet hole option are shipped with 4 faucet holes standard.

SINK DIMENSIONS (INCHES)*

Model Number	Overall		Inside Each Bowl			Cutout in Countertop (1 1/2" Radius Corners)		No. of 1 1/2" Dia. Faucet Holes 4" Center	Ship. Wt. Lbs.	3 1/2" Drain Openings
	L	W	L	W	D	L	W			
LRAD1918	19	18	16	11 1/2	**	18 3/8	17 3/8	1, 2, or 3	13	Off-Centered
LRAD1918L	19	18	16	11 1/2	**	18 3/8	17 3/8	1, 2, or 3	13	Left
LRAD1918R	19	18	16	11 1/2	**	18 3/8	17 3/8	†	13	Right
LRAD2219	22	19 1/2	18	14	**	21 3/8	18 7/8	†	13	Off-Centered
LRAD2219L	22	19 1/2	18	14	**	21 3/8	18 7/8	†	13	Left
LRAD2219R	22	19 1/2	18	14	**	21 3/8	18 7/8	†	13	Right
LRAD2521	25	21 1/4	21	15 3/4	**	24 3/8	20 5/8	†	15	Off-Centered
LRAD2521L	25	21 1/4	21	15 3/4	**	24 3/8	20 5/8	†	15	Left
LRAD2521R	25	21 1/4	21	15 3/4	**	24 3/8	20 5/8	†	15	Right

*Length is left to right. Width is front to back.
 **Available in 5-1/2", 6" and 6-1/2" depths. Please consult your sales representative for other depths or modifications.
 †1, 2, 3, 4 or 5 holes.

SEE OTHER SIDE FOR PRODUCT DIMENSIONS.

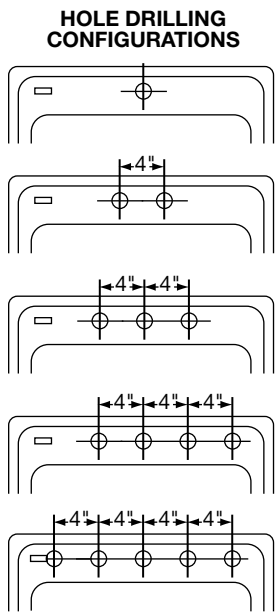
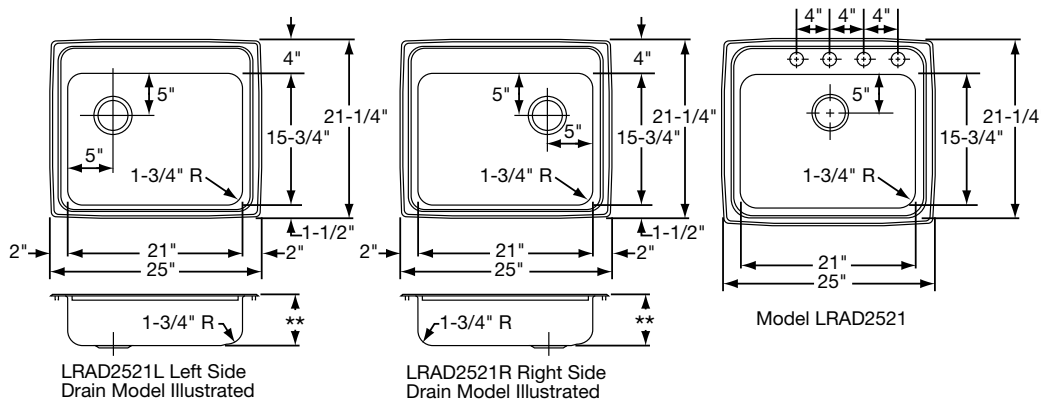
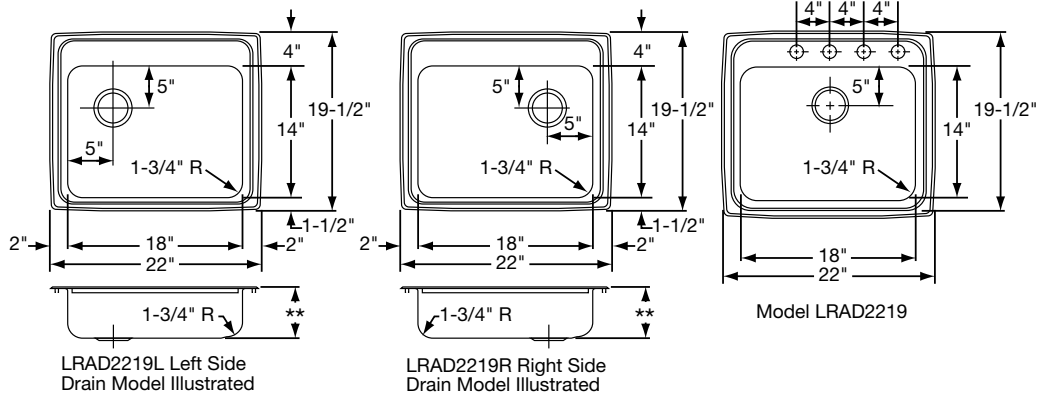
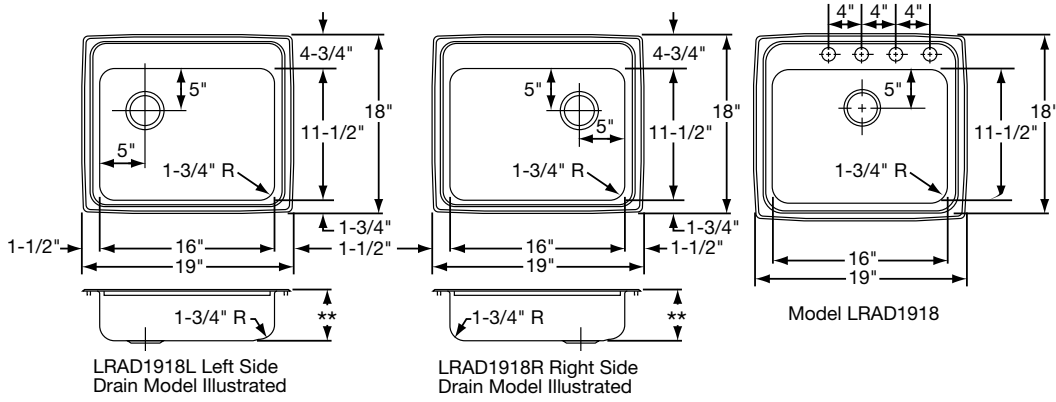
THIS PRODUCT, AS CONSTRUCTED IS SUBJECT TO INTERPRETATION OF A.D.A. REQUIREMENTS. THE UNOBSTRUCTED KNEE SPACE REQUIRED TO SATISFY A.D.A. STANDARDS MAY NOT BE DESIRABLE.

ALL DIMENSIONS IN INCHES. TO CONVERT TO MILLIMETERS MULTIPLY BY 25.4.

In keeping with our policy of continuing product improvement, Elkay reserves the right to change product specifications without notice.

This specification describes an Elkay product with design, quality and functional benefits to the user. When making a comparison of other producers' offerings, be certain these features are not overlooked.

SPECIFICATIONS



**Available in 5-1/2", 6" and 6-1/2" depths. Please consult your sales representative for other depths or modifications.

ALL DIMENSIONS IN INCHES. TO CONVERT TO MILLIMETERS MULTIPLY BY 25.4.

In keeping with our policy of continuing product improvement, Elkay reserves the right to change product specifications without notice.

This specification describes an Elkay product with design, quality and functional benefits to the user. When making a comparison of other producers' offerings, be certain these features are not overlooked.