

SPECIFICATIONS

GENERAL

Highest quality sink seamlessly drawn of #18 gauge, type 304 (18-8) nickel bearing stainless steel.

DESIGN FEATURES

Bowl Depth: 4-3/4" (RLR-9), 6" (RLR-12) and 6" (RLLVR-12).

Finish: Exposed surfaces are hand blended to a lustrous highlighted satin finish.

Underside: Underside of sink is fully undercoated to prevent condensation and deaden sound.

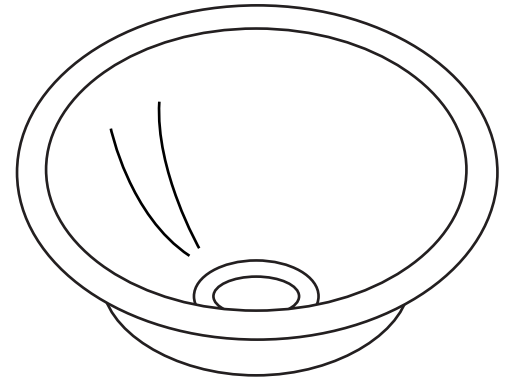
Model RLLVR-12 single bowl lavatory sink with overflow.

OTHER

Drain opening: 1-1/2" (RLLVR-12), 2" [RLR-9(12)]

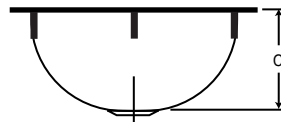
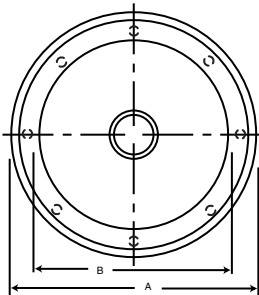
These sinks comply with ANSI standard A112.19.3M.

SINK DIMENSIONS

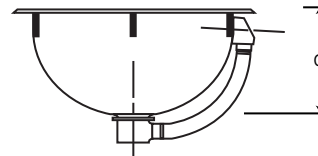


Model RLR-9

Model Number	DIMENSIONS IN INCHES			Cutout In Countertop Use Sink Up-side-down as template and cut 5/16" INSIDE Sink Outline	Ship. Wt. Lbs.	Includes Overflow Assembly
	Overall					
	Outside Diameter A	Inside Diameter B	Depth C			
RLR-9	11 ³ / ₈	9	4 ³ / ₄		3	No
RLR-12	14 ³ / ₈	12	6		5 ³ / ₄	No
RLLVR-12	14 ³ / ₈	12	6		7	Yes



Model RLR-Series Illustrated



Model RLLVR-12 Illustrated

ALL DIMENSIONS IN INCHES. TO CONVERT TO MILLIMETERS MULTIPLY BY 25.4.

In keeping with our policy of continuing product improvement, Elkay reserves the right to change product specifications without notice.

This specification describes an Elkay product with design, quality and functional benefits to the user. When making a comparison of other producers' offerings, be certain these features are not overlooked.