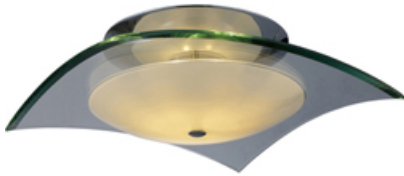




Product Specifications for E20524-10

| | |
|-----------|-----------|
| Job Name: | Job Type: |
| Quantity: | Comments: |



E20524-10
Curva 2-Light Flush Mount

Finish
Polished Chrome

Glass/Shade
Clear/White

Product Category
Flush Mount

Lamping

| | |
|----------------------------|--------------|
| Number of Bulb(s) | 2 |
| Light Type | Xenon |
| Bulb Type | G9 Frost |
| Max Bulb Wattage | 50 |
| Max Fixture Wattage | 100 |
| Rated Life | ±2,000 Hours |
| Rated Lumens | ±1,500 |
| Color Temp | ±2,900 K |
| Bulb(s) Included | Yes |
| Light Up/Down | N/A |
| Beam Spread | N/A |
| CRI | N/A |
| Photo Cell Included | N/A |
| Ballast/Driver/Transformer | No |
| Dimmable | Standard |

Measurements

| | |
|--------------------|------------|
| Width | 12.00" |
| Height | 4.50" |
| Length | 12.00" |
| Extension | N/A |
| Back Plate Width | N/A |
| Back Plate Height | N/A |
| HCO | N/A |
| Min Overall Height | N/A |
| Max Overall Height | N/A |
| Hanging Weight | 6.62 lb(s) |
| Height Adjustable | N/A |
| Slope | N/A |
| Chain Length | N/A |
| Wire Length | N/A |
| Canopy Width | 7.0" |
| Canopy Height | 0.6" |
| Canopy Length | N/A |

Shipping

| | |
|--------------------|-------------|
| Carton Weight | 8.20 lb(s) |
| Carton Width | 15.13" |
| Carton Height | 7.13" |
| Carton Length | 15.13" |
| Carton Cubic Feet | N/A |
| Master Pack | 6 |
| Master Pack Weight | 52.00 lb(s) |
| Master Pack Width | 15.35" |
| Master Pack Height | 22.20" |
| Master Pack Length | 30.31" |
| Master Cubic Feet | N/A |
| UPS Shippable | Yes |

Certification

| | |
|---------------|-----|
| Safety Rating | Dry |
| Energy Star | No |
| CA Title 24 | No |
| CA Title 20 | No |
| ADA | No |

Other

| | |
|----------|--------------|
| UPC Code | 845094012658 |
| Material | N/A |

Equivalents

| | |
|--------------------|-----|
| Incandescent Watts | N/A |
| Fluorescent Watts | N/A |

ET2 Contemporary Lighting and all designs, logos and images © 2014 ET2 Contemporary Lighting. All Rights Reserved. ET2 Contemporary Lighting reserves the right, at any time, to make changes in the design and/or construction of the product including the discontinuation of product without prior notice. Color may vary from what is pictured above due to limitations inherent to photographic processes. Always consult a qualified, licensed electrician before installation of any product weighing 35 pounds or more. We recommend that a qualified, licensed electrician do the installation. Always install to a mechanically sound structure.