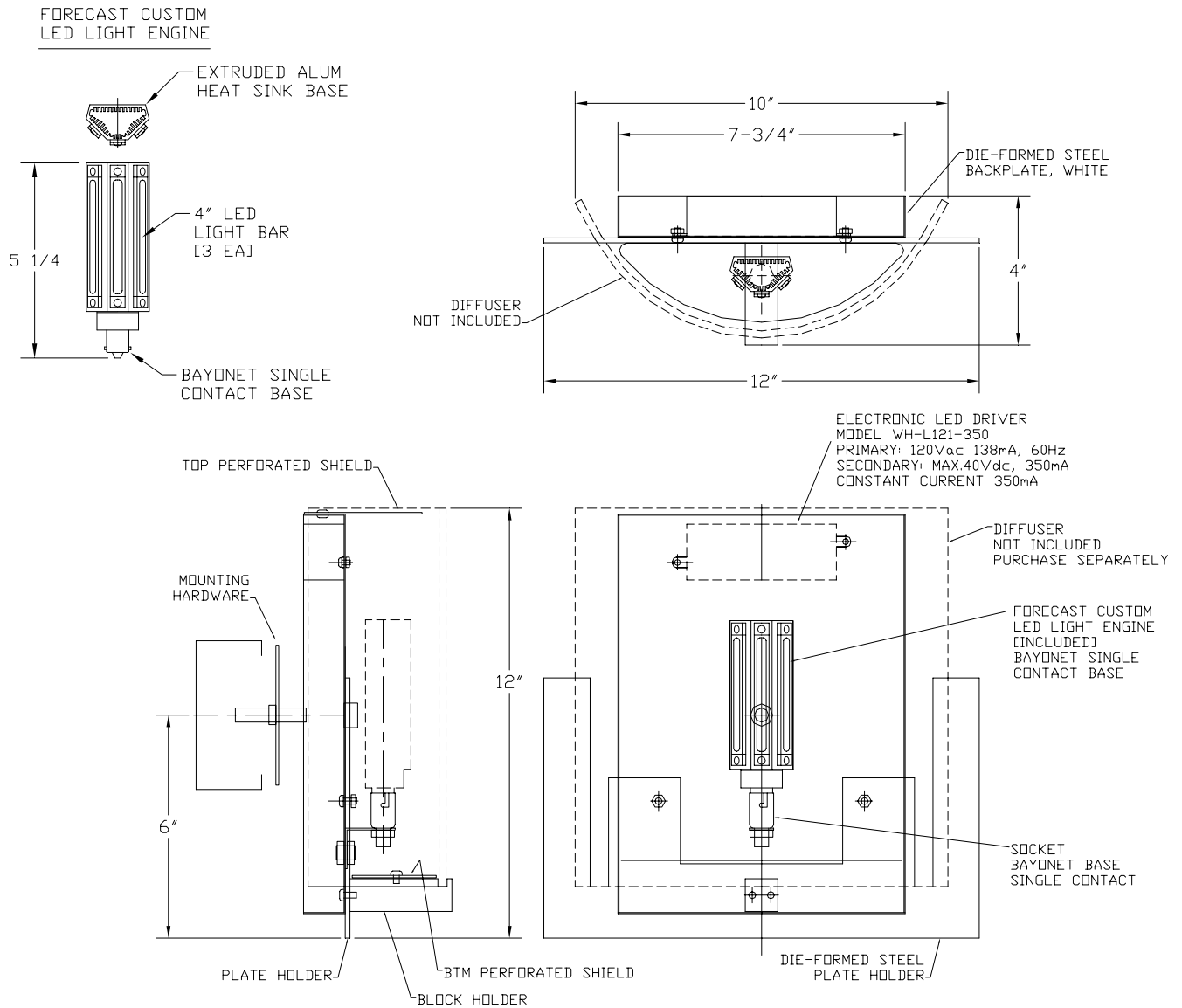


Specification Sheet

LED Wall Holder ADA

Model: **F7104-36E1 Satin Nickel**  
**F7104-70E1 Merlot Bronze**



Holder Finishes: Satin Nickel -36; Merlot Bronze -70

Width: 5-1/2" Height: 12" Extension: 4"

LED Light Engine: 1 - 10W Proprietary Light Engine, Bayonet Single Contact Base (Included)

- 900 Lumens Initial Output, 360 degree dispersion
- Expected Life: 50,000 hours to 70% of original brightness level
- 2700K, 80CRI

Driver: Electronic 120V 60Hz, Constant Current 350mA, Non-dimmable.

Label: cULus Listed. Suitable for Dry Locations.

Diffuser must be Purchased Separately.