

Important notices before starting installation:

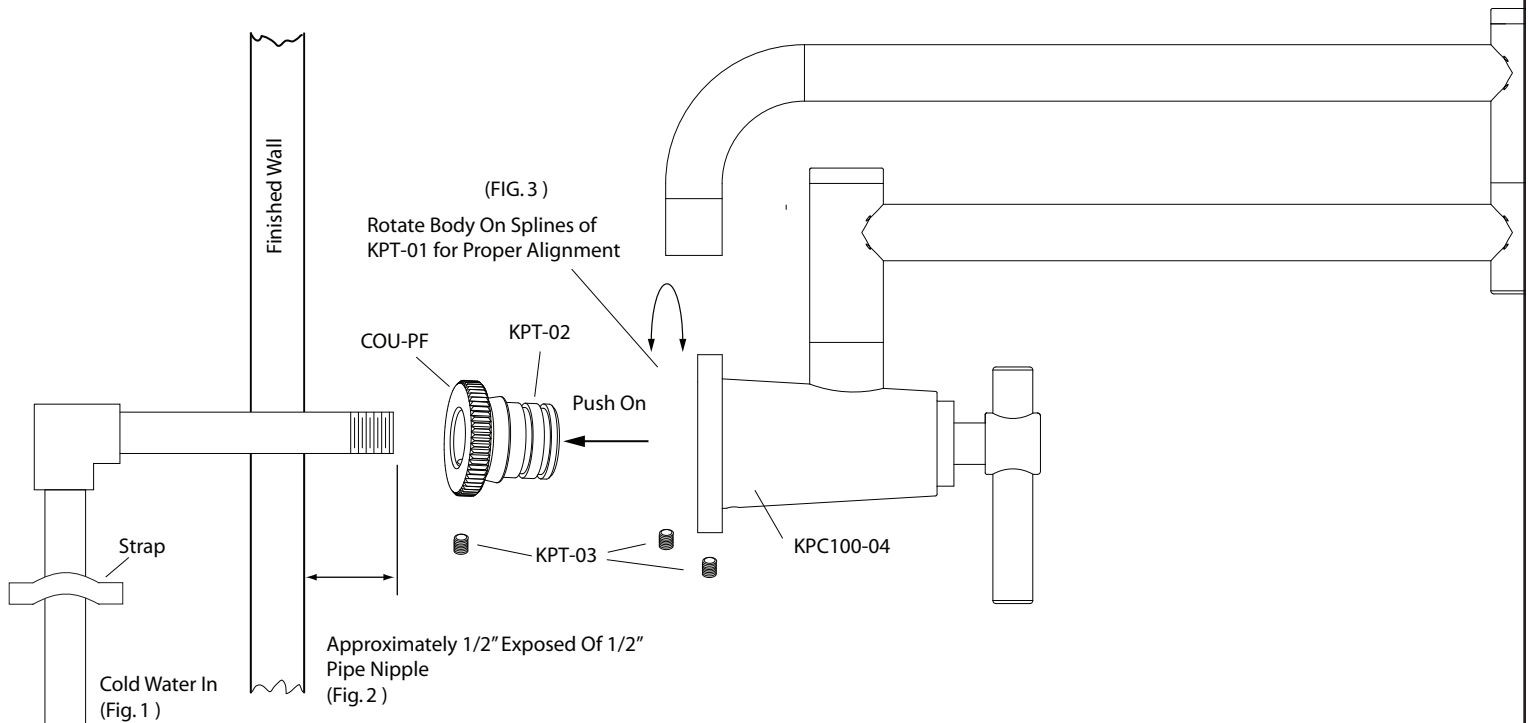
- **This faucet must be installed by a qualified licensed plumber in accordance with all local city and state plumbing codes**
- Customer is to determine installation height above stove or cook top
- Install a supply stop valve on cold water line where accessible then route water supply to the installation area
- Maximum operating pressure is 125 PSI
- Read entire instructions before installing

Step 1- Before installing the faucet the stove or cook top should be removed or covered in plastic to prevent any possible water damage. Electric stoves must have the circuit breaker in the off position.

Step 2- Strap 1/2" water supply to stud or backing inside wall to keep from moving (Fig. 1).

Step 3- Rough-in so that 1/2" threaded pipe nipple protrudes approximately 1/2" beyond finished wall (Fig. 2).

Step 4- Apply Teflon tape to exposed pipe nipple then screw on quick connector COU-PF so it is flush to finished wall. Secure by tightening set screw KPT-03 with wrench provided KPT-11 .



Step 5 - Rotate faucet until correct alignment is made (spout should be pointing straight down) Fig.3. Push the faucet body onto the quick connector over the two o-ring seals KPT-02 . The splines inside the faucet body should line up with the splines on the quick connector.

Step 6 - Secure the faucet by tightening the two bottom set screws KPT-03 .

Giagni



For additional assistance or service call: 1-888-560-5222 USA 8:30 a.m. to 5:30 p.m. EST Monday-Friday

Pot Filler Installation Instructions

KPC100

Step 7- Open supply stop valve and check for leaks.

Step 8- Remove aerator KPC100-10 and turn on faucet for approximately two minutes to flush any debris from the water line. Run water into a large pan or bucket.

Step 9- Replace aerator and clean faucet with warm water and a soft cotton towel.

ÿ Note - If the ceramic cartridge KPC100-05 should ever need to be removed for cleaning or replacing:

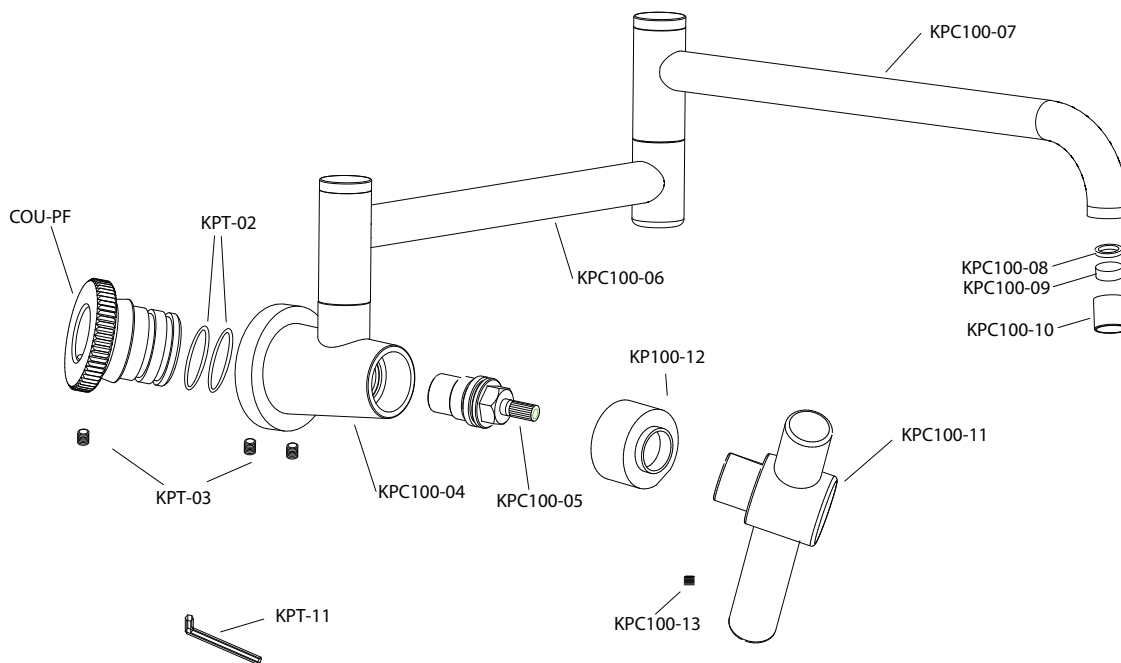
Step 10 - Turn off water supply valve and remove handle assembly.

Step 11 - Unscrew ceramic cartridge KPC100-05 counter clockwise using a small crescent wrench and remove.

Step 12- Replace cartridge and handle assembly in reverse order.

Maintenance:

Clean with warm water, soft cotton cloth and non-abrasive liquid dish soap. Towel Dry.
Never use acids, harsh abrasives or detergents.



Giagni



For additional assistance or service call: 1-888-560-5222 USA 8:30 a.m. to 5:30 p.m. EST Monday-Friday