

PARTS LIST

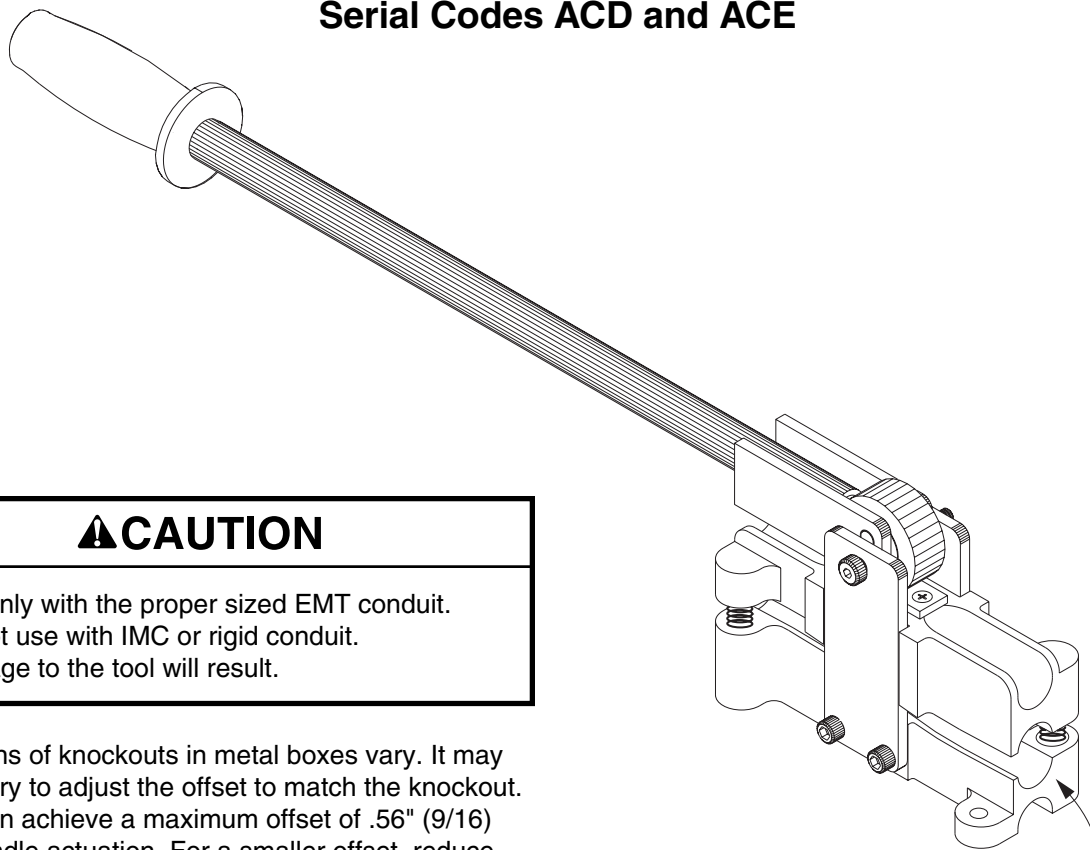


GREENLEE®

A Textron Company

1810 and 1811 Little Kicker® Hand Benders for 1/2" and 3/4" EMT

Serial Codes ACD and ACE



▲ CAUTION

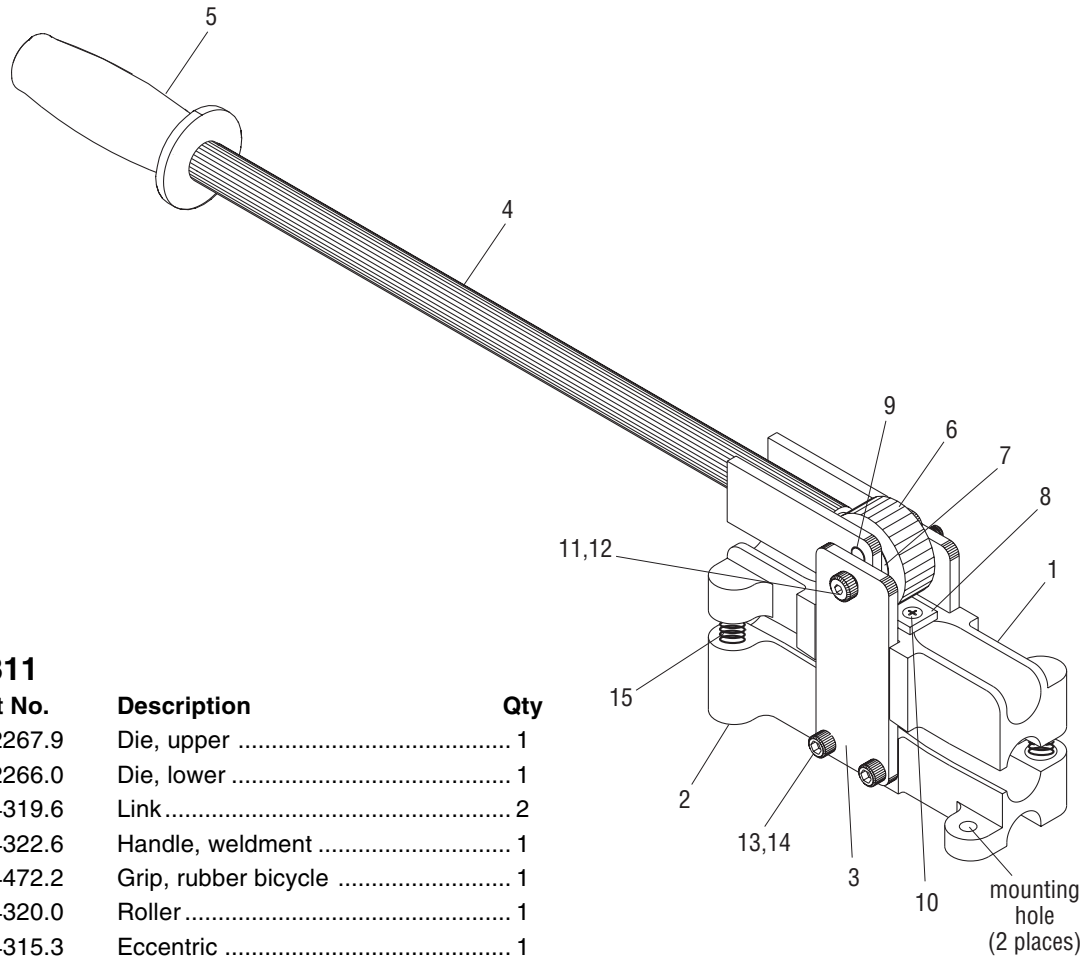
Use only with the proper sized EMT conduit.
Do not use with IMC or rigid conduit.
Damage to the tool will result.

The locations of knockouts in metal boxes vary. It may be necessary to adjust the offset to match the knockout. This tool can achieve a maximum offset of .56" (9/16) with full handle actuation. For a smaller offset, reduce the amount of handle actuation.

For best results, mount the bender to a bench top or similar surface. Use the mounting holes provided.

Little Kicker is a registered trademark of Greenlee Textron.

End of conduit
should stick out of the
low side of the dies.



Key	1810 Part No.	1811 Part No.	Description	Qty
1	500 3011.6	500 2267.9	Die, upper	1
2	500 3010.8	500 2266.0	Die, lower	1
3	500 4319.6	500 4319.6	Link.....	2
4	500 4322.6	500 4322.6	Handle, weldment	1
5	905 4472.2	905 4472.2	Grip, rubber bicycle	1
6	500 4320.0	500 4320.0	Roller	1
7	500 4315.3	500 4315.3	Eccentric	1
8	500 4323.4	500 4323.4	Plate, wear	1
9	905 5018.8	905 5018.8	Dowel, .375 dia. x 1.375 lg.	1
10	905 0324.4	905 0324.4	Screw, mach. #10-24 x .5 lg.	2
11	905 5021.8	905 5021.8	Screw, shoulder 1/2" x 2" lg.	1
12	905 0639.1	905 0639.1	Nut, hex 3/8"-16	1
13	905 0232.9	905 0232.9	Screw, socket head cap 5/16"-18	2
14	905 0638.3	905 0638.3	Nut, hex 5/16"-18	2
15	501 4576.2	501 4576.2	Spring, compression	2
16	500 4324.2	500 4326.9	Decal, identification (not shown)	1



USA	800-435-0786	Fax: 800-451-2632
	815-397-7070	Fax: 815-397-1865
Canada	800-435-0786	Fax: 800-524-2853
International	+1-815-397-7070	Fax: +1-815-397-9247

4455 Boeing Drive • Rockford, IL 61109-2988 • USA • 815-397-7070
 An ISO 9001 Company • Greenlee Textron is a subsidiary of Textron Inc.