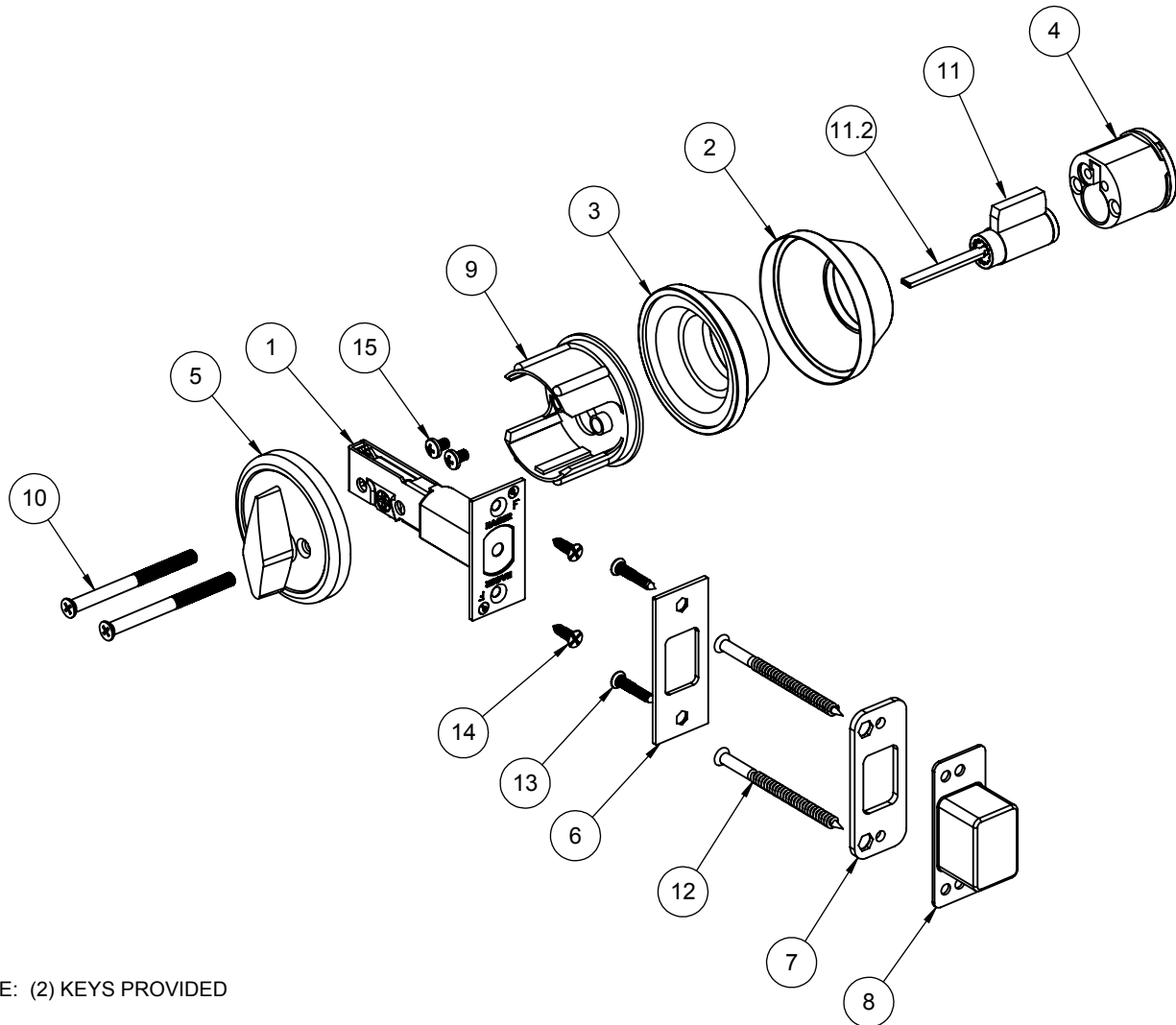



ITEM NO.	QTY.	FILE NAME	DESCRIPTION
1	1	S-LS00007	3940 DEADBOLT LATCH (2-3/4" BACKSET)
2	1	S-LS00728	CYLINDER ROSE
3	1	S-LS00726	CYLINDER ROSE LINER
4	1	S-LS00718	EXTERIOR DOUBLE CYLINDER HOUSING
5	1	S-LS00717	INSIDE THUMBTURN ASSEMBLY
6	1	S-LS00723	DEADBOLT STRIKE
7	1	S-LS00724	DEADBOLT WOOD REINFORCER
8	1	S-LS00725	DEADBOLT DUST BOX
9	1	S-LS00379	STANDARD CYLINDER FIRE SHIELD
10	2	S-LS00883	CUSTOM #12-24 X 2-5/8" FPHMS
11	1	S-LS00617	6-PIN DRILLED CYLINDER
11.2	1	S-LS00219	TAILPIECE (2-639-7007)
12	2	S-LS00885	CUSTOM #10 X 3" FPHWS
13	2	S-LS00882	#8 X 1-1/4" FPH COMBO SCREW
14	2	S-LS00882	#8 X 3/4" FPH COMBO SCREW
15	2	pan cross head_ai	#8-32 X 1/4" PHMS



NOTE: (2) KEYS PROVIDED

 <p>PROPRIETARY & CONFIDENTIAL THE INFORMATION CONTAINED IN THIS DRAWING IS THE SOLE PROPERTY OF HAGER COMPANIES. ANY REPRODUCTION IN PART OR AS A WHOLE WITHOUT THE WRITTEN PERMISSION OF HAGER COMPANIES IS PROHIBITED.</p>	<p>HAGER RESERVES THE RIGHT TO MAKE DESIGN CHANGES WITHOUT NOTICE. CALL HAGER ENGINEERING AT 1-800-325-9995 FOR THE LATEST REVISION DATE OF TEMPLATE.</p>	DRAWN	MRJ	9/9/2009	<p>3215 GRADE 2 - CYLINDER X THUMBTURN DEADBOLT</p>	
		MATERIAL	Material <not specified>			
		FINISH	-			
		DO NOT SCALE DRAWING				
<p>TOLERANCES: FRACTIONAL: $\pm 0.015"$ ANGULAR: MACH: $\pm 1^\circ$ BEND: $\pm 1^\circ$ TWO PLACE DECIMAL: $\pm 0.01"$ THREE PLACE DECIMAL: $\pm 0.004"$</p>		<p>ENG. APPR.</p> <p>Q.A.</p>	<p>SCALE: 1:4</p>	<p>WTG: 1.61</p>	<p>REV. -</p>	
<p>SIZE A</p>	<p>DWG. NO. S-LS00825</p>	<p>SHEET 1 OF 1</p>				