



45NL

Description: Rim > 4500 Series Trim

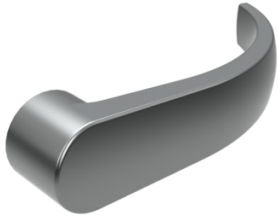


Function - 03 - Key Retracts Latchbolt
Lever - Archer, August and Withnell levers available

Escutcheon - 2-3/4" (70 mm) x 10-3/4" (273 mm)
Finishes - US3, US4, US10, US10B, US26, US26D
Cylinder - Rim Cylinder sold separately (Long tailpiece required)



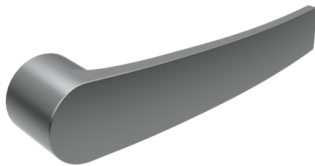
HAGER EXIT DEVICE LEVER OPTIONS



ARCHER LEVER

Available on:

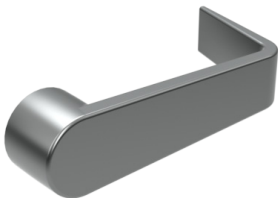
- 4500 Series Trim (45BE, 45CE, 45DT, 45NL)
- 4500 Series Trim Electrified (45ET)
- 4700 Series Trim (47BE, 47CE, 47DT, 47NL)
- 4700 Series Key-in-Lever Trim (47KD, 47KE, 47KN, 47KP)



AUGUST LEVER

Available on:

- 4500 Series Trim (45BE, 45CE, 45DT, 45NL)
- 4500 Series Trim Electrified (45ET)
- 4700 Series Trim (47BE, 47CE, 47DT, 47NL)
- 4700 Series Key-in-Lever Trim (47KD, 47KE, 47KN, 47KP)



WITHNELL LEVER

Available on:

- 4500 Series Trim (45BE, 45CE, 45DT, 45NL)
- 4500 Series Trim Electrified (45ET)
- 4700 Series Trim (47BE, 47CE, 47DT, 47NL)
- 4700 Series Key-in-Lever Trim (47KD, 47KE, 47KN, 47KP)

