



Features:

- Cast brass valves
- Ceramic disc valve cartridge
- Adjustable hot limit safety stop
- Pressure Balance cartridge maintains constant output temperature in response to changes in relative hot and cold supply pressures
- Multi-functional showerhead
- Available with Cross or Lever Handle

Pictured: 818/450 Shower Set with Cross Handle

Showerhead Maximum Flow Rate: 2.5 GPM (9.5L/min)

| Kit Options | Handle Type | Product Number |
|---------------------|-------------|----------------|
| Shower Set | Cross | 818/450 |
| Shower Set | Lever | 818/451 |
| PB Shower Valve Set | Cross | 818/130 |
| PB Shower Valve Set | Lever | 818/131 |



| Available Finishes: | Finish Code |
|---------------------|-------------|
| Polished Chrome | 100 |
| Brushed Nickel | 144 |
| Platinum Nickel | 150 |
| Diamond (PVD) | 167 |

| Rough & Trim Options | Handle Type | Product Number |
|---------------------------------|-------------|----------------|
| Shower Set Trim Only* | Cross | 818/485 |
| Shower Set Trim Only* | Lever | 818/486 |
| PB Shower Valve Set Trim Only** | Cross | 818/535 |
| PB Shower Valve Set Trim Only** | Lever | 818/536 |
| Showerhead Only | | 818/082 |
| Rough Only | | 899/260/191 |

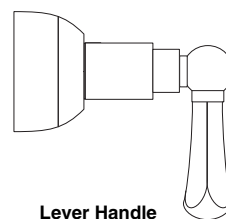


* Includes Pressure Balance Shower Valve Trim & Showerhead

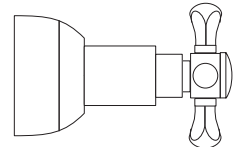
**Pressure Balance Shower Valve Trim Only

| Extension Kits | Product Number |
|-------------------------|----------------|
| PB Handle Extension Kit | A3195.191 |

Handle Options:



Lever Handle



Cross Handle

ROUGH-IN DIAGRAM SHOWN ON REVERSE SIDE

CODES & STANDARDS

These products meet and exceed the following codes and standards:

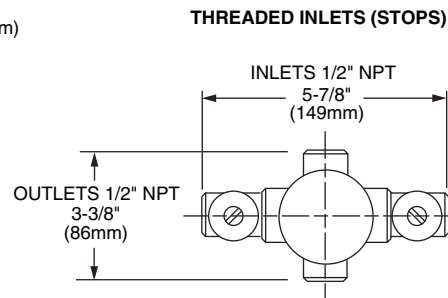
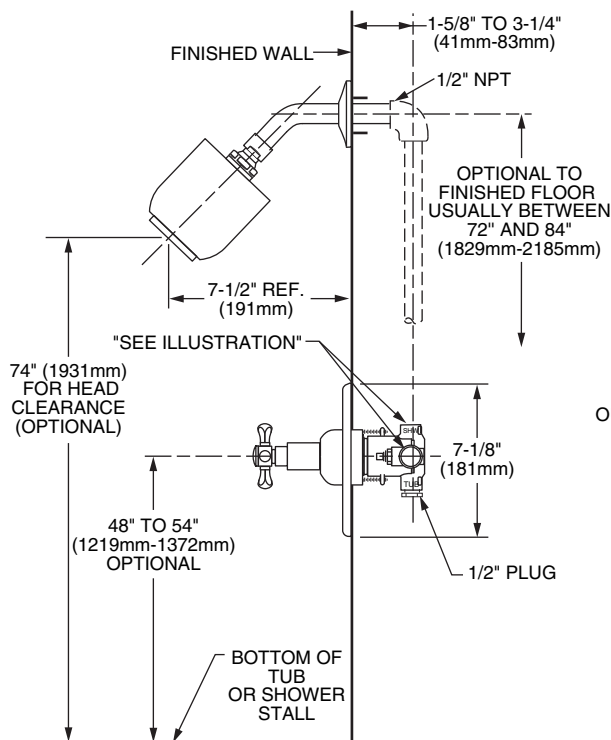
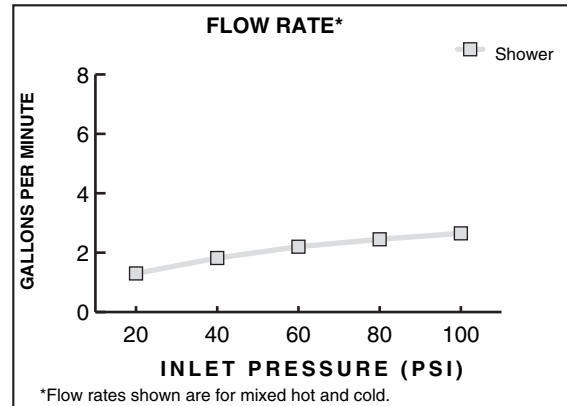
ASME A112.18.1

CSA B125

ASSE1016



Meets the American Disabilities Act Guidelines and **ANSI A117.1** Requirements for the physically challenged.



IMPORTANT: These measurements are subject to change or cancellation. No responsibility is assumed for use of superseded or voided pages.