



Features:

- Cast Brass valve body with built-in check stops
- Ceramic disc valve cartridge
- Adjustable hot limit safety stop
- Thermostatic unit permits shuttle valve to move between the hot and cold seats to maintain the preselected constant water temperature

Maximum Temperature Limit: 112°

| Kit Options | Handle Type | Product Number |
|------------------------------------|-------------|----------------|
| 3/4" Thermostatic Mixing Valve Set | Lever | 820/781 |

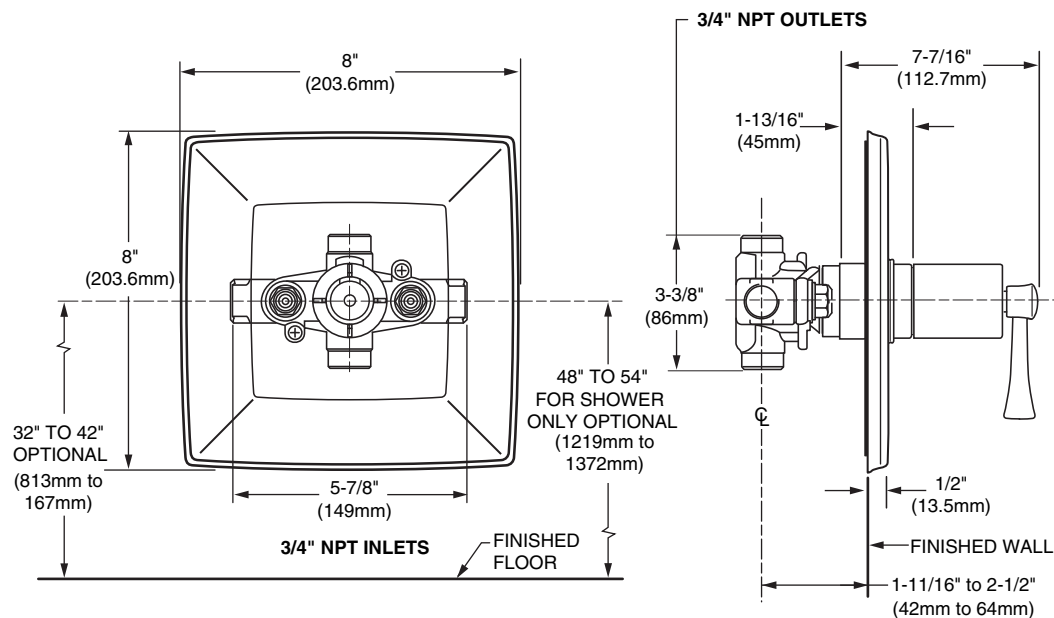


| Rough & Trim Options | Handle Type | Product Number |
|----------------------|-------------|----------------|
| Trim Only | Lever | 820/708 |
| Rough Only | | 875/614/191 |



| Extension Kits | Product Number |
|----------------------|----------------|
| Handle Extension Kit | H960892.191 |

| Available Finishes: | Finish Code |
|---------------------|-------------|
| Polished Chrome | 100 |
| Old Bronze | 105 |
| Brushed Nickel | 144 |
| Platinum Nickel | 150 |



IMPORTANT: These measurements are subject to change or cancellation. No responsibility is assumed for use of superseded or voided pages.

CODES & STANDARDS

These products meet and exceed the following codes and standards:

ASME A112.18.1

CSA B125

ASSE1016



Meets the American Disabilities Act Guidelines and **ANSI A117.1** Requirements for the physically challenged.

