





Features:

- Cast brass valve
- Ceramic disc valve cartridge
- Adjustable hot limit safety stop
- Pressure Balance cartridge maintains constant output temperature in response to changes in relative hot and cold supply pressures
- Concealed mounting hardware
- Adjustable showerhead
- Maximum Showerhead Flow Rate: 2.5 GPM (9.5L/min)

Description	Handle Type	Product Number
Shower Set	Lever	848/451 
PB Shower Valve Set	Lever	848/131 

Available Finishes	Finish Code
Polished Chrome	100
Brushed Nickel	144
Platinum Nickel	150

Rough & Trim Options	Handle Type	Product Number
Shower Set Trim Only*	Lever	848/486 
PB Shower Valve Set Trim Only **	Lever	848/536 
Showerhead Only		860/085
Rough Only		899/260/191

* Includes Pressure Balance Shower Valve Trim, Showerhead & Shower Arm.

**Pressure Balance Shower Valve Trim Only

Extension Kit	Product Number
PB Handle Extension Kit	A3195.191

ROUGH-IN DIAGRAM
SHOWN ON REVERSE SIDE

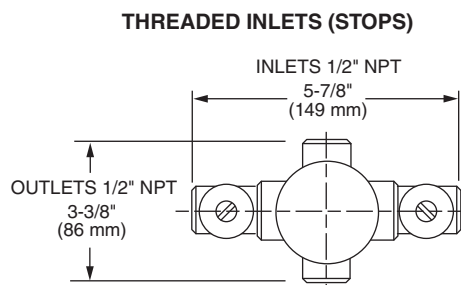
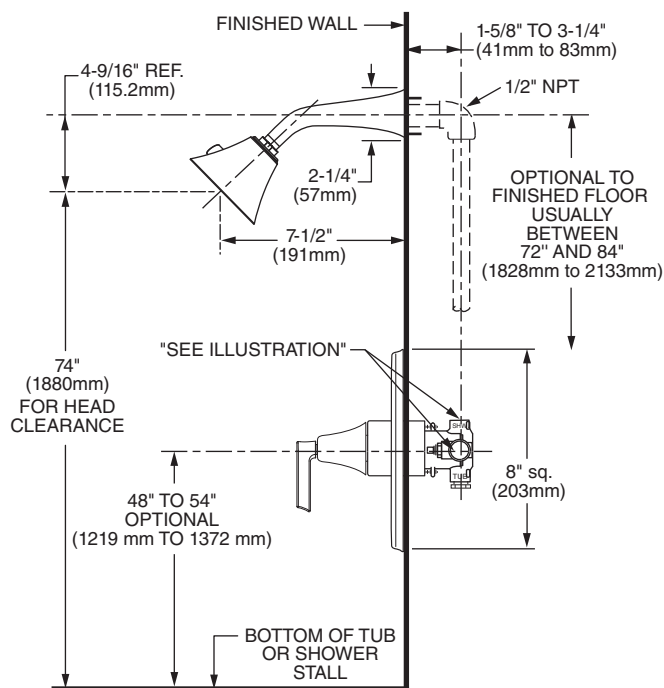
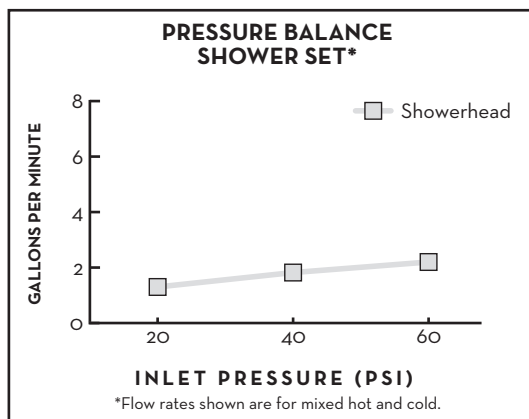
CODES & STANDARDS

These products meet and exceed the following codes and standards:

- ASME A112.18.1
- CSA B125.1
- ASSE 1016



Meets the American Disabilities Act Guidelines and **ANSI A117.1** Requirements for the physically challenged.



IMPORTANT: These measurements are subject to change or cancellation. No responsibility is assumed for use of superseded or voided pages.