



Features:

- Cast brass spout and valves
- Ceramic disc valve cartridge
- Adjustable hot limit safety stop
- Pressure Balance cartridge maintains constant output temperature in response to changes in relative hot and cold supply pressures
- Integral diverter
- Concealed mounting hardware
- Available with Cross or Lever Handle
- Adjustable showerhead

Pictured: 842/400 Tub and Shower Set with Cross Handle

Showerhead Maximum Flow Rate: 2.5 GPM (9.5L/min)

Kit Options	Handle Type	Product Number
Tub & Shower Set	Cross	842/400
Tub & Shower Set	Lever	842/401
PB Diverter Valve Set	Cross	842/140
PB Diverter Valve Set	Lever	842/141



Available Finishes:	Finish Code
Polished Chrome	100
Old Bronze	105
Brushed Nickel	144
Platinum Nickel	150
Antique Nickel	444

Rough & Trim Options	Handle Type	Product Number
Tub & Shower Set Trim Only*	Cross	842/495
Tub & Shower Set Trim Only*	Lever	842/496
PB Diverter Valve Set Trim Only**	Cross	842/545
PB Diverter Valve Set Trim Only**	Lever	842/546
Showerhead Only		842/083
Tub Spout Only		842/017
Rough Only		899/261/191



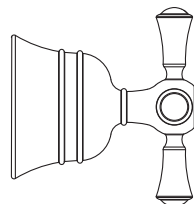
Handle Options:

* Includes Pressure Balance Diverter Valve Trim, Showerhead & Tub Spout

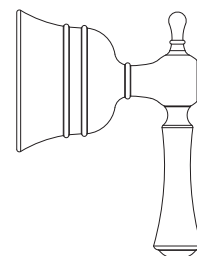
**Pressure Balance Diverter Valve Trim Only

Extension Kits	Product Number
PB Handle Extension Kit	A3195.191
PB Diverter Extension Kit	A3196.191

ROUGH-IN DIAGRAM SHOWN ON REVERSE SIDE



Cross Handle



Lever Handle

CODES & STANDARDS

These products meet and exceed the following codes and standards:

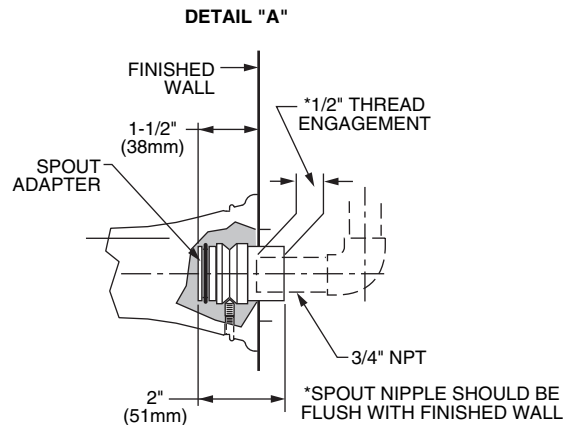
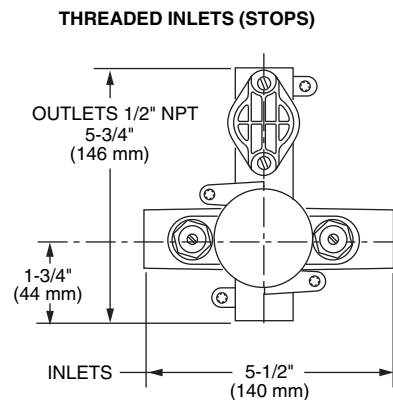
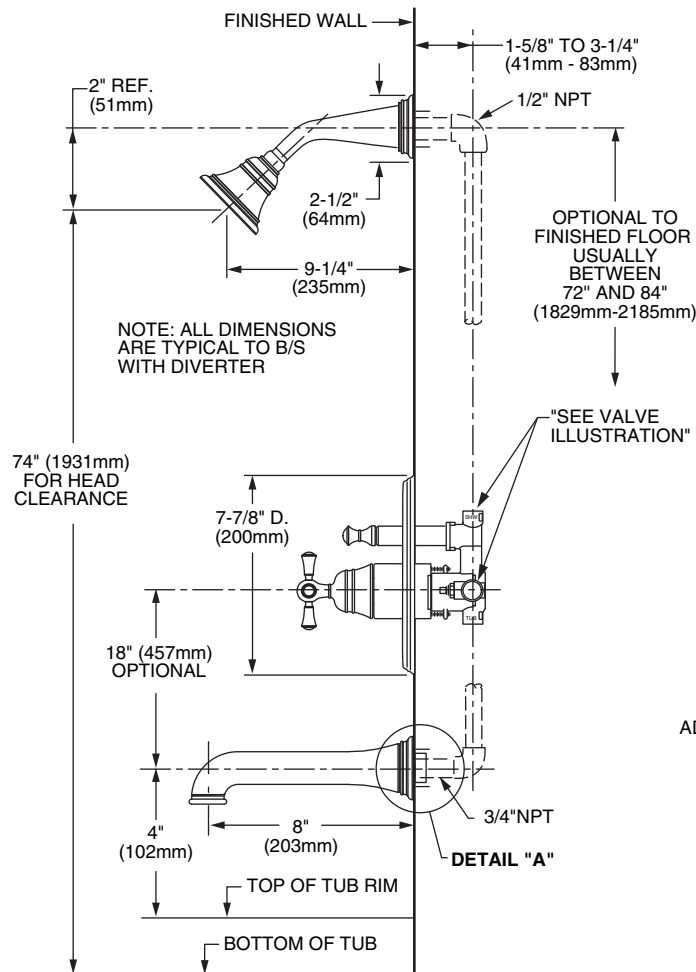
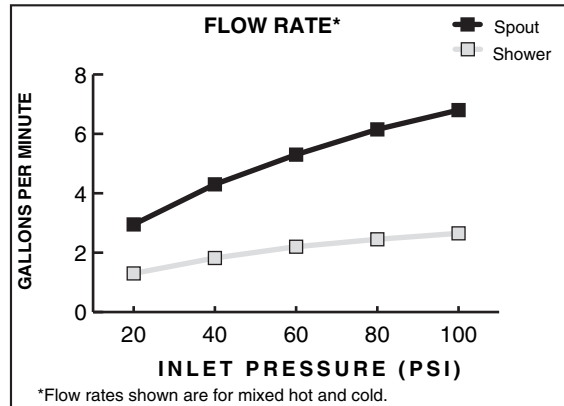
ASME A112.18.1

CSA B125

ASSE1016



Meets the American Disabilities Act Guidelines and **ANSI A117.1** Requirements for the physically challenged.



IMPORTANT: These measurements are subject to change or cancellation. No responsibility is assumed for use of superseded or voided pages.