



### Features:

- Cast brass valves
- Ceramic disc valve cartridge
- Adjustable hot limit safety stop
- Pressure Balance cartridge maintains constant output temperature in response to changes in relative hot and cold supply pressures
- Multi-functional showerhead
- Available with Cross or Lever Handle

Pictured: 888/451 Shower Set with Lever Handle

Showerhead Maximum Flow Rate: 2.5 GPM (9.5L/min)

Kit Options	Handle Type	Product Number
Shower Set	Cross	888/450
Shower Set	Lever	888/451
PB Shower Valve Set	Cross	888/130
PB Shower Valve Set	Lever	888/131



Available Finishes:	Finish Code
Polished Chrome	100
Brushed Nickel	144
Diamond (PVD)	167

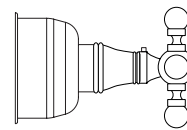
Rough & Trim Options	Handle Type	Product Number
Shower Set Trim Only*	Cross	888/485
Shower Set Trim Only*	Lever	888/486
PB Shower Valve Set Trim Only**	Cross	888/535
PB Shower Valve Set Trim Only**	Lever	888/536
Shower Head Only		860/082
Rough Only		899/260/191



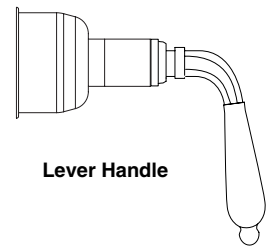
\* Includes Pressure Balance Shower Valve Trim & Shower Head

\*\*Pressure Balance Shower Valve Trim Only

### Handle Options:



Cross Handle



Lever Handle

ROUGH-IN DIAGRAM SHOWN ON REVERSE SIDE

### CODES & STANDARDS

These products meet and exceed the following codes and standards:

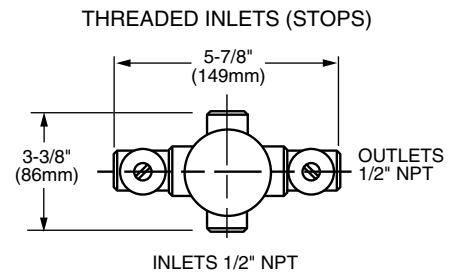
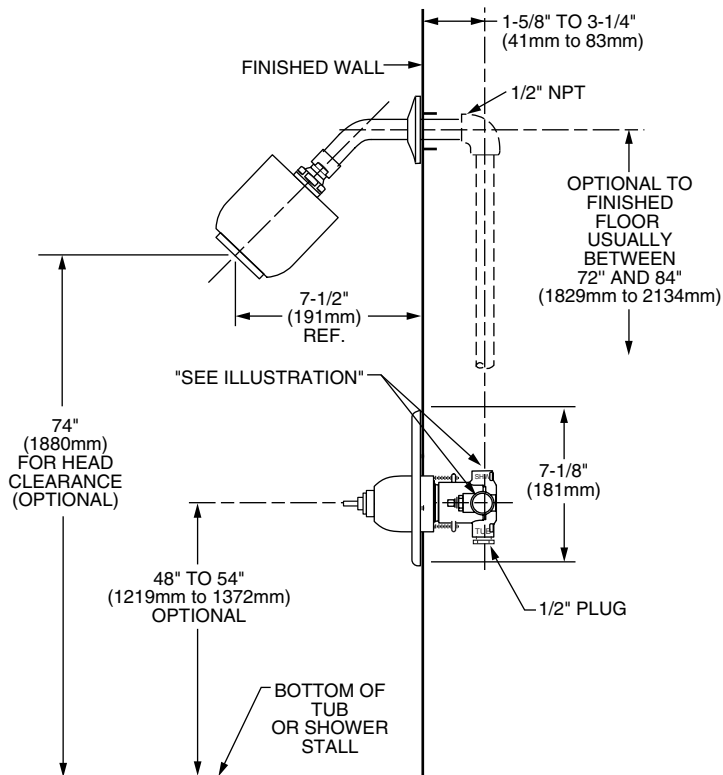
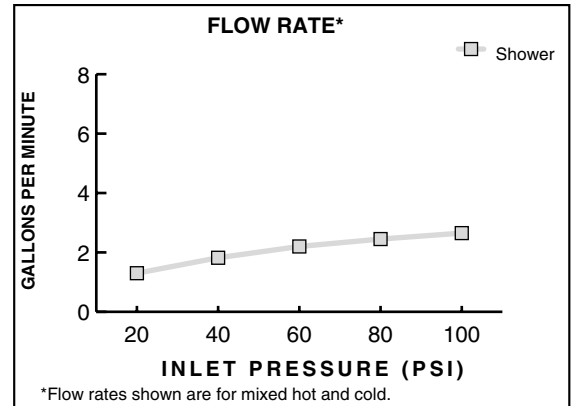
**ASME A112.18.1**

**CSA B125**

**ASSE1016**



Meets the American Disabilities Act Guidelines and **ANSI A117.1** Requirements for the physically challenged.



**IMPORTANT:** These measurements are subject to change or cancellation. No responsibility is assumed for use of superseded or voided pages.