



# Operating Instructions and Parts Manual

## JLP Series Pullers

1/4 Ton – 6 Ton



**WMH TOOL GROUP, Inc.**

2420 Vantage Drive  
Elgin, Illinois 60124  
Ph.: 800-274-6848  
[www.wmhtoolgroup.com](http://www.wmhtoolgroup.com)

**Part No. M-187705**

Revision B1 04/08

Copyright © 2008 WMH Tool Group, Inc.

# Warranty and Service

WMH Tool Group, Inc., warrants every product it sells. If one of our tools needs service or repair, one of our Authorized Service Centers located throughout the United States can give you quick service. In most cases, any of these WMH Tool Group Authorized Service Centers can authorize warranty repair, assist you in obtaining parts, or perform routine maintenance and major repair on your JET® tools. For the name of an Authorized Service Center in your area call 1-800-274-6848.

## MORE INFORMATION

WMH Tool Group is consistently adding new products to the line. For complete, up-to-date product information, check with your local WMH Tool Group distributor, or visit [jettools.com](http://jettools.com).

## WARRANTY

JET products carry a limited warranty which varies in duration based upon the product (MW = Metalworking, WW = Woodworking).

90 DAY WARRANTY	1 YEAR WARRANTY	2 YEAR WARRANTY	5 YEAR WARRANTY	Warranty reverts to 1 Year Warranty if woodworking (WW) products listed below are used for commercial, industrial or educational purposes	LIFE LIFETIME WARRANTY	
Lathe Accessories Machine Accessories Mobile Bases Safety Equipment Specialty Items Vise Accessories	Air Tools- Contractor Air Tools-Industrial Air Tools-Light Industrial Lubrication	Body Repair Kits Bottle Jacks Cable Pullers Cold Saws Hoists-Air Hoists-Electric Metalforming Mill/Drills Milling Machines	MW Bandsaws MW Drill Presses MW Finishing Equipment MW Lathes MW Precision Vises Pallet Trucks Rigging Equip. Service Jacks	Stackers Surface Grinders Tapping Trolleys-Air Trolleys-Electric Web Slings Winches-Electric Beam Clamps Chain Hoist- Manual Lever Hoists Pullers-JCH Models Scissor Lift Tables Screw Jacks Trolleys-Geared	Trolleys-Plain Winches-Manual WW Air Filtration WW Bandsaws WW Buffers WW Drill Presses WW Dust Collectors WW Dust Filters WW Jointers WW Lathes WW Planers WW Sanders WW Shapers WW Tablesaws	Fastening Tools Mechanics Hand Tools Striking Tools Vises (non-precision) Clamps

## WHAT IS COVERED?

This warranty covers any defects in workmanship or materials subject to the exceptions stated below. Cutting tools, abrasives and other consumables are excluded from warranty coverage.

## WHO IS COVERED?

This warranty covers only the initial purchaser of the product.

## WHAT IS THE PERIOD OF COVERAGE?

The general JET warranty lasts for the time period specified in the product literature of each product.

## WHAT IS NOT COVERED?

Five Year Warranties do not cover woodworking (WW) products used for commercial, industrial or educational purposes. Woodworking products with Five Year Warranties that are used for commercial, industrial or education purposes revert to a One Year Warranty. This warranty does not cover defects due directly or indirectly to misuse, abuse, negligence or accidents, normal wear-and-tear, improper repair or alterations, or lack of maintenance.

## HOW TO GET SERVICE

The product or part must be returned for examination, postage prepaid, to a location designated by us. For the name of the location nearest you, please call 1-800-274-6848.

You must provide proof of initial purchase date and an explanation of the complaint must accompany the merchandise. If our inspection discloses a defect, we will repair or replace the product, or refund the purchase price, at our option. We will return the repaired product or replacement at our expense unless it is determined by us that there is no defect, or that the defect resulted from causes not within the scope of our warranty in which case we will, at your direction, dispose of or return the product. In the event you choose to have the product returned, you will be responsible for the shipping and handling costs of the return.

## HOW STATE LAW APPLIES

This warranty gives you specific legal rights; you may also have other rights which vary from state to state.

## LIMITATIONS ON THIS WARRANTY

WMH TOOL GROUP LIMITS ALL IMPLIED WARRANTIES TO THE PERIOD OF THE LIMITED WARRANTY FOR EACH PRODUCT. EXCEPT AS STATED HEREIN, ANY IMPLIED WARRANTIES OR MERCHANTABILITY AND FITNESS ARE EXCLUDED. SOME STATES DO NOT ALLOW LIMITATIONS ON HOW LONG THE IMPLIED WARRANTY LASTS, SO THE ABOVE LIMITATION MAY NOT APPLY TO YOU.

WMH TOOL GROUP SHALL IN NO EVENT BE LIABLE FOR DEATH, INJURIES TO PERSONS OR PROPERTY, OR FOR INCIDENTAL, CONTINGENT, SPECIAL, OR CONSEQUENTIAL DAMAGES ARISING FROM THE USE OF OUR PRODUCTS. SOME STATES DO NOT ALLOW THE EXCLUSION OR LIMITATION OF INCIDENTAL OR CONSEQUENTIAL DAMAGES, SO THE ABOVE LIMITATION OR EXCLUSION MAY NOT APPLY TO YOU.

WMH Tool Group sells through distributors only. The specifications in WMH catalogs are given as general information and are not binding. Members of WMH Tool Group reserve the right to effect at any time, without prior notice, those alterations to parts, fittings, and accessory equipment which they may deem necessary for any reason whatsoever. JET® branded products are not sold in Canada by WMH Tool Group.

# Table of Contents

- Table of Contents ..... 3
- Warning ..... 4
- Specifications ..... 6
  - Load Chain ..... 11
  - Replacement Parts ..... 11
  - JLP-25-5 – Parts Breakdown ..... 12
  - JLP-25 – Parts ..... 13
  - JLP-50 – Parts Breakdown ..... 15
  - JLP-50 – Parts ..... 16
  - JLP-75 thru JLP-600 – Parts Breakdown ..... 18
  - JLP-75 – Parts List ..... 19
  - JLP-150 – Parts List ..... 21
  - JLP-300 & 600 – Parts List ..... 23
  - JLP-600 – Additional Parts ..... 25



# Warnings

1. Read and understand this entire manual before attempting assembly or operation.
2. Read and understand the warnings posted on the machine and in this manual. Failure to comply with all of these warnings may cause serious injury.
3. Replace the warning labels if they become obscured or removed.
4. Do not use this puller for other than its intended use. If used for other purposes, WMH Tool Group disclaims any real or implied warranty and holds itself harmless from any injury that may result from that use.
5. Always wear approved safety glasses/face shields while using this puller. Everyday eyeglasses only have impact resistant lenses; they are not safety glasses.
6. Before operating this puller, remove tie, rings, watches and other jewelry, and roll sleeves up past the elbows. Remove all loose clothing and confine long hair. Non-slip footwear or anti-skid floor strips are recommended. Do **not** wear gloves.
7. This puller is designed and intended for use by properly trained and experienced personnel only. If you are not familiar with the proper and safe operation of a puller, do not use until proper training and knowledge have been obtained.
8. Do not use to lift people or loads over people.
9. Do not exceed the rated capacity of the puller.
10. Do not use a “cheater pipe” to extend the length of the puller handle.
11. Do not strike the handle with a hammer or any other object.
12. Do not use puller chain as a sling. This may cause damage to the chain.
13. Always inspect the puller for damage prior to use. If puller is damaged, do not use until it has been repaired or replaced.
14. Do not use more than one puller to lift or move a load. If this is unavoidable, each puller must have the same capacity as the load to be moved.
15. Never allow chain to “set” over sharp edges. All pulls or lifts must be made with straight chain that is free of obstacles.
16. If the puller lever is difficult to operate, then the load exceeds the capacity of the puller. Select a puller of larger capacity.
17. Do not use a puller if the chain is twisted, kinked or damaged.
18. Do not operate puller unless load is centered between top and bottom hooks.
19. Always take time to study the job to be performed and choose the safest method. Do not place yourself or other people in an unsafe position.
20. Leave all internal maintenance and inspections to a qualified JET repair station.
21. Replace chain with factory replacement chain only. Do not use any other type of chain.
22. Never use the puller if either hook is stretched, deformed, or has a broken or missing safety latch. Always replace the safety latch and/or the hook before placing the puller back in service.
23. Provide for adequate space surrounding work area and non-glare, overhead lighting.
24. Keep the floor around the machine clean and free of scrap material, oil and grease.
25. Keep visitors a safe distance from the work area. **Keep children away.**
26. Give your work undivided attention. Looking around, carrying on a conversation and “horse-play” are careless acts that can result in serious injury.
27. Stand to one side of the load being lifted and make sure no one else is standing underneath when lifting a load. Should a load slip, it will descend at a high rate of speed and can cause serious injuries to anyone standing directly underneath.

# Warnings

28. Do not force a tool or attachment to do a job for which it was not designed. The right tool will do the job better and safer.
29. Use recommended accessories; improper accessories may be hazardous.
30. Maintain tools with care. Follow instructions for lubricating the machine and changing accessories.
31. Understand and follow all procedures as set forth in American National Standards titled *Performance Standard for Manually Lever Operated Chain Hoists*. ANSI/ASME HST-3M. This standard is available through the American Society of Mechanical Engineers, 345 East 47th St., NY, NY 10017

Familiarize yourself with the following safety notices used in this manual:

**CAUTION** This means that if precautions are not heeded, it may result in minor injury and/or possible machine damage.

**WARNING** This means that if precautions are not heeded, it may result in serious injury or possibly even death.

**- - SAVE THESE INSTRUCTIONS - -**

# Specifications

<b>Model Numbers</b>	<b>JLP-25-5</b>
Stock Number .....	187730
Load Chain Diameter .....	4mm
Number of Falls .....	1
Rated Capacity .....	1/4 Ton
Minimum Distance Between Hooks .....	9-1/8"
Standard Lift .....	5'
Lbs. Pull to Lift Capacity .....	57
Lever Length .....	6-1/6"
Net Weight .....	5 lbs.

<b>Model Numbers</b>	<b>JLP-50-5, JLP-50-10</b>
Stock Number .....	187705 (5') 187706 (10')
Load Chain Diameter .....	5mm
Number of Falls .....	1
Rated Capacity .....	1/2 Ton
Minimum Distance Between Hooks .....	11-7/8"
Standard Lift .....	5' (JLP-50-5), 10' (JLP-50-10')
Lbs. Pull to Lift Capacity .....	79
Lever Length .....	11"
Net Weight .....	11 lbs.(5'), 14 lbs.(10')

<b>Model Numbers</b>	<b>JLP-75-5, JLP-75-10, JLP-75-15, JLP-75-20</b>
Stock Number .....	187707 (5') 187708 (10'), 187709 (15'), 187710 (20')
Load Chain Diameter .....	6mm
Number of Falls .....	1
Rated Capacity .....	3/4 Ton
Minimum Distance Between Hooks .....	12-7/16"
Standard Lift .....	5' (JLP-75-5), 10' (JLP-75-10'), 15' (JLP-75-15), 20' (JLP-75-20)
Lbs. Pull to Lift Capacity .....	32
Lever Length .....	11"
Net Weight .....	16 lbs.(5'), 19 lbs.(10'), 21 lbs.(15'), 24 lbs.(20')

<b>Model Numbers</b>	<b>JLP-75WO-5, JLP-75WO-10, JLP-75WO-15</b>
Stock Number .....	187206 (5'), 287808 (10'), 187208 (15')
Load Chain Diameter .....	6mm
Number of Falls .....	1
Rated Capacity .....	3/4 Ton
Minimum Distance Between Hooks .....	12-7/16"
Standard Lift .....	5' (JLP-75WO-5), 10' (JLP-75WO-10), 15' (JLP-75WO-15)
Lbs. Pull to Lift Capacity .....	32
Lever Length .....	11"
Net Weight .....	16 lbs. (5'), 18 lbs. (10'), 21 lbs.(15')

<b>Model Numbers</b>	<b>JLP-150-5, JLP-150-10, JLP-150-15, JLP-150-20</b>
Stock Number .....	187711 (5'), 187712 (10'), 187713 (15'), 187714 (20')
Load Chain Diameter .....	8mm
Number of Falls .....	1
Rated Capacity .....	1-1/2 Ton
Minimum Distance Between Hooks .....	14"
Standard Lift .....	5' (JLP-150-5), 10' (JLP-150-10) 15' (JLP-150-15), 20' (JLP-150-20)
Lbs. Pull to Lift Capacity .....	42
Lever Length .....	16-1/8"
Net Weight .....	26 lbs.(5'), 31 lbs. (10'), 36 lbs.(15'), 41 lbs.(20')

<b>Model Numbers</b>	<b>JLP-150WO-5, JLP-150WO-10, JLP-150WO-15</b>
Stock Number .....	187215 (5'), 287812 (10'), 187217 (15')
Load Chain Diameter .....	8mm
Number of Falls .....	1
Rated Capacity .....	1-1/2 Ton
Minimum Distance Between Hooks .....	14"
Standard Lift .....	5' (JLP-150WO-5), 10' (JLP-150WO-10), 15' (JLP-150WO-15)
Lbs. Pull to Lift Capacity .....	42
Lever Length .....	16-1/8"
Net Weight .....	26 lbs. (5'), 31 lbs. (10'), 36 lbs. (15')

<b>Model Numbers</b>	<b>JLP-300-5, JLP-300-10, JLP-300-15, JLP-300-20</b>
Stock Number .....	187715 (5'), 187716 (10'), 187717 (15'), 187718 (20')
Load Chain Diameter .....	10mm
Number of Falls .....	1
Rated Capacity .....	3 Ton
Minimum Distance Between Hooks .....	19-3/4"
Standard Lift .....	5' (JLP-300-5), 10' (JLP-300-10), 15' (JLP-300-15), 20' (JLP-300-20)
Lbs. Pull to Lift Capacity .....	72
Lever Length .....	16-1/8"
Net Weight .....	44 lbs.(5'), 52 lbs.(10'), 59 lbs. (15'), 67 lbs. (20')

<b>Model Numbers</b>	<b>JLP-300WO-5, JLP-300WO-10, JLP-300WO-15</b>
Stock Number .....	187230 (5'), 287816 (10'), 187232 (15')
Load Chain Diameter .....	10mm
Number of Falls .....	1
Rated Capacity .....	3 Ton
Minimum Distance Between Hooks .....	19-3/4"
Standard Lift .....	5' (JLP-300WO-5), 10' (JLP-300WO-10), 15' (JLP-300WO-15)
Lbs. Pull to Lift Capacity .....	72
Lever Length .....	16-1/8"
Net Weight .....	44 lbs. (5'), 52 lbs. (10'), 59 lbs. (15')

<b>Model Number</b>	<b>JLP-600-5, JLP-600-20</b>
Stock Number .....	187719 (5'), 187720 (20')
Load Chain Diameter .....	10mm
Number of Falls .....	2
Rated Capacity .....	6 Ton
Minimum Distance Between Hooks .....	24-7/16"
Standard Lift .....	5' (JLP-600-5), 20' (JLP-600-20)
Lbs. Pull to Lift Capacity .....	76
Lever Length .....	16-18"
Net Weight .....	66 lbs. (5'), 111 lbs. (20')

The above specifications were current at the time this manual was published, but because of our policy of continuous improvement, WMH Tool Group reserves the right to change specifications at any time and without prior notice, without incurring obligations.

**⚠WARNING** Read and understand the entire contents of this manual before attempting set-up or operation! Failure to comply may cause serious injury.

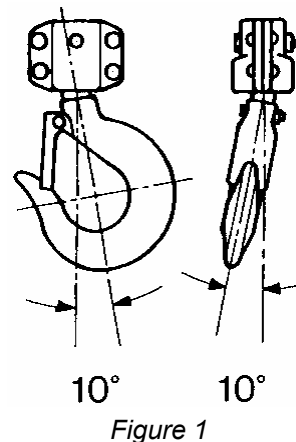
## Prior to Operation

1. Support for the hoist may be hook, clevis pin, trolley, or beam clamp. Whatever method of suspension is chosen, the support components must be rated equal to, or greater than the capacity of the chain hoist.
2. With the lever in the up position, check for a clicking sound when the handle is rotated in a clockwise direction. Do not use if this sound is not present.
3. With the lever in the up position, check free play in handle rotation. Free play is measured by the distance the handle travels before resistance or gearing is felt. If free play has reached 3/4 of a turn, brake discs are worn and should be replaced by a JET authorized repair station.
4. If the puller has not been used for an extended period of time, check for proper operation before putting into service. Apply a light coat of 30W oil to the chain.
5. The brake mechanism must be kept clean and free from dirt, water, and oil. Never allow oil to penetrate the braking mechanism. Always keep your puller clean and store in a clean, dry location.
6. It is not necessary to oil the chain. However, a periodic coating of 30W oil will cause easier operation and prolong the life of the chain.
7. Check the chain for damage. Replace damaged chain before using the puller.

The load chain supplied with your JET puller is designed, manufactured, and tested for proper fit and durability. Over a period of time, the chain may need to be replaced. For your own safety, use factory replacement chain only.

**⚠WARNING** Use of other than factory replacement chain may cause serious injury and/or damage to the puller.

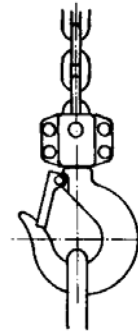
8. The top and bottom hooks on your JET puller are designed to open and warn of an overload. It is important to check top and bottom hooks for proper opening. If the safety latch no longer contacts the hook opening, replace the hook. Never side load the top or bottom hook; this practice is dangerous and could lead to serious injury.
9. If the vertical angle, at the neck, of the bottom or top hook reaches 10°, replace the hook, (Fig. 1).





## Operation

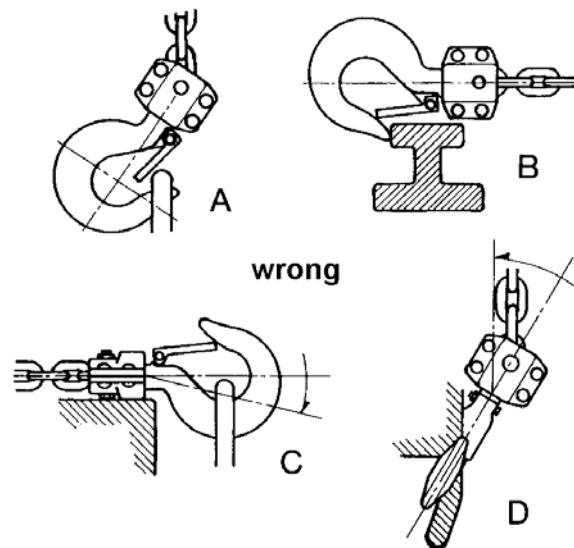
1. Set the top hook securely.
2. Center load on bottom hook correctly, (Fig. 2). Incorrect loading is dangerous to the operator, the puller, and the load.



**correct**

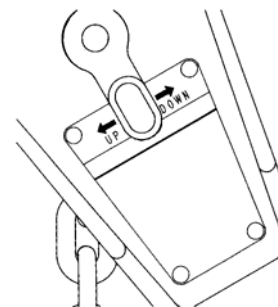
*Figure 2*

Never, load the hook in front of the safety latch (A, Fig. 3), never load the hook tip (B, Fig. 3), never load the hook off the centerline (C, Fig. 3), never load the hook sideways (D, Fig. 3).



*Figure 3*

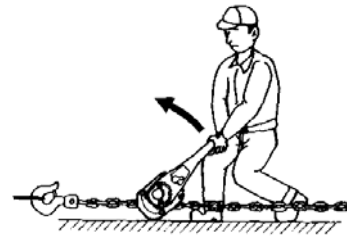
3. Place direction lever on handle in the center neutral position, (Fig. 4) so that chain free-wheels. Note: Chain will only free wheel when there is no load. Take up slack by pulling on loose or free end or by turning hand wheel.
4. Move direction lever to the up position, (Fig. 4). Ratchet handle to raise or pull load. Do not overload the puller.
5. To release or lower load, turn direction lever on handle to the down position, (Fig. 4) and ratchet handle.



*Figure 4*

## Precautions

- ❑ During pulling operations, the operator should stand near the side of the top hook on the opposite side of the lever. If the hand should slip off the lever, the lever will spring back away from the operator, (Fig. 5).



**correct**

Figure 5

- ❑ During lifting operations, do not stand under the load.

- ❑ Do not use an extension on the lever (A, Fig. 6). Do not use a foot to apply pressure to the lever (B, Fig. 6).

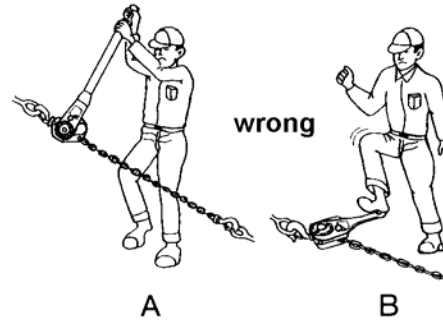


Figure 6

- ❑ Prevent the chain from dragging over sharp edges or corners. These will cause links to weaken, bend, or break, (Fig. 7).

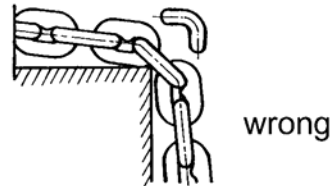


Figure 7

- ❑ When using a wire rope sling, the puller must be applied along a straight line parallel to the surface it is resting on, (Fig. 8).

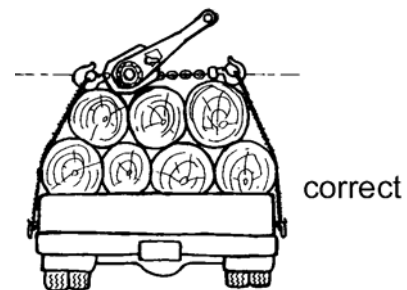


Figure 8

- ❑ When lifting loads, hook the load with slings. Do not use the puller chain as a sling, (Fig. 9).

- ❑ Both ends of a sling or rope must be completely on the inside of the safety latch before pulling or lifting the load. Do not put one end on the inside of the latch and leave the other end on the hook end outside the latch.

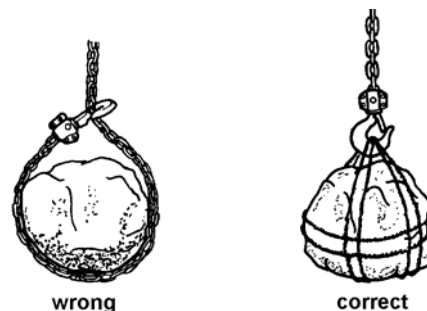


Figure 9

# Load Chain and Hook Limits

## Load Chain

Capacity	5 Links Normal	5 Links Limit
1/4 ton	2.36"	2.419"
1/2 ton	2.95"	3.024"
3/4 ton	3.54"	3.629"
1-1/2 ton	4.72"	4.838"
3 ton	5.91"	6.058"
6 ton	5.91"	6.058"

Carefully inspect the entire load chain. As illustrated in Figure 10, measure five consecutive links with calipers to measure the length. Check every three feet and especially where excessive wear is indicated. Any load chain that shows noticeable deformation or heat influence must be replaced with a new one. **Never** extend load chain by welding a second piece to the original.

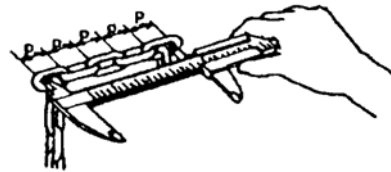


Figure 10

## Hooks (Top & Bottom)

Capacity	Standard Throat Opening	Throat Opening Limit
1/4 ton	0.87"	1.00"
1/2 ton	1.1"	1.27"
3/4 ton	1.18"	1.36"
1-1/2 ton	1.42"	1.63"
3 ton	1.73"	1.99"
6 ton	1.97"	2.27"

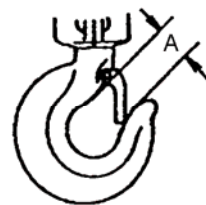


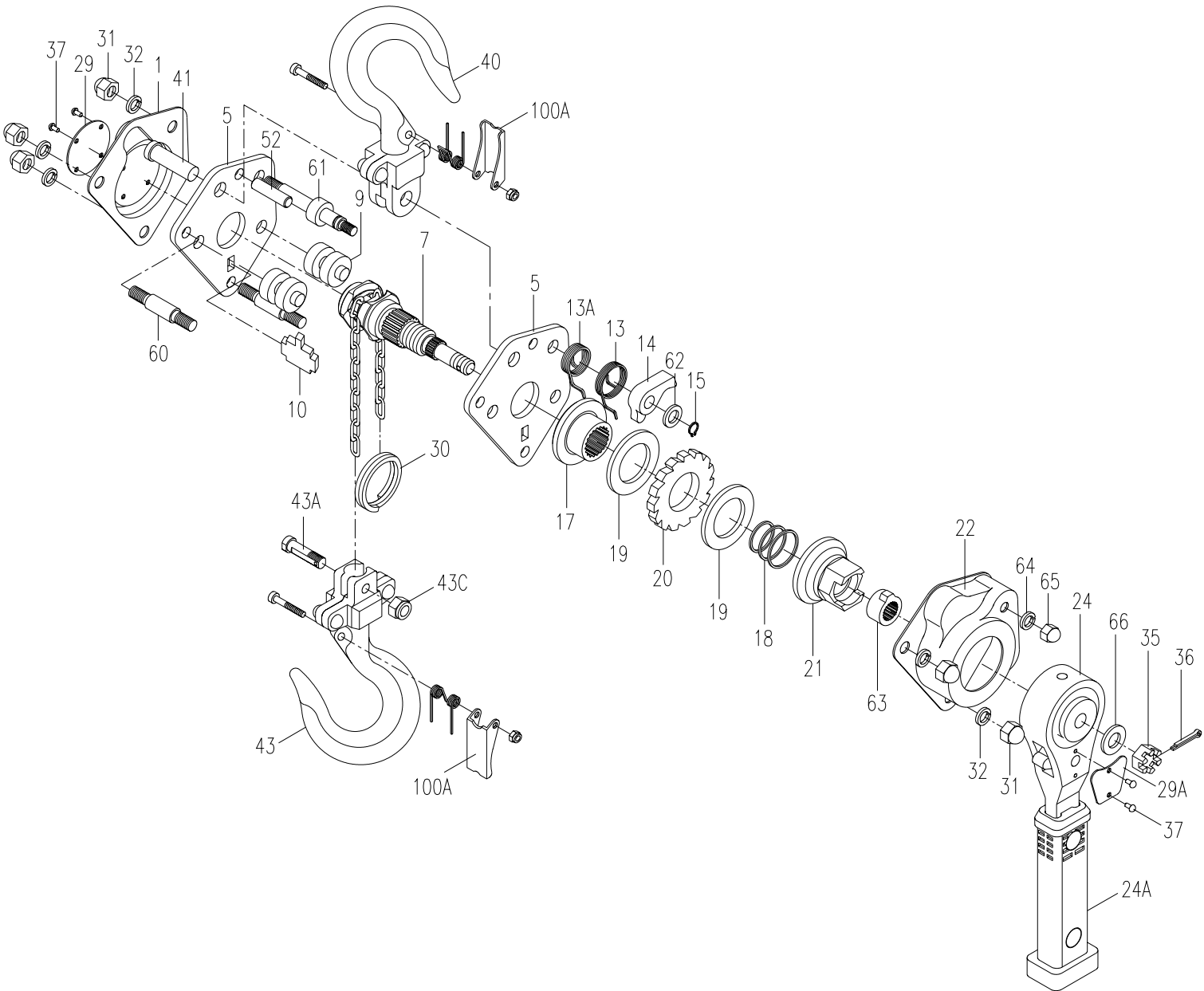
Figure 11

Replace the hook when "A" in Figure 11 is wider than Limit A in the table above. **Never** heat treat the hook or attach anything to the hook by welding.

## Parts

### Replacement Parts

Replacement parts are listed on the following pages. To order parts or reach our service department, call 1-800-274-6848 between 7:30am and 5:30pm (CST), Monday through Friday. Having the Model Number and Serial Number of your machine available when you call will allow us to serve you quickly and accurately.



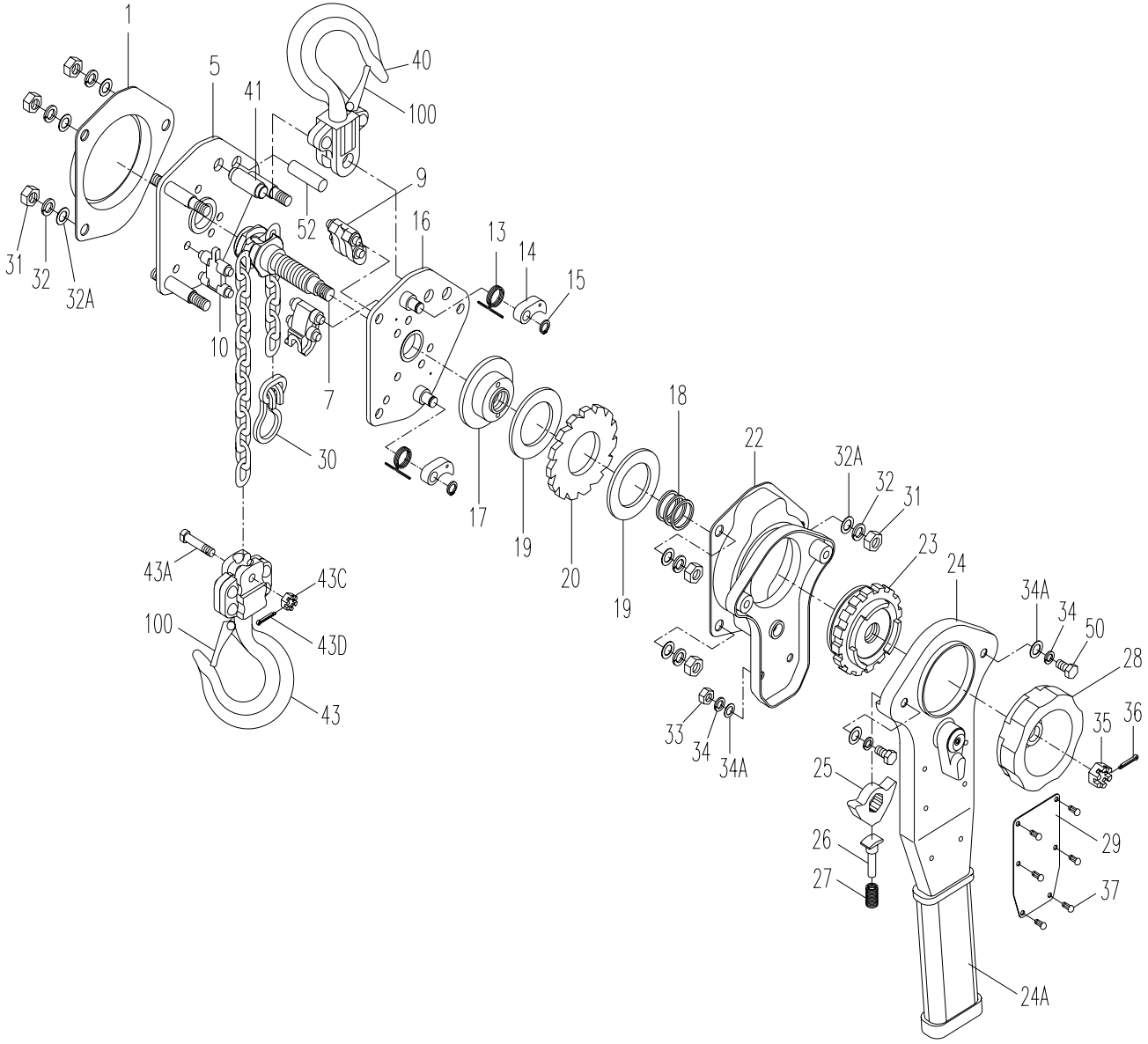
## JLP-25 – Parts

Index No.	Part No.	Description	Size	Qty
1	JLP25-1	Cover		1
5	JLP25-5	Side Plate		2
7	JLP25-7	Load Shaft		1
9	JLP25-9	Guide Roller		2
10	JLP25-10	Stripper		1
13	JLP25-13	Pawl Spring		1
13A	JLP25-13A	Pawl Spring A		1
14	JLP25-14	Pawl		1
15	JLP25-15	Snap Ring	6	1
17	JLP25-17	Disk Hub		1
18	JLP25-18	Spring		1
19	JLP25-19	Friction Disc	35x22x2.5	2
20	JLP25-20	Ratchet Disc		1
21	JLP25-21	Feed Gear		1
22	JLP25-22	Brake Cover		1
24	JLP25-24	Lever Handle Assembly		1
		Handle Lever		1
		Change Over Shaft		1
		Selector Shaft		1
		Steel Bolt	φ5	1
		Spring		1
		Rubber Grip		1
		Fixing Bolt		2
		Indicating Plate		1
		Rivet		2
		Fixing Rivet		2
		Hoop		1
		Spring		1
		Change Over Gear		1
24A	JLP25-24A	Rubber Grip		1
29	JLP25-29	Name Plate		1
29A	JLP25-29A	Indicating Plate		1
30	JLP25-30	Chain Stop		1
31	JLP25-31	Cap Nut	M6	5
32	JLP25-32	Lock Washer	M6	5
35	JLP25-35	Castle Nut	M8	1
36	JLP25-36	Split Pin	2x16	1
37	JLP25-37	Rivet	2x4	6
40	JLP25-40	Top Hook Assembly		1
		Top Hook		1
		Safety Latch		1
		Double Spring		1
		Screw	3x20	1
		Self-lock Nut	M3	1
		Top Hook Block		2
		Rivet	4x14	2
41	JLP25-41	Top Hook Shaft		1
43	JLP25-43	Bottom Hook Assembly		1
		Bottom Hook		1
		Safety Latch		1
		Bottom Hook Block		2
		Rivet	4X14	2
		Double Spring		1
		Screw	3x20	1
		Self-lock Nut	M3	1

**Note:** Parts listed under each assembly are parts that make up that assembly.

## JLP-25 – Parts

Index No.	Part No.	Description	Size	Qty
43A	JLP25-43A	Shaft		1
43C	JLP25-43C	Self-lock Nut	M6	1
52	JLP25-52	Special Pin		1
60	JLP25-60	Stay Bolt A		2
61	JLP25-61	Stay Bolt B		1
62	JLP25-62	Pawl Washer		1
63	JLP25-63	Spline Cam		1
64	JLP25-64	Lock Washer	M5	1
65	JLP25-65	Hex Nut	M5	1
66	JLP25-66	Flat Washer	M8	1
100A	JLP25-100A	Safety Latch Kit		1
		Double Spring		1
		Screw	3x20	1
		Self-lock Nut	M3	1
		Safety Latch		1
	187729	Chain	4mm	



## JLP-50 – Parts

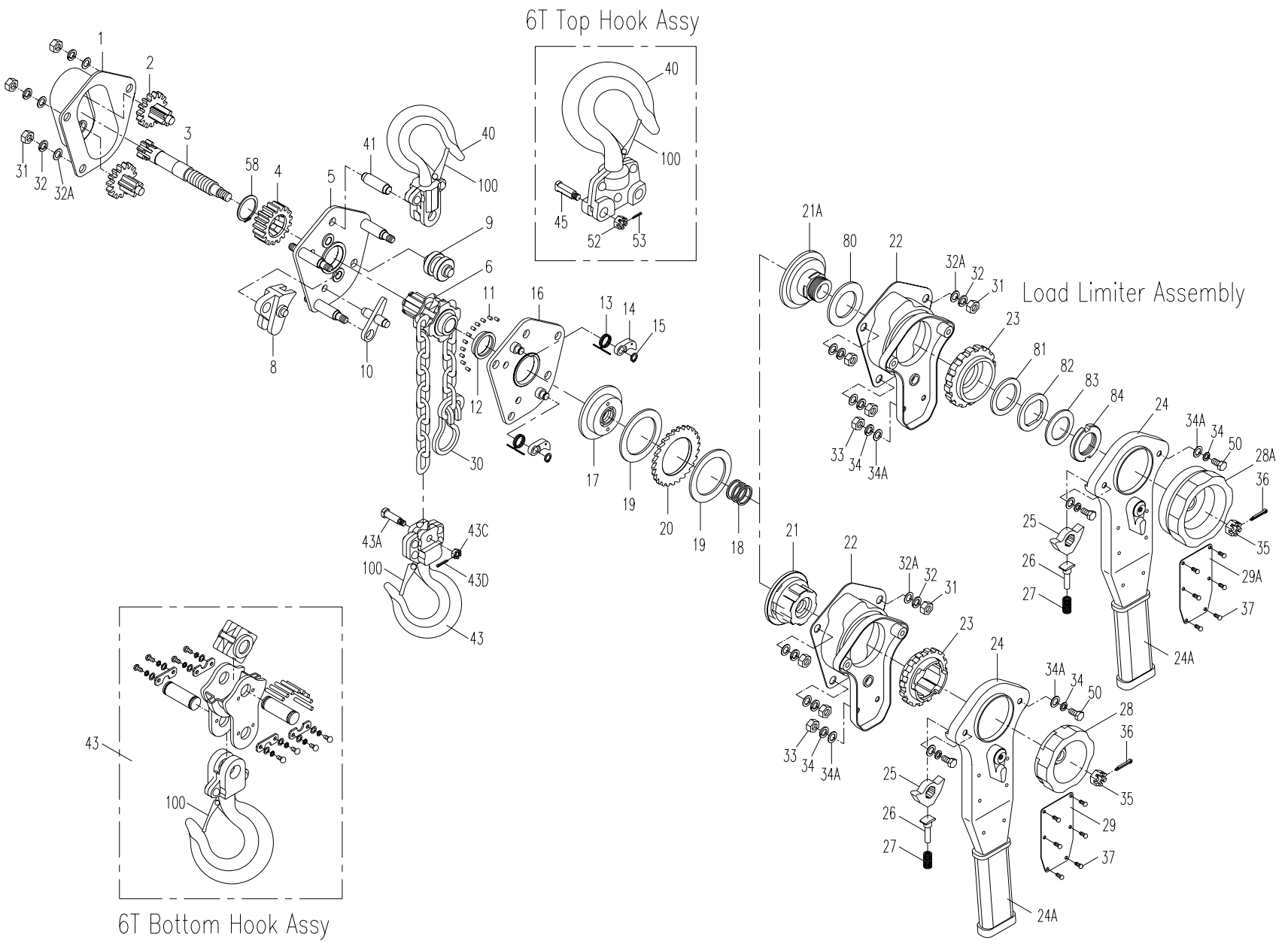
Index No.	Part No.	Description	Size	Qty
1	JLP50-1	Cover		1
5	JLP50-5	Cover Side Plate Assembly (serial #6253 and lower)		1
		Cover Side Plate		1
		Stay Bolt		3
		Race		1
		Guide Plate		1
		Rivet	4x10	2
	JLP50-5A	Cover Side Plate Assembly (serial #8100 and higher)		1
		Cover Side Plate		1
		Stay Bolt		3
		Race		1
7	JLP50-7	Load Shaft		1
9	JLP50-9	Guide Roller (serial #6253 and lower)		2
	JLP50-9A	Guide Block (serial #8001 and higher)		2
10	JLP50-10	Stripper (serial #6253 and lower)		1
	JLP50-10A	Stripper (serial #8001 and higher)		1
13	JLP75-13	Pawl Spring (1/2, 3/4T)		2
14	JLP50-14	Pawl		2
15	JLP75-15	Snap Ring (1/2, 3/4T)	8	2
16	JLP50-16	Lever Side Plate Assembly (serial #6253 and lower)		1
		Lever Side Plate		1
		Race		1
		Pawl Pin		2
	JLP50-16A	Lever Side Plate Assembly (serial #8001 and higher)		1
		Lever Side Plate		1
		Race		1
		Pawl Pin		2
17	JLP50-17	Disc Hub		1
18	JLP75-18	Spring (1/2, 3/4, 1-1/2T)		1
19	JLP50-19	Friction Disc		2
20	JLP50-20	Ratchet Disc		1
22	JLP50-22	Brake Cover Assembly		1
		Brake Cover		1
		Handle Case		1
		Nut		2
		Bushing		1
23	JLP50-23	Change Over Gear		1
24	JLP75-24	Lever Handle Assembly (1/2, 3/4T)		1
		Lever Handle		1
		Selector Lever		1
		Change Over Shaft		1
		Cover		1
		Rivet	3x16	1
		Bolt		2
		Spring Seat		1
		Bushing		1
		Rubber Grip		1
24A	JLP75-24A	Rubber Grip		1
25	JLP75-25	Change Over Pawl (1/2, 3/4T)		1
26	JLP75-26	Spring Shaft (1/2, 3/4T)		1
27	JLP75-27	Spring (1/2, 3/4T)		1
28	JLP75-28	Hand Wheel (1/2, 3/4T)		1
29	JLP50-29	Name Plate		1
30	JLP75-30	Chain Stop		1
31	JLP75-31	Hex Nut (1/2, 3/4T)	M8	6
32	JLP75-32	Lock Washer (1/2, 3/4T)	M8	6
32A	JLP75-32A	Flat Washer (1/2, 3/4T)	M8	6



## JLP-50 – Parts

Index No.	Part No.	Description	Size	Qty
33	JLP75-33	Hex Nut (1/2, 3/4T)	M6	2
34	JLP75-34	Lock Washer (1/2, 3/4T)	M6	2
34A	JLP75-34A	Flat Washer (1/2, 3/4T)	M6	4
35	JLP75-35	Castle Nut (1/2, 3/4T)	M10	1
36	JLP75-36	Split Pin (1/2, 3/4T)	2.5x20	1
37	JLP75-37	Rivet (1/2-6T)	2.5x6	6
38	JLP50-38	Lock Washer	M5	2
39	JLP50-39	Screw	M5x8	2
40	JLP50-40	Top Hook Assembly		1
		Top Hook		1
		Safety Latch		1
		Double Spring		1
		Rivet	3x16	1
		Top Hook Block		2
		Rivet	5x20	2
41	JLP50-41	Top Hook Shaft		1
43	JLP50-43	Bottom Hook Assembly		1
		Bottom Hook		1
		Safety Latch		1
		Double Spring		1
		Rivet	3x16	1
		Bottom Hook Block		2
		Rivet	5x20	4
43A	JLP50-43A	Shaft		1
43C	JLP50-43C	Nut	M6	1
43D	JLP50-43D	Pin	1.6x14	1
50	JLP75-50	Screw (1/2, 3/4T)	M6x12	2
52	JLP50-52	Special Pin		1
100	JLP50-100	Safety Latch Kit		1
		Safety Latch		1
		Double Spring		1
		Rivet	3x16	1
	187721	Chain	5mm	1

**Note:** Top and bottom hooks are sold as an assembly only.



## JLP-75 – Parts List

Index No.	Part No.	Description	Size	Qty
1	JLP75-1	Gear Case Assembly		1
		Gear Case		1
		Bushing		2
		Cover Plate		1
		Rivet	2x6	2
2	JLP75-2	Spur Gear Assembly		2
		Spur Gear		2
		Pinion Gear		2
3	JLP75-3	Drive Shaft		1
4	JLP75-4	Load Gear		1
5	JLP75-5	Gear Side Plate Assembly		1
		Gear Side Plate		1
		Stay Bolt		3
		Bushing		2
		Race "A"		1
6	JLP75-6	Load Sheave		1
8	JLP75-8	Guide Block		1
9	JLP75-9	Guide Roller		1
10	JLP75-10	Stripper		1
11	JLP75-11	Roller Kit (34 rollers)	3x5	1
12	JLP75-12	Bearing Race		1
13	JLP75-13	Pawl Spring (1/2, 3/4T)		2
14	JLP75-14	Pawl		2
15	JLP75-15	Snap Ring (1/2, 3/4T)	8	2
16	JLP75-16	Lever Side Plate Assembly		1
		Lever Side Plate		1
		Race "B"		1
		Pawl Pin		2
17	JLP75-17	Disc Hub		1
18	JLP75-18	Spring (1/2, 3/4, 1-1/2T)		1
19	JLP75-19	Friction Disc		2
20	JLP75-20	Ratchet Disc		1
21	JLP75-21	Feed Gear		1
21A	JTP75-21	Feed Gear		1
22	JLP75-22	Brake Cover Assembly		1
		Brake Cover		1
		Handle Case		1
		Nut		2
		Bushing		1
23	JLP75-23	Change Over Gear		1
23A	JTP75-23	Change Over Gear		1
24	JLP75-24	Lever Handle Assembly (1/2, 3/4T)		1
		Lever Handle		1
		Selector Lever		1
		Change Over Shaft		1
		Cover		1
		Rivet	3x12	1
		Bolt		2
		Spring Seat		1
		Bushing		1
		Rubber Grip		1
24A	JLP75-24A	Rubber Grip		1
25	JLP75-25	Change Over Pawl (1/2, 3/4T)		1
26	JLP75-26	Spring Shaft (1/2, 3/4T)		1
27	JLP75-27	Spring (1/2, 3/4T)		1

## JLP-75 – Parts List

Index No.	Part No.	Description	Size	Qty
28	JLP75-28	Hand Wheel (1/2, 3/4T)		1
28A	JTP75-28	Hand Wheel (1/2, 3/4T)		1
29	JLP75-29	Name Plate		1
29A	JTP75-29	Name Plate		1
30	JLP75-30	Chain Stop (1/2, 3/4T)		1
31	JLP75-31	Hex Nut (1/2, 3/4T)	M8	6
32	JLP75-32	Lock Washer (1/2, 3/4T)	M8	6
32A	JLP75-32A	Flat Washer	M8	6
33	JLP75-33	Hex Nut (1/2, 3/4T)	M6	2
34	JLP75-34	Lock Washer (1/2, 3/4T)	M6	2
34A	JLP75-34A	Flat Washer (1/2, 3/4T)	M6	4
35	JLP75-35	Castle Nut (1/2, 3/4T)	M10	1
36	JLP75-36	Split Pin (1/2, 3/4T)	2.5x20	1
37	JLP75-37	Rivet (1/2-6T)	2.5x6	6
40	JLP75-40	Top Hook Assembly		1
		Top Hook		1
		Safety Latch		1
		Double Spring		1
		Rivet	3x16	1
		Top Hook Block		2
		Rivet	5x20	2
41	JLP75-41	Top Hook Shaft		1
43	JLP75-43	Bottom Hook Assembly		1
		Bottom Hook		1
		Safety Latch		1
		Double Spring		1
		Rivet	3x16	1
		Bottom Hook Block		2
		Rivet	5x20	4
43A	JLP75-43A	Shaft		1
43C	JLP75-43C	Nut	M6	1
43D	JLP75-43D	Pin	1.6x14	1
50	JLP75-50	Screw (1/2, 3/4T)	M6x12	2
58	JLP75-58	Snap Ring	28	1
80	JTP75-80	Overload Limiting Plate A		1
81	JTP75-81	Overload Limiting Plate B		1
82	JTP75-82	Pressure Plate		1
83	JTP75-83	Dish Spring		1
84	JTP75-84	Adjusting Nut		1
100	JLP75-100	Safety Latch Kit		1
		Safety Latch		1
		Double Spring		1
		Rivet	3x16	1
	187722	Chain	6mm	1

**Note:** Top and bottom hooks are sold as an assembly only.

## JLP-150 – Parts List

Index No.	Part No.	Description	Size	Qty
1	JLP150-1	Gear Case Assembly		1
		Gear Case		1
		Bushing		2
		Cover Plate		1
		Rivet	4x6	2
2	JLP150-2	Spur Gear Assembly		2
		Spur Gear		2
		Pinion Gear		2
3	JLP150-3	Drive Shaft		1
4	JLP150-4	Load Gear		1
5	JLP150-5	Gear Side Plate Assembly		1
		Gear Side Plate		1
		Stay Bolt		3
		Bushing		2
		Race "A"		1
6	JLP150-6	Load Sheave		1
8	JLP150-8	Guide Block		1
9	JLP150-9	Guide Roller		1
10	JLP150-10	Stripper		1
11	JLP150-11	Roller Kit (37 rollers)	3x6	1
12	JLP150-12	Bearing Race		1
13	JLP150-13	Pawl Spring (1-1/2, 3, 6T)		2
14	JLP150-14	Pawl (1-1/2, 3, 6T)		2
15	JLP150-15	Snap Ring (1-1/2, 3, 6T)		2
16	JLP150-16	Lever Side Plate Assembly		1
		Lever Side Plate		1
		Race "B"		1
		Pawl Pin		2
17	JLP150-17	Disc Hub		1
18	JLP75-18	Spring (1/2, 3/4, 1-1/2T)		1
19	JLP150-19	Friction Disc		2
20	JLP150-20	Ratchet Disc		1
21	JLP150-21	Feed Gear		1
21A	JTP150-21	Feed Gear		1
22	JLP150-22	Brake Cover Assembly		1
		Brake Cover		1
		Handle Case		1
		Nut		2
		Bushing		1
23	JLP150-23	Change Over Gear (1-1/2, 3, 6T)		1
23A	JTP150-23	Change Over Gear (1-1/2, 3, 6T)		1
24	JLP150-24	Lever Handle Assembly (1-1/2, 3, 6T)		1
		Lever Handle		1
		Selector Lever		1
		Change Over Shaft		1
		Cover		1
		Rivet	3x12	1
		Screw		2
		Spring Seat		1
		Bushing		1
		Rubber Grip		1
24A	JLP150-24A	Rubber Grip		1
25	JLP150-25	Change Over Pawl (1-1/2, 3, 6T)		1
26	JLP150-26	Spring Shaft (1-1/2, 3, 6T)		1
27	JLP150-27	Spring (1-1/2, 3, 6T)		1
28	JLP150-28	Hand Wheel (1-1/2, 3, 6T)		1
28A	JTP150-28	Hand Wheel (1-1/2, 3, 6T)		1

## JLP-150 – Parts List

Index No.	Part No.	Description	Size	Qty
29	JLP150-29	Name Plate		1
29A	JTP150-29	Name Plate		1
30	JLP150-30	Chain Stop		1
31	JLP150-31	Hex Nut	M10	6
32	JLP150-32	Lock Washer	10	6
32A	JLP150-32A	Flat Washer	10	6
33	JLP150-33	Hex Nut (1-1/2, 3, 6T)	M8	2
34	JLP150-34	Lock Washer (1-1/2, 3, 6T)	8	2
34A	JLP150-34A	Flat Washer (1-1/2, 3, 6T)	8	4
35	JLP150-35	Castle Nut (1-1/2, 3, 6T)	M12	1
36	JLP150-36	Split Pin (1-1/2, 3, 6T)	2.5x25	1
37	JLP75-37	Rivet (1/2-6T)	2.5x6	6
40	JLP150-40	Top Hook Assembly		1
		Top Hook		1
		Safety Latch		1
		Double Spring		1
		Rivet	4x18	1
		Top Hook Block		2
		Rivet	6x24	2
41	JLP150-41	Top Hook Shaft		1
43	JLP150-43	Bottom Hook Assembly		1
		Bottom Hook		1
		Safety Latch		1
		Double Spring		1
		Rivet	4x18	1
		Bottom Hook Block		2
		Rivet	6x24	4
43A	JLP150-43A	Shaft		1
43C	JLP150-43C	Nut	M8	1
43D	JLP150-43D	Pin	2x16	1
50	JLP150-50	Screw (1-1/2, 3, 6T)	M8x16	2
51	JLP150-51	Washer (1-1/2, 3, 6T)	M8	2
58	JLP150-58	Snap Ring	34	1
80	JTP150-80	Overload Limiting Plate A (1-1/2, 3T)		1
81	JTP150-81	Overload Limiting Plate B (1-1/2, 3T)		1
82	JTP150-82	Pressure Plate (1-1/2, 3T)		1
83	JTP150-83	Dish Spring		1
84	JTP150-84	Adjusting Nut (1-1/2, 3T)		1
10	JLP150-100	Safety Latch Kit		1
		Safety Latch		1
		Double Spring		1
		Rivet	4x18	1
	187723	Chain	8mm	1

**Note:** Top and bottom hooks are sold as an assembly only.

## JLP-300 & 600 – Parts List

Index No.	Part No.	Description	Size	Qty
1	JLP300-1	Gear Case Assembly (3, 6T)		1
		Gear Case		1
		Bushing		2
		Cover		1
		Rivet	4x6	2
2	JLP300-2	Spur Gear Assembly (3, 6T)		2
		Spur Gear		2
		Pinion Gear		2
3	JLP300-3	Drive Shaft (3, 6T)		1
4	JLP300-4	Load Gear (3, 6T)		1
5	JLP300-5	Gear Side Plate Assembly (3, 6T)		1
		Gear Side Plate		1
		Stay Bolt		3
		Bushing		2
		Race "A"		1
6	JLP300-6	Load Sheave (3, 6T)		1
8	JLP800-8	Guide Block (3, 6T)		1
9	JLP300-9	Guide Roller (3, 6T)		1
10	JLP300-10	Stripper (3, 6T)		1
11	JLP300-11	Roller Kit (24 rollers) (3, 6T)	5x6	1
12	JLP300-12	Bearing Race (3, 6T)		1
13	JLP150-13	Pawl Spring (1-1/2, 3, 6T)		2
14	JLP150-14	Pawl (1-1/2, 3, 6T)		2
15	JLP150-15	Snap Ring (1-1/2, 3, 6T)		2
16	JLP300-16	Lever Side Plate Assembly (3, 6T)		1
		Lever Side Plate		1
		Race "B"		1
		Pawl Pin		2
17	JLP300-17	Disc Hub (3, 6T)		1
18	JLP300-18	Spring (3, 6T)		1
19	JLP300-19	Friction Disc (3, 6T)		2
20	JLP300-20	Ratchet Disc (3, 6T)		1
21	JLP300-21	Feed Gear (3, 6T)		1
21A	JTP300-21	Feed Gear (3T)		1
22	JLP300-22	Brake Cover Assembly (3, 6T)		1
		Brake Cover		1
		Handle Case		1
		Nut		2
		Bushing		1
23	JLP150-23	Change Over Gear (1-1/2, 3, 6T)		1
23A	JTP300-23	Change Over Gear (1-1/2, 3T)		1
24	JLP150-24	Lever Handle Assembly (1-1/2, 3, 6T)		1
		Lever Handle		1
		Selector Lever		1
		Change Over Shaft		1
		Cover		1
		Rivet	3x12	1
		Bolt		2
		Spring Seat		1
		Bushing		1
		Rubber Grip		1
24A	JLP150-24A	Rubber Grip		1
25	JLP150-25	Change Over Pawl (1-1/2, 3, 6T)		1
26	JLP150-26	Spring Shaft (1-1/2, 3, 6T)		1
27	JLP150-27	Spring (1-1/2, 3, 6T)		1
28	JLP150-28	Hand Wheel (1-1/2, 3, 6T)		1
28A	JTP300-28	Hand Wheel (1-1/2, 3T)		1

## JLP-300 & 600 – Parts List

Index No.	Part No.	Description	Size	Qty
29	JLP300-29	Name Plate		1
29A	JLP300WO-29	Name Plate (3T)		1
30	JLP300-30	Chain Stop (3, 6T)		1
31	JLP300-31	Hex Nut (3, 6T)	M12	6
32	JLP300-32	Lock Washer (3, 6T)	M12	6
32A	JPP300-32A	Flat Washer (3, 6T)	M12	6
33	JLP150-33	Hex Nut (1-1/2, 3, 6T)	M8	2
34	JLP150-34	Lock Washer (1-1/2, 3, 6T)	M8	2
34A	JLP150-34A	Flat Washer (1-1/2, 3, 6T)	M8	4
35	JLP150-35	Castle Nut (1-1/2, 3, 6T)	M12	1
36	JLP150-36	Split Pin (1-1/2, 3, 6T)	2.5x25	1
37	JLP75-37	Rivet (1/2-6T)	2.5x6	6
40	JLP300-40	Top Hook Assembly (3T)		1
		Top Hook		1
		Safety Latch		1
		Double Spring		1
		Rivet	4x22	1
		Top Hook Block		2
		Rivet	8x28	2
41	JLP300-41	Top Hook Shaft (3, 6T)		1
43	JLP300-43	Bottom Hook Assembly (3T)		1
		Bottom Hook		1
		Safety Latch		1
		Double Spring		1
		Rivet	4x22	1
		Bottom Hook Block		2
		Rivet	8x28	4
43A	JLP300-43A	Shaft		1
43C	JLP300-43C	Nut	M12	1
43D	JLP300-43D	Pin	2.5x25	1
50	JLP150-50	Screw (1-1/2, 3, 6T)	M8x16	2
51	JLP150-51	Washer (1-1/2, 3, 6T)	M8	2
58	JLP300-58	Snap Ring (3, 6T)	45	1
80	JTP150-80	Overload Limiting Plate A (1-1/2, 3T)		1
81	JTP150-81	Overload Limiting Plate B (1-1/2, 3T)		1
82	JTP150-82	Pressure Plate (1-1/2, 3T)		1
83	JTP150-83	Dish Spring (3T)		1
84	JTP150-84	Adjusting Nut (1-1/2, 3T)		1
100	JLP300-100	Safety Latch Kit		1
		Safety Latch		1
		Double Spring		1
		Rivet		1
	187724	Chain	10mm	1

**Note:** Top and bottom hooks are sold as an assembly only.



## JLP-600 – Additional Parts

Index No.	Part No.	Description	Size	Qty
29	JLP600-29	Name Plate (6T)		1
40	JLP600-40	Top Hook Assembly (6T)		1
		Top Hook		1
		Safety Latch		1
		Double Spring		1
		Rivet	4x22	1
		Top Hook Block "A"		1
		Top Hook Block "B"		1
		Rivet	8x28	3
43	JLP600-43	Bottom Hook Assembly (6T)		1
		Bottom Hook		1
		Bottom Hook Collar		2
		Rivet	8x28	2
		Safety Latch		1
		Double Spring		1
		Rivet	4x22	1
		Bottom Hook Block		1
		Bottom Hook Sheave		1
		Needle Roller		29
		Sheave Axle		2
		Fixed Plate		1
		Screw	M6x10	8
		Lock Washer	M6	8
45	JLP600-45	Chain Suspension Pin (6T)		1
52	JLP600-52	Castle Nut		1
53	JLP600-53	Split Pin		11
100	JLP600-100	Safety Latch Kit (not shown-6T)		1
		Safety Latch		1
		Double Spring		1
		Rivet	4x22	1

**Note:** Top and bottom hooks are sold as an assembly only.

# Notes

# Notes



**WMH Tool Group, Inc.**  
2420 Vantage Drive  
Elgin, Illinois 60124  
Phone: 800-274-6848  
[www.wmhtoolgroup.com](http://www.wmhtoolgroup.com)