

**BEFORE YOU BEGIN**

**NOTES**

- Shut off the main water supply.
- Inspect the supply tubing for damage. Replace as necessary.
- Observe local plumbing codes.
- If possible, install this faucet before installing the lavatory.
- Kohler Co. reserves the right to make revisions in the design of faucets without notice, as specified in the Price Book.

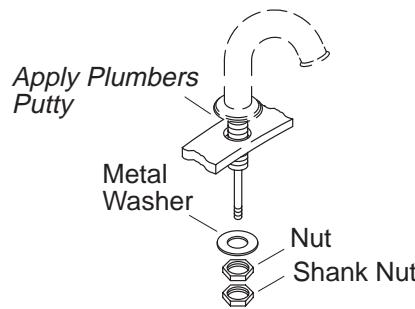
**TOOLS AND MATERIALS RECOMMENDED**

- Adjustable wrench
- Thread sealant
- Plumbers putty
- Hacksaw or tubing cutter
- Pipe wrench
- Channel lock pliers

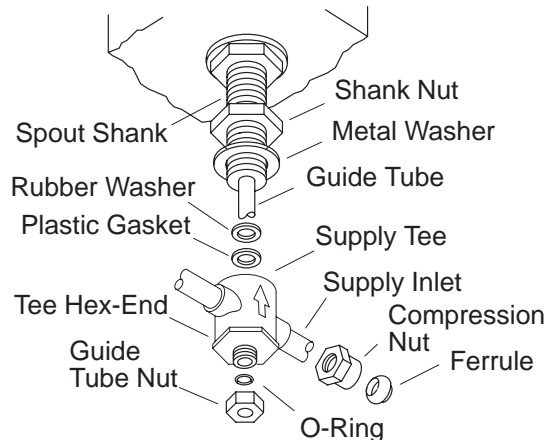
**INSTALLATION**

**FAUCET**

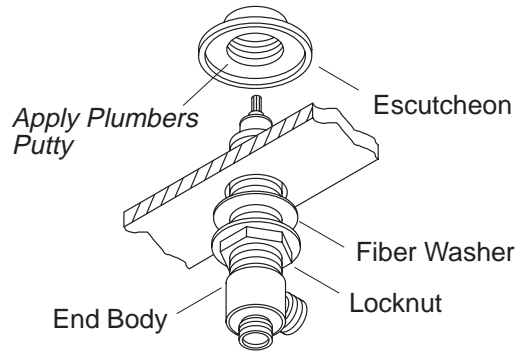
- Apply a ring of plumbers putty or other sealant to the underside of the spout according to the putty manufacturer's instructions. Fit the spout through the center lavatory hole.
- Install the metal washer and nut, and securely wrench tighten the nut.
- Remove any excess putty or sealant.
- Thread the shank nut about halfway up the spout shank.



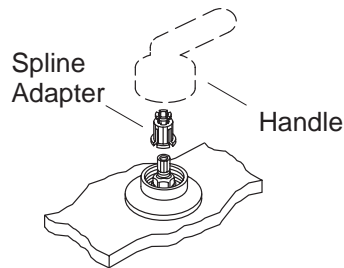
- Remove and retain the guide tube nut and O-ring from the supply tee.
- Insert the plastic gasket and rubber washer into the supply tee. Slide the metal washer on the spout shank, and thread the supply tee to the spout shank until hand tight.
- Align the supply arms to the sides, and carefully wrench tighten the hex end of the supply tee.
- Thread the shank nut down against the supply tee, and securely wrench tighten.
- Slide a compression nut and ferrule onto each supply arm.
- Slip the O-ring over the guide tube, and wrench tighten the guide tube nut to the supply tee.



- Thread a locknut all the way onto each end body so the flat surface of the locknut faces the top of the end body.
- Slide a fiber washer on each end body, and insert the end bodies into the side lavatory holes from the bottom of the lavatory. Make sure you install the end body marked with blue tape (cold) in the right-hand hole (as viewed from the front of the lavatory).
- Apply a ring of plumbers putty or other sealant around the underside of each escutcheon according to the putty manufacturer's instructions. Thread the escutcheons to the end bodies until hand tight.
- Align the end bodies so the supply arms fit evenly into the end body supply outlets.
- Hold the end bodies firmly in place, and securely wrench tighten the locknuts.
- Remove any excess putty or sealant.



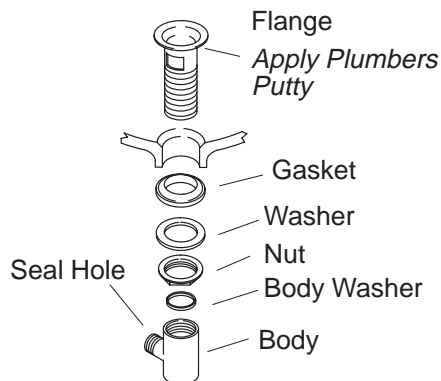
- Turn the end body valve stems fully clockwise to close the valves.
- Install a spline adapter and handle to each valve stem. Secure each handle with either a standard screw and cap, or a vandal-resistant screw with a color-coded cap.



## DETERMINE YOUR DRAIN STYLE AND FOLLOW THE APPROPRIATE INSTALLATION STEPS.

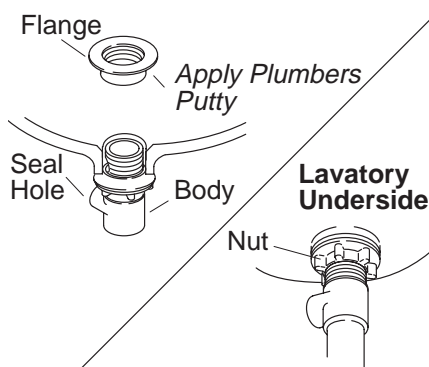
### DRAIN (CP AND PB FINISHES)

- Remove the protective seal from the flange.
- Apply a 1/2" diameter ring of plumbers putty or other sealant around the underside of the flange according to the putty manufacturer's instructions. Insert the flange into the lavatory drain hole.
- Assemble the gasket (tapered side up) and washer to the flange, and partially thread the nut to the flange. **Do not** fully tighten the nut at this time.
- Install the body washer and body to the flange, and wrench tighten.
- Position the body so the seal hole is facing toward the back of the lavatory.
- Handtighten the nut.
- Remove any excess putty or sealant.

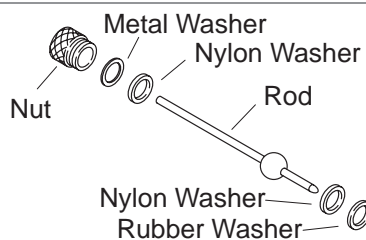


### DRAIN (OTHER FINISHES)

- Remove the flange from the body.
- Thread the nut completely onto the body.
- Apply a 1/2" diameter ring of plumbers putty or other sealant to the underside of the drain flange according to the putty manufacturer's instructions.
- Insert the drain body up into the underside of the lavatory drain hole.
- Position the body so the seal hole is facing toward the back of the lavatory.
- Thread the flange onto the drain body from the topside of the lavatory.
- Securely handtighten the nut from the underside of the lavatory.
- Remove any excess putty or sealant.

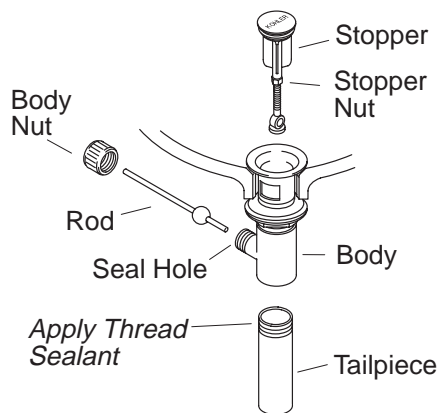


- Assemble the nylon washer, metal washer, and nut onto the long end of the rod.
- Assemble the nylon washer and rubber washer onto the short end of the rod.

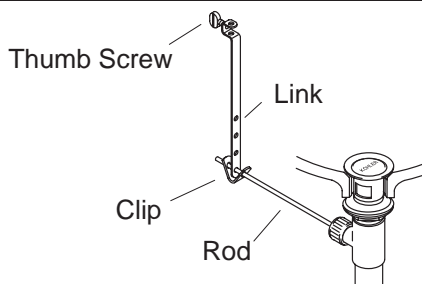


### ALL DRAINS

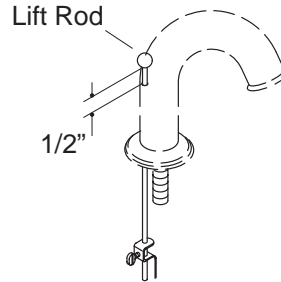
- Insert the stopper into the flange.
- Remove the body nut from the seal hole.
- Fit the short end of the rod into the body seal hole and **under** the stopper for regular installations; **through** the hole for vandal-resistant installations.
- Loosely secure in place with the body nut.
- Remove and adjust the stopper so the stopper lifts about 3/8" when opened. To adjust, loosen the stopper nut and shorten or lengthen the stopper as needed. Re-tighten the stopper nut.
- Handtighten the body nut.
- Apply thread sealant to the tailpiece. Thread the tailpiece into the body and securely handtighten.



- Slide the clip and the link onto the rod with the thumb screw facing toward the back of the lavatory.
- To move the link to the proper position, squeeze the clip and slide it along the rod.
- Push the rod down (open position).



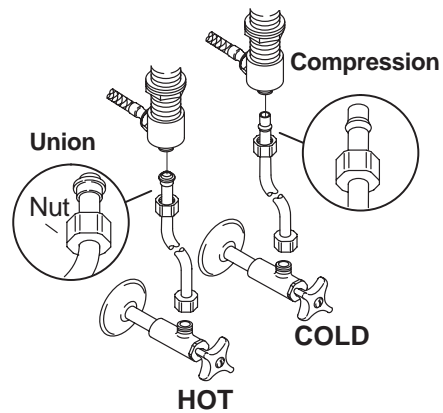
- Slide the faucet lift rod through the hole in the spout and through the hole in the link.
- Tighten the thumb screw on the link so the lift rod knob is 1/2" above the lift rod hole.



**IF THE LAVATORY IS NOT INSTALLED, INSTALL IT AT THIS TIME. BE SURE TO FOLLOW ALL INSTRUCTIONS PACKED WITH THE LAVATORY.**

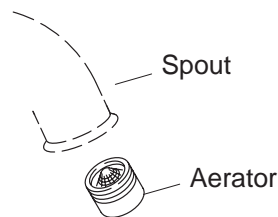
#### SUPPLIES AND STOPS

- Connect the supply tubes to the faucet end bodies and supply stops. (Left is hot – right is cold.)
- Tighten all connections.



#### INSTALLATION CHECKOUT

- Connect the tailpiece and P-trap.
- Ensure that all connections are tight.
- Remove the aerator.
- Open the drain.
- Turn on the main water supply and check for leaks.
- Open both hot and cold valves and run water through the spout to remove any debris. Turn the valves off.
- Reinstall the aerator.



#### CALL US FOR HELP – 1-800-4-KOHLER

##### REQUESTING SERVICE

Here's what you need to do if you require service:

First review the installation instructions to ensure correct installation. If you are still unable to correct the problem, call our Customer Service Department for direct help. Dial **1-800-4-KOHLER**.