



**RIDGEWOOD® WITH Q2 ADVANTAGE™**

**Features**

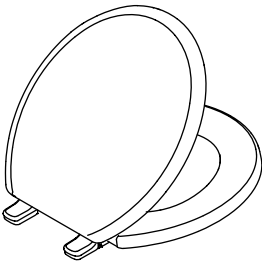
- Painted wood flour
- Quick-Release™ hinge caps snap open and seat pulls forward for removal
- Quick-Attach™ stainless steel fastener allows for top-mount screwdriver only install
- Elongated or round closed-front
- With cover
- Versatile design that complements the design lines of many toilets

**Codes/Standards Applicable**

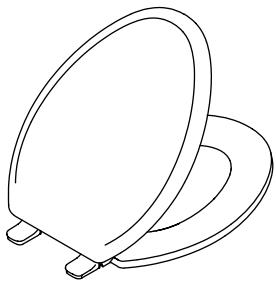
Specified model meets or exceeds the following:

- None applicable

**TOILET SEAT**  
**K-4823**  
**ALSO K-4842**



**K-4823**



**K-4842**

**Colors/Finishes**

- 0: White

**Specified Model**

Model	Description	Colors/Finishes
K-4823	Toilet seat – round closed-front	<input type="checkbox"/> 0
K-4842	Toilet seat – elongated closed-front	<input type="checkbox"/> 0

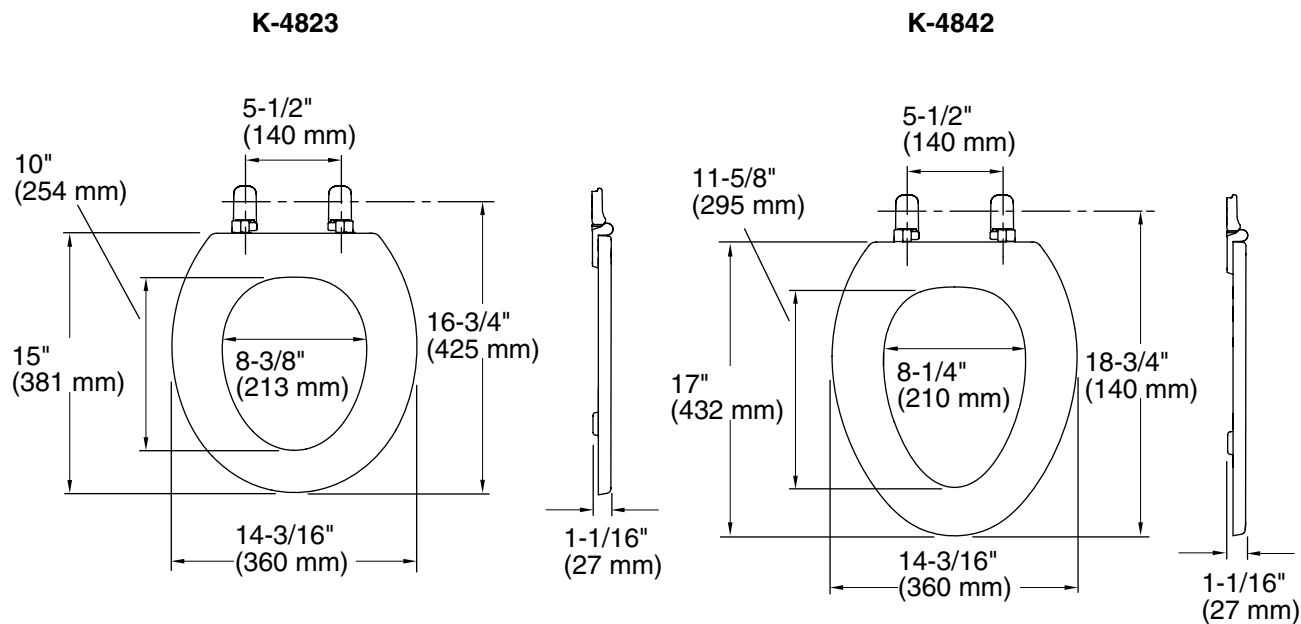
**Product Specification**

The toilet seat shall be made of painted wood flour. Toilet seat shall feature Quick-Release™ hinge caps that snap open, and a seat that pulls forward for removal. Toilet seat shall have Quick-Attach™ stainless steel fastener, which allows for top-mount screwdriver only install. Toilet seat shall be available with elongated closed-front or round closed-front. Toilet seat shall have cover. Toilet seat shall feature a versatile design that complements the design lines of many toilets. Toilet seat shall be Kohler Model K-\_\_\_\_\_-0 .

# RIDGEWOOD® WITH Q2 ADVANTAGE™

## Installation Notes

Install this product according to the installation guide.



## Product Diagram