

Faucet Installation Instructions

MK171

- Hole diameters are 1 1/4" minimum to 1 3/4" maximum
- Maximum deck thickness is 3 3/16" (without escutcheon and soap dispenser) or 2 11/16" (with escutcheon, without soap dispenser) or 2 5/8" (with soap dispenser)
- This kitchen faucet comes completely assembled and water tested
- Includes braided stainless steel supply lines with 1/2" IPS Inlets
- Tools required-channel lock pliers (or pipe wrench), basin wrench and small crescent wrench
- Shut off water supply prior to beginning installation

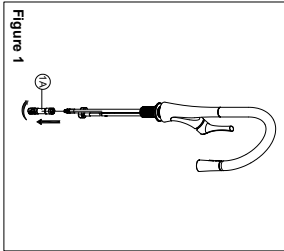


Figure 1

Step 1
Before installation, remove white plastic quick spray/head onto faucet spout ensuring it clicks correctly assembly (7A) from the free end of pull-down hose.

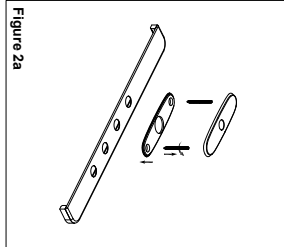


Figure 2a

Step 2a Three Hole Mounting
Screw bolts to the escutcheon; insert escutcheon assembly through the base plate and the holes of the sink.

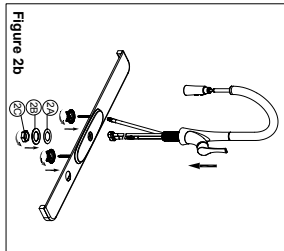


Figure 2b

Step 2b Three Hole Mounting
Tighten black pull-down spray hose and secure spray/head onto faucet spout ensuring it clicks correctly. From underneath sink, slide plastic washer (2A), metal washer (2B), and threaded nut (2C) onto faucet ensuring that you pass both hot and cold water supply hoses through first followed by black pull-down spray hose. Secure by tightening threaded mounting nut (2C).

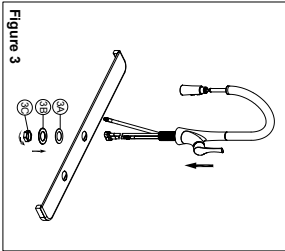


Figure 3

Step 3 Single Hole Mounting
Tighten black pull-down spray hose and secure spray/head onto faucet spout ensuring it clicks into place. Insert faucet through hole in sink or countertop. From underneath sink, slide plastic washer (2A) onto faucet ensuring that you pass both hot and cold water supply hoses through first followed by black pull-down spray hose. Secure by tightening threaded mounting nut (3C).

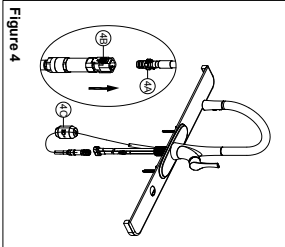


Figure 4

Step 4
Screw quick connector to the free end of pull-down hose. Align block (4A) and tabs (4B) on quick connector. Push quick connector housing firmly against to snap onto receiving nut (4C) onto faucet ensuring that you pass both hot and cold water supply hoses through first followed by black hose at bottom of the loop to prevent hose from twisting.

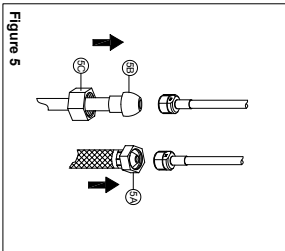


Figure 5

Step 5
Make connections to water lines. Use 1/2" I.P.S. faucet connections (6A, not included) or use coupling nuts (5C, not included) with 3/8" O.D. brass riser (6B). Use wrenches to tighten connections. Do not over-tighten.

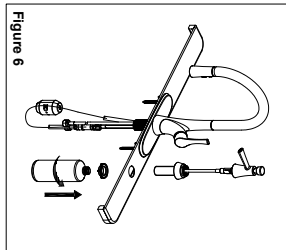


Figure 6

Step 6
Install Soap Dispenser (Optional)
Remove the bottle. Separate head from body assembly by holding the flange and pulling up on the dispenser head taking care not to pull directly on the spigot. Make sure the flange is properly sealed then insert body assembly through stretched hole in sink and secure with nut from assembly tank. Fill bottle with soap from above counter then attached soap dispenser head.

NOTE: To refill soap bottle simply remove dispenser body and fill from above counter.

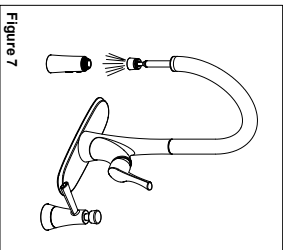
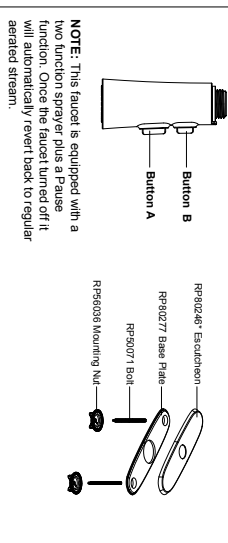
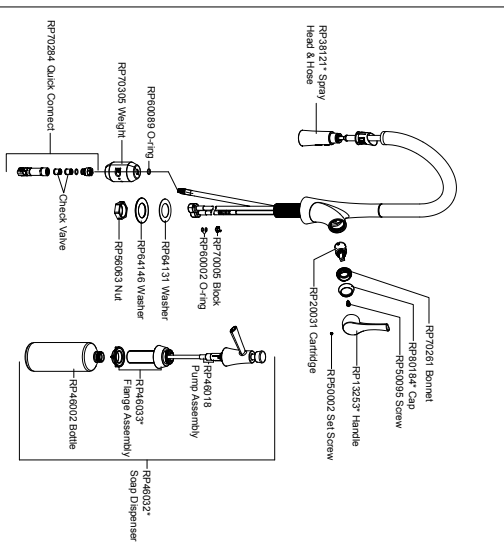


Figure 7

Step 7
Important: After installation is completed, turn on hot and cold water supplies. Check for leaks. Pull the hose assembly out of the spout and remove the spray head by unscrewing it from the hose counterdock/cover. Be sure to hold the hose assembly in place when you disconnect the faucet on to the warm position where it mixes hot and cold water. Flush water lines for one minute. Check for leaks. Re-tighten any connections if necessary, but do not over-tighten. Reinstall spray head by hand tightening it back onto the spray hose.

Faucet Installation Instructions

MK171



NOTE: This faucet is equipped with a two function sprayer plus a Pause function. Once the faucet turned off it will automatically revert back to regular aerated stream.

Button A: Changes flow from regular stream to full spray

Button B: Changes flow from full spray to regular stream.

PAUSE: To initiate Pause please press & hold Button B. Release when you wish to have water flow begin again.

Finish Codes	*Specify Finish
PC	Polish Chrome
SS	Stainless Steel PVD

Maintenance: Clean with warm water, soft cotton cloth and non-abrasive liquid dish soap. Towel dry. Never use acids, harsh abrasives, detergents, or products containing chlorides on any parts of this product.

MISENO

For additional assistance or service call: 1-855-480-2915 or visit our website www.miseno.com

MISENO

For additional assistance or service call: 1-855-480-2915 or visit our website www.miseno.com