

FAUCET DESCRIPTION

- Chrome plated solid brass body
- Gooseneck single mount faucet
- 5.75" x 6" x 10.25" gooseneck included, see reverse side for additional spouts

OPERATION

- Adjustable infrared sensor (range, turn off delay and obstruction delay)
- Temperature controlled by mixing valve or mixing tee (optional)
- Battery powered (AC optional)


FLOW

- 0.5 gpm (1.9 L/min) vandal-resistant multi-stream laminar flow

VALVES

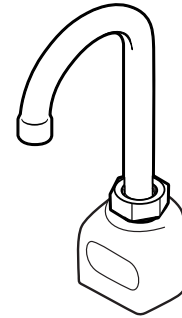
- In-line filter included
- Slow close solenoid valve

STANDARDS

- Third party certified to meet ASME A112.18.1/CSA B125.1, and all applicable specifications referenced therein
- **ADA**  compliant

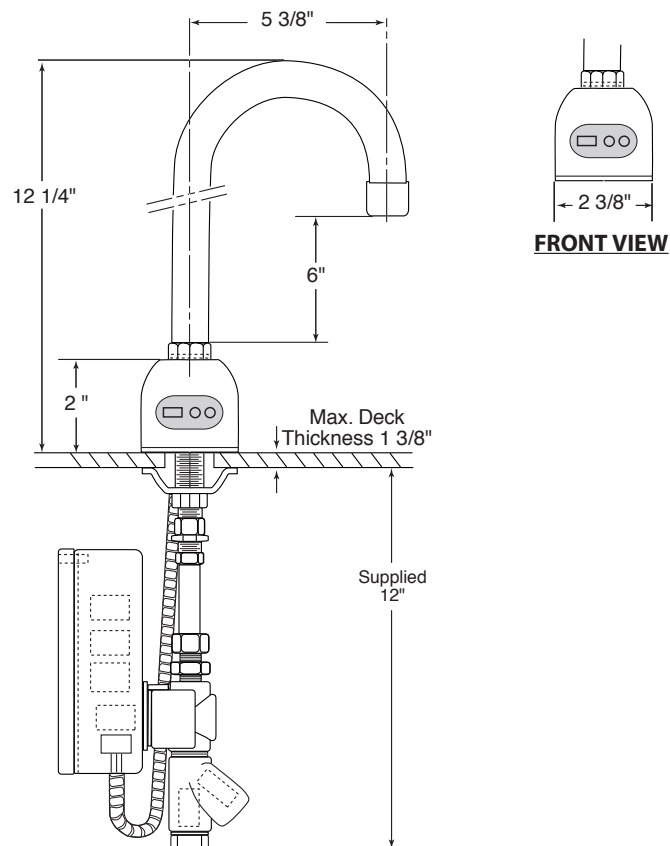
WARRANTY

- Warranted for 5 years against material or manufacturer defects



Single Deck-Mount, Gooseneck, Non-Mixing, Battery Powered Electronic Faucet

Model: 8303



CRITICAL DIMENSIONS

(DO NOT SCALE)