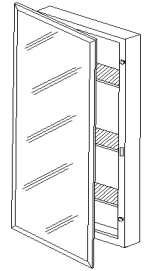


**TOPSIDER  
MODEL 260P26CH  
MEDICINE CABINET**



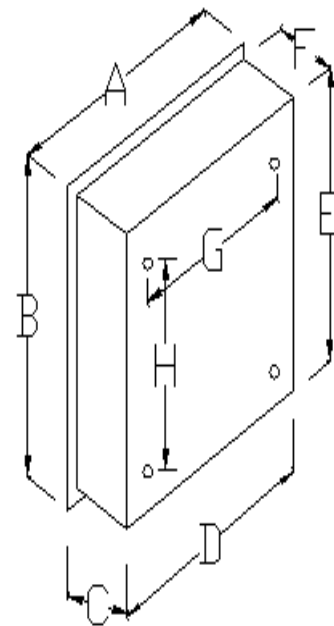
**FEATURES**

- Surface-mounted installation
- Formed and welded 24 gauge steel body with white powder coat paint finish
- 30 gauge steel door with white powder coat paint finish
- 2 MM thick glass mirror on door exterior with standard bright stainless steel trim frame with tab closure
- 16" piano hinge is welded to the door and mechanically fastened to the cabinet body
- A magnetic latch in cabinet flange aligns to a stainless steel striker plate attached to the cabinet door.
- 3 white metal removable shelves
- 6 steel shelf brackets (24 gauge) welded to the interior side walls of the cabinet to create 3 fixed shelf positions
- Reversible for left-hand or right-hand door opening
- Includes mounting screws

**SPECIFICATIONS**

**Finishes:**

- Housing: PT01-Basic White
- Mirror: Flat Mirror
- Frame: SS8-Polish Stainless Steel Trim



MODEL NO.	OVERALL SIZE *			BODY SIZE *				
	A	B	C	D	E	F	G	H
260P26CH	16-1/8	26-1/8	5	15-1/2	25-5/8	4-1/2	11	11-5/8

REFERENCE	QTY.	REMARKS	Project
			Location
			Architect
			Engineer
			Contractor
			Submitted by
			Date

\* All models and material specifications are subject to change or withdrawal without notice.