

VENETO® SERIES ELONGATED HIGH EFFICIENCY 1-PIECE TOILET WITH SLOW CLOSE SEAT

97320-28

- LXP (Luxury Performance) Toilet
- Features the Champion® 4 Accelerator Valve
- Design-matched to Porcher's Contemporary and Transitional collections
- Made of Vitreous China
- Meets definition for HET (High Efficiency) (1.28 gpf/4.8 Lpf)
- 4" Flush Valve with Chemical Resistant Flapper
- Elongated siphon action jetted bowl with a 2-1/8" fully-glazed trapway
- Contoured one-piece design
- Normal bowl height 15"
- Includes a high quality Duroplast slow-close toilet seat with an easy lift-off feature and color matched hinges
- Chrome metal trip lever
- 9-1/4" x 8-1/4" water surface area
- 12" Rough-in
- 10 Year Warranty
- Available in White (001) or Biscuit (071)

Seat Model Number:

- 70320-00**

Optional Trip Levers in Jado matched finishes:

- 81220-00.100** Polished Chrome
- 81220-00.105** Old Bronze
- 81220-00.144** Brushed Nickel
- 81220-00.150** Polished Nickel
- 81220-00.167** Diamond
- 81220-00.355** Ultra Steel
- 81220-00.444** Antique Nickel

Nominal Dimensions:

28-7/8" x 15-3/8" x 27-7/8" (733 x 391 x 708mm)



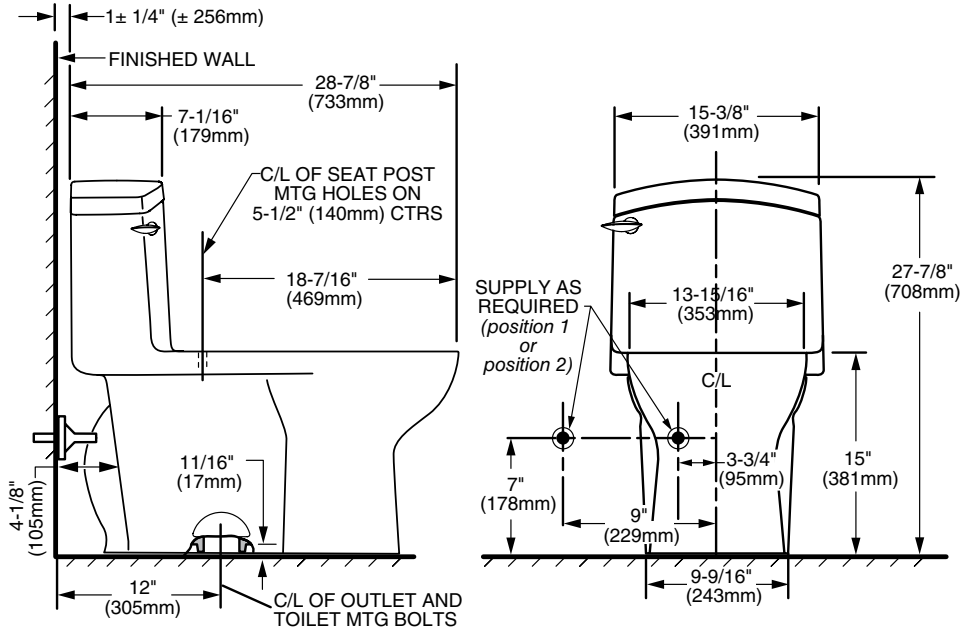
Compliance Certifications – Meets or Exceeds the Following Specifications:

- ASME A112.19.2/CSA B45.1 for Ceramic plumbing fixtures
- Includes Flush Performance, Ball Pass Diameter, Trap Seal Depth and all Dimensions

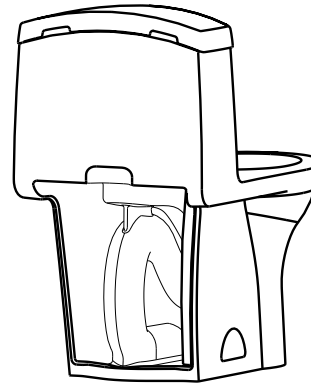
To Be Specified:

- Color:
- Trip Lever Finish:

ROUGH IN DIAGRAM SHOWN
 ON REVERSE SIDE



IMPORTANT: Water supply on the wall is required at 3-3/4" or 9" from centerline of the toilet (see rough-in). First suggested position is hidden behind the toilet. The geometry of the toilet gives space for this installation. The second suggested position is next to the toilet. Between these two positions, the space for the supply between wall and toilet is limited to 4-1/8". In this case, check your supply and hose dimensions.



BACK VIEW

NOTES:

THIS TOILET IS DESIGNED TO ROUGH-IN AT A MINIMUM DIMENSION OF 12" (305MM) FROM FINISHED WALL TO C/L OF OUTLET. SUPPLIES NOT INCLUDED WITH FIXTURE AND MUST BE ORDERED SEPARATELY.

★ DIMENSIONS SHOWN FOR LOCATION OF SUPPLY ARE SUGGESTED.

IMPORTANT: Dimensions of fixtures are nominal and may vary within the range of tolerances established by ANSI Standard A112.19.2M. These measurements are subject to change or cancellation. No responsibility is assumed for use of superseded or voided pages.