

MODEL: 688026
688118
688225

INSTALLATION SHEET

ACCESSORIES

MATERIALS NEEDED:

PHILIP SCREWDRIVER
LEVELING TOOL

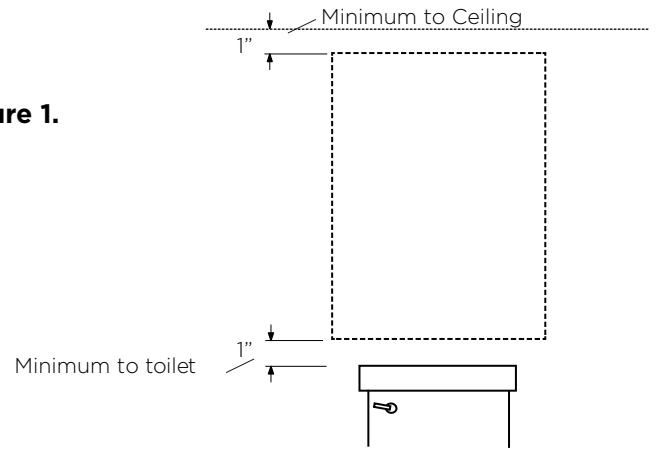
MATERIAL PROVIDED:

(6)WOOD SCREWS
(6)ANCHORS
(2)MOUNTING PLATES

STEP 1: Determine the ideal location of your new overjohn cabinet. Make sure the cabinet has enough clearance from toilet and ceiling.

See Figure 1.

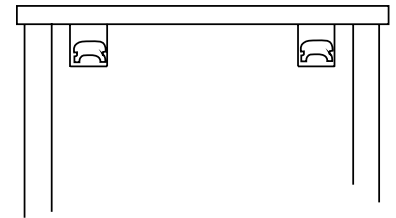
Figure 1.



STEP 2: Measure distance between two mounting brackets and transfer measurement to mounting location.

See Figure 2.

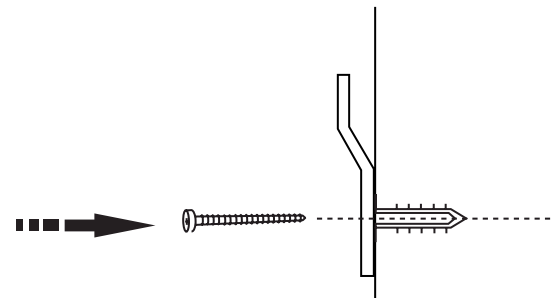
Figure 2.



STEP 3: Install mounting plates (2) to the wall with provided hardware. Use proper hollow wall anchors if necessary.

See Figure 3.

Figure 3.



STEP 4: Install cabinet to wall. Insuring mounting brackets catch mounting plates.

See Figure 4.

Figure 4.

