



L/LV/LM/LMV-Series Lock Case Dimensions

TEMPLATE

L1

Case Size: 4⁷/₁₆" x 6¹/₁₆" x 1" (113 mm x 154 mm x 25 mm)

Backset: **2³/₄" (70 mm)**

Door Range: 1³/₈"–2¹/₂" (35 mm–64 mm)

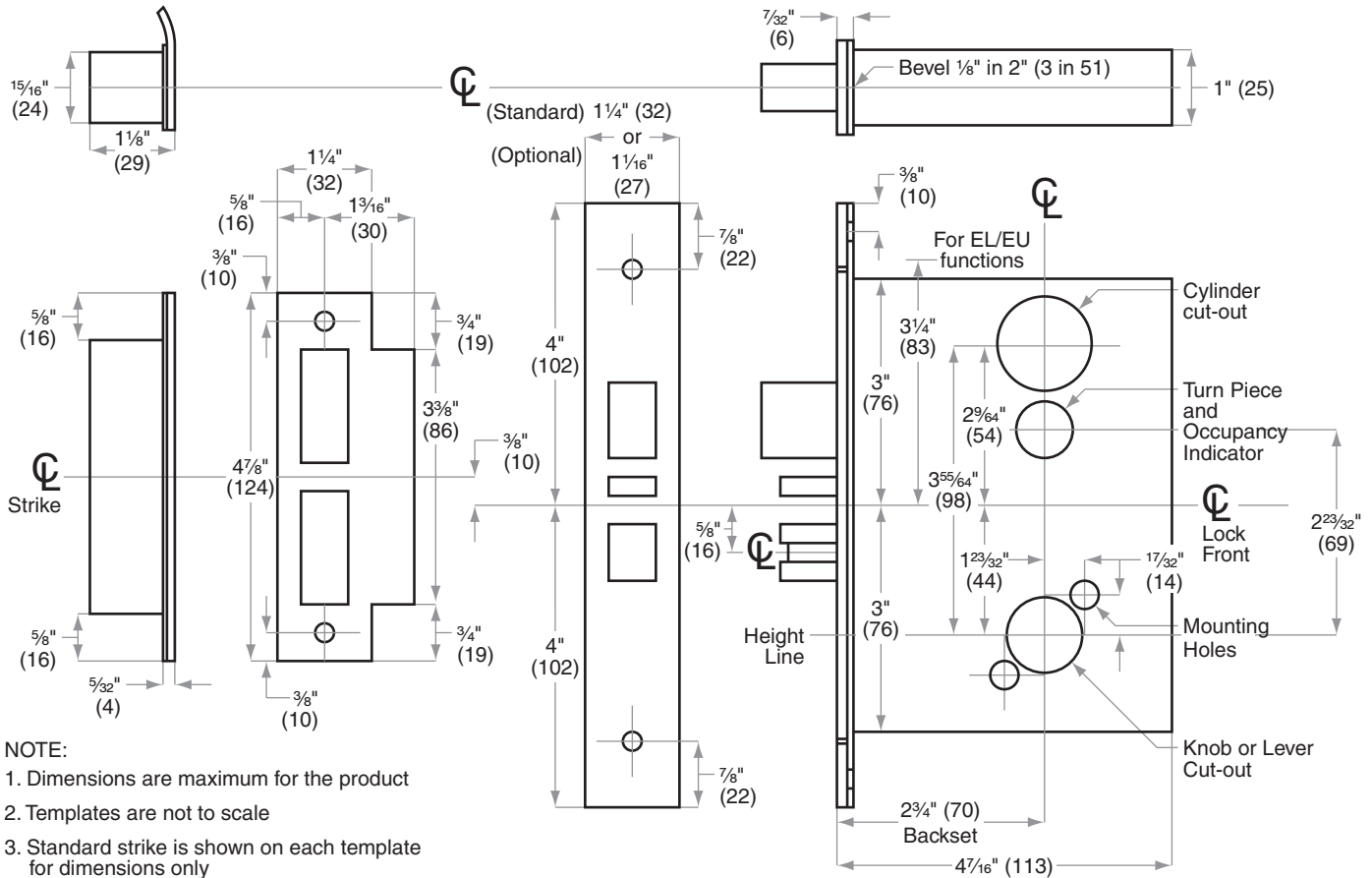
Lock Front: 1¹/₄" x 8" x 7³/₃₂" (32 mm x 203 mm x 6 mm) Standard

1¹/₁₆" x 8" x 7³/₃₂" (27 mm x 203 mm x 6 mm) Optional

Knob or Lever to Cylinder: 3⁵⁵/₆₄" (98 mm)

Knob or Lever to Turn Piece: 2²³/₃₂" (69 mm)

Height Line to Center of Deadbolt: 3¹/₃₂" (77 mm)



NOTE:

1. Dimensions are maximum for the product
2. Templates are not to scale
3. Standard strike is shown on each template for dimensions only
4. Dimensions do not provide allowances for door silencers, weather stripping, sound proofing or other additions to door or door frames

ANSI Standards: L9000-Series locks meet all requirements for installations in doors and frames prepared in accordance with ANSI specifications A156.13, 2005

Metal Doors: Suitable reinforcement is required to support lock case in center of door and to prevent door from compressing when trim is tightened. (See ANSI A115.1)

Thick Doors: Locks for non-standard door thickness may require special instructions

Lead Lining: When L9000-Series or L400-Series locks are ordered with lead lining, add 1/8" (3) to the width of the mortise cut-out on the lock case cover side of installation

Electrified Locks: Provisions must be made to route low voltage wire to the lock. Attach wires to the 6" (152) pigtail of the solenoid. Power transfer unit and low voltage wiring are not furnished



Dimensions shown in parentheses () are in millimeters.
Template is not to scale. Standard backset in **bold**.

© 2012 Schlage Lock Company
L1 Rev. 03/12-a