

RS-Series

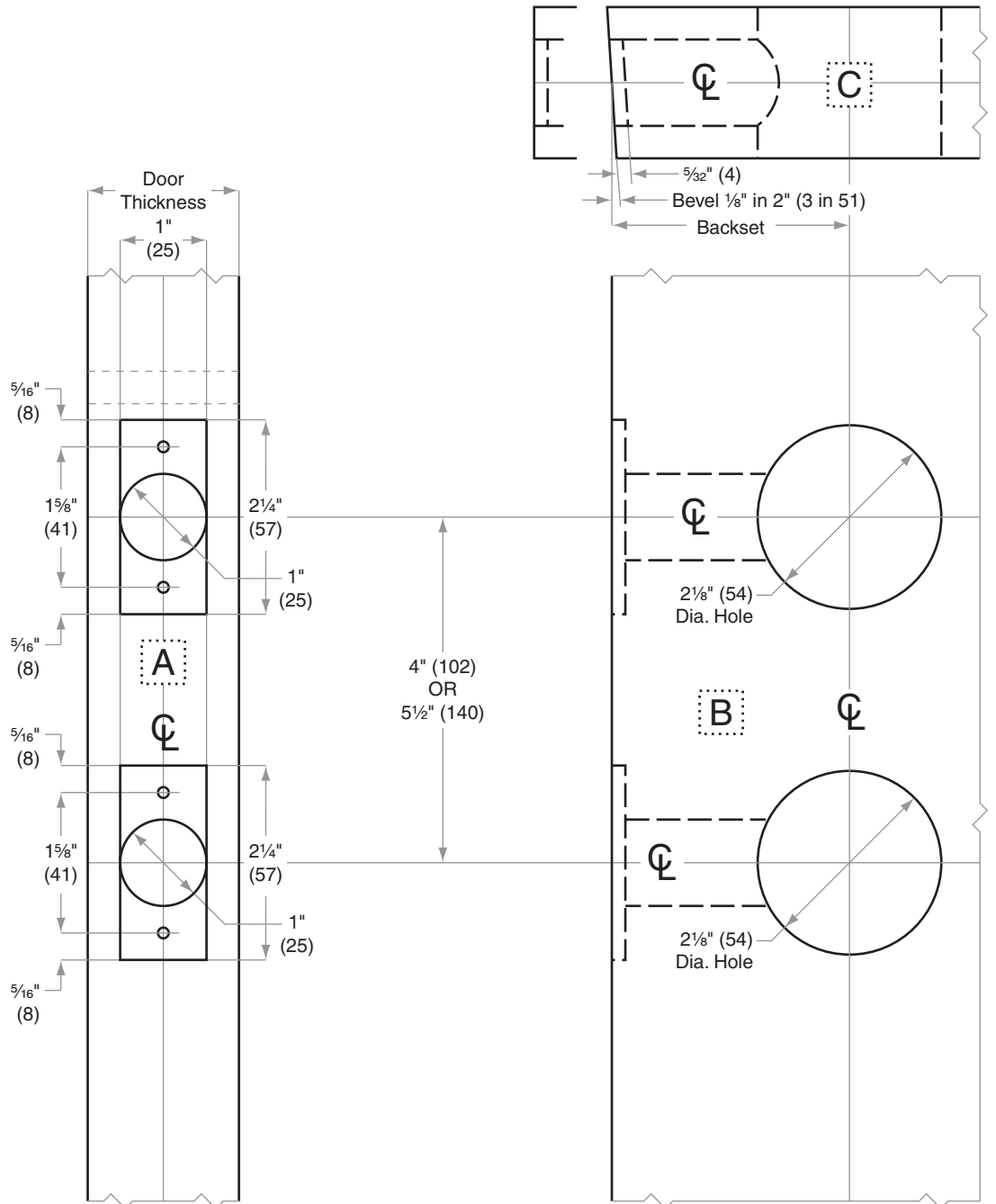
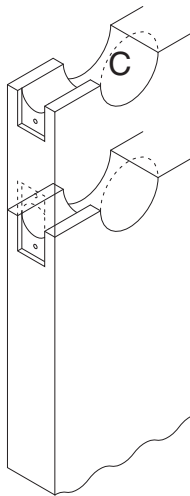
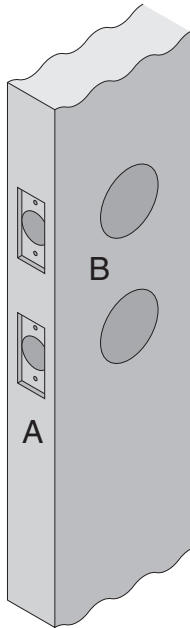
RS210F

Door Type: Wood or Composite, Flat or Beveled

Door Thickness: 1 $\frac{3}{8}$ " (41 mm)– 1 $\frac{3}{4}$ " (44 mm)

Faceplate: Square Corner, 1" (25 mm) wide

Backsets: RS101-C, 2 $\frac{3}{8}$ " (60 mm) | RS101-D, 2 $\frac{3}{4}$ " (70 mm)



Dimensions shown in parentheses () are in millimeters

Template is not to scale.

Job: _____

TEMPLATE

Date: _____

Door Thickness: _____

RS101

Remarks: _____

RS-Series

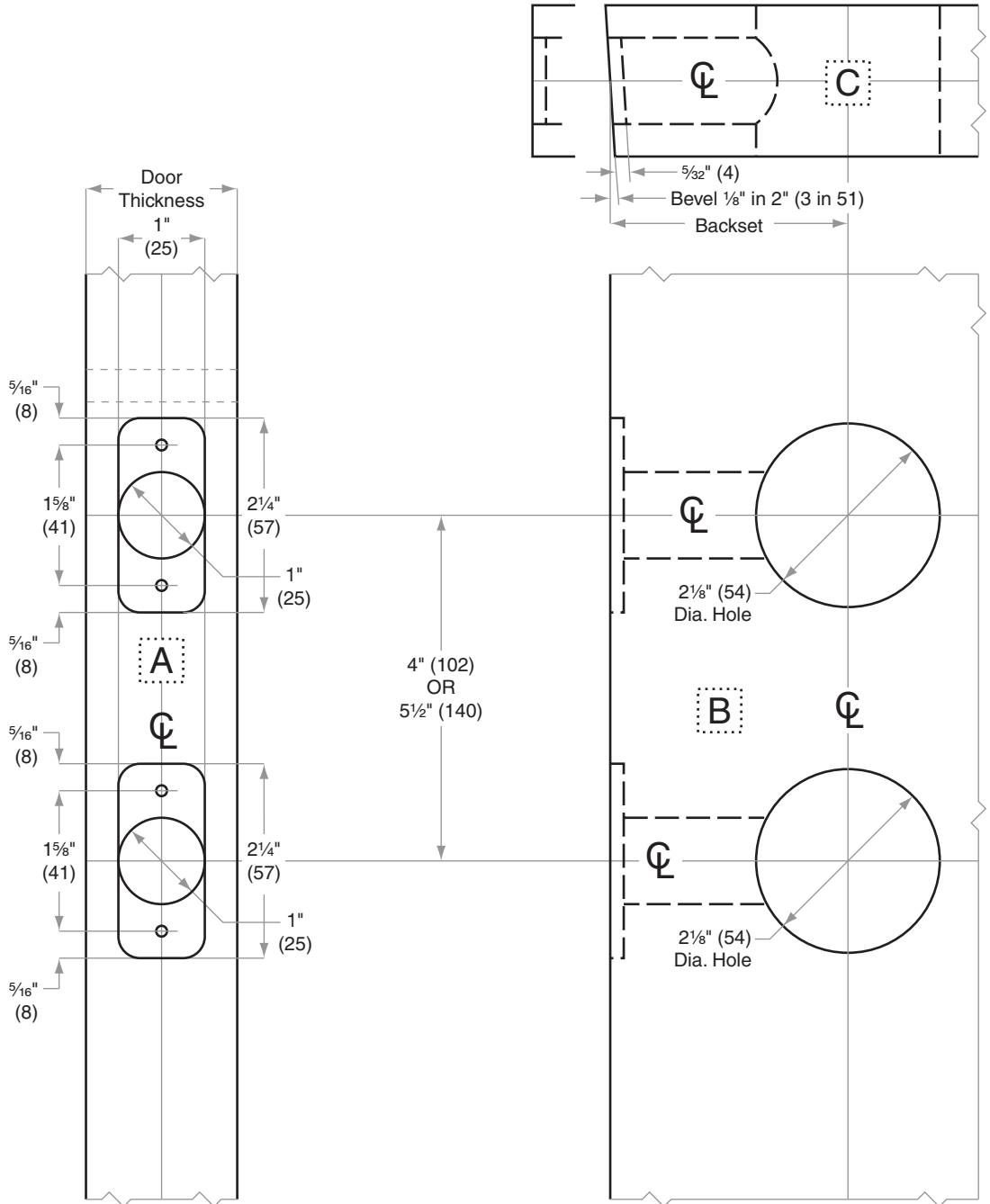
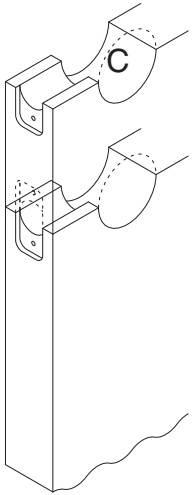
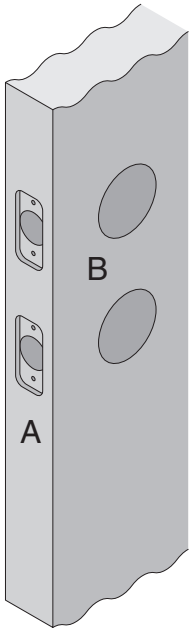
RS210F

Door Type: Wood or Composite, Flat or Beveled

Door Thickness: 1 $\frac{3}{8}$ " (41 mm)– 1 $\frac{3}{4}$ " (44 mm)

Faceplate: Round Corner, $\frac{1}{4}$ " (6 mm) Radius, 1" (25 mm) wide

Backsets: RS102-C, 2 $\frac{3}{8}$ " (60 mm) | RS102-D, 2 $\frac{3}{4}$ " (70 mm)



Dimensions shown in parentheses () are in millimeters

Template is not to scale.

Job: _____ **TEMPLATE**

Date: _____

Door Thickness: _____ **RS102**

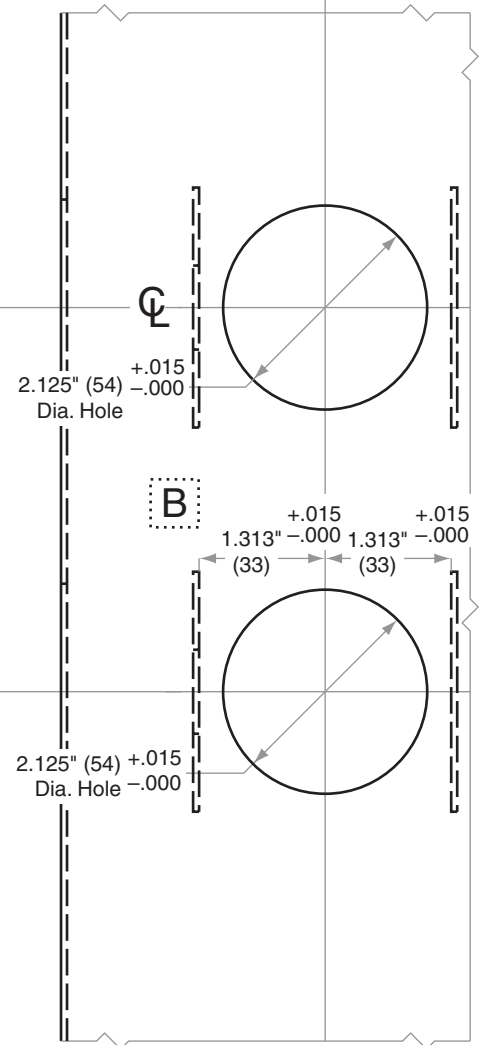
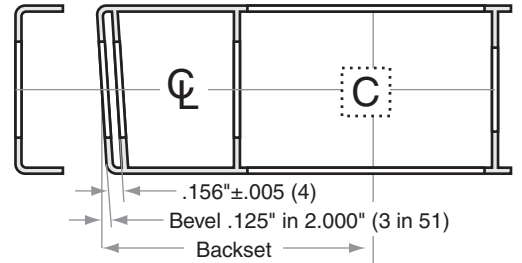
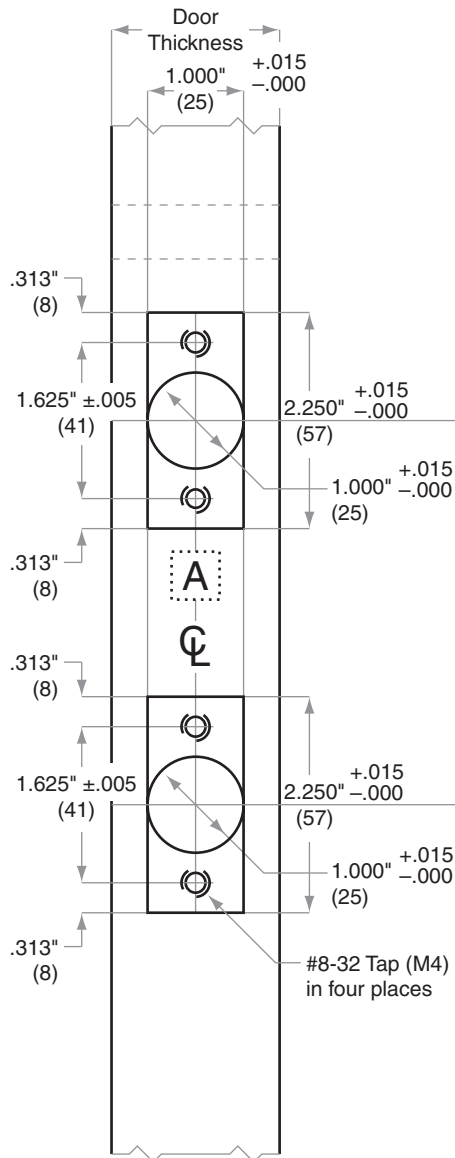
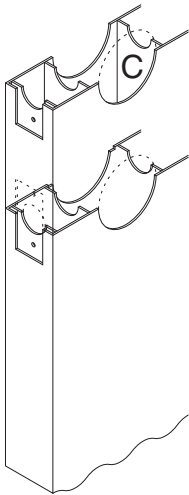
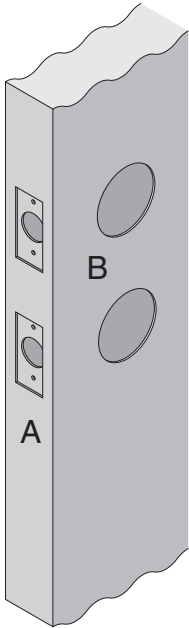
Remarks: _____

RS-Series

RS210F

- Door Type:** Metal, Flat or Beveled
Door Thickness: 1 $\frac{3}{8}$ " (41 mm)– 1 $\frac{3}{4}$ " (44 mm)
Faceplate: Square Corner, 1" (25 mm) wide
Backsets: RS103-C, 2 $\frac{3}{8}$ " (60 mm) | RS103-D, 2 $\frac{3}{4}$ " (70 mm)

For metal door installations suitable reinforcement is required to support latch in center of door and to prevent lateral movement.



Dimensions shown in parentheses () are in millimeters

Template is not to scale.

Job: _____

TEMPLATE

Date: _____

Door Thickness: _____

RS103

Remarks: _____