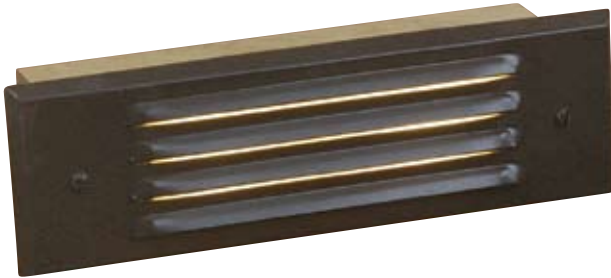




TROY
Landscape Lighting
A Division of Troy-CSL Lighting, Inc.

S10 Long Step Light Brass



15 Louver
Natural Antique
Bronze
(NAZ)



16 Window
Natural Antique Bronze
(NAZ)



17 Grille
Natural Antique
Bronze
(NAZ)

Housing

- Recessed mount
- Solid Brass housing with a choice of three Solid Brass covers

Lens

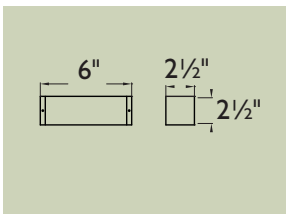
- Heat and impact resistant glass

Socket and Wiring

- Bi-pin type G4/GU5.3 with stainless steel spring. Pre-wired w/ 3 foot 16 gauge wire leads.

Ordering Example

S10 B 18 NAZ



Model	Material	Cover	Socket/Lamp	Natural Finishes	Powder Coat
S10	B Solid Brass	15 Louver	G4/GU5.3	NAP NAR	PAB PBZ
		16 Window	10W L-JCB-10	NAS NAZ	PDV POC
		17 Grille		NOC UFB	PRI PSD PTB PWB PTW

*We reserve the right to change specifications without notice.