

INSTALLATION

PLACE FOR USE

1. Because the machine distributes hot air, please don't place or operate in a narrow place.
2. Do not work the machine in a humid place.
3. Don't place the machine in a sunlit corner otherwise the unit might shut down due to the overheat and the color of the machine may soon fade out.

HELPFUL HINTS

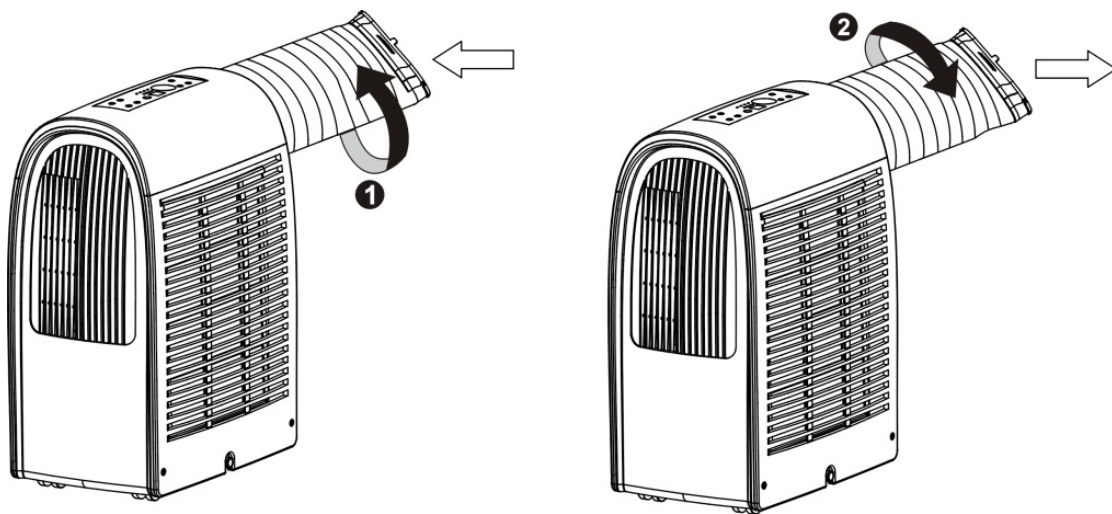
The unit is fitted with a special thermal cut off device.

Please ensure the unit is not placed against objects which will obstruct air intake e.g. furniture or curtains as this will affect its performance dramatically.

Do not overextend the exhaust hose beyond it's full extension or attach additional extensions.

EXHAUST HOSE INSTALL

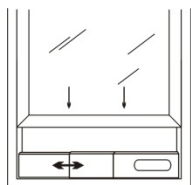
1. To attach the flexible exhaust hose to the unit, rotate the hose clockwise (as shown in figure ①) directly onto the hot-air outlet ring .
2. To remove the flexible exhaust hose from the unit, rotate the hose counter-clockwise (as shown in figure ②) off of the hot-air outlet ring .



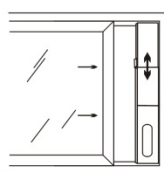
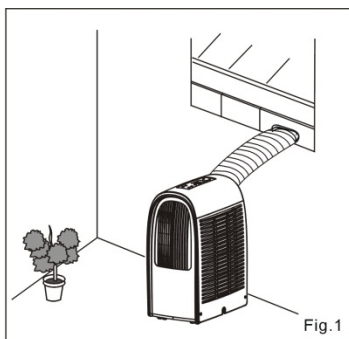
INSTALLATION

WINDOW KIT INSTALL

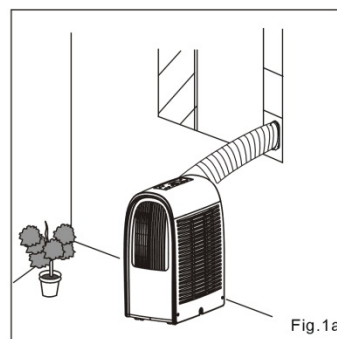
1. Install the Flexible Exhaust Hose and the Adjustable Window Slider Kit as depicted in Fig.1 & Fig.1a.



Window slider kit
min: 55cm
max: 100cm



Window slider kit
min: 55cm
max: 100cm



How to enjoy heating function?

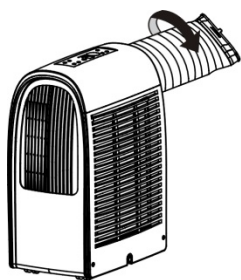


Fig.01

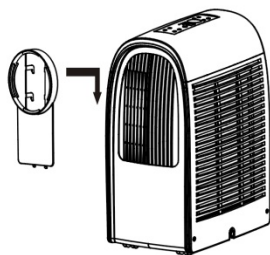


Fig.02

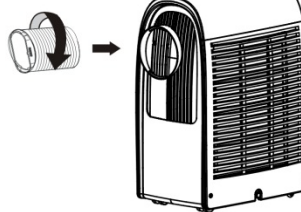


Fig.03

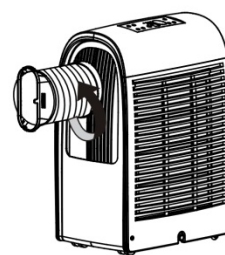


Fig.04

1. For heating function: remove the exhaust hose from the unit, as shown in "Fig.01".
2. As shown in "Fig.02", slide the heat clip connector onto the cooling outlet side of the unit.
3. As shown in "Fig.03", attach the exhaust hose directly onto the heat clip connector.
4. Rotate the hose clockwise, as shown in "Fig.04", directly onto the heat clip ring.
5. Now turn the unit around and feed hose through window, or other opening, as shown in "WINDOW KIT INSTALL" section above.