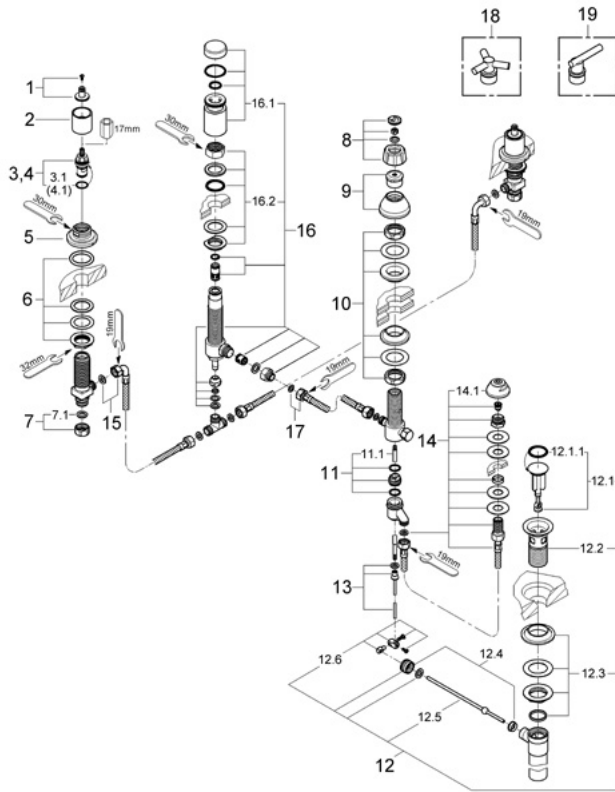


Exploded View



Parts Breakdown

Pos No.	Spare Part Description	Product No.	Pcs.
24 016			
1	Handle connection set	45 605	1
2	Flange sleeve	08 124	1
3	90 degree carbodur cartridge	45 882	1
3.1	O-ring	03 924	1
4	90 degree carbodur cartridge	45 883	1
4.1	O-ring	03 924	1
5	Valve flange	45 630	1
6	Valve mounting kit	45 286	1
7	1/2" coupling nut	12 902	1
7.1	Fiber washer for relexa hose	01 389	1
8	Diverter knob	45 709	1
9	Esc w/nut	45 686	1
10	Diverter mounting set	45 687	1
11	Diverter cone & rod	45 645	1
11.1	Diverter rod	45 644	1
12	Pop-up drain	28 957	1
12.1	Chr pop-up stopper for 28.958	45 324	1
12.1.1	Stopper o-ring for 28.958	01 147	1
12.2	Chrome flange for 28.958	01 153	1
12.3	Mounting nut for 28.958	45 266	1
12.4	Ball rod nut w/bush for 28.958	45 265	1
12.5	Ball rod w/spring for 28.958	45 264	1
12.6	Toggle lever	45 485	1
13	Swivel vertical P-U rod	45 646	1
14	Vertical spray	24 210	1
14.1	Spray face plate	02 664	1
15	Noblesse wideset hose	45 704	1
16	Vacuum breaker complete	45 852	1
16.1	Cover & tube for vacuum breaker	45 853	1
16.2	Vacuum mounting kit	45 855	1
17	Diverter connection hose	28 935	1
Special Accessories			
18	T rio spoke handle	45 603	1
19	Atrio lever	45 609	1