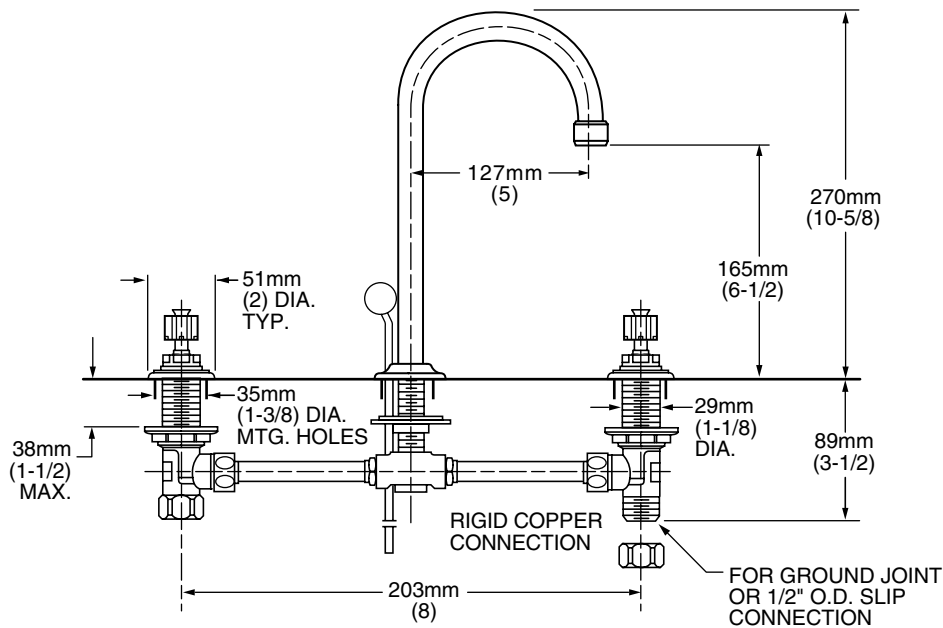


6831.000 Shown

MODEL NUMBER:

- ❑ **6830.000 8" Widespread Lavatory**
 Rigid gooseneck spout. 1.5 gpm pressure compensating aerator. Less drain. Less handles. Rigid copper connection.
- ❑ **6831.000 8" Widespread Lavatory**
 Rigid gooseneck spout. 1.5 gpm pressure compensating aerator. Pop-up drain. Less handles. Rigid copper connection.
- ❑ **6832.000 8" Widespread Lavatory**
 Rigid gooseneck spout. 1.5 gpm pressure compensating aerator. Grid strainer drain. Less handles. Rigid copper connection.

Handles must be ordered separately.



GENERAL DESCRIPTION:

Cast brass valve bodies with rigid copper 8" (203mm) connections. Amaris 1/4 turn washerless ceramic disc valve cartridges. Fixed brass spout. One-half inch male inlet shanks with brass coupling nuts and shank nuts. All brass drain body (on applicable models) with 1-1/4" (32mm) tailpiece. 1.5gpm/5.7L/min. maximum flow rate.

PRODUCT FEATURES:

- Pressure Compensating Aerator:** Provides a constant water flow of 1.5 gpm throughout the pressure range.
- Brass Construction:** Durable - Excellent in high use applications. Ideal for prolonged contact with water.
- Ceramic Disc Valve Cartridges:** Assures a lifetime of drip-free performance.
- Low Lead:** Meets NSF Standard 61/Section 9 & Prop 65 lead requirements.

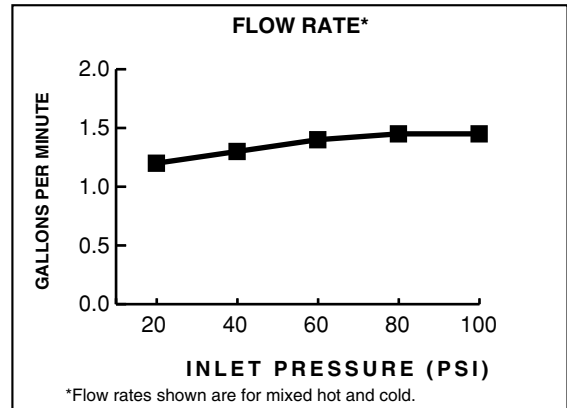
SUGGESTED SPECIFICATION:

Two handle widespread lavatory faucet shall feature cast brass valve bodies with 8" rigid copper connections. All brass shank nuts and coupling nuts. Shall feature water-conserving 1.5 gpm/5.7L/min. pressure compensating aerator. Shall also feature 1/4 turn washerless ceramic disc valve cartridges. Fitting shall be American Standard Model #680_000_ and handle kit # 0000_.

CODES AND STANDARDS

These products meet or exceed the following codes and standards:

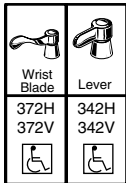
- ASME A112.18.1**
- CSA B 125**
- NSF 61/Section 9**



Product Number	Description	Finish
		Polished Chrome
		002
6830.000	Lavatory Faucet. 1.5 gpm/5.7L/min pressure compensating aerator. Less drain. Less handles.	
6831.000	Lavatory Faucet. 1.5 gpm/5.7L/min pressure compensating aerator. Pop-up drain. Less handles.	
6832.000	Lavatory Faucet. 1.5 gpm/5.7L/min pressure compensating aerator. Grid strainer drain. Less handles.	

Handles must be ordered separately.

The above fittings will accept the following Amarilis-Series handles.



Meets the American Disabilities Act Guidelines and **ANSI A117.1** Requirements for the physically challenged.

Other Aerators Available:

Part Suffix	Description
V15	1.5 gpm Pressure Compensating Vandal-Resistant Aerator
L15	1.5 gpm Pressure Compensating Laminar Flow
LV15	1.5 gpm Pressure Compensating Vandal-Resistant Laminar Flow Outlet
V05	0.5 gpm Pressure Compensating Vandal-Resistant Spray