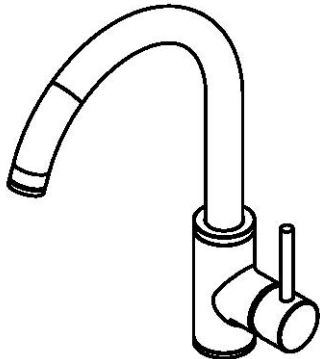


schön

403

brass works

SINGLE HANDLE KITCHEN FAUCET



403

Product Features

- 1 Hole Installation
- 2.2 GPM @ 60PSI water saving aerator
- Brass body
- 1/2" 14 NPS Inlet
- Ceramic cartridge
- Metal lever handle

Standards/Approvals

- 403 meets or exceeds:
- ANSI/ASME A112.18.1
- ANSI/NSF 61 – Sec 9
- IAPMO/UPC
- California Proposition 65
- Massachusetts
- 403 meets ADA requirements

UPC®



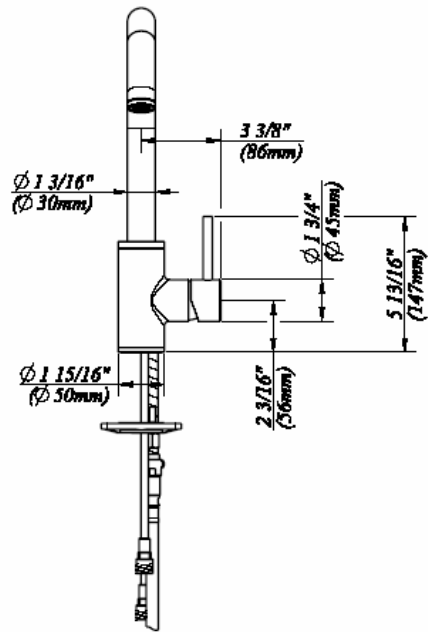
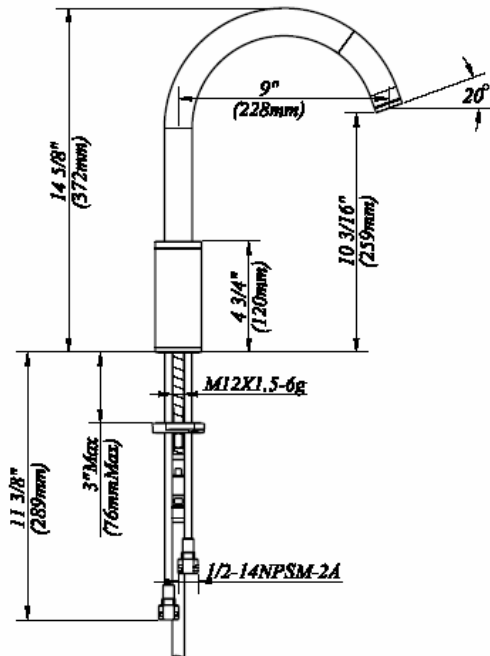
PRODUCT SPECIFICATION:

Single handle pull down kitchen faucet shall have a brass body, ceramic cartridge, 9" spout, brass lever handle. Product shall be able to be installed in 1hole installation. Product shall be schön brass works model 403.

s c h ö n
brass works

403

SINGLE HANDLE KITCHEN FAUCET



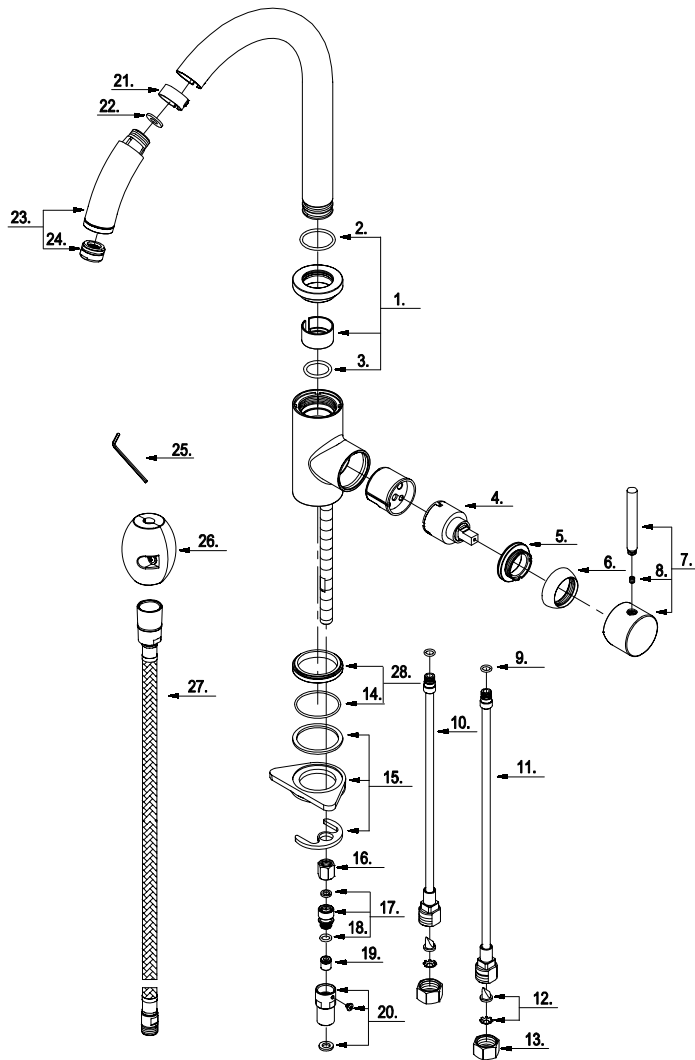
Other Specifications

Faucet Hole diameter	1-1/2"
Max Deck Thickness	3"
Spout height	14-5/8"
Spout reach	9"
Aerator clearance	10-3/16"
Body base diameter	1-15/16"

Available Finishes

- Chrome
- Stainless Steel
- Oil Rubbed Bronze
- Tumbled Bronze

PARTS BREAKDOWN



PARTS LISTING

No	Name	Kit / Part #
1	Spout Seal kit	A66D180
2	O-Ring (Φ1-3/16" ID * Φ1-3/8" OD)	A072090
3	O-Ring (Φ7/8" ID * Φ1-1/8" OD)	A004051
4	Ceramic Disc Cartridge	A507348N
5	Locking Nut	A104207
6	Trim Cap	A103016XX
7	Metal Handle Assembly	A662630XX
8	Screw (M5 * 5mm L)	A008003
9	O-Ring (Φ5/16" ID * Φ7/16" ID)	A004001N
10	Supply Pipe- Cold	A051404N
11	Supply Pipe- Hot	A051406N
12	Back Flow Prevention Device	A603661N
13	Coupling Nut	A009016
14	O-Ring (Φ1-5/8" ID * Φ1-13/16" OD)	A072032
15	Mounting Hardware	A66D098ZN
16	Lock Nut	A054062
17	Shank Adaptor Assembly	A66D099N
18	O-Ring (Φ5/16" ID * Φ1/2" OD)	A004031N
19	Check Valve	A519204N
20	Hose Adaptor Assembly	A663880
21	Hose Guide	A126690KP
22	Seal	A058007
23	Hand Spray w/ Check Valve	A500579NXX
24	Aerator	A500859NXX
25	Hex Wrench (H2.5 * 19 mm L * 53 mm L)	A031000
26	Weight	A504713
27	Spray Hose	A512101NXX
28	Base Trim Ring	A667181XX

XX designates finish matched parts