

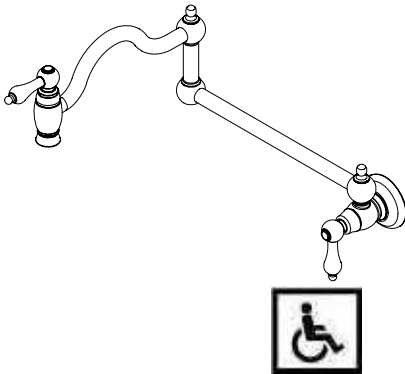


N180 01

POT FILLER KITCHEN FAUCET

Product Features

- 1 Hole Installation
- 2.2 GPM @ 60PSI water saving aerator
- Brass body
- ½" 14 NPS Inlet
- Ceramic cartridge
- Metal lever handle



N180 01

Standards/Approvals

- N180 01 meets or exceeds:
- ANSI/ASME A112.18.1
- ANSI/NSF 61 – Sec 9
- IAPMO/UPC
- California Proposition 65
- Massachusetts
- N180 01 meets ADA requirements

UPC®



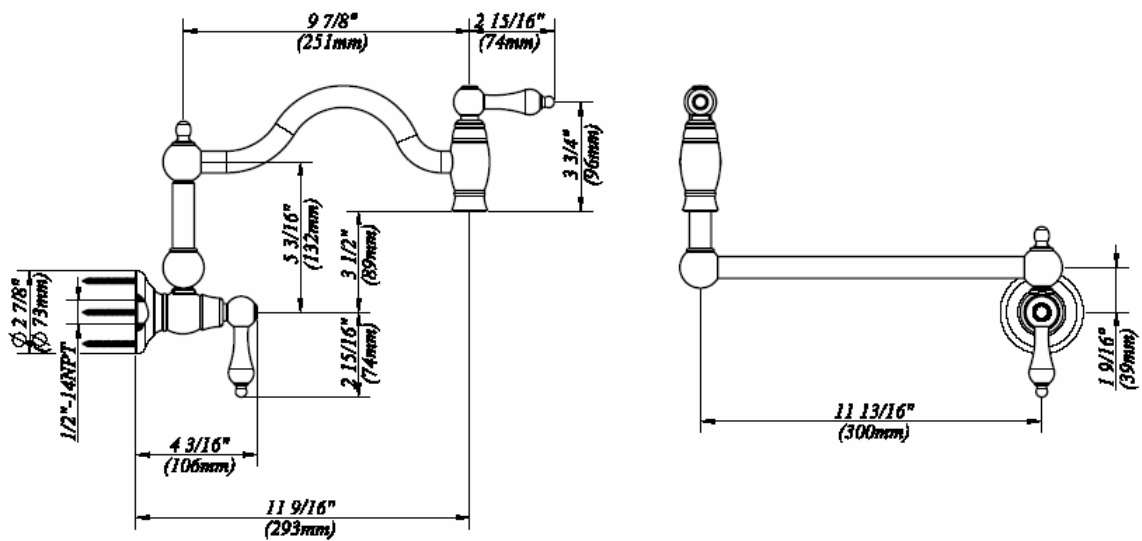
PRODUCT SPECIFICATION:

Wall mount pot filler kitchen faucet shall have a brass body, ceramic cartridge, 9-7/8" high-rise brass tube spout, brass lever handles. Product shall be able to be installed in 1hole installation. Product shall be Belle Forêt model N180 01.



N180 01

POT FILLER KITCHEN FAUCET



Other Specifications

Faucet Hole diameter	$1/2"$
Spout reach	$9\frac{7}{8}"$
Aerator clearance	$15\frac{13}{16}"$
Body base diameter	$2\frac{11}{16}"$

Available Finishes

- Chrome
- Stainless Steel
- Oil Rubbed Bronze
- Tumbled Bronze

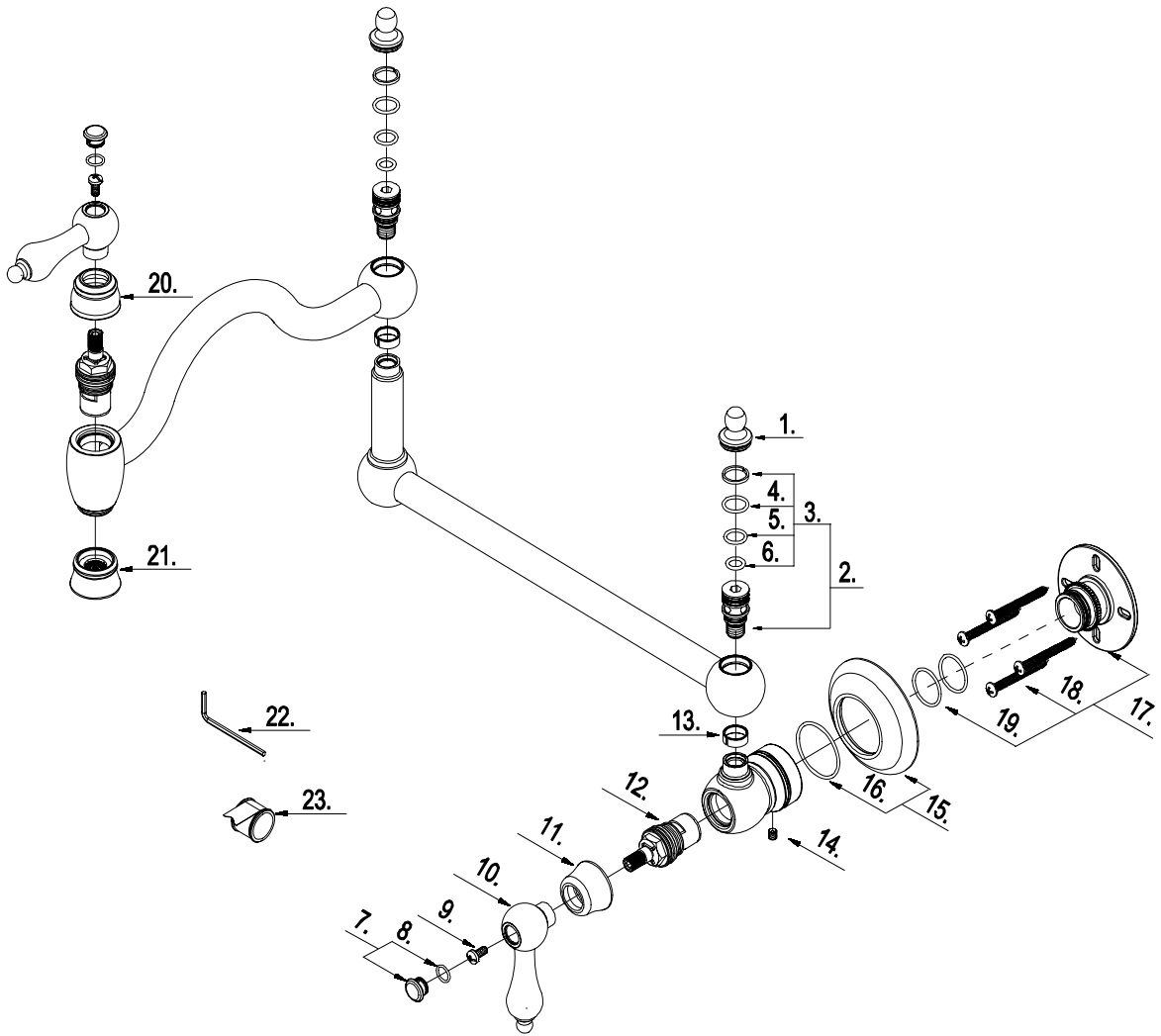


Belle Forêt
collection

N180 01

POT FILLER KITCHEN FAUCET

PARTS BREAKDOWN





N180 01

POT FILLER KITCHEN FAUCET

PARTS LISTING

No	Name	Kit / Part #
1	Spout Cap	A040193XX
2	Spout Connector	A603713N
3	Spout Seal Kit	A66D143N
4	O-Ring(Φ 1/2" ID * Φ 5/8" OD)	A004032N
5	O-Ring(Φ 7/16" ID * Φ 9/16" OD)	A004023N
6	O-Ring (Φ 5/16" ID * Φ 1/2" OD)	A004031N
7	Handle Cap	A663184XX
8	O-Ring (Φ 5/16 " ID * Φ 7/16" OD)	A048051
9	Screw (3/16" -24 * 3/8" L)	A008060
10	Metal Handle	A662631XX
11	Handle Base	A018902XX
12	Ceramic Disc Cartridge-Hot	A507375N
13	Washer	A013651
14	Screw (M5 * 5mm L)	A008003
15	Base Trim Ring	A667743XX
16	O-Ring (Φ 1-5/16" ID * Φ 1-7/16" OD)	A004103
17	Holding Hardware	A607377NXX
18	Screw(ST4.8 * 50 mm l)	A008745
19	O-Ring(Φ 13/16" ID * Φ 1" OD)	A048033N
20	Handle Base	A018903XX
21	Aerator	A500915N-50XX
22	Hex Wrench(H2.5 * 19 mm L * 53 mm L)	A031000
23	Pipe Tape	A203000

XX designates finish matched parts.