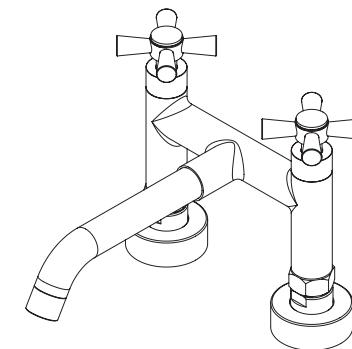




FUSION  
HARDWARE GROUP INC

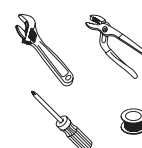
# installation



Tub Filler

## Tools:

- Adjustable Wrench
- Groove Joint Pliers
- Phillips Screwdriver
- Pipe Tape



## Maintenance

Your new faucet is designed for years of trouble-free performance. Keep it looking new by cleaning it periodically with a soft cloth. Avoid abrasive cleaners, steel wool and harsh chemicals as these will dull the finish and void your warranty.

## Safety Tips

- If you use solder for the installation of the faucet, the seats cartridges and washers will have to be removed before using flame. Otherwise, warranty will be void on these parts.
- Protect your eyes with safety glasses when cutting or soldering water supply line.
- Cover your drain to avoid losing parts.

## Important points

Prior to beginning installation, turn off the cold and hot water lines and open the old faucet to release build-up pressure. When installing your new faucet, please check to make sure your deck has 35mm(±3mm) diameter clearance holes with 140mm to 160mm apart from center-to-center of connections tub, turn the connector nuts finger tight, and then use one wrench to anchor the fitting and a second wrench to tighten the nut one additional turn. Connections that are too tight will reduce the integrity of the system. Wrap all threaded connections with Teflon tape available at your local hardware or plumbing supply store. Always wrap in a clockwise direction.

## Things You May Need

All installations can vary depending on how your previous faucet was installed. Necessary supplies to install your faucet are not all included; however they are available wherever plumbing supplies are sold. When choosing your installation supplies, make sure they are IAPMO and/or CSA approved products.

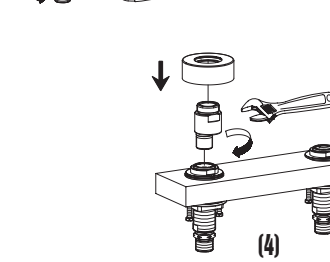
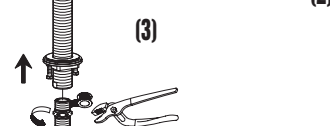
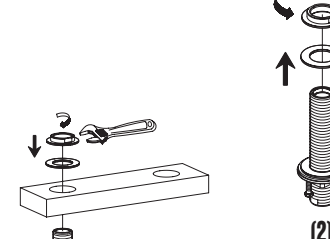
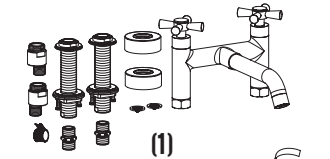
NOTE: The fittings should be installed by the licence plumber of the state.

## Need help?

Please call our toll Free Customer Support 877-215-4683 (a ternate 678-990-1676)

## What you need to know

## Preparation/Assembly



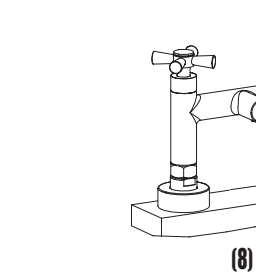
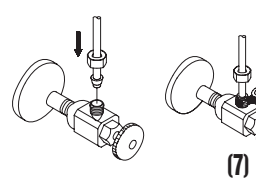
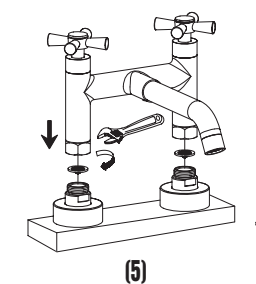
**1** Check to make sure you have the following parts indicated on left.

**2** Shut off water supply. Remove the nut and seal from shank.

**3** Place the shank through the hole from the bottom. Replace the nut and seal in reverse order. Tighten the nut with wrench. Apply pipe tape onto thread of connector. Screw the connector into the shank with Phillips screwdriver. Repeat procedure for the other shank.

**4** Screw the connector into the shank with adjustable wrench, then place canopy. Repeat procedure for the other shank.

## Installation



**5** Secure the body assembly to the connector.

**6** Slip coupling nut behind ball-nose of flexible supply tube. Ball nose coupling will go partially into IPS shank or fitting, Tighten coupling nut (DO NOT OVER TIGHTEN). Install opposite end according to manufacturer's instructions for both tubes.

**7** Connect water supply tubes (not provided) to the faucet inlet as illustrated. Apply pipe tape to the threads of water supply. Secure carefully using coupling nut provided.

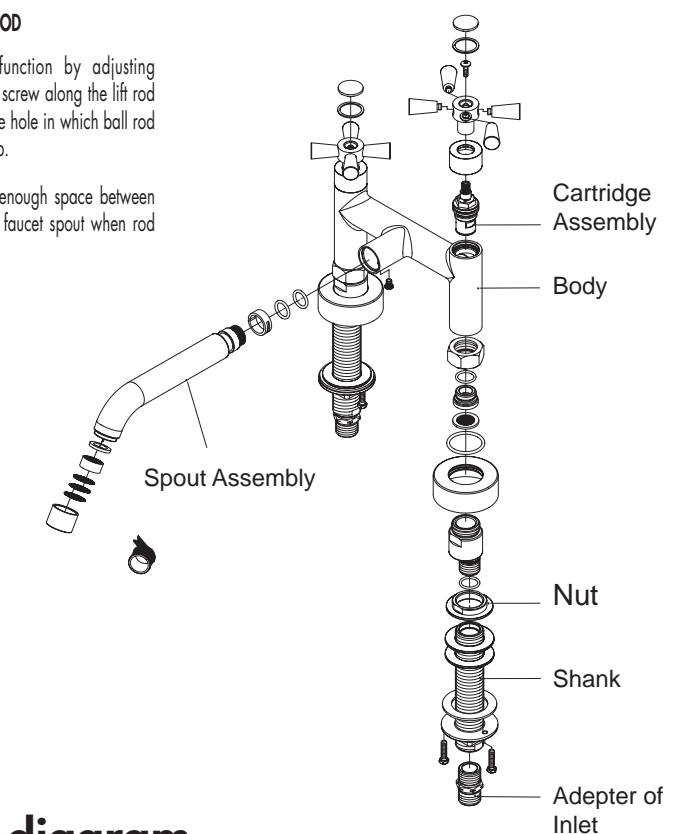
**8** After installation is completed, remove aerator. Turn on water supply and allow both hot and cold water to run for at least one minute each. While water is running, check for leaks. Replace aerator. Tighten nuts slightly to stop minor leaks. If problems persist, refer to trouble shooting chart.

## Installation

### ADJUSTING LIFT ROD

Adjust lift rod function by adjusting location of thumb screw along the lift rod or by adjusting the hole in which ball rod goes through strap.

Be sure to leave enough space between lift rod knob and faucet spout when rod is down



## Parts diagram

## Trouble-Shooting

### PROBLEM

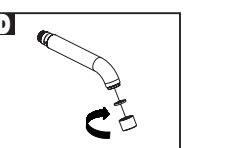
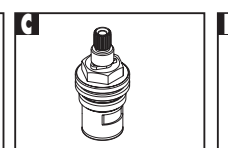
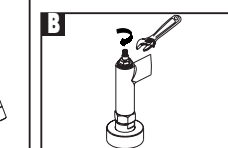
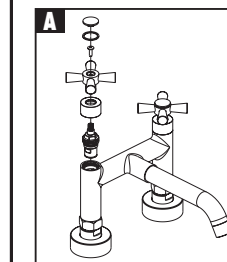
Leaks underneath handle.

### CAUSE

Retainer nut has come loose or O-ring on cartridge is dirty or twisted.

### ACTION

- Carefully remove the small cap on top of faucet handle. Remove screw and faucet handle (Diagram A).
- Tighten the retainer nut by turning it clockwise (Diagram B). Move the handle the "ON" position to check for leaks.
- If the leak does not stop, shut off the water supply. Remove the retainer nut by turning it counter-clockwise. Lift out the cartridge valve (Diagram C). Inspect the larger O-ring on the cartridge bonnet and the smaller O-ring on the cartridge stem. Remove any debris from the O-ring. If either O-ring is twisted, straighten it out. If either O-ring is damaged, replace it.
- Re-assemble the handle.



### Warning:

This product might require to be installed with an automatic temperature compensating device to reduce the risk of scalding and thermal shock. Check with the local plumbing code requirement before installation. The product should be installed by the local licensed plumber.

### PROBLEM

Aerator leaks or has an inconsistent water flow pattern

### CAUSE

Aerator is dirty or misfit.

### ACTION

- Unscrew the aerator by turning it clockwise (Diagram D). Inspect the black rubber packing and small parts. Clear away any debris. Re-assemble the aerator as shown.
- Replace the aerator.