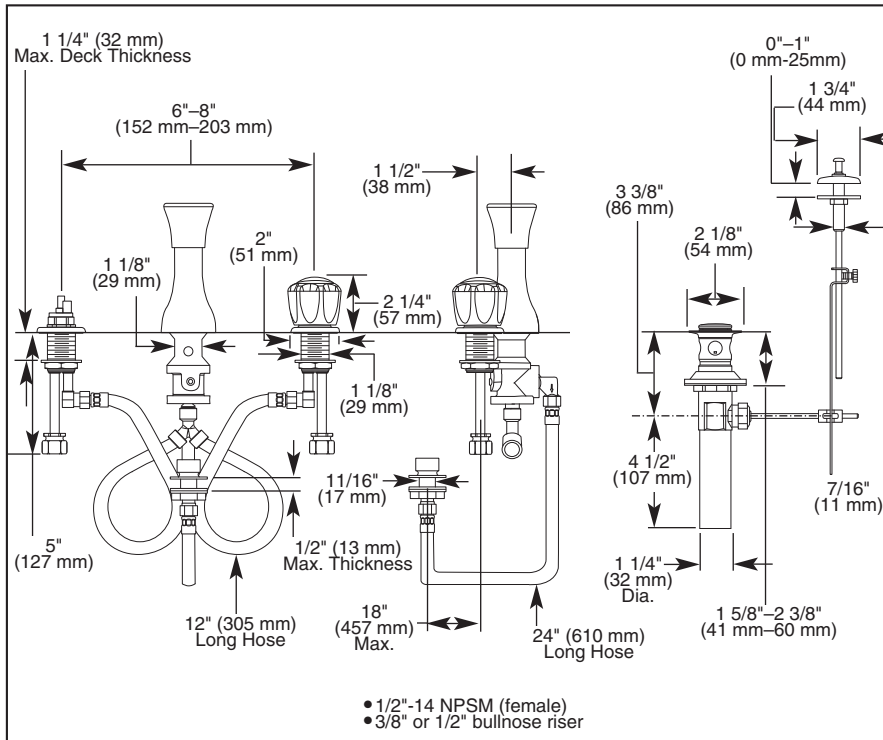


DELTA SPECIALTY FAUCETS

- Three Handle Bidet Valve
- Four Hole Installation

Submitted Model No.: _____

Specific Features: _____



Available LHP Handle Options

▲ Designate proper finish suffix

H11/H21▲ 1 1/8" (29 mm)	H17/H27▲ 1 1/4" (32 mm)	H24▲ 3 1/4" (83 mm)	A24 	H25▲ 2 1/2" (64 mm)	H26/H36▲ 1 1/4" (32 mm)
H31/H41▲ 1 3/8" (35 mm)	H212▲ 3" (76 mm)	H215▲ 2 5/16" (59 mm)	H216▲ 3" (76 mm)		
H240▲ 2 1/2" (64 mm)	H253▲ 3" (76 mm)	H269▲ 2 1/2" (64 mm)	H277▲ 2 1/2" (64 mm)	H278▲ 2 1/2" (64 mm)	

Delta reserves the right (1) to make changes in specifications and materials, and (2) to change or discontinue models, both without notice or obligation. Dimensions are for reference only. See current full-line price book or www.specselect.com for finish options and product availability.

DSP-S-44 Rev. C

STANDARD SPECIFICATIONS:

- Solid fabricated brass end valves.
- Widespread flexible mounting installation.
- Clear knob handles with red/blue indicators or LHP-Less Handle Program. See handle options below.
- Directional handle for rim flush or rosette spray.
- Control mechanism is a rotating cylinder type with stainless steel plate and 180° rotation, with replaceable non-metallic seats operating in stainless steel lined sockets.
- Hot and cold stems are interchangeable.
- Temperature and volume controlled with handles.
- All operating parts shall be replaceable from the top.
- 3/8" O.D. copper tube inlets with 1/2"-14 NPSM adapters.
- Metal pop-up drain assembly.
- Model 44 series has vacuum breaker.
- 2" (51 mm) diameter handle bases.
- For handle H253 you must also order RP62961, which contains 62480 base and 1713 bonnet.

WARRANTY

- Lifetime Faucet and Finish Limited Warranty to the original consumer purchaser to be free from defects in material and workmanship.
- 5 Year Limited Warranty for usage in all industrial, commercial and business applications.



COMPLIES WITH:

- ASME A112.18.1 / CSA B125.1
- ♿ Indicates compliance to ICC/ANSI A117.1

Available LHP Handle Accent Options with Matching Lift Knobs



55 E. 111th Street, Indianapolis, Indiana 46280
395 Matheson Blvd. E., Mississauga, ON L4Z 2H2
© 2010 Masco Corporation of Indiana