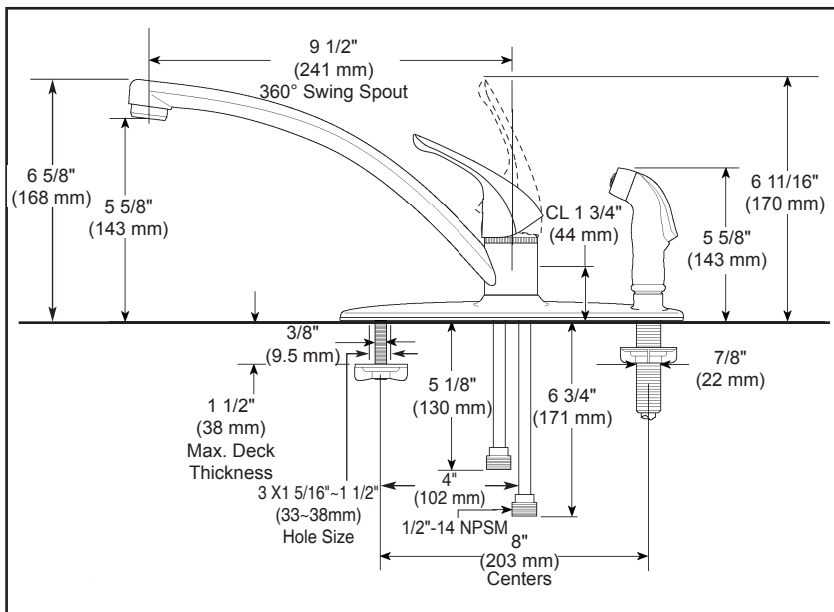


Submitted Model No.: _____
 Specific Features: _____



▲ Designate proper finish suffix



KITCHEN FAUCET

- Single Handle, Deck Mount
- 3 Hole Sink Applications

STANDARD SPECIFICATIONS

- Solid brass fabricated body.
- 8" (203 mm) centers.
- 9 1/2" (241 mm) long, 6 5/8" (168 mm) high spout swings 360°.
- Lever handle.
- Replaceable rotating ball valve with replaceable non-metallic seats.
- 1/2" -14 NPSM threaded male inlet adapters.
- Model with spray attachment has antisiphon device as integral part of valve body.
- Min. 2 1/2" (64 mm) clearance to back splash recommended

WARRANTY

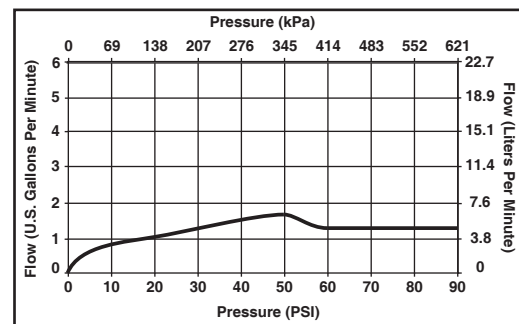
- Lifetime Faucet and Finish Limited Warranty to the Original consumer purchaser to be free from defects in material and workmanship.
- 5 Year Limited Warranty for usage in all Industrial, Commercial and Business applications.



COMPLIES WITH

- ASME A112.18.1 / CSA B125.1
- Indicates compliance to
 ICC / ANSI A117.1
- CSA Certified

Verified compliant with 0.25% weighted average Pb content regulations.



55 E. 111th Street, Indianapolis, Indiana 46280
 350 South Edgeware Road, St. Thomas, ON N5P 4L1
 © 2011 Masco Corporation of Indiana

Delta reserves the right (1) to make changes in specifications and materials, and (2) to change or discontinue models, both without notice or obligation. Dimensions are for reference only. See full-line price book or www.specselect.com for finish options and product availability.