



## Electronic Flush Valves & Retrofit Kits

Rough-in for 1601T6302TR Battery operated concealed flush valve-for Freestanding or Wallhung Water Closet with 1.50" Top Inlet spud and 14" x 20" front access cover

### Model No: 1601T6302RI-48

#### COMPLIES WITH:

- CSA certified.
- Complies to ASSE 1037
- ADA compliant and meets Handicapped Accessibility Standard ASME 117.1 of less than 5 lbs operating force
- (Contact Delta Representative for State and/or Local Approvals)



#### SPECIFICATION:

- Roughin Only (Trim must be purchased separately)
- Electronic solenoid activated Teck® concealed diaphragm flush valve
- Adjustable 110mm (4.31") to 132mm (5.19") inlet/valve outlet centers
- Vacuum breaker
- Renewable seat
- Chloramine resistant diaphragm attached to guide with forged metal retainer
- Pressure loss check angle stop with wheel handle
- BATTERY operated
- For WC WITH 1 1/2" TOP INLET
- With metal mounting frame for 14" x 20" Front Access Wallplate
- 4.8L (1.27 US Gal.) Factory Set Flush at 60 psi - Not Field Adjustable

#### OPERATION:

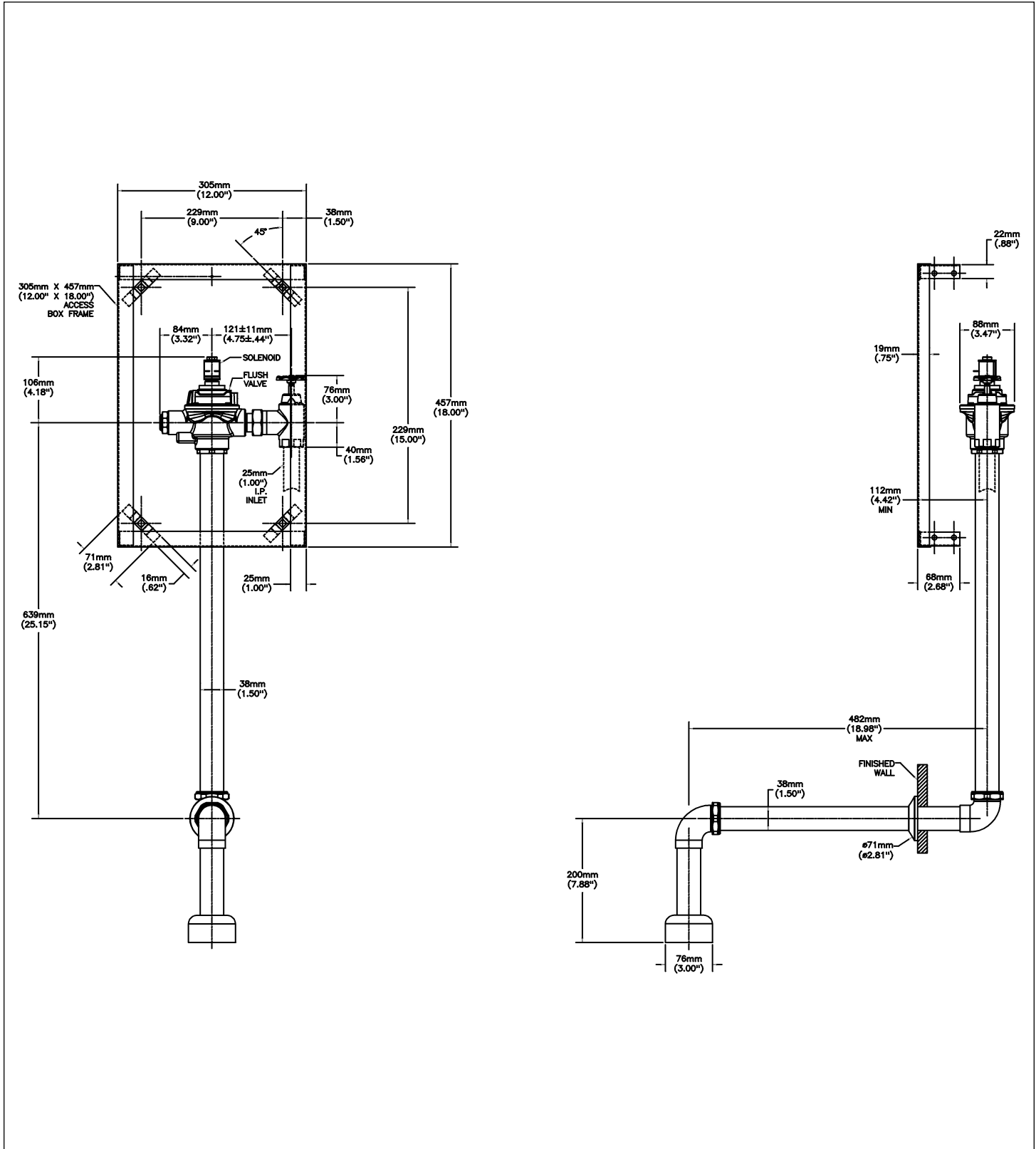
- 8 second blocking time
- 4 second activation delay
- Selectable sensing distance: 24" to 56" in 8" increments. Factory set to 40"
- 24 hour courtesy flush factory set to off

***(Dimensional drawing on following page)***

Delta reserves the right (1) to make changes to specifications and materials, and (2) to change or discontinue models, both without notice or obligation. Dimensions are for reference. Measurement may vary plus or minus 6mm(0.25"). Mounting locations are suggested only. Check with local codes for requirements in your area. This spec was produced March 05, 2012.

Delta Faucet Company - 55 East 111th St. - Indianapolis, Indiana, USA 46280 - (317) 848-1812  
Delta Faucet Canada - 395 Matheson Blvd E - Mississauga, Ontario, Canada L4Z 2H2 - (905) 712-3030

Model No: 1601T6302RI-48



Delta reserves the right (1) to make changes to specifications and materials, and (2) to change or discontinue models, both without notice or obligation. Dimensions are for reference. Measurement may vary plus or minus 6mm(0.25"). Mounting locations are suggested only. Check with local codes for requirements in your area. This spec was produced March 05, 2012.

Delta Faucet Company - 55 East 111th St. - Indianapolis, Indiana, USA 46280 - (317) 848-1812  
 Delta Faucet Canada - 395 Matheson Blvd E - Mississauga, Ontario, Canada L4Z 2H2 - (905) 712-3030