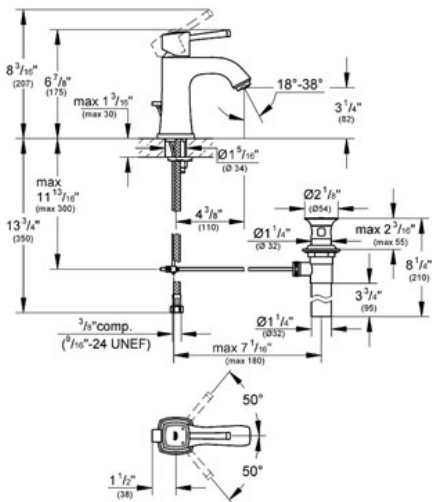


GRANDERA Lavatory Centerset M-Size

MODEL # 23311

GROHE America, Inc | 200 North Gary Avenue, Suite G, Roselle, IL 60172
Phone: +1 (800) 444-7643 | Fax: +1 (800) 225-2778 | us-customerservice@grohe.com

Pure Freude an Wasser



Product Description: Lavatory Centerset M-Size

Standard Specification:

- GROHE StarLight® finish
- GROHE SilkMove® ceramic cartridge
- GROHE EcoJoy® technology for less water and perfect flow
- GROHE AquaGuide® adjustable aerator 5.7 l/min
- GROHE QuickFix® rapid installation system
- Single hole installation
- 1 1/4" pop-up waste set
- Stainless Steel Braided Flexible Supplies
- Temperature limiter
- Max Flow Rate 1.5 gpm (5.7 L/min)

Applicable Codes & Standards:

- Energy Policy Act of 1992
- NSF 61
- ASME A112.18.1/CSA B125.1
- US Federal and State material regulations
- EPA WaterSense®
- ICC/ANSI A117.1

Color:

- 23311 000 chrome
- 23311 EN0 Brushed Nickel

