

# Duetta 6636 Salon Spa Combination



Product Codes beginning with: DUE6636CCR

Also applies to products sold under part numbers: JR50, JR55, JR60, JR65, JR70, JR75, JR80, JR85

## TECHNICAL SPECIFICATIONS

	English	Metric
Outer Dimensions	66" L x 36" W x 26" H	1676 mm L x 914 mm W x 660 mm H
Interior Dimensions (bottom of bath) L x W (Mid) x W ( End)	44" L x 21 1/2" W x 21 1/2" W	1118 mm L x 546 mm W x 546 mm W
Drain/Equipment Configuration	Center drain/Right end pump & blower	Center drain/Right end pump & blower
Bath Weight (empty)	156 lbs	70.8 kg
Total Weight/Floor Loading	1,064 lbs 64.5 lbs/ft <sup>2</sup>	483 kg 314.8 kg/m <sup>2</sup>
Operating Gallonage (min-max)	75 (min) 79 (max) U.S. Gals	283.9 (min) 299 (max) L
Electrical Specifications	<b>Each component requires a separate, dedicated GCFI protected circuit(s)</b>	
Motor/Pump & Heater	240V 20A 120HZ	
Blower	120V 15A 60HZ	

## FEATURES, UPGRADES & ACCESSORIES

**Material Type:** High-Gloss Acrylic

**Install Type:** Drop-in or Undermount

**Available Colors:** White (W), Almond (A), Oyster (Y), Black (B)

**Cut-out Template:** DA08000

**Standard (Included) Features:**

16 jets, In-line Heater, Chromatherapy lighting, 900w blower, bottom air channels

**Available Control Systems:**

J4 Luxury Control Panel (standard)

J5 Luxury LCD Control Panel

**Available Upgrades:**

Whisper Quiet Technology,

Illumatherapy Lighting

**Available Accessories:**

DA34 Rotary Drain Kit PVC (specify metal finish)

D095 TheraPro Jet Trim Kit (specify metal finish)

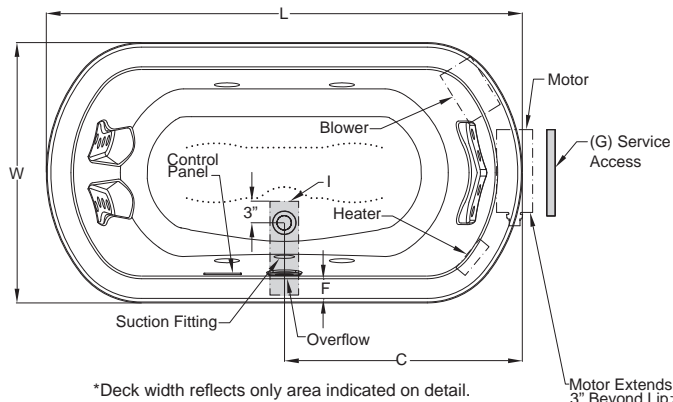
827: Chrome, 826: Brushed Nickel, 845: Oil Rubbed Bronze

\*Note: D095 (Chrome) is standard on Illumatherapy jets.

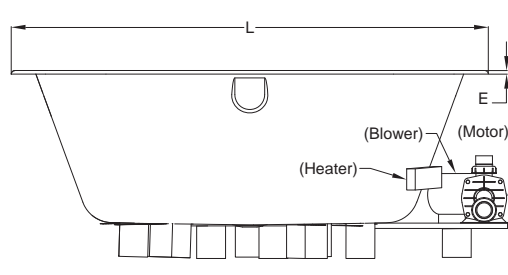
C263 Curved Pillow (specify color) 959: White, 958: Almond, 969: Oyster

GQ88 Light Chromatherapy Add-on Kit

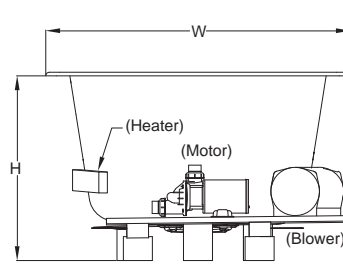
## KEY DIMENSIONS



Letter	Description	English	Metric
L	Outer Length	66"	1676 mm
W	Outer Width	36"	914 mm
H	Overall Height	26"	660 mm
A	Overflow Height	18 3/8"	467 mm
B	Long Edge to Drain Center	11"	279 mm
C	Short Edge to Drain Center	33"	838 mm
D	Drain Shoe Length	7 1/4"	183 mm
E	Deck Height	1/2"	13 mm
F	Deck Width*	3 7/8"	98 mm
G	Service Access Dimensions	12" H x 18" L	305 mm x 457 mm
I	Floor Cut-out for Drain	13" x 4"	330 mm x 102 mm

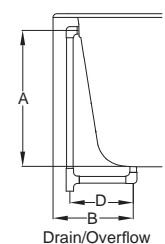


Side View



End View

Note: Drain installation is non-standard, vertical overflow connection requires offset.



Drain/Overflow

NOTE: Graphics May Not be to Scale