

Elara 6042 LH Whirlpool



Product Codes beginning with: ELA6042WLR

Also applies to products sold under part numbers: JU10, JU15, EE90, JU25, JU30, JU35, JU40, JU45

TECHNICAL SPECIFICATIONS

	English	Metric
Outer Dimensions	60" L x 42" W x 26" H	1524 mm L x 1067 mm W x 660 mm H
Interior Dimensions (bottom of bath) L x W (Mid) x W (End)	36 1/2" L x 26 1/2" W x 26 1/2" W	927 mm L x 673 mm W x 673 mm W
Drain/Pump Configuration	Left hand drain/Right end pump	Left hand drain/Right end pump
Bath Weight (empty)	135 lbs	61 kg
Total Weight/Floor Loading	1,168 lbs 66.7 lbs/ft ²	531 kg 325 kg/m ²
Operating Gallonage (min-max)	83 (min) 94 (max) U.S. Gals	314.2 (min) 356 (max) L
Electrical Specifications	Each component requires a separate, dedicated GCFI protected circuit	
Motor/Pump	120V 20A 60HZ	
Heater	120V 15A 60HZ	

FEATURES, UPGRADES & ACCESSORIES

Material Type: High-Gloss Acrylic

Install Type: Drop-in or Undermount

Available Colors: White (W), Almond (A), Oyster (Y), Black (B)

Cut-out: 58" x 40" or Undermount Template DQ50000

Standard (Included) Features:

16 jets, In-line Heater,
Chromatherapy lighting

Available Control Systems:

J4 Luxury Control Panel (standard)

J5 Luxury LCD Control Panel

Available Upgrades:

Whisper Quiet Technology,
Illumatherapy Lighting

Available Accessories:

DA34 Rotary Drain Kit PVC (specify metal finish)

HP55 Rotary Drain Kit (specify metal finish)

D095 TheraPro Jet Trim Kit (specify metal finish)

G864 Hand Rails (specify metal finish)

827: Chrome, 826: Brushed Nickel, 845: Oil Rubbed Bronze

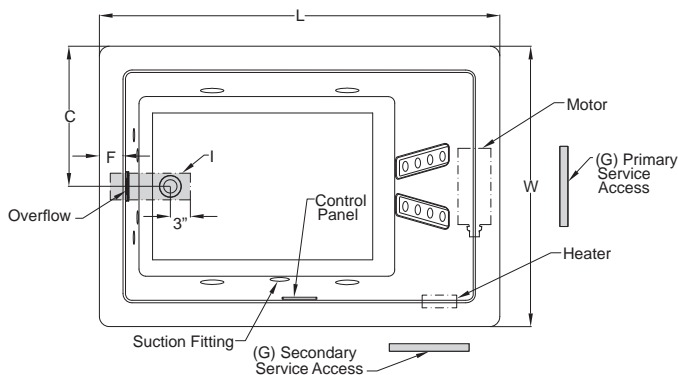
*Note: D095 (Chrome) is standard on Illumatherapy jets.

EK91 21" Straight Pillow (specify color) 959: White, 958: Almond,

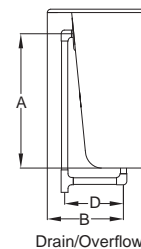
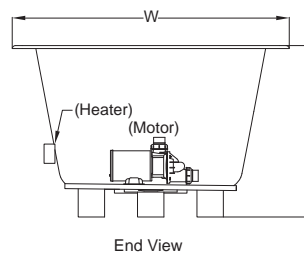
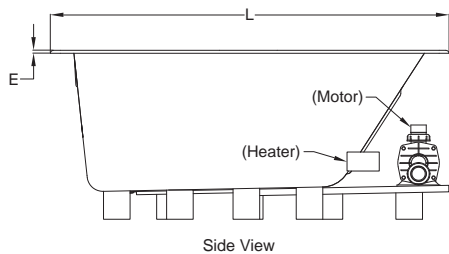
969: Oyster

GQ88 Light Chromatherapy Add-on Kit

KEY DIMENSIONS



Letter	Description	English	Metric
L	Outer Length	60"	1524 mm
W	Outer Width	42"	1067 mm
H	Overall Height	26"	660 mm
A	Overflow Height	18 1/2"	470 mm
B	Long Edge to Drain Center	10 5/8"	269 mm
C	Short Edge to Drain Center	21"	533 mm
D	Drain Shoe Length	6"	152 mm
E	Deck Height	1/2"	13 mm
F	Deck Width*	4 1/4"	107 mm
G	Service Access Dimensions	12" H x 18" L	305 mm x 457 mm
I	Floor Cut-out for Drain	12" x 4"	305 mm x 102 mm



NOTE: Graphics May Not be to Scale

© 2010 Jacuzzi Luxury Bath • For additional information call Customer Service 800-288-4002 • www.jacuzzi.com/technicalspecs

Refer to installation instructions included with fixture before beginning installation. Please confirm product availability and specifications before commencing with any installation work.

PRODUCT SPECIFICATIONS AND AVAILABILITY ARE SUBJECT TO CHANGE WITHOUT NOTICE.

HC98000 REL 03/10