

Elara 6636 LH Pure Air Bath



Product Codes beginning with: ELA6636ALR

Also applies to products sold under part numbers: LP10, LP30

TECHNICAL SPECIFICATIONS

| | English | Metric |
|---|--|----------------------------------|
| Outer Dimensions | 66" L x 36" W x 26" H | 1676 mm L x 914 mm W x 660 mm H |
| Interior Dimensions (bottom of bath) L x W (Mid) x W (End) | 43 1/2" L x 19 1/2" W x 19 1/2" W | 1105 mm L x 495 mm W x 495 mm W |
| Drain/Blower Configuration | Left hand drain/Right end blower | Left hand drain/Right end blower |
| Bath Weight (empty) | 130 lbs | 59 kg |
| Total Weight/Floor Loading | 1,121 lbs 68 lbs/ft ² | 509 kg 331.8 kg/m ² |
| Operating Gallonage (min-max) | 59 (min) 89 (max) U.S. Gals | 233 (min) 337 (max) L |
| Electrical Specifications | Each component requires a separate, dedicated GCFI protected circuit(s) | |
| Blower | | 120V 15A 60HZ |
| Chromatherapy (if selected) | | 120V 15A 60HZ |

FEATURES, UPGRADES & ACCESSORIES

Material Type: High-Gloss Acrylic

Install Type: Drop-in or Undermount

Available Colors: White (W), Almond (A), Oyster (Y), Black (B)

Cut-out: 64" x 34" or Undermount Cutout DQ51000

Standard (Included) Features:

Chromatherapy lighting, 800w blower, bottom and side air channels

Available Control Systems:

J4 Luxury Control Panel (standard)

J5 Luxury LCD Control Panel

Available Upgrades:

900w blower (with J5 LCD Control Panel)

Available Accessories:

DA34 Rotary Drain Kit PVC (specify metal finish)

HP55 Rotary Drain Kit (specify metal finish)

G864 Hand Rails (specify metal finish)

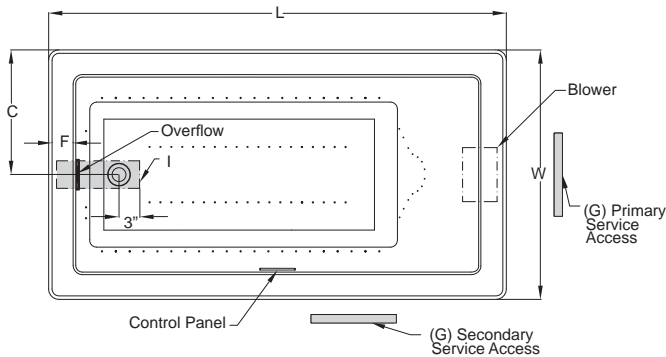
827: Chrome, 826: Brushed Nickel, 845: Oil Rubbed Bronze

EK91 21" Straight Pillow (specify color) 959: White, 958: Almond,

969: Oyster

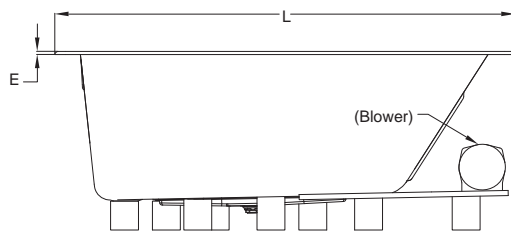
GQ88 Light Chromatherapy Add-on Kit

KEY DIMENSIONS

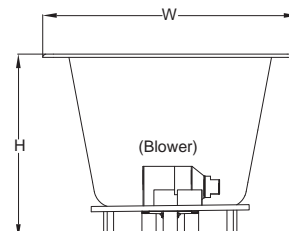


*Deck width reflects only area indicated on detail.

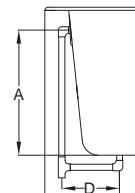
| Letter | Description | English | Metric |
|--------|----------------------------|---------------|-----------------|
| L | Outer Length | 66" | 1676 mm |
| W | Outer Width | 36" | 914 mm |
| H | Overall Height | 26" | 660 mm |
| A | Overflow Height | 18 1/2" | 470 mm |
| B | Long Edge to Drain Center | 10 5/8" | 269 mm |
| C | Short Edge to Drain Center | 18" | 457 mm |
| D | Drain Shoe Length | 6" | 152 mm |
| E | Deck Height | 1/2" | 13 mm |
| F | Deck Width* | 4 1/4" | 107 mm |
| G | Service Access Dimensions | 12" H x 18" L | 305 mm x 457 mm |
| I | Floor Cut-out for Drain | 12" x 4" | 305 mm x 102 mm |



Side View



End View



Drain/Overflow

NOTE: Graphics May Not be to Scale

© 2010 Jacuzzi Luxury Bath • For additional information call Customer Service 800-288-4002 • www.jacuzzi.com/technicalspecs

Refer to installation instructions included with fixture before beginning installation. Please confirm product availability and specifications before commencing with any installation work.

PRODUCT SPECIFICATIONS AND AVAILABILITY ARE SUBJECT TO CHANGE WITHOUT NOTICE.

HD04000 REL 03/10