

KWIKSET SIGNATURE SERIES HANDLESETS

Door Prep	Deadbolt: Cross Bore 2-1/8" or 1-1/2". Edge Bore 1", Latch Face 1" x 2-1/4". Handle: Cross Bore 2-1/8". Edge Bore 1", Latch Face 1" x 2-1/4".
Backset	Deadbolt: Adjustable to 2-3/8" or 2-3/4". Handle: Adjustable to 2-3/8" or 2-3/4".
Door	1-3/4" doors standard. 2-1/4" doors optional.
Thickness	Not designed for use on 1-3/8" doors.
Cylinder	SmartKey or Pin & Tumbler
Faceplate	1" x 2-1/4". Specify round corner, square corner or drive-in.
Strikes	Deadbolt: 1-1/4" x 3-5/8". Specify round corner or square corner. Handle: 2-1/4" full lip. Specify round corner or square corner. Other options available.
Bolt	Deadbolt: 1" steel. Handle: 1/2" throw. Nickel plated.
Door Handing	Reversible for right or left-hand doors.
ANSI/BHMA	A156.5 Grade 1 (for deadbolt).
ADA	N/A
UL	N/A

KWIKSET SIGNATURE SERIES LEVERS

Door Prep	Cross Bore 2-1/8" Edge Bore 1" Latch Face 1" x 2-1/4"
Backset	Adjustable to 2-3/8" or 2-3/4".
Door	1-3/8" – 1-3/4" doors standard.
Thickness	2-1/4" doors optional on 720 and 740 models.
Cylinder	SmartKey or Pin & Tumbler.
Faceplate	1" x 2-1/4". Specify round corner, square corner or drive-in.
Strikes	2-1/4" full lip. Specify round corner or square corner. Other options available.
Bolt	1/2" throw nickel plated.
Door Handing	Specify handing only with inactive levers
ANSI/BHMA	A156.2 Grade 2.
ADA	Functions 720, 788 satisfy section 4.13.9. ADA requirement.
UL	Meets 3 hour fire rating for all UL functions.

KWIKSET SIGNATURE SERIES 780-785 DEADBOLTS

Door Prep	780, 785: Crossbore 2-1/8" or 1-1/2". Edge Bore 1", Latch Face 1" x 2-1/4" 782, 784: Crossbore 2-1/8". Edge Bore 1", Latch Face 1" x 2-1/4"
Backset	Adjustable to 2-3/8" or 2-3/4" standard.
Door	
Thickness	1-3/8" – 1-3/4" standard. 1-7/8" – 2-1/4" optional.
Cylinder	6-pin removable core or SmartKey.
Faceplate	1" x 2-1/4". Specify round corner, square corner, or drive-in.
Strikes	1-1/4" x 3-5/8". Specify round corner or square corner. Other options available.
Bolt	1" throw. Steel.
Door Handing	Reversible for right or left-hand doors.
ANSI/BHMA	A156.5 Grade 2.
ADA	Interior turn piece meets 4.13.9 ADA requirements.
UL	Meets 3 hour fire rating for all UL functions.

KWIKSET SIGNATURE SERIES KNOBS

Door Prep	Cross Bore: 2-1/8" Edge Bore: 1" Latch Face: 1"x 2-1/4".
Backset	Adjustable to 2-3/8" or 2-3/4". UL 2-3/4" standard 2-3/8" optional.
Door	1-3/4" doors standard. 2-1/4" doors optional.
Thickness	2-1/4" doors optional on 720 and 740 models only. 1-5/8" to 1-7/8" optional, 701 models.
Cylinder	SmartKey or Pin & Tumbler.
Faceplate	1" x 2-1/4". Specify round corner, square corner or drive-in.
Strikes	2-1/4" full lip. Specify round corner or square corner. Other options available.
Bolt	1/2" throw nickel plated
Door Handing	Reversible for right- or left-hand doors.
ANSI/BHMA	A156.2 Grade 2.
ADA	N/A
UL	Meets 3 hour fire rating for all UL knob functions.

KWIKSET SIGNATURE SERIES 980/985 DEADBOLTS

Door Prep	980S, 985S: Crossbore 2-1/8" or 1-1/2". Edge Bore 1", Latch Face 1" x 2-1/4". 982S, 984S: Crossbore 2-1/8". Edge Bore 1", Latch Face 1" x 2-1/4".
Backset	Adjustable to 2-3/8" or 2-3/4". UL 2-3/4" standard 2-3/8" optional.
Door Thickness	SMT 1-3/8" - 1-3/4" P&T 1-3/4".
Cylinder	SmartKey or Pin & Tumbler.
Faceplate	1" x 2-1/4". Specify round corner, square corner or drive-in.
Strikes	Standard: Grade 2, 1-1/4" x 3-5/8" Specify round corner or square corner. For Grade 1 order 5278 Strike option and Ultra Strike Door Jamb Brace. Other options available.
Bolt	1" throw Steel.
Door Handing	Reversible for right or left-hand doors.
ANSI/BHMA	A156.5 Grade 1.
ADA	Interior turn piece meets 4.13.9 ADA requirements.
UL	Meets 3 hour fire rating for all UL functions.

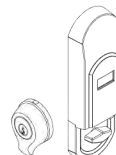
KWIKSET SIGNATURE SERIES 907/909 DEADBOLTS

SmartCode™ Deadbolt operated by key outside or electronic keypad and thumb turn inside.

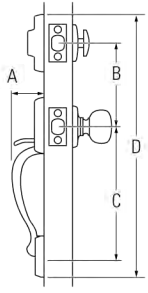


KWIKSET SIGNATURE SERIES 908 DEADBOLTS

SmartScan™ Deadbolt operated by key outside or biometric fingerprint reader and thumb turn inside

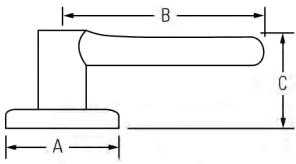


KWIKSET SIGNATURE SERIES HANDLESET



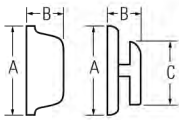
Design	A	B	C	D
Amherst®	3"	5-1/2"	8-13/32"	18-23/32"
Arlington®	2-17/32"	5-1/2"	11"	19-1/16"
Ashfield™	2-21/32"	5-1/2"	8-13/32"	17-3/4"
Avalon™	2-21/32"	5-1/2"	8-13/32"	18-5/32"
Chelsea®	2-5/32"	5-1/2"	9-11/16"	18-1/2"
Gibson®	2-7/16"	5-1/2"	9-11/16"	17-3/4"
Hawthorne™	2-7/8"	5-1/2"	8-13/32"	17-9/16"
Shelburne™	2-7/8"	5-1/2"	8-13/32"	18-1/4"
Sheridan®	2-3/4"	5-1/2"	11"	18-9/16"
Sonoma®	2-9/32"	5-1/2"	9-11/16"	17-1/8"
Wellington®	2-7/8"	5-1/2"	8-13/32"	18-15/16"

KWIKSET SIGNATURE SERIES LEVER



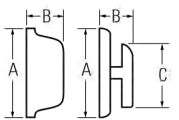
Design	A	B	C	C (Keyed)
Ashfield™	2-5/8"	4-3/16"	2-9/16"	2-7/8"
Avalon™	2-5/8"	4-1/4"	2-1/2"	2-7/8"
Brooklane®	2-5/8"	4-3/16"	2-3/16"	2-7/8"
Commonwealth®	2-5/8"	3-5/8"	1-15/16"	2-11/16"
Lido®	2-5/8"	3-3/4"	1-15/16"	2-5/8"
Pembroke™	2-5/8"	4-7/32"	2-7/16"	2-7/8"
Tustin®	2-5/8"	3-3/4"	1-15/16"	2-5/8"

KWIKSET SIGNATURE SERIES 980/985 DEADBOLT



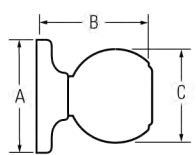
Design	A	B	C
980 Interior	2-9/16"	1-5/32"	1-13/16"
980 Exterior	2-5/8"	1-1/16"	
985 Interior	2-5/8"	1-1/16"	
985 Exterior	2-5/8"	1-1/16"	

KWIKSET SIGNATURE SERIES 780/785 DEADBOLT



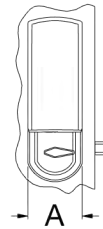
Design	A	B	C
780, 782 Interior	2-5/8"	1-1/16"	1-15/16"
780, 782 Exterior	2-5/8"	1-5/32"	
784, 785 Interior	2-5/8"	1-5/32"	
784, 785 Exterior	2-5/8"	1-5/32"	

KWIKSET SIGNATURE SERIES KNOB

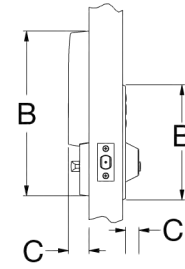


Design	A	B	C
Abbey®	2-5/8"	2-3/4"	2-1/32"
Cameron™	2-5/8"	3"	2-1/8"
Circa™	2-5/8"	2-3/4"	2-1/8"
Copa™	2-5/8"	2-3/8"	2-1/8"
Hancock™	2-5/8"	2-3/4"	2-3/8"
Laurel™	2-5/8"	2-5/8"	2-7/16"

SMARTCODE™



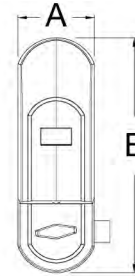
Inner Trim



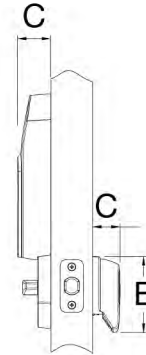
Outer Trim

Design	A	B	C
Outer Trim		6-7/8"	1-5/32"
Inner Trim	3-1/4"	9-13/16"	1-3/16"

SMARTSCAN™



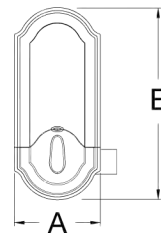
Inner Trim



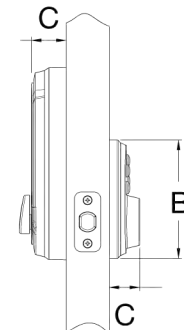
Outer Trim

Design	A	B	C
Outer Trim		3-1/4"	1-3/16"
Inner Trim	3-1/4"	10"	1-7/16"

SMARTCODE SIGNATURE SERIES™



Inner Trim



Outer Trim

Design	A	B	C
Outer Trim		4-7/16"	1-5/32"
Inner Trim	3-1/4"	7-3/16"	1-5/16"