



### Model 120055

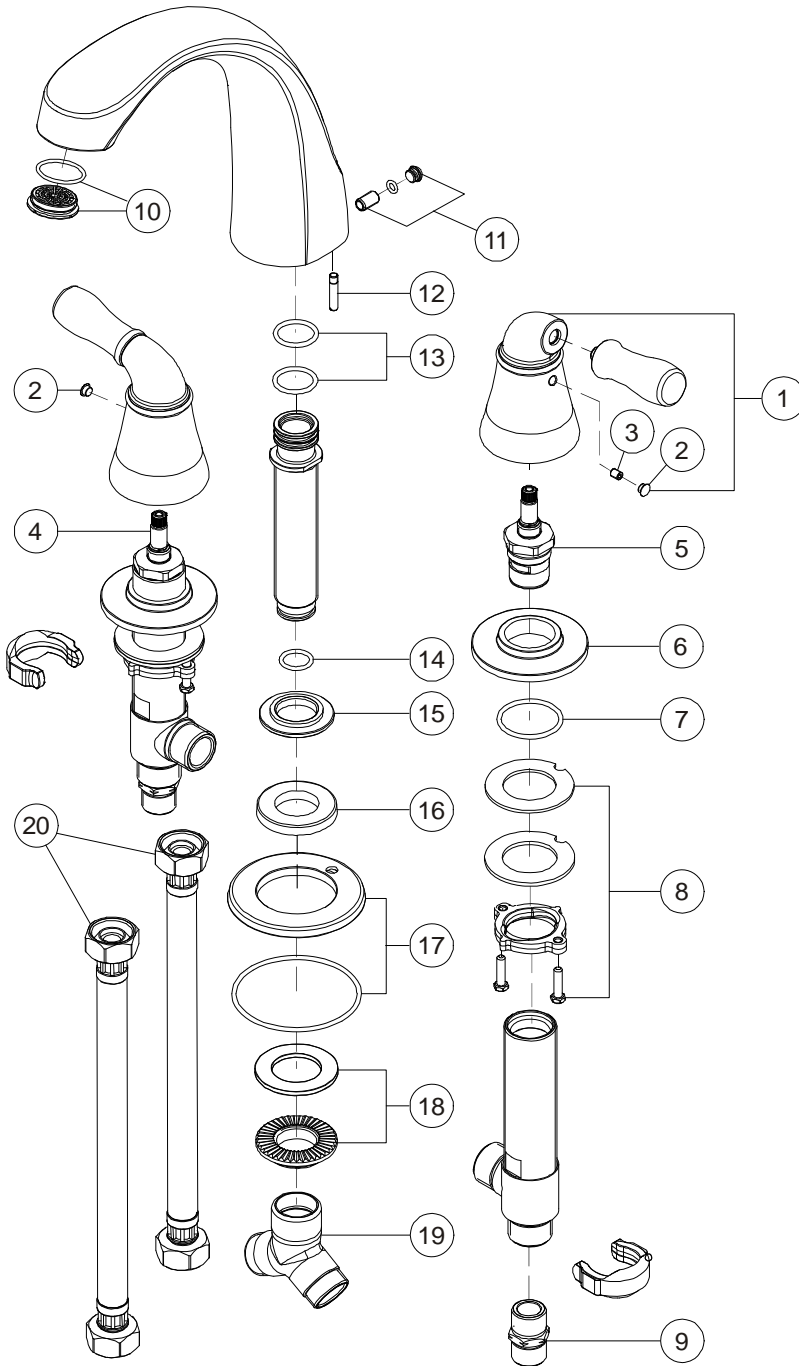
Twin Lever Handle Widespread Roman Tub Faucet  
Brushed Nickel Finish  
1/2" IPS Connection

# Sanibel™



Model 120055

Refer to Premier Faucet Parts List Sheet for part numbers and ordering information.



For additional information contact Premier Faucet at 866-745-4010 or visit our website at [www.premierfaucet.com](http://www.premierfaucet.com)





### Model 120055

Twin Lever Handle Widespread Roman Tub Faucet  
Brushed Nickel Finish  
1/2" IPS Connection

# Sanibel™



Model 120055

*Refer to Premier Faucet Parts Schematic Sheet for parts diagram.*

INDEX	DESCRIPTION	MATERIAL	QTY	PART NO
1	HANDLE ASSEMBLY	BRASS	2	994149
2	INDEX PLUG	PLASTIC	2	994203
3	HANDLE SCREW	STEEL	2	994196
4	CARTRIDGE - HOT	CERAMIC	1	994109
5	CARTRIDGE - COLD	CERAMIC	1	994108
6	DECK ESCUTCHEON	BRASS	2	994391
7	O-RING	RUBBER	2	994539
8	INSTALLATION KIT	BRASS	2	994263
9	IPS ADAPTER	BRASS	2	994575
10	FLOW CONDITIONER	PLASTIC	1	994514
11	SPOUT SCREW ASSEMBLY	STEEL	1	994511
12	INDEXING PIN	STEEL	1	994574
13	O-RING	RUBBER	2	994538
14	GASKET	RUBBER	1	994524
15	KEEPER	STEEL	1	994576
16	COLLAR	BRASS	1	994568
17	SPOUT ESCUTCHEON ASSY	BRASS	1	994454
18	INSTALLATION KIT	BRASS	1	994264
19	Y CONNECTOR	BRASS	1	994597
20	HOSE	PLASTIC	2	994559

